

# Communication of Engagement Submitted May 2023

For the period: May 2021, to May 2023

# Contents

<b>Statement of Continued Support by the Chief Executive .....</b>	<b>1</b>
<b>Description of Actions.....</b>	<b>2</b>
<b>Measurement of Outcomes .....</b>	<b>2</b>
<b>Pact’s Commitment to the Sustainable Development Goals .....</b>	<b>3</b>
Global Health .....	3
Energy & Environment, Artisanal and Small-Scale Mining.....	4
Livelihoods .....	5
Women's Empowerment.....	6
Governance.....	7
Capacity Development .....	8

# Statement of Continued Support by the Chief Executive

May 2023

To our stakeholders:

I am pleased to confirm that Pact reaffirms its support to the United Nations Global Compact and its Ten Principles in the areas of Human Rights, Labour, Environment and Anti-Corruption. This is our Communication on Engagement with the United Nations Global Compact. We welcome feedback on its contents.

In this Communication of Engagement, we describe the actions that our organization has taken to support the UN Global Compact and its Principles as suggested for an organization like ours. We also commit to sharing this information with our stakeholders using our primary channels of communication.

Sincerely yours,

Caroline Anstey  
President & CEO  
Pact

## Description of Actions

Pact has committed to the following actions in support of the Global Compact:

- Propose and implement partnerships on corporate sustainability and engage with other stakeholders.
- Support UN Global Compact business participants as they implement and report on their sustainability efforts.
- Provide commentary to companies on Global Compact community of practice.
- Engage with Global Compact Local Networks.
- Join and/or support issue platforms and workstreams.

## Measurement of Outcomes

Pact uses the following qualitative and quantitative indicators to measure the outcomes of the activities described above:

- We have formed at least 12 new partnerships with UN Global Compact member-businesses via our Private Sector Engagement and International Communications activities that will advance the UN Global Compact principles, particularly UN Global Compact principles 1, 2, 4, 5, 7, 8, and 9, as well as working toward the achievement of the Sustainable Development Goals (see pages 3-8).
- We have attended several UN Global Compact events and webinars, including the UN Private Sector Forum, and plan to continue attending as many events and webinars to ensure continuous knowledge exchange and learning.

# Pact's Commitment to the Sustainable Development Goals

## Global Health



Good health is the bedrock of community development. We at Pact believe that achieving good health and wellbeing requires working toward healthy lives for all ages around the world. We work at national and sub-national levels to improve inclusive and equitable access to health and social services, enabling stakeholders to develop local solutions. We achieve this through collaboration with civil society organizations, government agencies, community groups, and private and faith-based service providers. Pact pioneers sustainable community-led HIV/AIDS and health programming that highlights and meets the needs of vulnerable children, adolescents, pregnant and breastfeeding women, caregivers and families, and key populations.

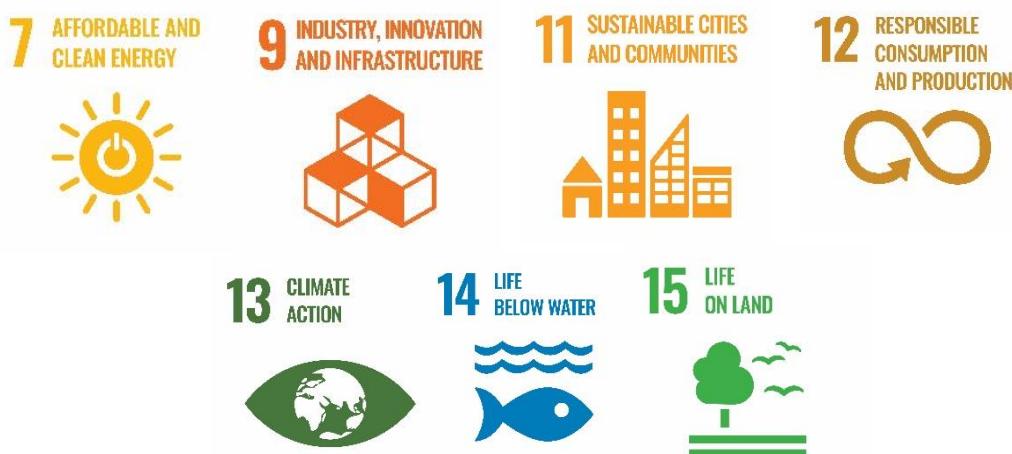
Our community-based solutions have also been instrumental in facilitating community response and resilience to public health shocks and stresses such as the Covid-19 pandemic.

Together with our partners, we improve health and social systems around the world, especially those that serve people who are challenged by poverty and marginalization.

Our health work has three main focuses:

- Disease prevention, care and treatment
- Health and social welfare systems strengthening
- Global health security

## Energy, Environment, and Artisanal and Small-Scale Mining



Pact engages communities to incentivize sustainable natural resource management and livelihoods that in turn positively impacts conservation and ecosystem restoration. We empower communities to make their own resource management decisions, working within the realities of population pressure, poverty, an increasing demand for energy and natural resources, and the impacts of climate change. We work with local communities, local governments, and civil society so they can develop the necessary skills to manage and responsibly benefit from the natural resources around them, from fish to forests to mineral deposits.

The challenges wrought by climate change also require collective action. Pact works with businesses and financial institutions to mobilize private sector finance to drive more sustainable low-emission agriculture, forestry and land use management. We work with governments and local communities to facilitate the adoption of more climate-resilient rural livelihoods and help community members move along the development pathway by developing nature-based enterprises that will generate sustained revenue without adversely impacting the environment.

Through our work, we strengthen biodiversity conservation, build climate resilience and foster more diversified, sustainable and profitable livelihoods so that those who are challenged by poverty and marginalization can thrive.

Artisanal and small-scale mining is a largely informal sector that includes workers around the world who use basic tools to extract from the earth everything from gold and gemstones to vital metals. Currently operating in Africa, Asia, and South America, Pact works in partnership with governments, industry, and artisanal miners themselves to make ASM formal, safer, more productive, and equitable.

## Livelihoods



Pact's livelihoods work helps more than a million people each year to increase their income, giving them the skills, knowledge, and resources, they need to overcome poverty and marginalization.

Economic, environmental, and social resilience and empowerment are at the core of people's ability to own their future, especially for women, youth, and disadvantaged groups.

Pact works hand in hand with the communities we serve, co-creating sustainable responses to improve their livelihood opportunities, resilience, human capital development and access to finance and markets. Our WORTH program, which brings rural women together in small groups to save money, access credit, and start small businesses, has reached more than 1 million people in 16 countries.

We use an integrated approach to holistically prepare families to be resilient to unforeseen shocks. We meet those challenged by poverty where they are and deliver the tools they need to address root causes, adjust to the often-shifting social and economic landscape around them, and become income-secure.

Our work focuses on three main areas:

1. Access to finance – We facilitate and improve equitable access to capital and financial services and products.
2. Micro and small enterprise development – We create employment and increase incomes with market-driven vocational training and skills training, with a focus on women, youth, self-sufficiency, and lasting impact.
3. Labor rights – We reduce child labor, forced labor and labor rights violations among vulnerable populations, improving their economic participation in quality jobs.

## Women's Empowerment



For decades, Pact has worked hand in hand with communities around the world to empower girls and women – especially rural women. We focus on root causes of disparities that negatively affect women and girls.

Women make up half of the world's population, but in countless ways do not enjoy the same rights and social benefits that men do. Women are more likely to be unemployed than men and bear the brunt of unpaid care and domestic work. They are less likely to have access to education, social protection and participation in governance and community and household decision-making.

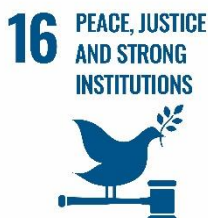
At the same time, we know that when women do better, families and entire communities do better. When women earn income of their own, for example, they are more likely than men to invest that income in their children's health, nutrition, and education, strengthening future generations.

Our health, livelihoods and governance programming all focus on gender equality and inclusion to overcome root causes of disparities that negatively affect women and girls. Pact's expertise includes women's economic empowerment, health empowerment and equality, and community solutions to gender-based violence.

Last year, Pact helped nearly 2 million people gain improved health and social services and nearly 1.4 million raise their income—the vast majority of them women.

With Pact's support, women and girls gain skills, resources, confidence, independence, and influence. We increase meaningful participation by women in family and community decision-making, local governance, and business.

## Governance



Working in more than a dozen countries across the globe, Pact's governance programming is both empowering civic change agents and strengthening public sector actors so that government institutions from the local to national level are ready to respond to citizens' needs, deliver quality services and effectively manage public resources.

Our strategies and approaches focus on the point of engagement between communities and local authorities. All our governance interventions are fundamentally aimed at connecting citizens to public decision-making processes that have a deep effect on their lives and wellbeing. To operate in challenging contexts, often marked by political closure, fragility, or conflict, we have built a toolkit for ensuring flexible, adaptive programming. Recognizing that development outcomes are circumscribed by local power dynamics and incentive structures, we mainstream approaches such as Applied Political Economy Analysis (APEA) across our programming to understand, respond to, and positively affect local systems.

Our expertise includes:

- Civil society strengthening and civic engagement, especially in closing civic spaces.
- Addressing conflict and promoting peace.
- Strengthening local governance and social accountability.
- Strengthening actors and institutions at a systems level.
- Promoting adaptive, “politically smart” programming, including through the use of APEA.

Pact's emphasis on partnership cultivates grassroots support for reform by encouraging cooperation among governments, communities, civil society, and business.

## Capacity Development and Innovation

17 PARTNERSHIPS  
FOR THE GOALS



Pact strengthens groups and communities around the world, including community-based organizations, civil society organizations, advocacy groups, and government agencies to promote innovation at every level of society. Pact views capacity development as an approach, a process, and an outcome. Innovation at Pact uses a three-pronged approach: We build enabling environments for innovation to bubble from Pact's country offices. We create external relationships with new partners to co-create new solutions. And we use empathetic, participatory techniques such as human-centered design to bring communities and end-users to co-created solutions in a transformative way.

