

COMMUNICATION ON ENGAGEMENT (COE)
KUNSILL REĠJONALI PORT – PORT REGIONAL COUNCIL

Period covered by the Communication on Engagement (COE)

From: QTR 4 2021 To: QTR 4 2022

STATEMENT OF CONTINUED SUPPORT BY THE CHIEF EXECUTIVE OR EQUIVALENT

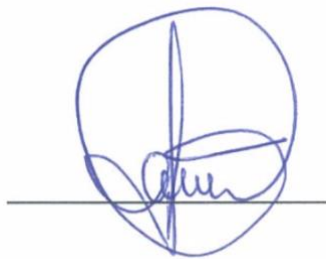
Date: 23 SEPTEMBER 2022

To our stakeholders and citizens:

I am pleased to confirm that the South East Region reaffirms its support to the United Nations Global Compact and its mission of promoting corporate sustainability in the areas of Human Rights, Labour, Environment and Anti-Corruption and support in its governance the Sustainable Development Goals.

In this Communication on Engagement, we describe our actions to continually support the Global Compact and its principles and to engage with the initiative. We also commit to sharing this information with our stakeholders using our primary channels of communication.

Sincerely yours,



President Chev. Paul Farrugia KLJ CMLJ
KUNSILL REĠJONALI PORT – PORT REGIONAL COUNCIL



KUNSILL REĠJONALI PORT - PORT REGIONAL COUNCIL

97, St. Mary's Street, Tarxien | E-Mail: regjun-port.dlg@gov.mt | Tel: 27040492

DESCRIPTION OF ACTIONS

(1) Have a dedicated sustainability plan or a holistic city/regional plan that incorporates the ecological, economic, political, and cultural dimensions of the region's sustainability;

The South East Region between 2015-2022 implemented an Action Plan for the 15 (now 14) Councils in the Region with possible cooperation with adjacent Councils. This has been developed after the Councils submitted their aspirations and priorities through a survey. The compilation included a City scan evaluation and Circle of Sustainability indicators. In its latest publication it renews its commitment and its engagement in the application of SDGs.

(2) Engage at the Innovating Level – undertaking a multi-year project to address a complex or seemingly intractable issue(s) within the city or region, which is supported by leaders across business, civil society and Government.

During the past two years the Region has been involved in developing a project platform based on research and development. The current main initiatives in which it is engaged are as follows;

- (1) Through URBACT CityMobileNet compiled a Sustainability Mobility Plan (SUMP) for the region with the aim to promote new forms of transit to curb congestion;
- (2) After signing to the League of Historic Cities to implement UNESCO principles on the historic centres and WHS and signing the Memorandum of Understanding with UNESCO WHITRAP has published its Historic Urban. Landscape Plan (HUL UNEESCO).

(3) Implement and promote the ten principles of the UN Global Compact in the management and administration of the city or region;

The projects delivered by the South East Region in the past two years which include the Sustainable Urban Mobility Plan and the rehabilitation of public spaces sought to develop further the 10 principles through; democratization in planning, transparency and new governance opportunities.

Please refer to the following documents:

- 1) Implementation highlighting South East Region mission and vision (2020) to its Councils and stakeholders;
- 2) The Regional Economic, Social and Cultural Community Plan 2016-2017; “This RESC Plan for the South East Region follows the terms of reference set in the document “Funding Initiative to Regional Committees: Regional Economic, Social and Cultural Community Plan; Guidance Notes (September 2016).” It is set over 7 chapters which cover an evaluation and analysis based on statistical data and diverse diagnostics. The plan considers at a second stage a comparative approach on a regional level and the application of indicators and establishes targets. It follows through with mechanisms of implementation and suggested financial systems. The final section proposes an implementation process based of Circles of Practice and presents a comprehensive one-page plan.”
- 3) Sustainability Urban Mobility Plan 2018-20; “The scope of this document is to develop an integrated planning document; a Sustainable Urban Mobility Plan (SUMP) which addresses

the South East Region. The SUMP is directed at resolving the congestion and traffic problem in the South East of Malta through; the application of new traffic management systems, alternative transport systems, the use of new technology to achieve a greener more efficient viable transport.

- 4) The South East Region: Core of a Nation State (2019) Gutenberg Press. <https://www.linkedin.com/pulse/book-launch-south-east-region-core-nation-state-heritage-enterprise/?trackingId=6lkzPPKkL6q1k4PtGXC02Q%3D%3D> Author: Dr Malcolm Borg & Photography: Rene Rossignaud: Presented at the: American University of Malta The book was launched with Chev. Paul Farrugia President of the South East Region; The President of the AUM Dr Lewis Walker; Hon. Silvio Parnis, Hon. Glenn Bedingfield and Ms Michelle Muscat Chairperson of Marigold Foundation Malta. The book has been produced after compiling the South East Regional Committee's (SERC) commitment and process map presented to the World Heritage Institute of Training and Research for the Asia and the Pacific Region (WHITR-AP). SERC as signatory to the UNESCO Historic Urban Landscape Recommendation is committed to understanding and promoting the region's landscape in all its aspects. The multi-layered and complex landscape of the Reġjun Xlokk is better understood through a more integrated approach and is being delivered here through the combination of aspects taken from "Character Appraisal" and "Landscape Assessment" tools. This is fully expressed in the preliminary Significance Statement for the SERC HUL presented through a 12-element framework. The book also highlights the principles of SERC and the citizens it represents. SERC became signatory to UNGCP in 2013 with a commitment to apply the 10 Principles. This study also integrates indicator-based assessments related to UNGCP that is; Circles of Sustainability implemented in 2013-14 and Scan City which is the current periodic form of monitoring which is tied to the Certificate of Engagement (COE) for UNGCP (2018). It presents the priority and flagship projects based on the SDGs. The book also delineates (through a full assessment) how the region is developing. The President Paul Farrugia presented the book to Ms Michelle Muscat Chairperson for the Marigold Foundation. He announced that all funds from the book sales will be donated to the Foundation (<http://marigold.org.mt>).
- 5) The Action Plan in the Publication abovementioned is being implemented in a post-COVID-19 scenario and within the limitations of the current global affairs.

ENCLOSURES

- (I) FORWARD THINKING
- (II) SIGNIFICANCE STATEMENT
- (III) HUL PLAN

5.10 OUR THINKING: FORWARD THINKING!

Following Our 10 Principles and the "Recommendation for the Historic Urban Landscape" (HUL), it was possible in the past 5 years to set a course and plan to deliver sustainable development goals or more appropriately sustainable conservation goals. These were vital tools to deliver a comprehensive and sustainable plan for the historical landscape and the landscape of today.

The process SERC embarked upon followed an evidence-based approach which has been presented in the first chapters of this book. It also implemented a performance-based one based directly on: the 10 Principles (2015), the City Scan monitoring (2017), Circles of Sustainability Indicators (2015-17) and Sustainable Development Goals (2018). The benchmarks are National with targets set by the Maltese Government in 2018 (Ministry of Foreign Affairs 2018) and the Malta National Reform Programme (Ministry of Finance 2018). These were integrated as part of the SERC "Regional Economic, Social and Cultural Community Plan 2017" and the "South East Regional Action Plan 2015". These documents and consultations led to the consideration of a new premise in developing the HUL Implementation Programme:

This new approach is set to test: (i) what SERC is already doing in the context of HUL and SDGs; (ii) what SERC is doing well and (iii) what the SERC can do better as the initial steps in implementing the HUL programme and related projects to reach SDGs goals. This is being developed in direct coordination with Central Government and the Department of Local Government.

The South East Region in 2018 compiled the HUL Implementation Programme Process Map proposing the coordination of a system of peer review, and an open consultation process with other Pilot Cities. This follows the recommendations set in the Meeting held on the Implementation of UNESCO Recommendation on the Historic Urban Landscape (WHITRAP Shanghai 26-28 March 2018).² Specifically Recommendation 8 of the Meeting considers:

"To promote communication and dialogue between pilot case studies: monitoring pilot studies and training"

This is no case of synchronicity; the input in the planning of such a working platform demands significant energy, research, coordination and the full support from the SERC members who have

been directly involved in knowledge-based and research pilot projects funded by the European Union.

SERC through this publication has presented how it is applying Recommendations 1, 2 and 3 on the Implementation of UNESCO Recommendation on the Historic Urban Landscape (WHITRAP Shanghai 26-28 March 2018):

"The New Urban Agenda and SDGs provide a framework of greater urgency"

"The NUA provides for an integrative approach engaging with culture in all its facets"

"To streamline reporting: SDG (UN), the 2019 UNESCO HUL and the 2020 UN Habitat NUA"

This forward thinking is recognising the potential of the SE Region and its people and harnessing this energy, skill, experience, assets and capacity to spur "Our Region" to the next generation as "Our Ancestors" did. According to the Scan City results Regjun Xlokk identified seven major concerns. These are nutrition and related diseases, quality of public transport, road quality, safe passage for bicycles, tolerance of cultural differences, inclusion of cultural identities and migration. Artistic expression was identified as a regional strength.

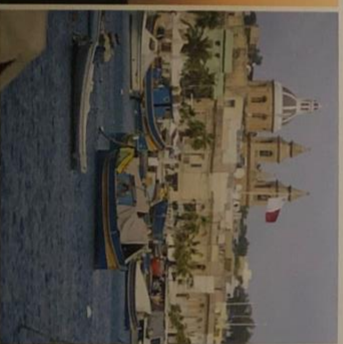
With regard to City and Landscape sustainability, seven major concerns were identified including environmental pollution (in general), air pollution, greenhouse gas emissions from transport and from other sources, slow onset impacts of climate change, as well as community and SERC staff capacity to prepare for and respond to climate change. In terms of City Governance, SERC highlighted six major concerns including financial resources, capacity to secure external funding, leadership and management skills, modern IT infrastructure, adequate staff skills and appropriate number of staff. These targets as seen through the document have become the scope of the SE Region's mission and vision.

This approach further supports the Government's ability to deliver Quoting Hon. Dr Owen Bonnici Minister for Justice, Culture and Local Government in his opening message:

"Our commitment is to invest within this ever-growing sector, to keep on improving the quality of our cultural activities, whilst also safeguarding and promoting our local traditions and customs through innovative approaches." (Refer to Minister's Note)



5.10.1 Keon of the South East Region's Landscape: Dawn, Valletta.



5.10.2 Keon of the South East Region's Landscape: Day, Marsaxlokk.



5.10.3 Keon of the South East Region's Landscape: Night: The Grand Harbour.

SIGNIFICANCE STATEMENT

TABLE SA2: THE SIGNIFICANCE VALUES, SOUTH EAST REGION PRELIMINARY ASSESSMENT

SOUTH EAST REGION: MALTA: PRELIMINARY SIGNIFICANCE STATEMENT: HISTORIC URBAN LANDSCAPE — TABLE SS_2 of SS_3			
LANDSCAPE COMPONENT	SIGNIFICANCE		GRADING
1 THE EVOLUTION OF THE LOCAL ENVIRONMENT	Aesthetic Value: Historic Value: Scientific Value: Social Value: Spiritual Value: Architectural Value: Archaeological Value:		5
2 THE ANCESTRAL INHERITANCE	Aesthetic Value: Historic Value: Scientific Value: Social Value: Spiritual Value: Architectural Value: Archaeological Value:		6
3 BUILDING SETTLEMENTS, URBANISATION AND COLONISATION	Aesthetic Value: Historic Value: Scientific Value: Social Value: Architectural Value: Archaeological Value:		5
4 ARCHITECTURE AS A MALTESE VERNACULAR	Aesthetic Value: Historic Value: Scientific Value: Social Value: Spiritual Value: Architectural Value: Archaeological Value:		5
5 MARITIME LIFE AS A MALTESE RAISON D'ÊTRE	Aesthetic Value: Historic Value: Scientific Value: Social Value:		5
6 MALTESE AS AN ISLANDER PEOPLE WITH A UNIQUE LANGUAGE	Historic Value: Historic Value: Scientific Value: Social Value: Spiritual Value:		6
7 MALTESE AS A SOCIO-CULTURAL RESOURCE	Historic Value: Historic Value: Scientific Value: Social Value: Spiritual Value:		5
8 MALTESE CUISINE AS AN EXPRESSION OF CULTURAL IDENTITY	Aesthetic Value: Historic Value: Scientific Value: Social Value: Spiritual Value:		5
9 THE RELIGIOUS, SPIRITUAL, DEVOTIONAL, SITES AND SPACES	Aesthetic Value: Historic Value: Scientific Value: Social Value: Spiritual Value: Architectural Value: Archaeological Value:		6
10 THE REGION AS A THEATRE OF WAR AND PEACE	Aesthetic Value: Historic Value: Scientific Value: Social Value: Spiritual Value: Architectural Value: Archaeological Value:		6
11 HERITAGE COLLECTIONS AND SITES	Aesthetic Value: Historic Value: Scientific Value: Social Value: Spiritual Value: Architectural Value: Archaeological Value:		5
12 THE SYMBOLS AND ICONS OF THE SOUTH EAST REGION AND THE NATION	Aesthetic Value: Historic Value: Scientific Value: Social Value: Spiritual Value: Architectural Value: Archaeological Value:		4

- NOTES:**
- This Preliminary Significance Assessment has been compiled and developed as part of the Historic Urban Landscape Process Map submitted to UNESCO WHTRAP in 2018. Compiled, prepared and written by Dr Makiem Borg (HUL Coordinator SE Region) for the SE Region and for HUL Process Map (Pre-Consultation: Values may change)
 - ICOMOS Guide for Assessing Value of Heritage Assets.
 - ICOMOS Burra Charter Cultural Significance Guidelines.



HUL PROCESS MAP 2018
Compiled and written M.BORG 2019.



- Underwater WWII wrecks are archaeological heritage, evidence and memorials.
- The collection at the inquisitor's palace is significant locally, nationally and of international importance for its scientific relevance.

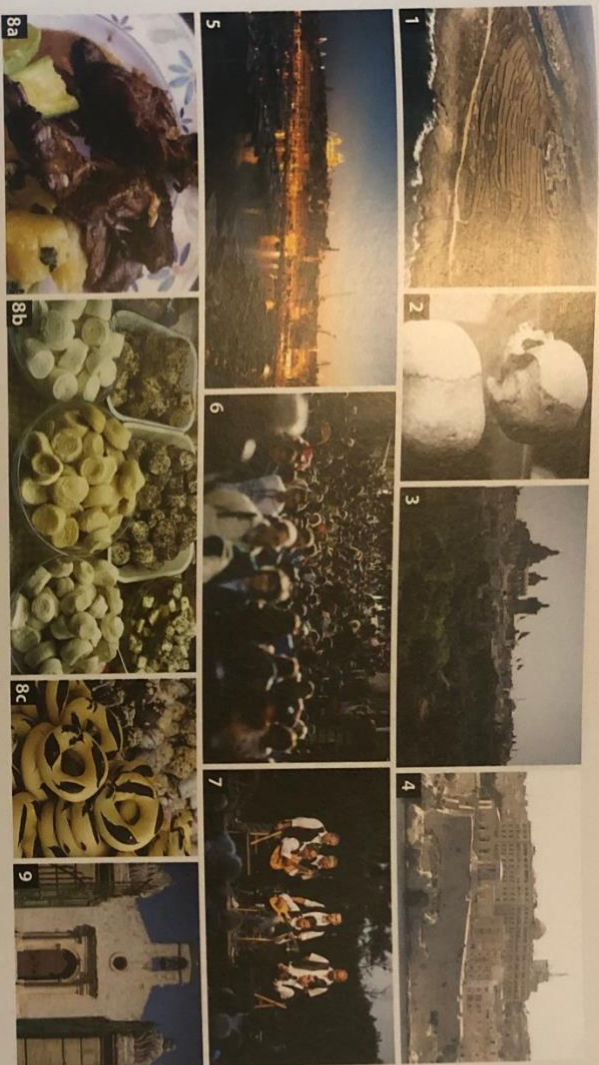


Photo Credits:

1. Coastline in the South East.
2. Hal-Saffient Hypogeum; ancestral connections
3. Colonisation-urbanisation, the impact is still tangible.
4. Maltese architecture is modelled out of the rock.
5. Maltese are a seafaring people.
6. Maltese are islanders with a unique language.
7. Ghana festival; a celebrated tradition.
- 8 (a), (b), (c): Maltese typical food: Fried Rabbit, Cheesecakes and Honeyrings.
- 9.Zejtun: St.Gregory is one of the earliest churches in the SE Region.

(2) <https://www.guidemalta.com/en/why-are-these-elongated-skulls-at-hal-saffient-hypogeum-shrouded-in-mystery>, viewed 25 March 2019.

(6) Malta Independent 2012, <https://www.independent.com.mt/articles/2015-01-31/Health/Health-at-a-glance-report-shows-over-16-per-cent-of-Maltese-population-in-2012-aged-over-65-6736129387>, viewed 25 March 2019.

(7) Ghana Mali facebook page, <https://www.facebook.com/pg/Ghana-Mali-76062854406487/posts/>, viewed 25 March 2019.

(8) Chafitucha, https://en.wikipedia.org/wiki/Maltese_cuisine#/media/File:Rabbit_w_Ghejra.JPG, viewed 25 March 2019.