

STRELKA KB 

THE UN GLOBAL
COMPACT
COMMUNICATION
ON PROGRESS
2021



MESSAGE FROM OUR CEO



I confirm that we support the ten principles of the UN Global Compact. In our first Communication on Progress, we describe how we integrate the Global Compact's principles in our business strategy, corporate culture, and project activities.

All Strelka KB's projects are focused on sustainable development and improving sustainability of complex socio-economic systems, be it an individual company, a city, or a territory. Our approach involves compliance with the requirements of the Global Compact in all areas, from infrastructure and industry to public spaces and supply chains.

Joining the Global Compact also contributes to the development of our corporate strategy. All of us at Strelka KB share the view that adherence to the ten principles of the UN Global Compact is an important factor in the company's long-term sustainable development.



Denis Leontiev

Co-founder and CEO
of Strelka KB

<div>PART 1</div> <div>About Strelka KB</div> <div>Strelka family5</div> <div>Our approach6</div> <div>Company history7</div> <div>Key areas of expertise8</div> <div>Product portfolio9</div> <div>Our team10</div>	<div>PART 2</div> <div>Compliance of the company’s internal operations with the 10 principles of UN Global Compact</div> <div>The Ten Principles of the UN Global Compact12</div> <div>Human rights13</div> <div>Labour14</div> <div>Environment16</div> <div>Anti-Corruption17</div>	<div>PART 3</div> <div>Compliance of the company’s external operations with the UN Sustainable Development Goals</div> <div>Advisory services on sustainable urban development19</div> <div>Contribution to the UN Sustainable Development Goals20</div>	<div>PART 4</div> <div>Projects and studies24</div>
--	---	--	---

ABOUT STRELKA KB



STRELKA FAMILY

STRELKA KB 

The group of companies specialises in various aspects of development and urbanisation – from futuristic visions of development strategies for cities and territories to specialised programmes and architectural supervision.

STRELKA INSTITUTE

International post-graduate educational institution in the fields of architecture, design, and media. The Institute has been listed as one of Europe's top 100 schools selected by Domus.

Established: **2009**

STRELKA KB

Leading international strategic consultancy of the field of spatial development. The public benefit company connects governments, businesses, and communities to create sustainable development solutions.

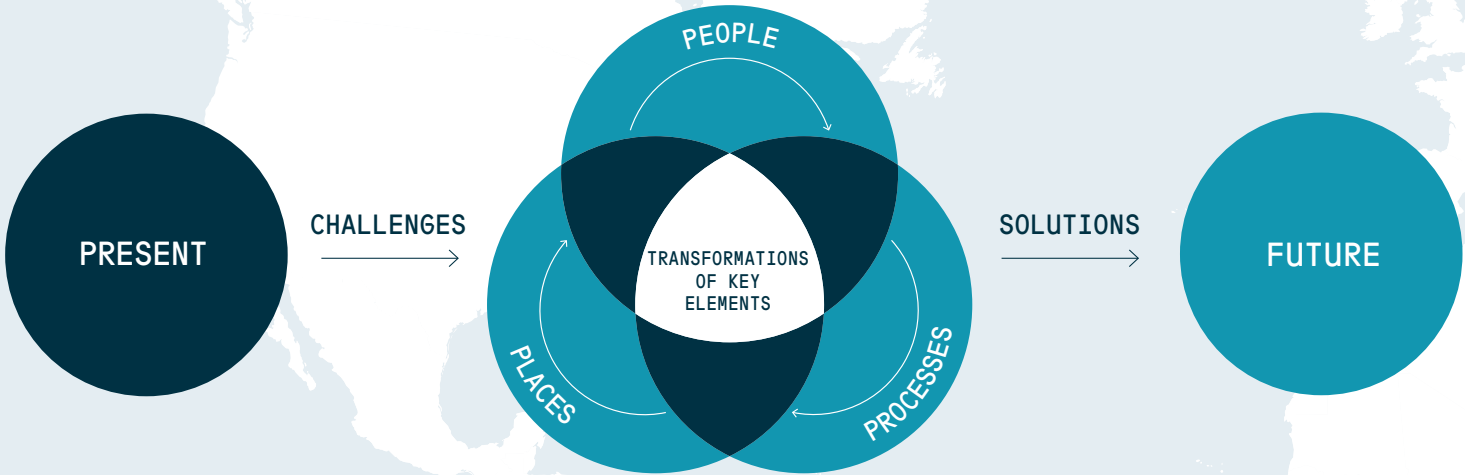
Established: **2013**

STRELKA CA

Strelka CA is an architectural firm focused on creating and implementing smart and efficient design solutions that transform people's everyday experience and their interaction with public spaces.

Established: **2015**

We specialise in transforming spaces, processes, and connections. We focus on both big and small cities — understanding their present and shaping their future.



Strelka KB has a unique international network of urban development experts and a wealth of experience working with leading international educational and professional organisations.

13

countries of our expertise including the USA, Singapore, China, Israel, Germany, and Thailand

> 480

projects implemented

390

cities involved

3,000+

experts in the network

> 90%

of projects contribute to the UN SDGs achievement



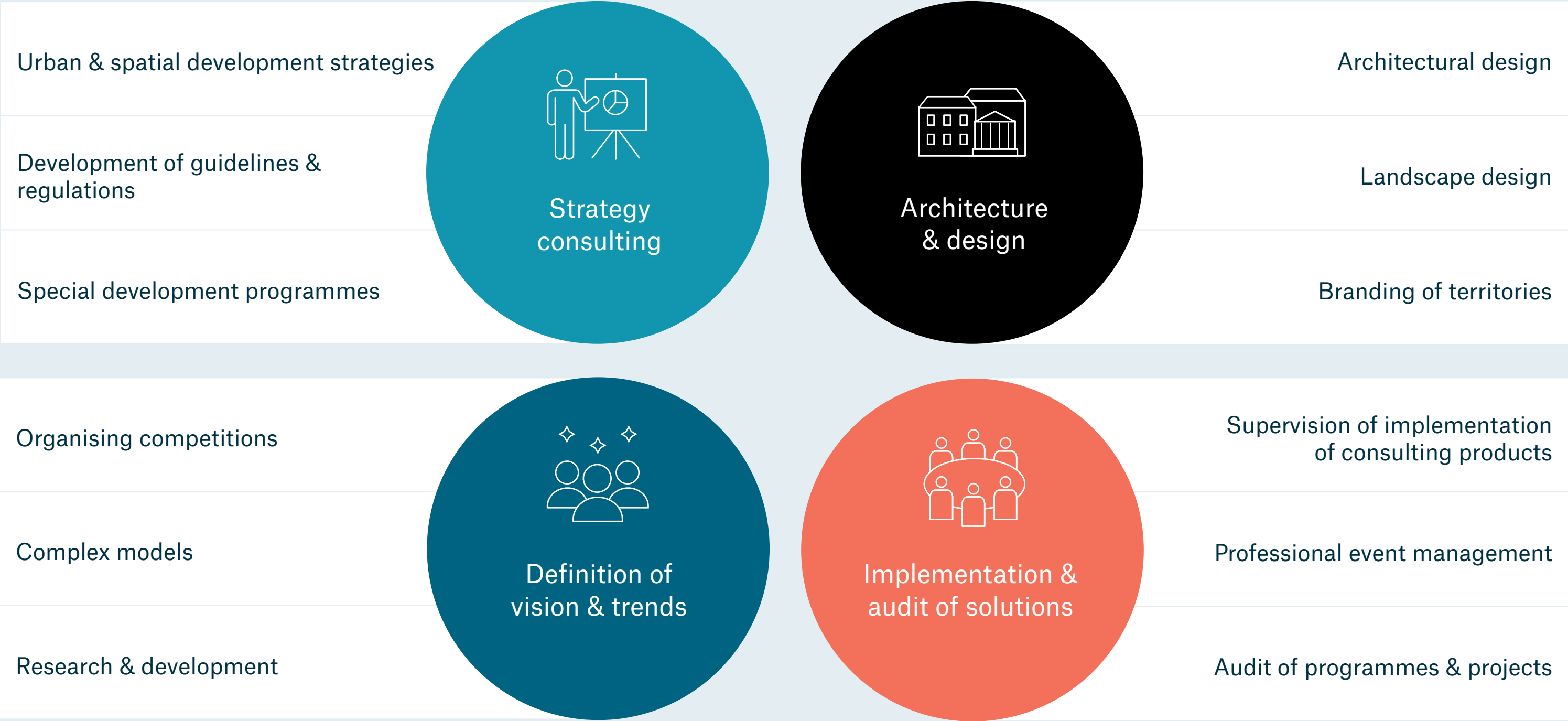
KEY AREAS OF EXPERTISE

Our expertise enables us to improve entire cities and individual industries, identify patterns of development, and predict trends.

Mobility & logistics		Healthcare & medical facilities
Consumer goods & services		Sports facilities & infrastructure
Agriculture & rural settlements		Educational & scientific infrastructure
Development & construction		
Sustainable development & ESG		Tourism industry
Comfortable urban environment & landscapes		Business facilities & SME
Planning and development of cities, agglomerations & regions		Cultural & creative industries
Urban technologies		
		

PRODUCT PORTFOLIO

Generation of comprehensive solutions for urban development and implementation of successful projects – drivers of positive changes – on a scale from a single venue to giant metropolitan areas.



A multidisciplinary team of economists, sociologists, data scientists, architects, and urban planners enables implementation of integrated multifactorial projects.

250

employees

30%

employees graduated from top 200 QS World Rankings universities

> 100

consultants and analysts

A worldwide network of experts enables us to attract experts or industry leaders from anywhere in the world to find the best solutions for our projects.

> 50

countries in Strelka KB's expert network

3,000+

experts

In-house Competence Centres develop methodology, collect data, and implement highly specialised interdisciplinary applied research.

AI Lab

SML (social media listening) research, digital platform development

Centre for Urban Economics

Real estate economics, financial modeling, SME-focused research

5

centres of core competencies

Center for Urban Resilience and Ecology

Environmental studies with a special focus on links between built and natural environments

GIS Analysis Centre

GIS analysis and interpretation, geo analytics toolkits and data mining

> 50

researchers and analysts

Centre for Urban Anthropology

Applied sociocultural and marketing studies providing feedback and insights from various user groups and communities

COMPLIANCE OF THE COMPANY'S INTERNAL OPERATIONS WITH THE 10 PRINCIPLES OF UN GLOBAL COMPACT



THE TEN PRINCIPLES OF THE UN GLOBAL COMPACT

COMMUNICATION
ON PROGRESS







Strelka KB supports the initiatives of the UN Global Compact, a major international initiative in the field of corporate social responsibility. The Compact envisages involvement of business structures in sustainable development activities and establishment of a global partnership between state and corporate sectors.

The Global Compact provides for the involvement of business structures in sustainable development activities and formation of a global partnership between the state and corporate sectors.

The principles of sustainable development have always underpinned our activities. In May 2021, we joined the UN Global Compact, reaffirming our commitment to its principles and our willingness to shape the stable and open global economy and to promote sustainable development.

We view participation in the Global Compact as a unique strategic opportunity to advance the principles of corporate social responsibility, improve corporate governance, and contribute to a sustainable future for all.

 HUMAN RIGHTS	 LABOUR	 ENVIRONMENT	 ANTI-CORRUPTION
PRINCIPLE 1 Businesses should support and respect the protection of internationally proclaimed human rights	PRINCIPLE 3 Business should uphold the freedom of association and the effective recognition of the right to collective bargaining	PRINCIPLE 7 Business should support a precautionary approach to environmental challenges	PRINCIPLE 10 Business should work against corruption in all its forms, including extortion and bribery
PRINCIPLE 2 Make sure that they are not complicit in human right abuses	PRINCIPLE 4 The elimination of all forms of forced and compulsory labour	PRINCIPLE 8 Undertake initiatives to promote greater environmental responsibility	
	PRINCIPLE 5 The effective abolition of child labour	PRINCIPLE 9 Encourage the development and diffusion of environmentally friendly technologies	
	PRINCIPLE 6 The elimination of discrimination in respect of employment and occupation		

KB Strelka considers human rights to be the highest value. We strictly monitor compliance with them — both in our office and when working with partners.



PRINCIPLE 1

Businesses should support and respect the protection of internationally proclaimed human rights

At Strelka KB, we make sure that human rights are not violated and take care to ensure that employees and business partners comply with the international human rights declarations.

As part of our global diversity efforts, we hire employees from around the world so that people from different cultures, with varied backgrounds and perspectives can work together and learn from each other.

Representatives of 7 countries work at Strelka KB



PRINCIPLE 2

Make sure that they are not complicit in human right abuses

When selecting clients and projects we assess their position regarding human rights and terminate cooperation if we find evidence of the failure to respect such rights.

Zero tolerance for disrespect of human rights



Employees are the most important asset of Strelka KB. We comply with labour laws and pay great attention to employee well-being, professional growth, and engagement.



PRINCIPLE 3

Business should uphold the freedom of association and the effective recognition of the right to collective bargaining

At Strelka KB, we have a democratic management style. We strive to create a comfortable workplace and encourage interaction within a flat hierarchy. In our view, this is a prerequisite for both the creative processes and our project delivery methodology.

Every employee, regardless of their position, knows that they can express their opinion directly to the management, and that this opinion will be taken into account, so everyone is aware of their importance to the company.

At Strelka KB we support the creation of labour and professional associations.



PRINCIPLE 4

The elimination of all forms of forced and compulsory labour

We oppose any form of forced or compulsory labour and have no tolerance for it either in our own office or in the offices of our partners.

In nine years of operation, there have been no breaches of labour law, no labour disputes with employees, and no litigation over these issues. Every employee is fully aware of their rights, rewards, and responsibilities and is provided with everything they need to work both remotely and from office.

We abide by workplace safety requirements. We routinely take water and air quality measurements for key pollutants and microclimatic indicators.

We provide social guarantees and benefits to support the health and well-being of our employees: voluntary health insurance, accident insurance, overseas insurance, birth allowance for mothers, supplemental payments to ensure full salary is paid on the months employees take vacations or go on business trips, assistance with expensive medical treatments.

We have made our office pet friendly, and employees can bring their pets to work.

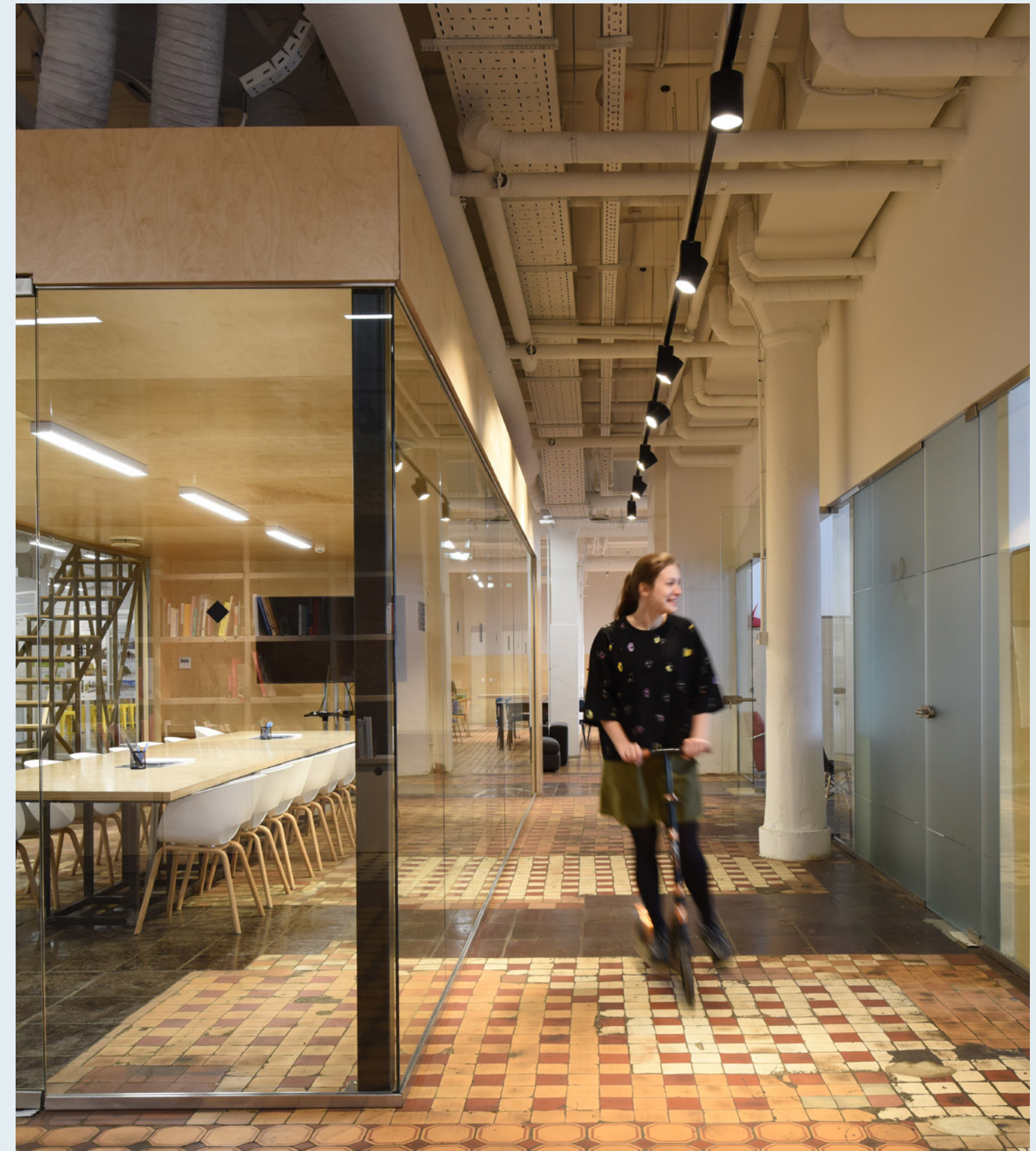
100% payment for sick leave

100% compliance with labour contracts and labour legislation

0 instances instances of labour disputes with employees, investigations of labour violations, and related litigation

100% compliance with workplace safety requirements

0 workplace injuries and accidents





PRINCIPLE 5

The effective abolition of child labour

Strelka KB condemns child labour, does not participate in any projects that use it, and will make every effort to abolish this practice everywhere.

Zero tolerance for any form of child labour



PRINCIPLE 6

The elimination of discrimination in respect of employment and occupation

Diversity is an integral part of our corporate culture. We pride ourselves in the fact that we extend equitable opportunities to all our employees. All employment decisions are made solely based on the specific person’s talents and skills.

Strelka KB has banned all forms of discrimination: by race, nationality, religion, or gender, by descent, sexual orientation, age, citizenship, marital status, physical disability, etc.

All new employees are informed of the zero tolerance policy on discrimination, bullying, and sexual harassment in the workplace and beyond.

We have a strong focus on gender equality and strive to have equal representation at all management levels. There is also no gender inequality in terms of salaries.

The students who intern at Strelka KB are given a fair wage and labour guarantees.

Women hold 60% of all management positions

Women account for 67% of the total number of employees



KB Strelka contributes to environmental protection by implementing environmental initiatives both within the company and when working on projects.
In 2021, the company established the Centre for Sustainable Development.



PRINCIPLE 7

Business should support a precautionary approach to environmental challenges

For every project, we assess the environmental and climatic risks and develop measures to improve the current ecological state of the area.

100% of projects undergo an environmental assessment and include recommendations for environmental impact reduction as well as a climate change adaptation plan



PRINCIPLE 8

Undertake initiatives to promote greater environmental responsibility

We strictly adhere to the principles of sustainable consumption (the "5 R's": refuse, reduce, reuse, repurpose, recycle).

The company has waste reduction programmes, including separate collection of waste and hazardous waste. We have also introduced programmes to reduce consumption of resources, such as water, electricity, paper, and office supplies.

A responsible approach to the environment is reflected in many details of the company's daily life. For example, the office has energy efficient lamps; the kitchen is equipped with a waste disposal unit for leftover food; and only eco-labelled household chemicals that do not contain carcinogenic, mutagenic, toxic, irritating, or non-degradable components are used for cleaning.

We have also introduced employee swap parties as part of the responsible consumption initiative.

We work on raising our employees' environmental awareness through lectures and workshops.

- >90%** of daily waste is sorted
- 100%** of household cleaning supplies are eco-labelled
- 100%** of employees are aware of the principles of sustainable development and environmental management



PRINCIPLE 9

Encourage the development and diffusion of environmentally friendly technologies

Sustainable technology is a mandatory part of any Strelka KB project. We focus on green building standards, including LEED, BREEAM, Green Zoom, and look for ways to design cities and buildings as dual ecosystems. The examples of such approaches include green infrastructure and renewable energy, reclamation of disturbed land, restoration of the cities' water-green framework, introduction of the best available technologies (BAT) at production facilities.

We check that our partners comply with the environmental principles, including the IFC Performance Standards and the Equator Principles.

Using geospatial analysis, we create and test urban models and development strategies as well as environmental control tools that help to balance the environment with the society's needs without compromising future generations.

Our eco-oriented studies help raise environmental awareness: we publicise them widely in the media. Strelka KB also participates in exhibitions, forums, and conferences that seek to engage broad communities and narrow professional groups in solving environmental problems.

- Up to 60 mln people** — the reach of every study
- 100%** of projects done by Strelka KB are assessed for compliance with IFC performance standards and the Equator Principles
- >150** projects are guided by green construction standards



Strelka KB has a zero-tolerance policy towards corruption, bribery, and extortion. The company complies with all the relevant laws and regulations and adopts the best anti-corruption practices.




PRINCIPLE 10

Business should work against corruption in all its forms, including extortion and bribery

Strelka KB and anyone associated with the company may not offer, pay, promise, authorise, or receive bribes or other illegal payments.

We value the transparency of financial flows and keep records of all transactions. Funding information is verified by the Finance Department, Human Resources, and the company's CEO.

We have also developed our own anti-corruption policy.

 court cases, rulings, and proceedings related to corruption



COMPLIANCE OF THE COMPANY'S EXTERNAL OPERATIONS WITH THE UN SUSTAINABLE DEVELOPMENT GOALS



ADVISORY SERVICES ON SUSTAINABLE URBAN DEVELOPMENT

Strelka KB supports the United Nations Sustainable Development Goals (SDGs). We take specific actions on those SDGs where we can make the greatest contribution.

Recognising the importance of all 17 goals, we focus on the 11 of them.

We consider Goal 11 – Making cities and human settlements inclusive, safe, resilient, and sustainable – to be our main one. To achieve it, we develop comprehensive strategies and plans to remove social barriers, reduce negative environmental impacts, use resources more efficiently, mitigate climate change, and make cities more resilient to natural disasters.

We aim to scale up sustainable urbanisation for integrated planning of human settlements.

SUSTAINABLE DEVELOPMENT GOALS (SDGS)



CONTRIBUTION TO THE UN SUSTAINABLE DEVELOPMENT GOALS



GOAL 3.
Ensure healthy lives and promote well-being for all at all ages

3.9 By 2030, substantially reduce the number of deaths and illnesses from hazardous chemicals and air, water and soil pollution and contamination



GOAL 4.
Ensure inclusive and equitable quality education and promote lifelong learning opportunities for all

4.4 By 2030, substantially increase the number of youth and adults who have relevant skills, including technical and vocational skills, for employment, decent jobs and entrepreneurship

4.7 By 2030, ensure that all learners acquire the knowledge and skills needed to promote sustainable development, including, among others, through education for sustainable development and sustainable lifestyles, human rights, gender equality, promotion of a culture of peace and nonviolence, global citizenship and appreciation of cultural diversity and of culture's contribution to sustainable development



GOAL 6.
Ensure availability and sustainable management of water and sanitation for all

6.1 By 2030, achieve universal and equitable access to safe and affordable drinking water for all

6.3 By 2030, improve water quality by reducing pollution, eliminating dumping and minimizing release of hazardous chemicals and materials, halving the proportion of untreated wastewater and substantially increasing recycling and safe reuse globally

6.6 By 2020, protect and restore water-related ecosystems, including mountains, forests, wetlands, rivers, aquifers and lakes

OUR CONTRIBUTION:

We investigate the sources of negative impact on people's health and find links between the urban environment and the spread of various diseases.

We help our partners implement the healthy city principles and develop the programmes to reduce the urban environment's negative impact on the residents of metropolitan cities, industrial centres, and single-industry towns, as well as the programmes to help them maintain healthy lifestyles.

OUR CONTRIBUTION:

We help develop educational programmes for urban planners and architects.

The experts of Strelka KB develop programmes and lectures on urban management and environmental initiatives to help our partners achieve their sustainability goals.

Our projects include functional models of future-proof schools, intercollegiate campuses, and university towns with innovative educational environments

OUR CONTRIBUTION:

We develop strategies to reduce the negative impact on the environment, including water bodies, programmes to protect and restore water-related ecosystems, and recommendations for water reuse. Our portfolio includes integrated green frame projects for cities using green roofs, bio-drainage ditches, and rain gardens.

We also develop recommendations for increasing the share of quality and safe drinking water, as well as for safe wastewater treatment.

CONTRIBUTION TO THE UN SUSTAINABLE DEVELOPMENT GOALS



GOAL 7.
Ensure access to affordable, reliable, sustainable and modern energy for all

- 7.1 By 2030, ensure universal access to affordable, reliable and modern energy services
- 7.2 By 2030, increase substantially the share of renewable energy in the global energy mix



GOAL 8.
Promote sustained, inclusive and sustainable economic growth, full and productive employment and decent work for all

- 8.9 By 2030, devise and implement policies to promote sustainable tourism that creates jobs and promotes local culture and products



GOAL 9.
Build resilient infrastructure, promote inclusive and sustainable industrialization and foster innovation

- 9.1 Develop quality, reliable, sustainable and resilient infrastructure, including regional and trans-border infrastructure, to support economic development and human well-being, with a focus on affordable and equitable access for all
- 9.4 By 2030, upgrade infrastructure and retrofit industries to make them sustainable, with increased resource-use efficiency and greater adoption of clean and environmentally sound technologies and industrial processes, with all countries taking action in accordance with their respective capabilities

OUR CONTRIBUTION:

We conduct research and develop programmes for advancement of renewable energy technologies.

We help our clients to create energy efficient projects compliant with LEED and BREEAM and offer ESG solutions for the construction industry.

OUR CONTRIBUTION:

We develop the tools to improve governance and stimulate the economy, recommendations for SMB development, including those working in creative and knowledge-intensive sectors, as well as for retaining highly skilled personnel. We strive to increase interaction between academia and business, raise productivity through innovative solutions, and develop international business relations and trade.

Our urban development projects aim to create new drivers of sustainable economic growth given the resources that a particular city has at its disposal.

We also work on sustainable tourism programmes that help to create jobs, develop local culture, and produce local products.

OUR CONTRIBUTION:

We investigate the state of infrastructure and develop projects based on the principles of environmental neutrality, micro-mobility, multimodality of transportation, and barrier-free environment.

They increase sustainability of infrastructure through a more efficient use of resources and a greater use of environmentally friendly technologies and industrial processes.

CONTRIBUTION TO THE UN SUSTAINABLE DEVELOPMENT GOALS



GOAL 11.
Make cities and human settlements inclusive, safe, resilient and sustainable

- 11.1** By 2030, ensure access for all to adequate, safe and affordable housing and basic services and upgrade slums
- 11.2** By 2030, provide access to safe, affordable, accessible and sustainable transport systems for all, improving road safety, notably by expanding public transport, with special attention to the needs of those in vulnerable situations, women, children, persons with disabilities and older persons
- 11.3** By 2030, enhance inclusive and sustainable urbanization and capacity for participatory, integrated and sustainable human settlement planning and management in all countries
- 11.4** Strengthen efforts to protect and safeguard the world’s cultural and natural heritage

- 11.6** By 2030, reduce the adverse per capita environmental impact of cities, including by paying special attention to air quality and municipal and other waste management
- 11.7** By 2030, provide universal access to safe, inclusive and accessible, green and public spaces, in particular for women and children, older persons and persons with disabilities
- 11.b** By 2020, substantially increase the number of cities and human settlements adopting and implementing integrated policies and plans towards inclusion, resource efficiency, mitigation and adaptation to climate change, resilience to disasters, and develop and implement, in line with the Sendai Framework for Disaster Risk Reduction 2015-2030, holistic disaster risk management at all levels

OUR CONTRIBUTION:

We are committed to enhancing sustainable urbanisation. We offer the tools that improve the quality of planning and sustainability of areas, including integrated spatial development standards and strategic master plans for cities. They aim to create an urban environment that is comfortable for residents while simultaneously promoting business development and preserving the nature.

We develop recommendations on increasing the share of green spaces and creating green infrastructure, on renovating housing without demolition, on waste management, and the use of best available technologies (BAT) in the industry.

We also create projects that improve road safety and increase the use of public transport.

We strive to protect the world's cultural and natural heritage and in developing our projects minimise the introduction of urban functionality into natural ecosystems.



GOAL 12.
Ensure sustainable consumption and production patterns

- 12.2** By 2030, achieve the sustainable management and efficient use of natural resources
- 12.5** By 2030, substantially reduce waste generation through prevention, reduction, recycling and reuse
- 12.8** By 2030, ensure that people everywhere have the relevant information and awareness for sustainable development and lifestyles in harmony with nature
- 12.b** Develop and implement tools to monitor sustainable development impacts for sustainable tourism that creates jobs and promotes local culture and products

OUR CONTRIBUTION:

We develop waste management strategies such as programmes to minimise waste, increase recycling rates and the use of recycled materials, including recommendations for the use of low-carbon materials and technologies that reduce CO2 emissions.

Strelka KB also shares information about sustainability and sustainable lifestyle by way of its special projects and articles in the media.

CONTRIBUTION TO THE UN SUSTAINABLE DEVELOPMENT GOALS



GOAL 13.
Take urgent action to combat climate change and its impacts

13.1 Strengthen resilience and adaptive capacity to climate-related hazards and natural disasters in all countries

13.3 Improve education, awareness-raising and human and institutional capacity on climate change mitigation, adaptation, impact reduction and early warning



GOAL 15.
Protect, restore and promote sustainable use of terrestrial ecosystems, sustainably manage forests, combat desertification, and halt and reverse land degradation and halt biodiversity loss

15.1 By 2020, ensure the conservation, restoration and sustainable use of terrestrial and inland freshwater ecosystems and their services, in particular forests, wetlands, mountains and drylands, in line with obligations under international agreements

15.5 Take urgent and significant action to reduce the degradation of natural habitats, halt the loss of biodiversity and, by 2020, protect and prevent the extinction of threatened species



GOAL 17.
Strengthen the means of implementation and revitalize the Global Partnership for Sustainable Development

17.17 Encourage and promote effective public, public-private and civil society partnerships, building on the experience and resourcing strategies of partnerships

OUR CONTRIBUTION:

We analyse hazardous climate processes and natural phenomena, build maps of climate belt shifts, and calculate the carbon footprint of our projects. Based on this data, we develop recommendations for cities to improve their adaptation to climate change, including protection from floods, fires, and tsunamis, as well as recommendations for reduction of greenhouse gas emissions.

We share our research in the media to raise the public's climate change awareness.

OUR CONTRIBUTION:

We create solutions to increase the share of green spaces, enhance their sustainability, and create a unified water and green framework. We also develop recommendations on restoring lost ecosystems, lands, and soils ravaged by the construction activities.

OUR CONTRIBUTION:

We share our data, ideas, and information with partners and jointly develop solutions to environmental and social problems. Among other things, we organise discussions with the UNICEF experts as part of the Cities for Children initiative and prepare recommendations on enhancing the young professionals' skills in spatial and anthropological analysis of territories together with the United Nations Development Programme (UNDP).

PROJECTS AND STUDIES



MASTER PLAN OF VELO1 CYCLING ROUTE, MOSCOW – SAINT PETERSBURG

STRELKA KB 



Development of a master plan, follow-through with design documentation, and implementation of the first national bicycle route connecting Moscow and St. Petersburg. The route helps to develop and popularise cycling tourism in Russia.

Environmental effect:

- Promotion of environmentally friendly transportation
- Development of ecotourism in Russia.

Social effect:

- Development of the local cycling community
- Improvement of the quality of life of people who live near the route
- Establishment of healthy recreational options for the residents.

Economic effect:

- New workplaces
- Small business development on the territories adjacent to the route
- Increasing connectedness of the territories.

1,426 km

total route length

6

administrative regions
along the way

30 railway stations

to offer cycling facilities
and services

16 cities

along the route





Development of an area that has faced decades of socioeconomic and environmental problems related to the operation of Baikal Pulp and Paper Mill. The project will modernise transport and utility infrastructure, develop recreation and tourism, improve the quality of urban environment, and reduce the negative impact on Lake Baikal.

Environmental effect:

- Waste disposal at Baikal Pulp and Paper Mill
- Prevention of sewage and wastewater discharge into the water body through construction and modernisation of utility systems
- Organisation of tourist flows to reduce the negative human impact on the natural ecosystems.

Social effect:

- Establishment of a comfortable urban environment and efficient infrastructure
- Improving the residents' quality of life and reducing youth drain.

Economic effect:

- Increasing the investment attractiveness of the city
- Development of new sectors of post-industrial economy
- New workplaces.

> 100 km

of new ecotrails at Baikalsk and surrounding areas

19

new and reconstructed educational facilities

5.5 km

of new roller ski trails



RECONSTRUCTION OF A SECONDARY SCHOOL, YAKUTIA

STRELKA KB 



Reconstruction of the only school in the village of Kysyl-Syr in Yakutia. The project will help to make the school a comfortable place for studies and a cultural centre for all the residents. It's important that the project can be used as a template for comprehensive reconstruction of standard school buildings in cities and towns across Russia, including those located in the harsh permafrost conditions.

Environmental effect:

- The use of fewer materials than for the construction of a new school
- Replacement of all utilities systems with more energy efficient ones as well as replacement of all finishing materials.

Social effect:

- Engagement of talented professionals who come to the village
- Creation of a new public and educational centre for all residents of Kysyl-Syr.

Economic effect:

- Less capital expenditure compared to construction of a new building
- Possibility of scaling design solutions to other standard schools, which will make their reconstruction faster and cheaper while guaranteeing high quality.

1 year
to complete
reconstruction

30 %
more studying
seats

> 350
students

120 mln rubles
total cost of
reconstruction



SUSTAINABLE DEVELOPMENT CONCEPT FOR VEZHDINO PARK, SYKTYVKAR

STRELKA KB 



Creation of a new park in a residential area of Syktyvkar that caters to the residents' needs and reflects traditions of the Komi people.

Environmental effect:

- Establishment of new social connections and local communities
- Environmental awareness of the residents and introduction to traditions of the Komi people.

Social effect:

- Additional regional tourist traffic
- Development of small and medium-sized businesses in the park and adjacent streets.

Economic effect:

- Increased share of green spaces
- Environmental rehabilitation of the area
- Increased biodiversity
- Preservation of the natural hydrological cycle.

32 ha
project
area

1.6 mln ppl
year planned park
attendance

62 thousands
residents of the
neighbourhood

Architects:
Strelka CA



STUDY, “MOSCOW, THE CITY OF 150 RIVERS”

STRELKA KB 



The study aims to restore the natural appearance of Moscow’s rivers.

Open riverbeds can become spaces for recreation of residents, improve the quality of the urban environment, reduce the effects of climate change, help in flood control, and reduce the heat island effect.

<https://media.strelka-kb.com/moscow-rivers>



The study

was presented at the Paris Peace Forum

50 %

of the river network is confined within culverts

218 km

of historical streams of waters can be potentially restored as part of the natural landscape



STUDY OF THE STATE OF CYCLING INFRASTRUCTURE IN 15 CITIES WITH MORE THAN A MILLION RESIDENTS



In a joint study with Delivery Club service, we analysed the state of cycling infrastructure in 15 Russian cities with a population of one million or more, defining the principal barriers and opportunities for development.

Based on the research, we compiled the rating of the best cities for bike riders, taking into account the extension and location of bike trails, the convenience and safety of riding. The best cities for bike riders proved to be Ufa, Perm, Volgograd, Yekaterinburg, and Samara.

<https://velofuture.strelka-kb.com/>

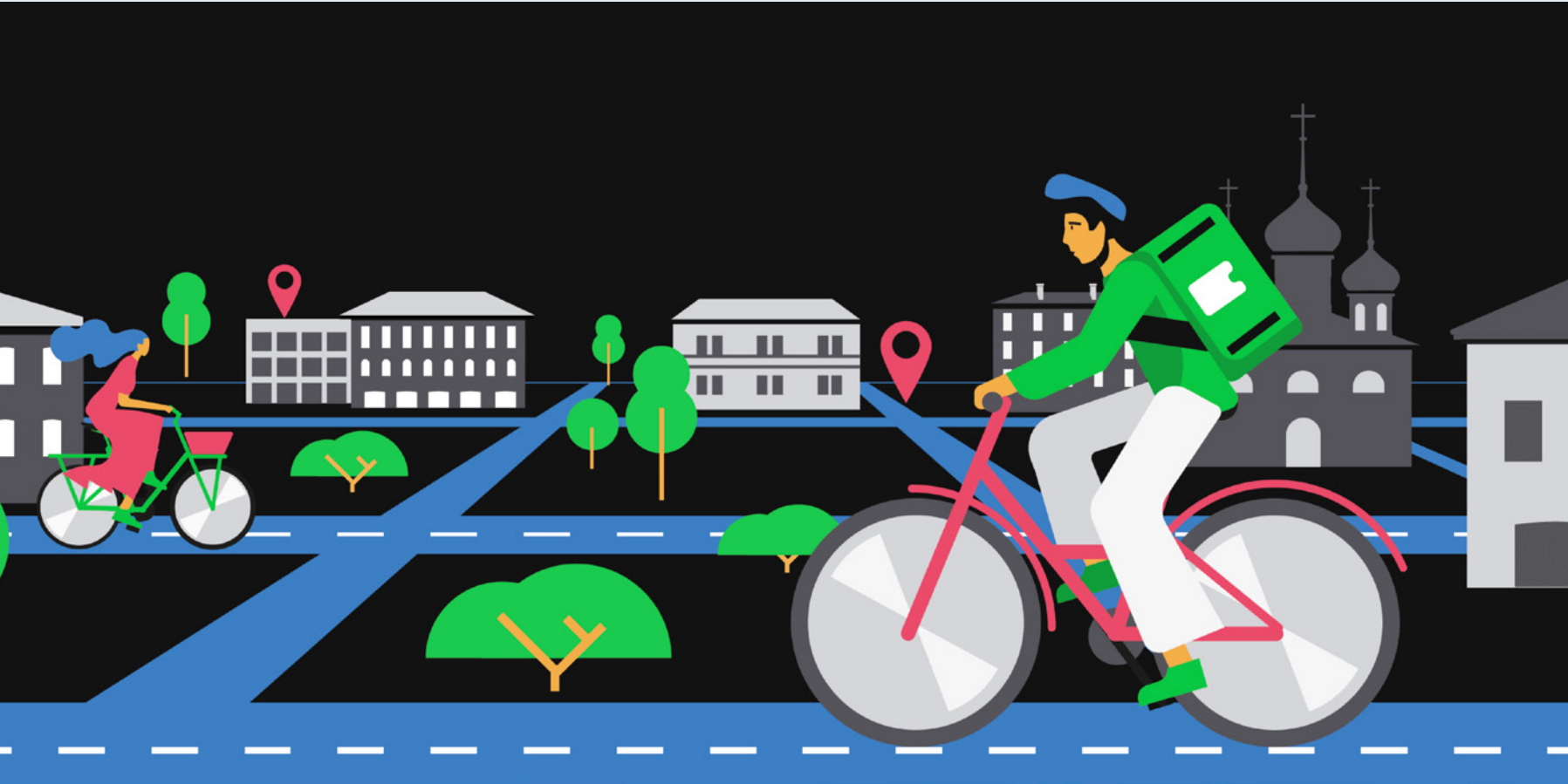


15
cities surveyed

5 steps
of cycling infrastructure development

National
communication campaign

First driving regulations
for bicycle couriers and other road users





The problem of ageing mass housing is becoming one of the key challenges for cities around the world. A nationwide renovation programme is being discussed as a solution in Russia.

We have developed an alternative approach to modernising mass housing based on ESG principles. It will enable the cities to adapt to population growth and global climate change.

<https://esg-renovation.strelka-kb.com/>



ISOCARP
international
expertise

> 10
benefits from implementation
of ESG model

52
ESG approaches
to renovation





Every year, forest fires cause great damage to Russia's economy and environment. Over the last 20 years, the area of wildfires in the country has averaged 8.9 million hectares per year.

During the study, we identified the causes of forest fires, assessed the loss of forest cover, and calculated and visualised CO₂ emissions. We also analysed how fires affect climate change and made recommendations that can help prevent future fires or eliminate them at an early stage.

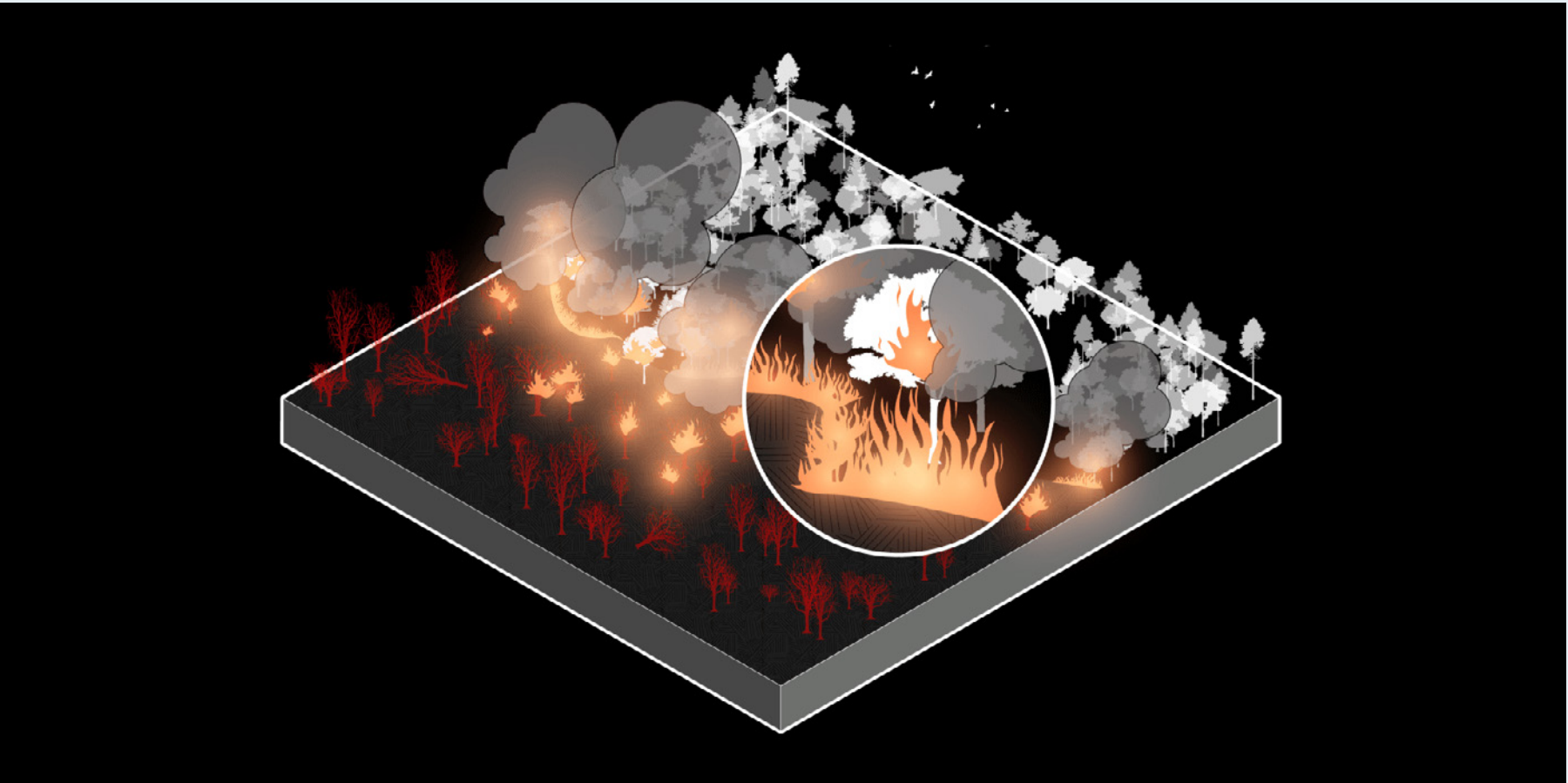
<https://wildfires.strelka-kb.com/>



3 regions
of detailed analysis

> 1,000
analysed satellite
images

11
solutions to the
wildfires problem





In 2021, Moscow joined the international Cities Changing Diabetes study initiated by Novo Nordisk company.

The study aims to identify the main social and cultural factors that influence the incidence of Type 2 diabetes. It helps to better understand the everyday needs of people with diabetes and to develop recommendations for the prevention of diabetes in the most vulnerable populations.

5

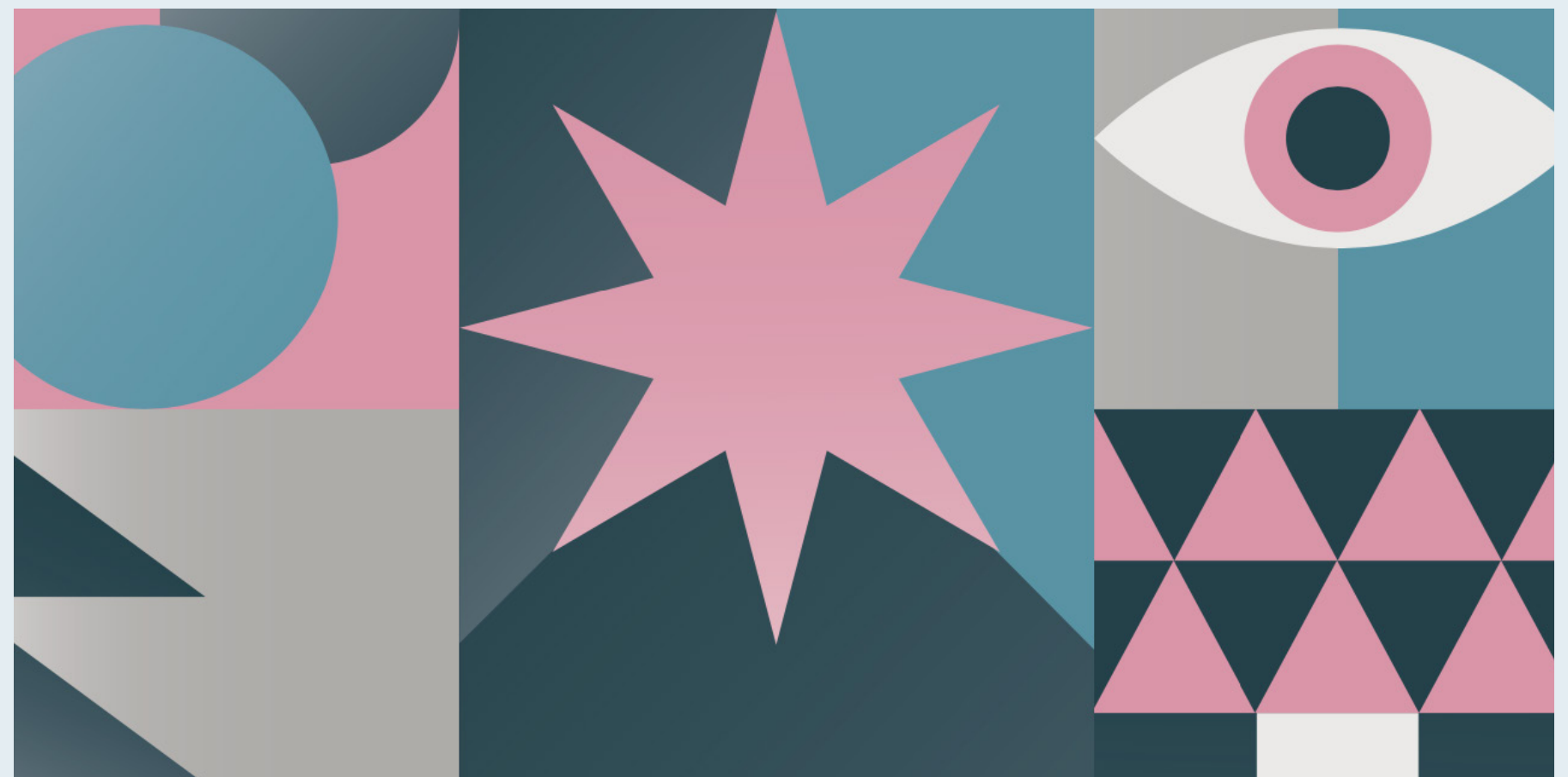
solutions to improve the urban environment

4

main stereotypes about diabetes

7

vulnerability factors



STRELKA KB 

+7 (495) 268-06-11
info@strelka-kb.com

Bersenevsky lane 2 bld. 1,
Moscow, Russia

strelka-kb.com

