


Sustainability Report 2021





Our mission is to create universal access to safe, reliable and affordable energy to empower people, communities and enterprises globally.

We believe that distributed, customer-sited energy storage and renewable generation are essential to economic growth, social equity, and environmental sustainability. SimpliPhi Power focuses on projects and partnerships that align with our mission, bringing together purpose with profit.



Catherine Von Burg
CEO and Founder

“At the core of our company’s business strategy is the founding principle of an integrated bottom line, where success is seen through three equally important dimensions: people, planet, and profit.”

LETTER FROM THE CEO

CATHERINE VON BURG

Mitigating the rapid progression and devastating impact of climate change is the existential threat of the 21st century. Globally, the use of energy by humans represents the largest source of greenhouse gas emissions, with approximately two-thirds of GHGs linked to the burning of fossil fuels for use in generating electricity, heating, transportation, and industry. Since our founding in 2010, SimpliPhi Power has been on a mission to create universal access to safe, reliable, and affordable renewable energy to empower people, communities, and enterprises globally. As a purpose-driven company, we

strive daily to create positive change in the world through our technology, the values we embody, and our actions to give back and serve. At the core of our company’s business strategy is the founding principle of an integrated bottom line, where success is seen through three equally important metrics: people, planet, and profit. These principles guide all of SimpliPhi’s strategic business decisions, from board governance to equitable wages and stock ownership for our employees to the types of partnerships we develop with other stakeholders in the industry.



The focus is always on high-impact projects with a solid social, economic, and environmental bottom line. As of 2020, SimpliPhi has deployed energy storage systems in over 40 countries, optimizing a diverse portfolio of energy generation assets across a broad range of applications and markets. To exponentially scale our operations and increase our impact, we joined forces with Briggs & Stratton in September 2021, a global leader in manufacturing and standby power. From inception, our company set out to leverage energy storage to make an impact on six overriding imperatives that remain critical today:



1. create resilience and security by providing customers access to power 24/7;
2. solve the intermittency of renewables;
3. increase renewable generation in urban and rural, as well as developed and developing countries;
4. reduce reliance on fossil fuel generation and thereby decrease greenhouse gas emissions that drive climate change;
5. deliver power to approximately 900 million economically marginalized people because they do not have access to power; and,
6. create opportunities for sustainable economic development, innovation, and job growth globally.

Distributed Energy Storage Equals Resilience

When we founded in 2010, the intermittency of renewable generation was a strong deterrent to rapid and widespread adoption of renewable energy generation. When the sun set or the wind stopped blowing, people lost power. In 2021, intermittency in the power supply was as much a problem for the electrical grid and its outdated model of top-down, centralized transmission and distribution as it is for renewable generation. As climate change and catastrophic weather events continue to increase in frequency and severity, disrupting and destroying centralized utility infrastructure, millions of people in the U.S. and worldwide will not have access to reliable power for days or even weeks. The human and economic toll of going without power is significant and unsustainable. Local customer-sited energy storage is more critical to creating reliable, uninterrupted power access than ever. Whether energy generated by fossil fuels or renewables is centralized or distributed, people recognize that they need to store power and create their reserves to ensure their lives, businesses, and communities are resilient and secure. This is even more true with the advent of COVID-19. As businesses and schools shut down and send employees and students home to shelter in place, our workforce and student population are more decentralized than ever. Our approach to managing resources, especially energy infrastructure and access, needs to be responsive to these changes in lifestyle and demographics. Economic recovery, human health, and environmental sustainability will depend even more on distributed, customer-sited storage coupled with renewable generation to safeguard against the deleterious impact of power outages and mitigate the rise in GHG emissions.

Climate Data: Disasters & Economic Impact

According to NOAA, from January through the end of September, the U.S. has experienced 18 weather and climate disasters, each incurring losses exceeding \$1 billion. September 2021 is the 5th-warmest September on record. September also brought devastating impacts from four of the 18 disasters. These include flooding from Hurricane Ida, the landfall of Hurricane Nicholas, and ongoing drought and wildfires tormenting communities in the West. By the end of September, wildfires consumed nearly six million acres across the U.S. Total losses due to property and infrastructure damage were \$104.8 billion. Jerome Jean Haegeli, Swiss Re's group chief economist, also said that the impact of the natural disasters experienced in 2021 once again highlights the need for significant investment in strengthening critical infrastructure to mitigate the effects of extreme weather conditions. "Investments in infrastructure support sustainable growth and resilience and need to be upscaled. In the U.S. alone, the infrastructure investment gap between maintaining critical and aging infrastructure is \$500 billion annually until 2040. Public sector partnerships with the insurance industry are critical for strengthening society's resilience to climate risks by investing in and underwriting sustainable infrastructure," he said. The most significant economic impact of climate change is that it could wipe out up to 18% of GDP from the global economy by 2050 if global temperatures rise by 3.2°C, the Swiss Re Institute warns. Today, many people in developing countries are suffering from droughts and windstorms on a scale never seen before, depriving them of daily food and basic needs. Australian think tank IEP predicts that climate-related events could displace at least 1.2 billion people by 2050.

As COVID-19 continues to undermine international business, markets, and supply chains while simultaneously exacerbating economic, social, and racial inequities in developed and developing countries alike, solutions are more urgent. We have made progress in our first 11 years, but there is still much to do. As former UN Secretary-General Ban Ki-Moon said in 2012, access to “energy is the golden thread that connects economic growth, social equity, and environmental sustainability.”

Fossil Fuel Subsidies: Taxpayer Dollars at Work

In a September 2021 working paper, the International Monetary Fund (IMF) estimated that globally, fossil fuel subsidies were \$5.9 trillion in 2020 or about 6.8% of GDP, and on track to rise to 7.4% of GDP in 2025. Just 8% of the 2020 subsidy reflects undercharging for supply costs (explicit subsidies). A whopping 92% of subsidies represented undercharging for environmental fees and foregone consumption taxes (implicit subsidies). Efficient fuel pricing in 2025 would reduce global carbon dioxide emissions 36% below baseline levels, which is in line with keeping global warming to 1.5 degrees, while raising revenues worth



3.8% of global GDP and preventing 0.9 million local air pollution deaths. Accompanying spreadsheets provide detailed results for 191 countries. In 2020, the fall in fossil fuel prices and energy use brought the value of fossil fuel consumption subsidies down to a record low – an estimate of just over \$180 billion is some 40% down from 2019 levels. These are staggering numbers. Governments spend taxpayer dollars to support an industry that is poisoning the air we breathe, the water we drink, and the environment we live in - igniting super fire and storm events displacing people and crippling economies worldwide. Despite these advantageous subsidies, big oil and gas stocks have underperformed in the S&P 500 for a decade – dramatically more so in the past five years. It is now a matter of fiduciary duty to divest from gas and oil companies. That is, if governments, businesses, and fund managers are truly doing their job to protect the returns on their customers’

investment portfolios. Hence, large pension fund managers’ are slowly but steadily divesting from coal, gas, and oil.

Innovation, Growth & Sustainability: Past, Present & Future

When we founded SimpliPhi in 2010, we knew that innovating safe, non-hazardous, and enduring energy storage solutions could be a transformative force in mitigating some of the world’s biggest challenges. Particularly in reducing dependence on fossil fuels, decreasing CO2 and GHG emissions, and empowering people and communities to build resilience with customer-sited reserve power. Today, the six imperatives that inspired the founding of SimpliPhi Power are even more critical as the human and economic toll of catastrophic climate events accelerates and challenges us to act – now – before it is too late.

SimpliPhi is a profitable, revenue-based company that continues to grow because of the efficacy, safety, cost-effectiveness, and scalability of its technology and products and our focus on leveraging energy storage to solve real-world problems. At its core, SimpliPhi believes that companies executing on the integrated bottom line – people, planet, profit – enjoy a healthier return on investment, including start-ups and early-stage companies, while catalyzing change for the better. The acquisition by Briggs & Stratton in September allows us to leverage our 11 years of success.

Partnering with this leader in U.S. manufacturing and standby power enables us to make an even more significant impact on grid modernization, climate change, and social equity. We could not have had as significant an impact without our customers and partners, domestically and abroad, as a company. Therefore, integral to our mission and success is a recognition and call to action that we must do more together. All of us must divest from fossil fuels and continue to invest in better solutions, including the renewable energy industry at large and each other through ongoing collaboration and sustainable, community-focused projects. We look forward to continuing the hard work to change the world for the better by investing in our technology, our people, and our customers to solve some of the world’s most pressing problems while forging new paths to a cleaner and brighter energy future.

By joining the UN Global Compact and formally incorporating the Ten Principles into our company’s strategies, policies, and practices - ranging from human rights, labor, environment, and anti-corruption - we are committed to making an impact with measurable outcomes year-over-year. We believe companies have a tremendous opportunity, if not an outright responsibility, to act and make an impact for the better on people’s lives and the planet. Significantly, data demonstrates that our bottom line is more robust and that we are well-positioned for long-term success when we do. This has proven true for SimpliPhi Power over the past 11 years of sustained growth. I look forward to the future with renewed commitment and innovation.

Sincerely,

Catherine E. Von Burg



CONTENTS

02	Mission	12	Profit
03	Letter from the CEO	13	UN SDGs
07	About SimpliPhi	14	The Ten Principles & Our Commitment
08	Our Values	15	Our Projects
09	Integrated Bottom Line	25	Our Partners
10	People	26	Call to Action
11	Planet		



ABOUT SIMPLIPHI

With a mission to create universal access to safe, reliable and affordable energy, SimpliPhi Power designs and manufactures efficient, non-cobalt-based energy storage and management systems that utilize environmentally benign Lithium Ferro Phosphate (LFP) battery chemistry.

Based in Oxnard, California, SimpliPhi combines the LFP energy storage chemistry with its proprietary cell and battery architecture, power electronics, Battery Management System (BMS), manufacturing processes, and materials. This process creates safe, durable, and highly scalable on-demand power solutions for the residential, commercial, military, and emergency response industries.

We are inspired by PHI, a symbol representing the Golden Ratio. PHI is a mathematical principle used to analyze relationships and proportions between component parts and the whole, both in nature and the mechanical world. When adhered to, these golden ratios achieve remarkable balance, symmetry, and simplicity. Every product we design and manufacture is intended to create balance between people, the power they generate, and the energy they use – in harmony with a vision to achieve a balance between people, planet, and profit. Our company name represents what our technology does for our customers: SimpliPhi Power - your power - to create balance and proportion in your relationship with energy and the natural world.

OUR VALUES

At SimpliPhi Power, we constantly strive to know what matters – to our employees, customers, families, communities, and strategic partners globally – and make a difference. Our products and services empower people, communities, and enterprises to take control of their power, leverage renewable generation, reduce their utility bills, eliminate or optimize generator fuel, and create resilience on or off-grid in the most efficient, user-friendly way possible. Our values are the essential foundation upon which we build our company's products, develop practices and policies, and engage with all stakeholders in the energy industry.



EMPOWER

People. Communities. Yourself. Be the difference.
In thought and action.



COMMIT

Do whatever it takes. Be unrelenting in all your pursuits.
For others. For yourself.



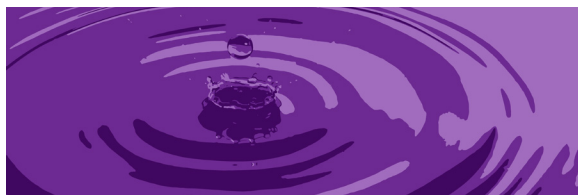
FIERCE

Care. A lot. Be an activist. Make a difference against all odds.
Be compassionate. Find common ground. Stand for humanity.



INNOVATE

At all levels. In everything you do. Imagine beyond the challenge
and defy the status quo.



IMPACT

Make all that you do matter. Be conscious of the why.
For the planet. For people.



TRUTH

Speak up. Be honest. Be bold. Be the voice in the crowd that stands for
justice. Even if you stand alone.



DIVERSITY

Of perspectives and people. Embrace difference. Know its strength.



EQUAL

All people. Unalienable rights beyond gender, race and nationality.
Respect. Dignity. Compassion.



TENACITY

Show your grit. Be scrappy and unyielding.
Find a way -- or create one.



SERVE

Know what matters. Find out their story. It belongs to all of us.
Sales are an extension of the customer's life story.

THE INTEGRATED BOTTOM LINE:



PEOPLE.
PLANET.
PROFIT.

FROM GOVERNANCE TO FRONTLINE WORKERS

Even as a revenue-based early-stage company, SimpliPhi Power set out to execute on an integrated bottom line in which measures of financial, environmental, and social costs and benefits are reflected in our financial statements and governance. With an integrated bottom line, qualitative outcomes have an equal value to quantitative measures of success. In this way, conventional metrics of profitability, efficiency, competitive advantage, and economic growth align with environmental sustainability, social equity, and well-being for all business stakeholders – from our employees to the customers we serve. These principles of sustainable management guide our strategic planning, accounting practices, and overarching objectives, from executive decision-making to manufacturing to supply chain management.

People

Everything we do starts with people. From our global supply chain to our employees to the customers we serve, the ecological, economic, and social well-being of people and their communities is at the heart of our decision-making and is a measure of our success. We have built our company on the promise of safety. This promise is grounded in our commitment not to endanger lives by sourcing or producing volatile and toxic materials such as lead or cobalt. Additionally, we support our greater community in times of crisis and improve the financial security of all our employees, customers, and strategic partners.

Employee Well-Being During Emergencies

In 2020, we shut down for six days in line with local government mandates to ‘shelter in place’ as the threat of COVID-19 spread, paying all our employees at full-rate. By 2021 we covered all expenses and offered leave-time for employees to get tested and vaccinated for COVID to alleviate the financial stress of taking care of themselves and their families.

Additionally, we established new policies and utilized technologies to adopt more remote and work-from-home solutions.

Employees in emergency scenarios, who needed more flexible world schedules, their families, and communities were at the forefront of our decision-making. All employees were retained with ongoing pay and benefits, and employee and community safety must continue to come first to build for long-term success.



Investment in Employees

Our Employee Stock Option Plan is offered to everyone at the company - from executive level to frontline workers in our manufacturing plant.

Our Stock Option Plan embodies the belief that every employee is integral to the value the company has built through the years and that their dedication and hard work should be recognized and rewarded with an ownership stake at all levels and departments of the company. We believe this achieves a more equitable distribution of value, increases employee commitment, and fosters a culture of social responsibility.

Planet

We believe that being good stewards for the planet is critical to our future survival as a species. Sustainable business practices often require decisions and investments in the short term to build long-term value. Quantifying and capturing the return on those investments can take months or years. In the energy industry, the expedience of short-term profits in gas and oil omits the long-term costs of ecological destruction. The “externalities”, from toxic oil spills to GHG emissions, are not factored into calculating “cost” to the market. From supply chain to waste management, we are committed to evaluating and reducing “externalities”, our environmental footprint, and making investments to mitigate our impact.

Employee Commitment to Sustainability

Sustainability and investment with a long-term view is an everyday mindset at SimpliPhi. Our shipping and receiving department has begun identifying alternative pallets made from regenerative materials such as coconut fiber, bamboo, almond shells, and hemp. In-house, we try to adhere to minimizing waste – reduce, reuse, recycle – by donating our used pallets to community residents for re-purposing. We focus on environmentally conscious packaging methods and alternatives to plastic wrap and polyester straps for shipping products.



Emergency Scenario Planning in an Unpredictable World

Scenario planning is a structured approach for companies to identify and forecast critical uncertainties. CEO Catherine Von Burg credits scenario planning for the company’s resilience during the COVID-19 shutdowns. The process “forces you to think about current trends that portend different future scenarios and develop strategic plans to thrive in them,” she says. In late 2019, SimpliPhi conducted scenario planning in which the possibility of a global pandemic became one of the critical uncertainties. To prepare for this seemingly unlikely scenario, SimpliPhi stockpiled materials. The exercise “is not about predicting the future. It’s about testing your overall business strategy in different scenarios,” says SimpliPhi board member Hunter Lovins.

Profit

From its inception, SimpliPhi Power has taken a holistic and long-term view on profit and financial performance. As a growing, revenue-based company, our profits have not come at the expense of people or the planet. Profit has been in service to increasing our social, economic, and environmental impact for the greater good. We continue to outperform not by maximizing the bottom line for shareholders but by the benefits we provide to our stakeholders, from supply chain partners to customers. We focus on profit with a purpose.

Quality Drives Value

When we founded, SimpliPhi Power made a conscious choice not to use the cheapest cobalt-based lithium-ion chemistry available. Cobalt is highly toxic and hazardous, and it causes li-ion batteries to overheat, catch fire, and explode. Furthermore, the cobalt supply chain is riddled with corrupt business practices and heavily relies on child laborers, predominantly in the Democratic Republic of Congo.

Instead, we entered the market in 2010 based on a commitment to safety, quality, and durability. We continue to grow by innovating with li-ion chemistry that eliminates cobalt - not on low price points that leverage a corrupt and hazardous supply chain that fundamentally puts the customer and planet at risk.



Donations and Discounts for Social Impact

Even as an early-stage company, SimpliPhi has been committed to the idea of 'giving back' year-over-year by donating at least 1% of annual revenue toward innovative and impactful community-based projects around the world. Integral to this philanthropic commitment, we also offer substantial discounts to any NGO or non-profit that improves lives with access to clean and reliable energy.

From Puerto Rico, to Peru, to Zimbabwe, our solutions have impacted thousands of people while proving that the long-term view of profit does not need to rely on short-term sacrifices and hidden hazards. The IDEA initiative dedicates 1% of annual revenue to Deliver Energy Access for high-impact projects.

Our Promise for a More Sustainable World

Our mission is to create universal access to safe, reliable, and affordable energy to empower people, communities, and enterprises globally.

We believe that distributed customer-sited renewable energy generation and storage is essential to creating energy security, lifting people out of poverty, and combating climate change. SimpliPhi Power focuses on projects and partnerships aligned with our mission, delivering impact-driven and innovative solutions that foster sustainable development, a healthy planet, and community wellbeing.

“As a responsible corporate steward, SimpliPhi Power firmly believes that we have a pivotal role in advancing the 2030 Sustainable Development Goals (SDGs) by ensuring that our energy storage solutions promote social equity, environmental responsibility, and sustainable economic development. We commit to the UN Global Compact’s Ten Principles on behalf of all our stakeholders.”

- Catherine Von Burg, CEO & President

SUSTAINABLE DEVELOPMENT GOALS



Our Commitment to the Ten Principles of the UN Global Compact



United Nations
Global Compact

Human Rights

Principle 1: Businesses should support and respect the protection of internationally proclaimed human rights; and

Principle 2: make sure that they are not complicit in human rights abuses.

Labor

Principle 3: Businesses should uphold the freedom of association and the effective recognition of the right to collective bargaining;

Principle 4: the elimination of all forms of forced and compulsory labor;

Principle 5: the effective abolition of child labor; and

Principle 6: the elimination of discrimination in respect of employment and occupation.

Environment

Principle 7: Businesses should support a precautionary approach to environmental challenges;

Principle 8: undertake initiatives to promote greater environmental responsibility; and

Principle 9: encourage the development and diffusion of environmentally friendly technologies.

Anti-Corruption

Principle 10: Businesses should work against corruption in all its forms, including extortion and bribery.

SimpliPhi provides energy security and resiliency around the world. The following projects highlight our commitment to the Principles of the UN Global Compact by putting these Principles into action:



HUMAN RIGHTS

Southern Myanmar - COVID-19 Response Center

The Karen community of southern Myanmar has a rich history and cultural heritage and is currently struggling with the impacts of the COVID-19 pandemic and political upheaval in their country.

In 2021, The IDEA partnered with the Border Green Energy Team, Green Empowerment, and Karen Department of Health & Welfare to install a solar-powered energy storage system to provide resilient power for the community's COVID-19 facilities and medical resources. The system includes 5.5 kW of solar PV, a 5 kW GoodWe hybrid inverter/charge controller unit, and 16 SimpliPhi 3.8 kWh Lithium Ferro Phosphate batteries.

With the installation of a resilient and sustainable energy system, they can ensure access to medical care to support the community through the pandemic and for years to come.

The KDHW's COVID-19 Response Center serves people living in nearby areas and the other nine clinics nearby, which provide medical services to nearly 30,000 people in 69 villages in Hpa-An District, Karen (Kayin) State, Myanmar.



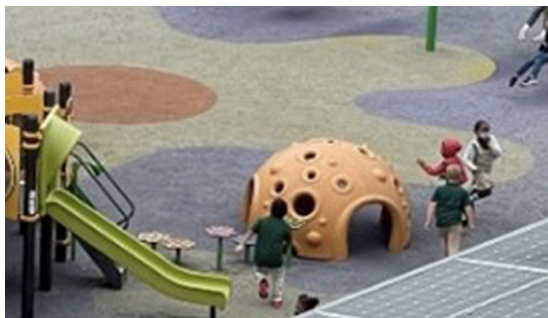


COMMUNITY RESILIENCE

Ludlow-Taylor School, Washington DC - Housing Project

As climate change intensifies, causing an increase in extreme weather events that disrupt reliable access to grid power, studies have shown that under-resourced, low-income communities are the most vulnerable to its negative consequences.

Community Resilience centers are critical to achieving energy equity for under-resourced populations. They are



expected to become more commonplace as communities respond, prepare, and adapt to the new reality of climate change and power outages.

Ludlow-Taylor is a public school and Community Renewable Energy Facility located in an under-resourced community in Washington, D.C. that installed a 200 kW solar array in late 2019 to meet its energy needs and sell an excess of 30 kW back to the utility to reduce operating costs. When the COVID-19 pandemic hit in 2020 and forced the school to shift to remote learning, the excess solar produced amounted to 90 kW – far more than the net metering

agreement with the local utility, Pepco, for export to the grid. It was critical to maximize the investment of the solar array for the school, satisfy the imposed export limit of 30 kW, avoid the system from being shut down and capture valuable excess renewable energy. SimpliPhi Power designed a 60 kW/129 kWh 768 VDC lithium ferro phosphate (LFP) battery bank to store the excess solar generation. Pepco uses extra energy generated and stored in the SimpliPhi battery to provide additional capacity for the low-income community surrounding Ludlow-Taylor as part of Solar for All, a program of D.C.'s DOE. Across the U.S., low-income households face a disproportionately higher energy burden. Energy burden is the percentage of gross household income spent on energy costs. According to the DOE, the national average energy burden for low-income households is 8.6%, three times higher than non-low-income households.



EMERGENCY RESPONSE

Building Back Greener After Hurricane Ida: Footprint Project

SimpliPhi supports emergency response efforts all over the world.

In 2021, hurricane season made headlines when Ida became the second most damaging storm to hit Louisiana, making landfall on the 16th anniversary of Katrina, destroying infrastructure, and cutting off power. As the grid was gradually restored throughout the state, thousands in the hardest-hit areas remained without power for days or weeks. Many have lost everything. Gas shortages in the region left even those with access to generators sweltering in the heat and the dark.

SimpliPhi partnered with Footprint Project, a Minneapolis-based non-profit organization, to deploy trailers outfitted with solar panels and battery storage in response to this disaster. The mobile trailers were deployed at sites throughout Ida's affected areas, including community centers, medical centers, and fire stations. Local first responders identified parking lots and street corners as high-need areas for cell phone charging, medical and mobility devices, and other critical emergency equipment.





LABOR RIGHTS & RESPONSIBLE SOURCING

Understanding Cobalt's Human Cost: Social Consequences of Dirty Energy

How can we talk about clean energy without considering the environmental and human impact of our batteries to store our energy? SimpliPhi actively assesses these impacts at each level of the battery supply chain and devises solutions to minimize harmful consequences, from the extraction of raw materials to its manufacturing processes and materials.

Cobalt mining is associated with child labor, increases in violence, substance abuse, food and water insecurity, and physical and mental health challenges. Waste generated from mining cobalt and other metals can pollute water, air, and soil, leading to decreased crop yields, contaminated food and water, and respiratory and reproductive health issues.

Since its founding in 2010, SimpliPhi has committed to supplying lead and cobalt-free batteries to avoid contributing to the ongoing human rights abuses, toxicity, and environmental degradation associated with these two rare-earth metals. We believe in storing renewable energy in non-toxic batteries that do not put miners or end-users at risk of harmful exposure. The energy storage industry needs to scale sustainably to align with overall clean energy targets and energy security. Resilience will not be achieved with hazardous, toxic batteries.





EQUAL OPPORTUNITY EMPLOYMENT

SimpliPhi Headquarters Oxnard, CA - Labor Practices

People are integral to everything we do, and SimpliPhi is committed to being an equal opportunity employer and exceeding fair labor practices.

In this regard, SimpliPhi provides equal employment opportunities to all applicants and employees without discrimination concerning race (including protective hairstyles and hair texture), religious creed (including religious dress or grooming practices), color, sex, sex stereotype, pregnancy, childbirth or related medical conditions (including breastfeeding), age (40 years or over), sexual orientation, gender, gender identification and expression, transgender status, transitioning employees, physical or mental disability, medical condition (including cancer), genetic characteristics, genetic information, family care, marital status, enrollment in any public assistance program, status as military, a veteran or qualified disabled veteran, status as an unpaid intern or volunteer, ancestry, citizenship, national origin, protected medical leaves, domestic violence victim status, political affiliation, or any other classification protected by law.

We also provide annual anti-harassment training for all staff and our company has quickly taken decisive action in the event of any harassment issues.





RESPONSE TO ENVIRONMENTAL CHALLENGES

New York State Governor's Office of Storm Recovery: Brooklyn Public Library

As a clean energy company, we promote social innovation that will pave the way to a more sustainable environment and lifestyle. We believe in developing innovative solutions that accelerate positive change proactively.

City response to the challenges created by severe weather disasters is critical. With supported vision and funding from the New York State Governor's Office of Storm Recovery (GOSR), the Brooklyn Public Library Coney Island Branch completed a milestone solar + storage project that demonstrates what is possible for densely populated urban areas at risk of power outages and natural disasters. The system consists of 21 kW of roof-mounted solar PV + 19 kWh SimpliPhi AccES energy storage system that meets the NYC limit of 20 kWh.

SimpliPhi's lithium ferrous phosphate-based storage solutions have achieved the industry's highest safety standard with UL 9540 and UL 9540A fire safety test results at the cell, battery module, and large unit level. Deploying solutions that are designed, engineered, and tested for safety and reliability is of the utmost priority if they are to be utilized in disaster-related or otherwise challenging situations.





CONSERVATION & SUSTAINABLE ECO DEVELOPMENT

Zimbabwe, Africa - Akashinga “The Brave Ones” Women Anti-Poaching Unit

The Akashinga rangers are a community-driven conservation model in Zimbabwe’s Lower Zambezi Valley, training and arming disadvantaged women and empowering them to protect endangered wildlife and habitat from poachers.

The Akashinga creates sustainable economic development, aiming to employ 1,000 women rangers by 2025 to protect 20 nature preserves under the organization of the International Anti-Poaching Foundation. SimpliPhi Power continues to provide clean energy for these courageous women and their commitment to bettering the environment and their communities. In partnership with NGO Empowered By Light, SimpliPhi Power provided off-grid renewable energy with battery systems to power the Akashinga training camp and operations center with lights, radios, laptops, fans, and cold storage units.

Since the founding of the Akashinga team, the outcomes have been an increase in the rate of non-violent apprehensions of poachers and the transformational impact on habitat, wildlife, and the women’s lives in their communities. Conservation, to work, must align the interests of human populations, wildlife, and the habitats in which they live.



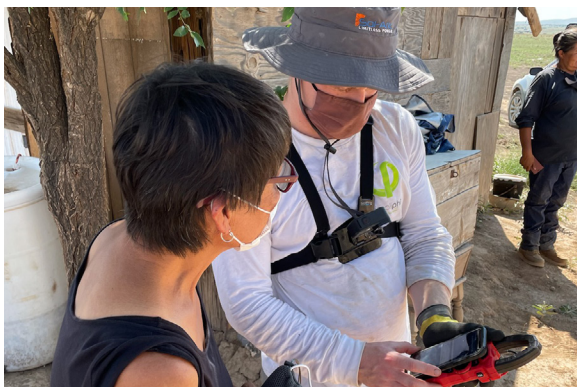


SOCIETAL & ENVIRONMENTAL COMMITMENT

Native Renewables: Replacing Coal-Fired Power Generation

We believe businesses are accountable for driving positive change with a clear beneficial social impact. That is why we partnered with woman-led non-profit Native Renewables (NR) to install their first two off-grid systems for two families within the Navajo Nation Reservation. SimpliPhi Power replaced their inoperable, leaking lead acid batteries with PHI-M 3.8 kWh energy storage systems and helped secure new PV solar energy systems with charge controllers for easy and transparent use to maximize access to clean power generation 24/7/365 days of the year.

The closure of a large coal plant on the Navajo Nation Reservation left residents without jobs and whole communities without vital resources. Through the IDEA campaign and network of partners, SimpliPhi worked with a private donor to raise funds to support the off-grid residential energy systems and general operating expenses to support job training and other services offered by Native Renewables. Native Renewables now has experience designing and installing safe, clean lithium iron phosphate (LFP) battery systems.





EMPOWERING ENVIRONMENTAL INNOVATIONS

Microgrids Act as the Seeds of Change in Sabongari, Cameroon

As a clean energy company, we promote social innovation that empowers communities. Clean and affordable energy is fundamental to economic growth, social equity, and environmental responsibility.

With demand for microgrid technologies surging in rural Africa, SimpliPhi Power began a feasibility study in February of 2021 in conjunction with the U.S. Trade and Development Agency (USTDA), Renewable Energy Innovators Cameroon (REIc), and Power Africa to examine the viability of microgrids for up to 100,000 households.

In Cameroon, electricity is sparse and unreliable outside of major cities. SimpliPhi, in partnership with REIc, will create the framework through feasibility studies that demonstrate microgrids are a viable alternative to generators and other energy sources within the region.

A local group, Grouconser, helped develop a Site Assessment Tool Kit, “KoboCollect” that is being used for data collection for a pilot site in Voundou and 133 additional sites across multiple target regions (Centre, West, Adamawa & North). The hope is that the feasibility study will pave the way for installing an additional 760 microgrids by 2029. SimpliPhi is executing the USTDA grant in collaboration with National Renewable Energy Laboratory (NREL) and Virginia-based Morua Power. The study will include the design and remote monitoring of the pilot project and future projects in aggregate.





The world will not be destroyed by those who do evil,
but by those who watch them without doing anything.

~ Albert Einstein

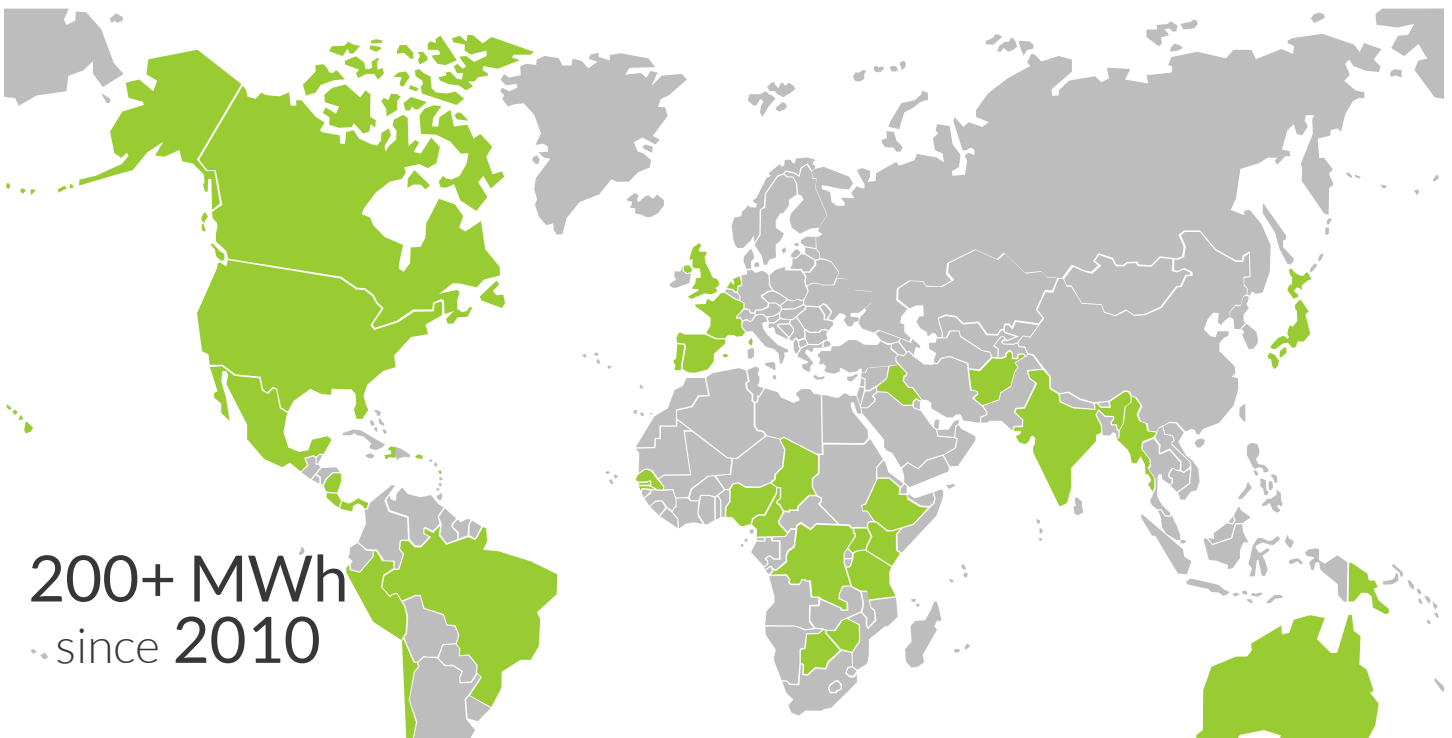
ANTI-CORRUPTION

SimpliPhi's Compliance with Anti-Corruption Laws

SimpliPhi complies with all applicable anti-corruption laws, directives and regulations, such as the U.S. Foreign Corrupt Practices Act and the U.K. Bribery Act. We require that our employees refrain from offering or making any improper payments of money (or anything of value) to government officials, political parties, candidates for public office, or other persons. This applies even in locations where such activity may not violate local law.

Our Partners and Customers

We take bold steps to have a global impact that improves the lives of others and the well-being of our planet. But we cannot do this alone. That is why we partner with organizations and individuals driving change in their communities and around the world. Here is a partial list of those we partner with that have dedicated their time and resources to the values we uphold and represent.





Call To Action

The Business Roundtable, representing leaders of large companies that collectively employ over 19 million people, believes that by working closely with policymakers at all levels of government, we can create American jobs and restore U.S. economic growth and competitiveness by:

- Investing in our nation's infrastructure
- Improving worker training and education
- Modernizing the U.S. immigration system
- Ensuring American companies and workers can grow through exports and trade on a level playing field worldwide
- Making meaningful progress on big issues like climate change and racial equity and justice, including policing reform

No matter what their size or industry, every business holds the power to influence and implement transformative practices that lead to significant change for the people and the planet they serve. The sum of SimpliPhi's integrated business practices as adhered to through the Ten Principles of the UN Global Compact provides an example of what is possible, even as an early-stage, revenue-based company, and adds to the ripple effect of change the world needs.

Companies must recognize the opportunity and responsibility they have to positively impact and contribute to the global shift toward social, economic, and environmental equity.