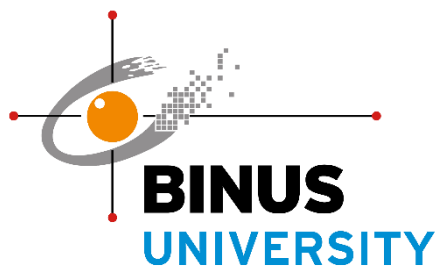


COE BINUS UNIVERSITY

2018-2019



**TEACHFOR
INDONESIA**
POWERED BY BINA NUSANTARA

Table of Contents

Introduction	4
Vission and Mission Teach For Indonesia	4
Education	4
Tutoring.....	4
Scholarship.....	8
Training and Workshop.....	8
Enrichment Program 3+1 Community Development Track	12
Community Service Program “Merajut Nusantara”	12
Community Service Program “Segaran Village”	13
Palmerah PAUD Celebration (National Education Day)	14
Education Support Donation for Border Residents of Papua - PNG	15
Book Collection with Tzu Chi Foundation	15
Foster Parents Program	15
The Spirit of Kartini Day	16
Empowerment and Capacity Building for Persons with Disabilities.....	16
Learning Express Program.....	17
Digital Innovation	18
Well-Being	19
Revolving Fund for Flamboyan Flat Union	19
MSMEs Mentoring with BTPN Bank.....	20
Garage Sale	20
Donation for Lombok Earthquake Victims.....	20
Break Fasting Together	21
Humanitarian Day	22
Environment	22
Biopore Making.....	22
Making a Wash Basin	23
Tree Planting	23
Environmental Care Program for New Students (First Year Program)	23
Large Scale Community Service of the Regional Military Kodam Jaya	24
Environmental Care.....	25

Health	25
Blood Donation	25
Free Circumcision	25

Introduction

For more than 35 years, BINA NUSANTARA GROUP has been well regarded as a knowledge provider contributing services and innovations for stronger Indonesia. BINUS GROUP runs programs from the kindergarten level all the way up to doctoral degrees building global competencies through local insights. It provides knowledge-based services to the community in multiple forms including its social corporate responsibility program TEACH FOR INDONESIA.

Teach For Indonesia (TFI) is a center that has been responsible for managing the social responsibility of BINA NUSANTARA since 2009 as well as functioning as a center for sustainable community development. The TFI program focuses on the learning aspect with the concept of community development which aims to make the community independent and improve the quality of life of the community, especially for the future development of children. There are four program categories that TFI carries out, including: Education, Environmental, Health, and Well-being based on the pillars of Sustainable Development Goals (SDGs). The TFI program is voluntary, sustainable, and transparent as well as it refers to community development. The following are various TFI programs:

Vission and Mission Teach For Indonesia

Vision: To become a center that can trigger volunteers together with Government, Community, and Society in learning and empowerment in order to create a better quality of life for all Indonesian people.

Mision:

- Providing better education services.
- Encouraging communities to have passion for learning.
- Contributing to provide knowledge through better informal education in Indonesia, By synergizing with Government and Community to create a better quality of life.

Education

Tutoring

Education is a measuring tool that must be able to guarantee equal opportunity, improvement and relevance of quality. Equitable opportunities in education are manifested in the 9 years compulsory education program as the main capital to compete in the world of work. Improvement of quality and relevance of quality can be realized by thought heart, mindset, physical exercise, and so on. Quality improvement activities should be carried out from early childhood. Therefore, Bina Nusantara through Teach For Indonesia (TFI) provides guidance and tutoring for children.

The beginning of this tutoring activity was started in 2013 which is starting from a community in Kemanggis area, West Jakarta (around BINUS) with the aim of empowering

and advancing the quality of education in Indonesia. The learning system is mentoring, where 1 teaching volunteer assists 3-5 students. This system is implemented with the hope of creating a comfortable and pleasant tutoring atmosphere for both students and teaching volunteers. The following are description of TFI's tutoring activities:

a. Kemanggisan Tutoring Community

The Kemanggisan tutoring program is the first tutoring program opened by TFI. The tutoring was attended by children around the Kemanggisan Campus. The learning materials consist of Mathematics, English and Art.



Figure 1 Documentation of Kemanggisan Tutoring Activities

b. Dutasia Sitanala Community, Tangerang

Dutasia Sitanala is a tutoring community located in the Tangerang area. The enthusiasm of participants and teaching volunteers are very fantastic where these activities are still running regularly.



Figure 2 Documentation of Dutasia Sitanala Tutoring Activities

c. Dutasia Tanjung Pasir Community

Dutasia Tanjung Pasir is the second tutoring community in the Tangerang area fostered and supported by TFI. Tanjung Pasir is outskirts of Tangerang which has a fairly low level of education. This can be seen from the surrounding community who are more concerned with earning a living than continuing education for their children.



Figure 3 Documentation of Dutasia Tanjung Pasir Tutoring Activities

d. Dutasia Lippo Karawaci Community

The Lippo Karawaci Learning Community is located in Dumpit Karawaci Village. This learning community is the third tutoring community in the Tangerang area where students are from Elementary until Junior High School.



Figure 4 Documentation of Dutasia Lippo Karawaci Tutoring Activities

e. Flamboyan Flat, Cengkareng, West Jakarta

Bina Nusantara, through Teach For Indonesia (TFI) together with Global Peace Foundation (GPF), provides coaching and tutoring for children in Flamboyan flat, Cengkareng, West Jakarta. Coaching and tutoring carried out in the form of character building for the children, English, art and creativity. This activity is carried out once a week for children of the residents of Flamboyan flat.



Figure 5 Documentation of Flamboyan flat Tutoring Activities

f. Bekasi Balarenik Shelter Community

As a form of TFI's commitment to improve the quality of Indonesian education, in 2018 TFI continues to expand the range of tutoring through cooperation with the Balarenik shelter in the Bekasi area. Routine tutoring activities are supported by voluntary students who are providing instruction to children.



Figure 6 Documentation of Balarenik Shelter Tutoring Activities

g. Yon Arhanud 1/1 Kostrad Serpong

Yon Arhanud 1/1 Kostrad Serpong is a tutoring activity that includes learning English and Mathematics for the Elementary School.



Figure 7 Documentation of Yon Arhanud 1/1 Kostrad Serpong Tutoring Activities

h. Jatipulo Sub-district Evening Study Assistance Program

The evening study assistance program is one of the collaborative programs managed by TFI with LMK Jatipulo Sub-district which aims to use their time at 07:00 – 09:00 PM to be used as study hours so that students at this hour do not waste their time by playing on their mobile phones or playing outside the house.



Figure 8 Documentation of Jatipulo Sub-district Evening Study Assistance Program

Scholarship

As a real manifestation of BINUS vision in continuing to foster and empower the community in building and serving the nation, BINUS provides scholarship for high school students / equivalent. Since 2008, this program is a form of BINUS contribution and commitment to help the government in educating the nation's children. It is the duty of BINUS as an educational institution to facilitate people who have potential and want to study but are hampered by economic limitations. The scholarships given are in the form of scholarship for children of permanent lecturers, Bidikmisi scholarship and Duta Binusian scholarship.



Figure 9 Documentation when Submission of Scholarship

Training and Workshop

TFI also has training programs which the goal is for community development.

a. Microsoft Office Training for Kota Bambu Utara Community

BINUS through TFI shows a commitment to improve the quality of life of the community through free computer training for people in Kota Bambu Utara which is expected to increase their knowledges and skills in the field of computers. This training activity is carried out direct practice by using computers in the BINUS Computer Lab so that participants can immediately apply the theory of the materials being taught. At the end of the session participants are given practice questions which aim to see the extent of understanding of the material collected by participants during the training.



Figure 10 Documentation of Ms. Office Training for Kota Bambu Utara Community

b. Microsoft Office Training for Palmerah Community

We realize that the rapid development of technology require public understanding to be able to make good use of it. Therefore, TFI conducts computer training by providing adequate computer equipment, interesting material and reliable lecturers with the aim of improving the skills of the Palmerah community.



Figure 11 Documentation of Ms. Office Training for Palmerah Community

c. Making Bread and Churros Training

TFI committed to help in improving the standard of living and empowering the community by providing useful training for the four target communities and the results can be directly implemented in daily life. Examples of training are making bread and churros. With the training, it is hoped that it can increase the income of housewives.





Figure 12 Documentation of Making Bread and Churros Training

d. Visual Learning and Teaching Workshop

In developing the competencies of school teachers in educating students so that they can be better absorb knowledge, TFI together with KOPERNIK and NHK Education, held a workshop with the theme of visual learning. The workshop was attended by 16 schools and 36 participants. Learning was focused on Science and Mathematics for teachers that presented by professionals from NHK Education Japan. It is hoped that with this workshop, teachers can more easily help students to deepen and ease absorbing their knowledge.



Figure 13 Documentation of "Visual Learning & Teaching Workshop"

e. Numeration Innovation Training in 2013 Curriculum in Sumenep

The purpose of this training is to improve the professional competencies of teachers in order to teach the basics of arithmetic with methods developed specifically through research on number strands. The method specially developed for this number strand contains character education content. In this training, teachers will be trained on how to teach Mathematics in a way that is easy for students to understand and like. The props used are cards specially designed in red and white which will be used in various games during the lesson. The purpose of using red and white is to foster love for the homeland in students. The purpose of using games during learning is to create a pleasant atmosphere in learning in the hope that students will like Mathematics. By liking mathematics, it is hoped that they will master

mathematical competencies more quickly so that their numerical skills can be developed. The approaches used during the training are presentation, demonstration, question exercises, group discussions, and performance. The Numeration Training is conducted for one year for teachers and is divided into 2 batches. The training participants included the principal, teachers, and lecturers of the PGSD STKIP PGRI.



Figure 14 Documentation of Numeration Innovation Training in 2013 Curriculum in Sumenep

f. Micro Small and Medium Enterprises (MSMEs) Training

Activities were held at Anggrek Campus and Alam Sutera Campus. The training was delivered by BINUS lecturers according to their field of competence. The objectives of these trainings include:

1. Businessmen (MSMEs) can increase productivity by increasing skills in production process and by managerial improvement.
2. Businessmen can effectively develop their business to be more advanced without waiting for a longer time to get knowledge about various things such as marketing, promotion and so on.



Figure 15 Documentation of MSMEs Training

Enrichment Program 3+1 Community Development Track

Enrichment Program 3 + 1, which is followed by students with minimum time for 4 months and maximum time for 6 months where students carry out activities with the community according to their discipline of knowledge. The hope of this program is that students have real social experiences with the community so that students are good in hard skills and soft skills and the society or community are also helped by student internships. This is in accordance with the 5th BINUS mission, which reads to contribute by improving the quality of life of the Indonesian people and the global community (Improving the quality of life of Indonesians and international community). The 3 + 1 Enrichment Program is not only run in Jakarta area, but also in several big cities, such as Sumba, Bogor, Jepara, Bandung, Bali, and Magelang with partners from government and non-government institution.



Figure 16 Documentation of Enrichment Program 3+1

Community Service Program “Merajut Nusantara”

Internship is a program to invite students to implement the knowledge gained in college to the society / community. This social action is attached in internship study called “Merajut Nusantara”, where in this activity it involves a joint committee across private universities under the auspices of Kopertis Region III which was held in East Belitung on 19 February - 4 March 2018. As for the target locations for the activities, namely Baru Village, Senyubuk Village and Limau Island. Four major programs have been designed and implemented in the community, namely Education, Creative Industries, Health and Tourism.



Figure 17 Documentiom of Internship “Merajut Nusantara”

Community Service Progam “Segaran Village”

Through the internship program, students will go directly to the community to carry out community development with Teach For Indonesia and partners to help the surrounding community. The internship program will be held for 6 to 12 months and is open to various majors at Bina Nusantara University. One of the main internships of BINUS is internship “Citarum Harum” which aims to develop the potential of the creative industry and tourism in the village of Segaran. Activities carried out are the creation and development of the website visitsegaran.com. On the website there are information and updates on various tourist locations, agricultural products, typical products, and various interesting activities in the village that can increase the exposure of the creative industry and tourism from Segaran Village.





Figure 18 Documentation of Internship “Citarum Harum”– Segaran Village

Palmerah PAUD Celebration (National Education Day)

The Palmerah early childhood education programs (PAUD) celebration is an activity in commemoration of National Education Day in collaboration with Himpaudi Palmerah District by holding competitions intended for increasing the creativity of early childhood. The competition was attended by all PAUD in the Palmerah District with total 650 students. In this competition, there are several categories of competitions, including a ball moving competition, a flag moving competition and a word composition competition. As long as the children participate in the competition, parents take part in the "Parenting Seminar" with the aim parents being able to care for and educate their children in the right and proper way.



Figure 19 Documentation of Palmerah PAUD Celebration, National Education Day

Education Support Donation for Border Residents of Papua - PNG

Yonif Para Raider 328 as the duty bearer guarding the border of Republic of Indonesia and Papua New Guinea which carries out security activities is also in charge of carrying out development in the field of education. Teach For Indonesia also supports the implementation of this duty by sending donation in the form of educational support equipment in the form of writing books, stationery, and educational toys. With this donation, it is hoped that it can increase the enthusiasm for learning for younger siblings in the Papua border area.



Figure 20 Documentation of Donation Delivery to Papua

Book Collection with Tzu Chi Foundation

In fulfilling the need for reading books in isolated rural areas, TFI in collaboration with the Buddhist Tzu Chi Foundation collaborate in the field of book collection. The total books collected were 2,319 books.



Figure 21 Documentation of Books Handover

Foster Parents Program

The foster parents program is a real manifestation of BINUS (TFI) to help in educating the nation's future generations. TFI has a Foster Parents program because there are still many school age children who drop out of school due to economic factors where parents can not support their children to study at school. The main requirement for recipients of foster parent

funds is that they come from pre prosperous families and donation will be provided until they finish their school.



Figure 22 Documentation of Giving Foster Parents Funds

The Spirit of Kartini Day

The theme of the spirit of Kartini Day is “With the spirit of Kartini Day, creating togetherness, creativity, intelligence and dexterity for PAUD students in Palmerah sub-district” The activities of the spirit of Kartini Day consisted of a flag moving competition, a ball moving competition, a word composition competition and a reading competition for the holy Al-Quran.



Figure 1 Documentation of the Sprit of Kartini Day

Empowerment and Capacity Building for Persons with Disabilities

TFI in collaboration with Thisable Enterprise held "Empowerment and Capacity Building for Persons with Disabilities". This event was a series of seminars and sharing sessions conducted for two days. The first day invite persons with disabilities as participants and presents social activities that are concerned about disabilities and persons with disabilities who are undergoing education in public lectures and side by side with the society. The second day was a sharing session by the Major Office of Person with Disabilities from Chicago, Jerod Lockhart. The resource person told how society and universities should provide access and equality to people with disabilities.



Figure 2 Documentation of Empowerment and Capacity Building for Persons with Disabilities

Learning Express Program

Learning Express Program (LEX) is a collaboration program between BINUS (TFI) and Singapore Polytechnic University. In this program, BINUS University students in collaboration with Singapore Polytechnic University students, accompanied by faculty members and staff work together on social projects in Pesakih flat. Social projects consist of Waste Management, Community Engagement and Community Farming.



Figure 3 Documentation of LEX Program Activities

Digital Innovation

The development of video and audio technology is more increasing; this technology can be used in making digital content as a media in the teaching learning process. Every content that is digital is considered more interesting and easy to understand than content that is loaded on paper and full of writing. The purpose of making digital content for students is to help in

educating the public to care more about education, environment, well-being and health of the surrounding society.

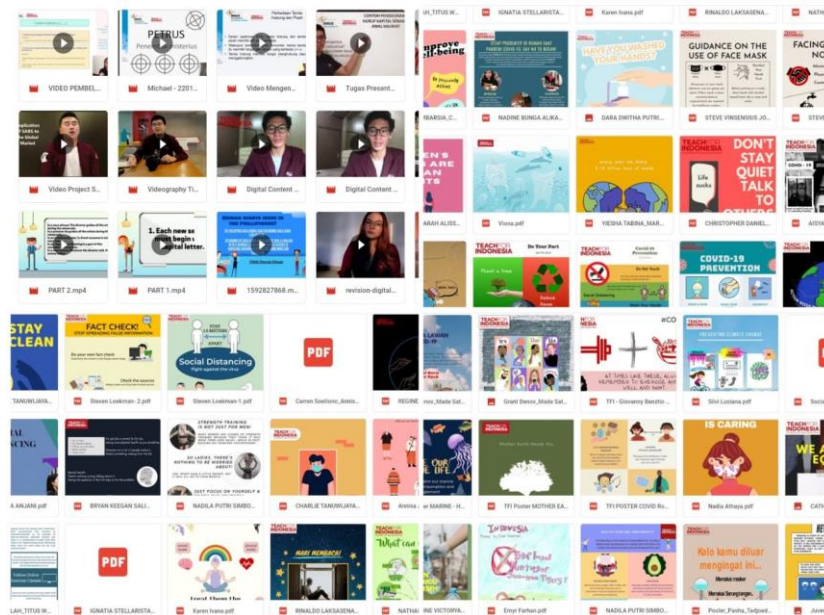


Figure 26 Example of Digital Innovation

Well-Being

Revolving Fund for Flamboyant Flat Union

Residents of the Flamboyant flat are people who are affected by relocation and people who previously had no place to live. Many householder who live in the Flamboyant flat do not work, so many of them only housewives but now they sell cakes, ice cream, ginger drinks, organic vegetables, and others. TFI, which has a revolving fund program, helps the Flamboyant flat by providing cash fund so that KSU KFMS can operate and serve all residents. The purpose of providing a revolving fund is:

- Assist in providing fund for the KSU KFMS so that union can run;
- Improve standard of living of the Flamboyant flat residents;
- Provide sustainable community development program.



Figure 27 Documentation of Revolving Fund with Flamboyant Flat Representative

MSMEs Mentoring with BTPN Bank

It is a MSMEs mentoring activity where students before providing mentoring to MSMEs receive training or debriefing first. The target of this program is to provide solutions for assisted MSMEs, making simple financial reports and increasing the capacity of MSMEs.



Figure 28 Documentation of MSMEs Mentoring Program

Garage Sale

Garage Sale is an activity of selling cheap groceries for pre prosperous society. Results from the sale of groceries are used for community development.



Figure 29 Documentation of Garage Sale Activities

Donation for Lombok Earthquake Victims

Hundreds of people passed away due to the earthquake in Lombok, hundreds of injuries and trauma hit their lives, thousands of houses were destroyed by the earthquake. The society is confused with the existing conditions, a helping hand is needed from all Indonesian people to help the suffering of Lombok people. BINUS through TFI, was moved to help the suffering

victims in Lombok by raising funds and donation to help and alleviate the suffering of Lombok people. The total amount of donation items collected for being delivered to Lombok was 389 kg.



Figure 30 Documentation of Donation for Lombok Victims

Break Fasting Together

Every year BINUS regularly holds break fasting with the society around the campus, orphanage foundations and community accompanied by the distribution of groceries. Break fasting together always held at the Anggrek Campus, Alam Sutera Campus and in the community. TFI regularly collaborates with Puan Amal Hayati Foundation in organizing break fasting for the community.



Figure 31 Documentation of Break Fasting Together

Humanitarian Day

Humanitarian Day aims to increase BINUSIAN awareness and concern for social issues that exist and develop in the community, as well as increase the interest of BINUSIAN to have a career in the NGO field. Activities were held at the BINUS University Anggrek Campus. Humanitarian Day activities consist of NGO exhibitions, awarding scholarships, competitions and MSMEs bazaars.



Figure 4 Documentation of Humanitarian Festival

Environment

Biopore Making

Making of biopore is one of student social activity that has been carried out since 2014. The location criteria for making of biopore are schools, city parks, city forests, empty land or public places that have received permission from local government or local officials. Until 2018, 6,565 biopore had been made which was involving 4,000 students.



Figure 33 Documentation of Biopore Activity

Making a Wash Basin

This program is a form of BINUS (TFI) concern for the surrounding environment. The making a wash basin is carried out in areas that do not have proper hygiene facilities. The location for making a wash basin is in Jakarta and Tangerang areas.



Figure 34 Documentation of Making a Wash Basin

Tree Planting

Due to the lack of green land in Jakarta, since 2017 TFI had a tree planting or reforestation program with the goals is that the existing vacant soil is green and fertile again. Until 2018, 4,995 trees had been planted which was involving 1,490 students.



Figure 35 Documentation of Tree Planting

Environmental Care Program for New Students (First Year Program)

The First Year Program (FYP) is a mandatory program for BINUSIANS who have just joined the big family of BINUS University. This program starts with General Orientation from July to September with many activities that must be followed. One of which is a social

activity named ‘BINUSIANS Peduli’. As we all know the environmental conditions in the world, especially Indonesia, have undergone many changes on the negative side, such as global warming. Therefore, BINUS University through its First Year Program (FYP) with Teach for Indonesia (TFI) teaches the next generation of BINUSIANS to care about the environment. One of the activities carried out is planting trees at the Alam Sutera campus; this activity is to help reduce global warming.



Figure 36 Documentation of Environmental Care Program

Large Scale Community Service of the Regional Military Kodam Jaya

This activity was carried out in order to commemorate the community service of Indonesian National Army (TNI) with the society to execute environmental clean-up actions around the Sentiong market in Balaraja Tangerang area. This activity was held on July 24, 2018 in Sentiong market Balaraja, Kp. Paku Aji, Tobat Village, Kec. Balaraja, Tangerang by Kodam Jaya together with the district Muspida, elements of the TNI / Polri, community organizations and students.



Figure 37 Documentation of Large Scale Community Service

Environmental Care

Conditions at the time of seasonal changes are very influential on daily human life, especially in the transition season like now. The transition season is between the dry season to the rainy season and vice versa. If someone is in an unhealthy condition, it will be very easy to develop illnesses. Therefore TFI invites the students of SMK 1 Barunawati to do gymnastics in the morning and clean the environment in order to maintain a healthy body. In addition, getting used to always washing your hands makes the body avoid germs. The cleanliness of the environment and health of the body will cause the mind to become clear so that the spirit of learning can be maintained.



Figure 38 Documentation of Environmental Care

Health

Blood Donation

TFI cooperates with PT. Alam Sutera Realty, Tbk & Alam Sutera Residence Community (ASRC) organizes a blood donation program regularly every three months at Mall @ Alam Sutera. Blood donations are also conducted at the BINUS @ Alam Sutera Campus and the BINUS @ Kemanggisian Campus.



Figure 39 Documentation of Blood Donation

Free Circumcision

Free circumcision event on October 12, 2019, is an annual social event held by TFI, this event aims to further enhance awareness and good relations between BINUS and surrounding communities. For this year the theme of the social event is “building a clean and healthy generation



Figure 40 Documentation of Free Circumcision