



ROHM Group Corporate Profile

2019 / 2020

Company Mission

The ROHM Group has communicated the Company Mission to its employees since its establishment in order to become a company that can be trusted and relied upon by society.

Quality is our top priority at all times.

Our objective is to contribute to the advancement and progress of our culture through a consistent supply, under all circumstances, of high quality products in large volumes to the global market.



President's Policy

共夢共働
共感共働
共成共働

I was appointed president of the company in 2018, and have formulated a president's policy ahead of the new accounting period, with the following sentiment: "Each ROHM Group employee should have goals that are achieved through courage and enthusiasm, to help the company succeed and contribute to society." Going forward, we will conduct business based on the President's Policy and Our Vision, as the basis of our Company Mission and Basic Management Policy.

共夢共働

Work together towards a common dream

Please dream. Each Employee is encouraged to dream. Everyone must work together to support and challenge one another to achieve these dreams.

共感共働

Work together harmoniously

We must all work together. Not only should we be self-motivated, but we should all work together in cooperation and with compassion for others.

共成共働

Work together to achieve common growth

As we work together with the same values and objectives, individual success will lead to company growth.

Our Vision



We should always work from the perspective of our customers and continuously create new value.

President: Tadanobu Fujiwara

We will always motivate employees for their greater performance.

Based on our company policies (Company Mission, Basic Management Policy), we should encourage employees to be diversified and create a corporate culture that can contribute to society through work.

Increase ROHM's presence in the market with analog / power products

We should continue to develop valued products for global automotive / industrial markets that meets customer demands which contribute to the resolution of social issues and increase the market shares with analog / power products.

Secure stable profit with new products

The sales divisions, Application engineering divisions and Product development divisions should work together to provide the value to our customers, releasing new and best-seller products in the market, and securing stable profit.

With our strong commitment to manufacturing, quality is top priority at all times

We should maintain a disciplined work environment throughout the company where safety is paramount, follow defined rules, and focus on quality as top priority

Our aim is to be always trusted and acknowledged by society

As a good corporate citizen, we will follow social rules and standards, and will remain a fair and faithful company to our stakeholders.

Quality

ROHM strives for "Quality First" as our Company Mission. Quality is incorporated into every process of our vertically integrated production system, from ingot pulling to finished products, to achieve the industry's best manufacturing facilities.

High Quality

In pursuit of "Quality First," we are engaged in activities to enhance quality in all processes throughout the entire Group, from development and production to marketing and services.

Stable Supply

We deliver a long-term, stable supply to enable worry-free use of our products, through utilizing an integrated production system that is less susceptible to external factors.

Vertically Integrated Production System

Raw Materials

Wafer production from silicon ingot pulling



Raw silicon

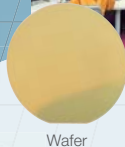


Silicon Ingot

Si
Silicon



CAD



Wafer

SiC
Silicon Carbide



SiCrystal

SiCrystal
A ROHM Group Company

SiC Single-Crystal Wafer Manufacturer

SiCrystal, a German SiC single-crystal wafer manufacturer, became a member of the ROHM Group in 2009

In-House Photo Mask

Pursuing high quality through integrated quality control, from IC chip design layout through to photomask production

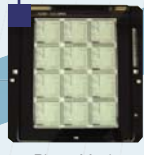
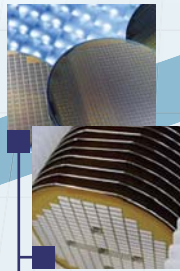


Photo Mask



Wafer Process

Wafer Process

Developing innovative devices from the wafer process, based around our production facilities in Japan

In-House Dies and Lead Frames

To ensure the highest levels of quality, all lead frames and dies for lead frame punching and molding are developed and produced in-house



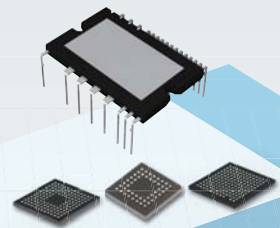
Frame



Die / Mold



Assembly Line



Packaging



Module

Cutting-Edge Packages

Our overseas production facilities leverage the latest assembly technologies to deliver unmatched quality, including SiP, CSP, QFN, and BGA

In-House Production System

All production equipment is developed in-house, making it possible to flexibly and precisely meet customer needs.

All production equipment developed in-house ▶



Technology

The ROHM Group offers a wide variety of products, ranging from ICs and discrete devices to modules and passive components that contribute to solving social issues related to energy conservation, safety, and security.



Power Management / Power Supply ICs



PMICs
(System Power Management ICs)



High-Voltage DC/DC Converters

Driver ICs



High-Voltage Fan Motor Drivers



Isolated Gate Drivers

General-Purpose ICs



Memory, Operational Amplifiers, Comparators and Voltage Detectors (Reset ICs)

SiC (Silicon Carbide) Power Devices



SiC Schottky Barrier Diodes



SiC MOSFETs



Full SiC Power Modules

Transistors



Small-Signal Transistors



MOSFETs



IGBTs

Diodes



TVS Diodes



Schottky Barrier Diodes



Fast Recovery Diodes

LEDs / Laser Diodes

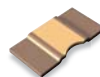


Compact Chip LEDs



Multi-Beam Lasers

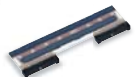
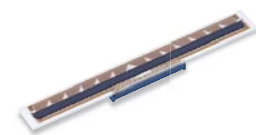
Resistors



High-Power Shunt Resistors



Thermal Printheads



Wireless Communication Devices



Sub-GHz Wireless Communication ICs



Wi-SUN Modules

Sensor Devices



Accelerometers



ROHM Sensor Medal



Kionix[®]

Microcontrollers



16-bit Low-Power Microcontrollers



ROHM GROUP
LAPIS
SEMICONDUCTOR





Focus Areas

We intend to accelerate technological development focusing on three product areas: power, analog, and standard products.

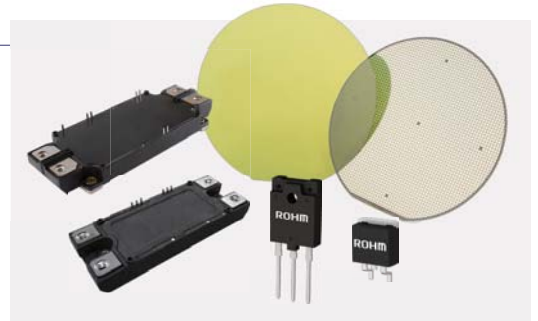
Power

In addition to power devices utilizing industry-leading SiC technology, our lineup includes control ICs, power diodes, shunt resistors, and other peripheral devices that maximize device performance.

SiC Power Device Usage Examples

<p>Chargers for Electric Vehicles</p> 	<p>Power Conditioners for Solar and Wind Power</p> 	<p>Main EV Inverters</p> 	<p>Large Industrial Motors</p> 
---	---	--	--

Power Supplies for Data Centers



ROHM's industry-leading SiC Power Devices are increasingly used across a variety of applications.

Analog

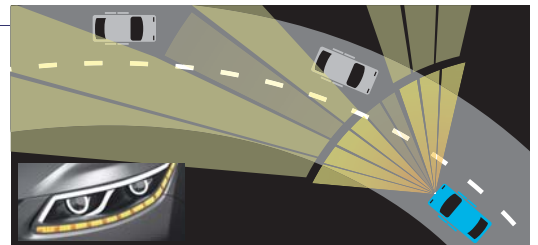
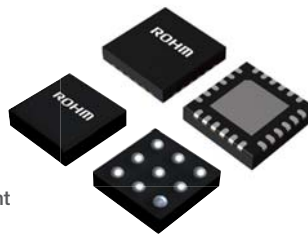
ROHM produces some of the world's best analog ICs by combining three core analog technologies covering circuit configuration, layout, and processes. These make it possible to dramatically reduce both energy consumption and size in automotive and industrial applications.

ROHM's revolutionary **Nano Series** of power supplies combine the latest proprietary analog technologies

- ICs equipped with "Nano Pulse Control™" ultra-high-speed control technology**

Extremely narrow pulse widths enable stable control, contribute to greater miniaturization in cars and industrial equipment, and allow users to achieve simpler systems.
- ICs equipped with "Nano Energy™" ultra-low current consumption technology**

Reducing the power consumption of the IC itself allows for longer operating times in devices equipped with compact batteries.



LED Driver ICs (supports ADB*)

Detects oncoming vehicles within the beam range and automatically adjusts the beam pattern using light distribution control when driving with high beams. This contributes to increased driver safety by selectively blocking light, preventing it from shining onto preceding or oncoming cars.

*ADB (Adaptive Driving Beam): Headlamp capable of variable light distribution

Standard Products

As the world's top supplier of small-signal transistors and diodes, ROHM offers high-quality products backed by extensive experience and technology. We continue to improve our production capabilities through capital investment, to ensure stable long-term supply in the automobile and industrial equipment markets where high reliability is required.

Wafer Process	Assembly Process		
Shiga	Thailand	Malaysia	The Philippines
September 2016 operations	May 2016 operations	April 2017 operations	June 2019 operations
			
Improving equipment	Adding new buildings	Adding new buildings	Adding new buildings

We continue to improve operations through active investment.

To quickly deliver products and solutions that meet the needs of customers in different regions, the ROHM Group has established Technical Centers in various locations throughout the world that offer technical support.

- Kyoto
- Yokohama
- Santa Clara
- Dusseldorf
- Beijing
- Shanghai
- Shenzhen
- Taipei
- Seoul
- Bangalore



Together with the sustainable growth of society

CSR/CSV

The ROHM Group contributes to the continued growth of the Group and healthy development of society by conducting business activities in accordance with the goals and policies outlined in our Company Mission and Basic Management Policy.



CSR and CSV compromise the core of our business activities

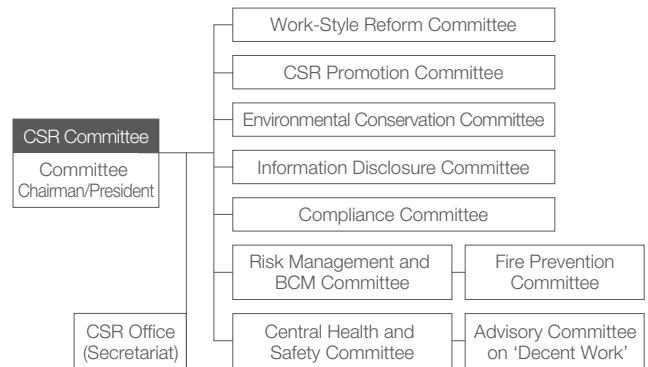
The ROHM Group's Company Mission and Basic Management Policy are based on a strong desire to enrich society through business. These provide the foundation for CSV initiatives that solve social issues through CSR in line with social requirements and international norms while allowing us to meet the expectations of our shareholders.



System for Promoting CSR/CSV

The ROHM Group has formed a CSR committee consisting of all board members as well as directors with the equivalent authority, in order to take responsibility for factors that are crucial to business, such as the environment, society, and governance. Furthermore, the company's seven subsidiary committees specify important issues in each field and tackle the issues flagged using the PDCA cycle method. The committees then assess the suitability of those issues through management system certifications, while simultaneously working on improving accuracy of engagement.

Promotional Organization at ROHM Headquarters



CSR/CSV Initiatives

The ROHM Group aims for continuous growth of both the company and society. For that reason, it is important to create shared value (CSV) between society and businesses by tackling the SDGs through business activities. The ROHM Group has engaged in dialog with various stakeholders, and has decided on six key CSR issues to engage in. These key issues serve as a central focus when engaging in CSR/CSV, and contribute to realizing a sustainable society.



<https://csr.rohm.com>

*ROHM Group CSR information can be found on our website. The information provided online features a wider variety of information than this pamphlet and includes the latest updates.



The ROHM Group's CSR Priority Issues



CSR Priority Issue	Related SDGs
Resolve social issues through innovative products and technology	3 (GOOD HEALTH AND WELL-BEING), 7 (AFFORDABLE AND CLEAN ENERGY), 12 (RESPONSIBLE CONSUMPTION AND PRODUCTION), 17 (PARTNERSHIPS FOR GOALS)
Ensure a stable supply of high-quality products	8 (DECENT WORK AND ECONOMIC GROWTH), 9 (INDUSTRIAL INNOVATION AND INFRASTRUCTURE), 12 (RESPONSIBLE CONSUMPTION AND PRODUCTION)
Develop a global workforce that can contribute to the international community	5 (GENDER EQUALITY), 8 (DECENT WORK AND ECONOMIC GROWTH), 10 (REDUCED INEQUALITIES)
Give due consideration to labor practices and respect human rights in the value chain	5 (GENDER EQUALITY), 10 (REDUCED INEQUALITIES), 16 (PEACE, JUSTICE AND STRONG INSTITUTIONS), 17 (PARTNERSHIPS FOR GOALS)
Carry out business activities that respect the global environment	6 (CLEAN WATER AND SANITATION), 7 (AFFORDABLE AND CLEAN ENERGY), 13 (CLIMATE ACTION)
Contribute to local communities through business activities	4 (QUALITY EDUCATION), 11 (SUSTAINABLE CITIES AND COMMUNITIES), 17 (PARTNERSHIPS FOR GOALS)



www.rohm.com

Corporate Data

Registered Name	ROHM Co., Ltd.
Address (HQ)	21 Saiin Mizosaki-cho, Ukyo-ku, Kyoto 615-8585 Japan Tel: +81-75-311-2121 Fax: +81-75-315-0172
Establishment	September 17, 1958
Paid-in Capital	¥86,969 million as of March 31, 2019
President	Tadanobu Fujiwara
Net Sales	Consolidated ¥398,989 million year ended March 31, 2019
Number of Employees	Consolidated 22,899 as of March 31, 2019

