

NORD ARCHITECTS COPENHAGEN

UN Global Compact
COP 2019





NORD ARCHITECTS

COPENHAGEN

NORD Architects A/S
Copenhagen
Hejrevej 37, 2
2400 Copenhagen NV

Johannes Molander Pedersen

Partner
johannes@nordarchitects.dk
+45 26 17 69 65

Mia Baarup Tofte

Partner
mia@nordarchitects.dk
+45 27 26 74 45

Morten Rask Gregersen

Partner
morten@nordarchitects.dk
+45 26 71 73 05





WE LIVE HERE





WE WORK HERE

WE SUPPORT THE UN GLOBAL COMPACT INITIATIVE AND THE TEN PRINCIPLES

20.12.2019 Copenhagen

NORD Architects is a Copenhagen based office, that has been working with architecture, urban development, process and advisory since foundation in 2003. We have always been engaged in fields that has involved social and healthy progression and development in a way that has increased life quality in general and in specific areas and projects of either health care or human living environments.

Supporting the UN Global Compact is completely in line with our core business and values, and our professional approach towards clients in the building sector. We develop remarkable building that are healthy and support people in social interactions that promote vibrant environments. We prioritize dialogue with our clients and collaborator and invite to participation in co-creation processes which improve possibilities of innovation and higher quality in content before design.

NORD Architects became a member of UN Global Compact 2019 and support the initiative and ten principles fully. This Annual Sustainability Report, the COP, reaffirms our support and describes our actions to continually improve the integration of the Ten Principles in the areas of human rights, employee rights and the protection of the natural environment and actively opposing corruption in all its forms.

We look forward to an exciting 2020 year with our clients and collaborators with continued focus our efforts on delivering leading sustainable solutions both in terms of social and technical matters.

Morten Gregersen
Partner & Architect AA Dipl RIBA II



HUMAN RIGHTS

Principle 1: Businesses should support and respect the protection of internationally proclaimed human rights; and

Principle 2: make sure that they are not complicit in human rights abuses.

LABOUR

Principle 3: Businesses should uphold the freedom of association and the effective recognition of the right to collective bargaining;

Principle 4: the elimination of all forms of forced and compulsory labour;

Principle 5: the effective abolition of child labour; and

Principle 6: the elimination of discrimination in respect of employment and occupation.

ENVIRONMENT

Principle 7: Businesses should support a precautionary approach to environmental challenges;

Principle 8: undertake initiatives to promote greater environmental responsibility; and

Principle 9: encourage the development and diffusion of environmentally friendly technologies.

ANTI-CORRUPTION

Principle 10: Businesses should work against corruption in all its forms, including extortion and bribery.

DESIGN WITH EMPATHY

We create healthy and remarkable buildings that promote social sustainability.

NORD Architects create buildings, urban spaces and developments, and take part in developing healthy and coherent communities with respect for diversity and people's life situation.

In recent years, we have designed and innovated educational and welfare related projects in the healthcare sector, day-care centres, sports facilities and urban spaces - and have experienced a growing international interest in the company's unique approach to developing projects – as regards to strategic innovation as well as pragmatic and remarkable design. We are often asked to lecture and take part in conferences, public debates, exhibitions and publications on several occasions.

Our agenda strives at developing healthy buildings regardless scale or function and to enhance the experience of balance between senses and knowledge. We are deeply engaged in sustainability, co-existence concepts, new learning environments and landscapes plus activities with social potentials that brings people together in new inspiring communities of diversity.

We are recognized for managing a dialogue-based user-involvement-process professionally and have a long termed experience and engaged approach to co-creation. NORD Architects advise in all project phases from building programs, initial design, design management and detailed design.

The fields we work in are planning, landscape design, architecture and client advisory. It all involves a deep understanding of essential issues of design, strategy and experience which results in a balance of integrity and empathy.

Our office is situated in Copenhagen, a city that has been developed to be a green and healthy city and is now an international icon for livable cities. We have participated in this development. Our practice is rooted in new Scandinavian architecture – and as a result we see architecture as an important social component, that helps to create welfare.

NORD's built projects are characterized by high quality design with a Nordic expression and understanding of scale and materials. The architecture is rooted in a deep understanding of the users' needs, and then translated into spaces and spatial relations. Our method can be used in all building typologies, and we carry the knowledge across different projects.



OUR MISSION IS TO

create

sustainability and co-creation within building and landscape design, urban planning, programming, client consultancy

in the fields of

health care, education, living, sports, culture and urban areas.

We strive to

implement the 17 sustainable development goals in every action we take and in every project we onboard.

We are

a team of 30 employees spread on architects, urbanists, interior designers, creative thinkers, landscape architects, building technicians, communicators

and have an international reach

through exhibitions, lectures, publications, judge deeds, panel discussions and debates and our design.

NORD Architects was founded

2003 in Copenhagen.

MAKE GLOBAL GOALS A LOCAL BUSINESS



1 NO
POVERTY



2 ZERO
HUNGER



3 GOOD HEALTH
AND WELL-BEING



4 QUALITY
EDUCATION



5 GENDER
EQUALITY



6 CLEAN WATER
AND SANITATION



7 AFFORDABLE AND
CLEAN ENERGY



8 DECENT WORK AND
ECONOMIC GROWTH



9 INDUSTRY, INNOVATION
AND INFRASTRUCTURE



10 REDUCED
INEQUALITIES



11 SUSTAINABLE CITIES
AND COMMUNITIES



12 RESPONSIBLE
CONSUMPTION
AND PRODUCTION



13 CLIMATE
ACTION



14 LIFE
BELOW WATER



15 LIFE
ON LAND



16 PEACE, JUSTICE
AND STRONG
INSTITUTIONS



17 PARTNERSHIPS
FOR THE GOALS



HEALTHY ENVIRONMENTS INVOLVE INNOVATION

We think of content before we create solutions, and make way for user-involvement and innovation.

NORD Architects is renowned for our approach to developing projects at an early stage, where the assignment or scope of the building is still open for improvements or knowledge input. We formulate the basis for the project in close collaboration with the client and the projects' complexity is solved with an understanding for the social or commercial dynamic that defines the project for the client.

Co-creation is an accommodating process, that NORD has practised and prioritized for almost every project because of its opportunities to improve the basis, program and solutions of the final building schemes.

We have developed an extensive knowledge on co-creation for a targeted and process based on our refined methodology and connected tools for this. It involves the end-users, the clients, experts or stakeholders that possess a valuable knowledge of e.g. workflows, regulations, behaviours, patient's experiences and needs, procedures and preferences in the daily logistical patterns. This approach is part of our DNA and collaborative attitude towards often large-scale buildings or complex projects that involve many stakeholders, public institutions and different advisors.

Co-existence

We believe designing for co-existence is one of the biggest challenges of our time. Co-existence could make way for radical changes in sustainability and ways people live together, health and health care in both treatment and prevention, sustainability, infrastructure, life quality, social interactions and climate impact.

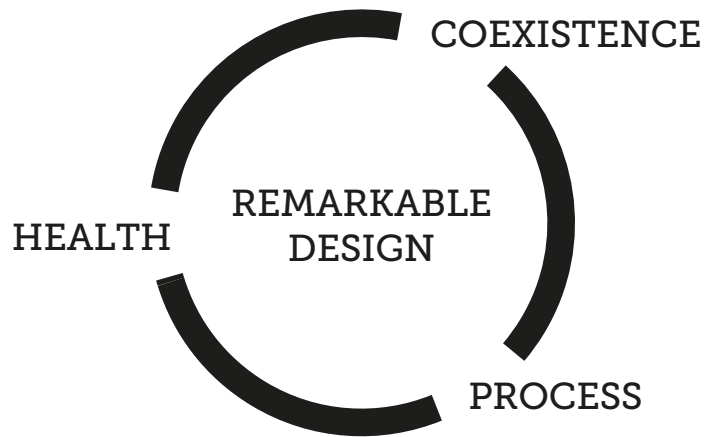
Process

We know the process through which we generate physical environments, has a huge impact on the result.

We involve the users in our architecture both before and during the creative process. This approach enriches the projects and results in the best possible solution for each user.

Health

We design healthy cities and buildings. We use sustainable materials and integrate nature into our projects. We design active environments that are vibrant.



**IKLING AF RESSOURCER PÅ EN BÆREDYGTIG
– OG DEMOKRATISK – MÅDE**

Vi har en historisk mulighed for at skabe et bedre Grønland. Den globale efterspørgsel efter vores naturressourcer – især olie, og med en varmere klima bliver mineraler, vandkraft og olie mere tilgængelige.

Udvikling af vores ressourcer kan hjælpe os til at smække de udfordringer, vi står overfor, vi har verdens største offentlige sektor, sociale problemer, dårlig uddannelse og en svag erhvervsudvikling, og vi er dybt afhængige af tilskud fra Danmark.

Som det blev sagt af vores Velfærdskommission i 2011: Status quo er ikke en mulighed!

Der skal grundlæggende samfundsendringer til, vi er nødt til at diskutere HVORDAN.

**CULTIVATING RESOURCES
– AND DEMOCRATIC WAY**

We have a historical opportunity to create a better Greenland. The global demand for our natural resources is increasing, and with a warmer climate, minerals, hydropower and oil are becoming more accessible.

Cultivating our resources can help us meet our challenges. We have the world's large public sector, social problems, poor education and weak business development, and we are heavily dependent on subsidies from Denmark.

As our Welfare Commission stated in 2011: Status quo is not an option!

Fundamental societal changes are needed. We need to discuss HOW!

UDGIFTER / EXPENSES

**FØR GRØNLANDS
STEMMER
SAMMEN**

**CONNECT THE
VOICES OF
GREENLAND**

INDTÆGTER / INCOME

2008

THE GAP

NOW



HEALTH CARE ENVIRONMENTS

Good design is based on a deep understanding of the users' needs and the local or urban context.

NORD Architects has always approached the healthcare sector with an open-minded perspective that has led us to groundbreaking and internationally appreciated architecture with a unique focus on the end users. Our built projects are characterized by high quality design with a Nordic expression and understanding of scale and materials.

NORD Architects has played a major role in the innovation of international healthcare sectors and social sustainability in new housing concepts. These concepts are based on creation of vibrant communities with diversity and co-existence between people.

NORD has designed some of the newest and most innovative health and nursing homes in Scandinavia and Europe, among these the development of one of Europe's first centers targeted at patients with Alzheimer's and dementia - the Alzheimer's village in Dax, France. The village concept is a unique way to create local communities where people can live together in active social networks and experience cohesion and a continuation in the everyday life.

The village concepts are generic and adaptable for other housing typologies like senior or youth housing or intergenerational communities, where people share facilities and support each other in many common activities. Taking the local context into account

and integrate architecture, buildings, healthcare centre or housing in the existing surroundings and enhance the characteristics of the site, creates a layout for co-existence between people inside and outside institutions.

Being involved in healthcare design is, in our opinion, a matter of taking care of and embracing the essential issue and fundament in a modern welfare system. We thrive to create an environment and atmosphere that lets patients and relatives relax and heal in the best possible way, paying respect to the employees' work environment.

The creation of our architecture is rooted in a deep understanding of the users' needs, behaviors and actions which we translate into spaces and spatial relations. Our method can be used in all building typologies, and we carry the knowledge across different projects. Being involved in healthcare design is, in our opinion, a matter of taking care of and embracing people. We thrive to create an environment and atmosphere that lets patients and relatives relax and heal in the best possible way.

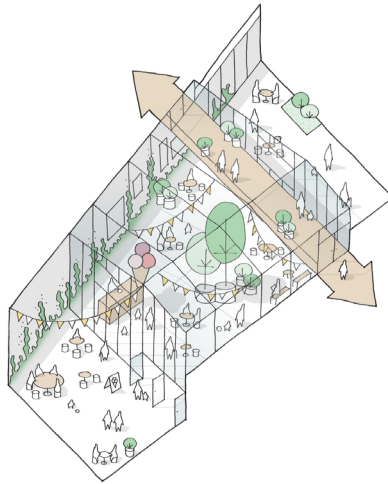
Furthermore, the healthcare buildings we design are created with an understanding for the employees' work environment as well as the users' needs in what might be very sensitive life situations.





Healthy aging and care in sustainable building environments, that create social relations and meaningful surroundings.





FURUSET HAGEBY

A nursing home integrated in the local community

Location Oslo, Norway Client Municipality of Oslo, Omsorgsbygg Oslo

Year 2018- Typology Nursing home Size 11.500 m²

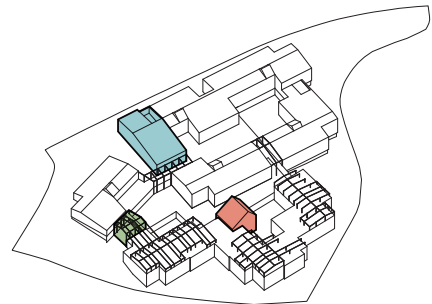
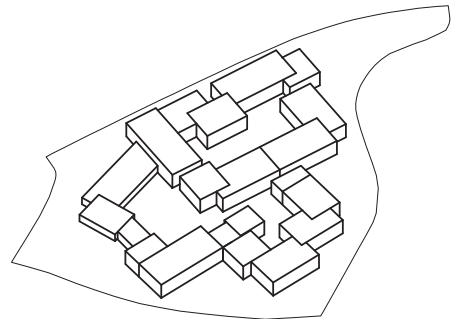
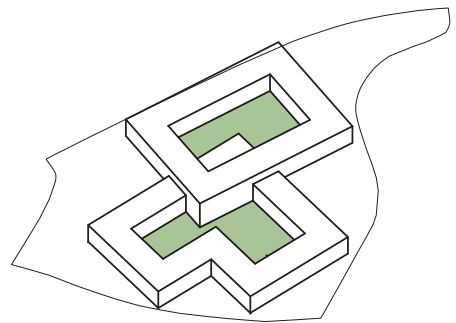
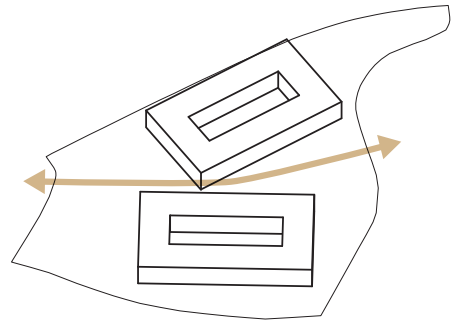
Collaborators 3RW, Christian Mong

Status 1st prize in competition, ongoing

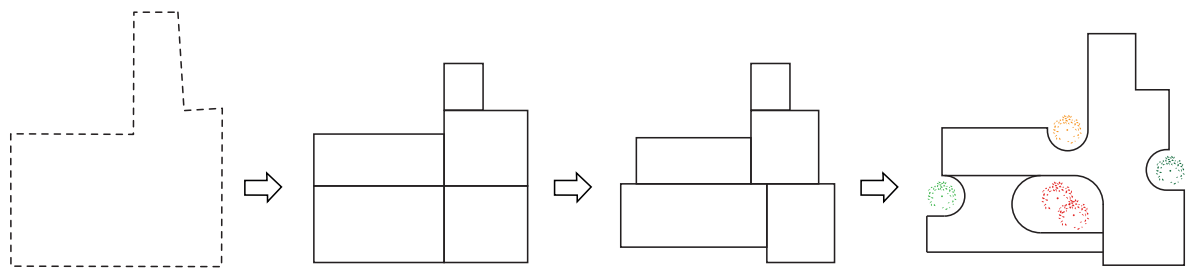


Experience of homeliness,
continuity of everyday activities
and atmosphere eases lives with
dementia.









URBAN HOSPICE, COPENHAGEN

A new typology in a historic setting

Location Frederiksberg, Denmark Client Diakonissestiftelsen Year 2016
Typology Hospice Commission Head consultant Size 2,200 m²
Collaborators MASU Planning, Rambøll
Status Built



The first urban hospice in Denmark.
When healthcare is close to you
and your relatives. Death is a natural
part of life and the hospice is an
integrated part of the city and it's life.





ALZHEIMER VILLAGE IN DAX

NORD Architects won the competition to realize
a village for people with Alzheimer's disease
and dementia in France

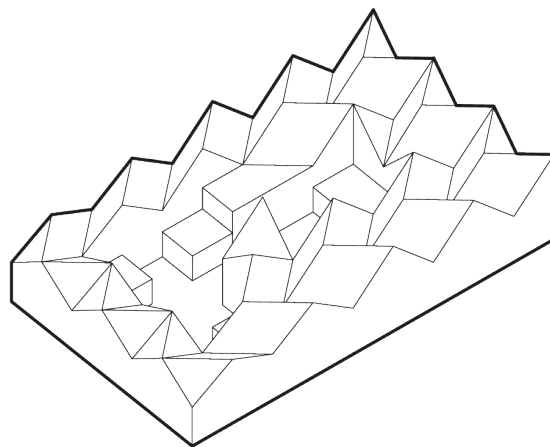
Location Dax, Frankrig Client Departement des Landes Year 2016-2020
Typology Housing for people with alzheimer Commission Architect
in turn-key contract Size 10.700 m2 Collaborators Champagnat &
Gregoire / Groupe Cauros Status Under construction











HEALTH AND CANCER CENTER

Innovative approach to health architecture
in Copenhagen

Location **Copenhagen, Denmark** Client **Municipality of Copenhagen**
Year **2005-2011** Typology **Cancer and health care center** Commission
Prequalified competition Size **2,200 m²** Collaborators **Wessberg**
Status **Built**

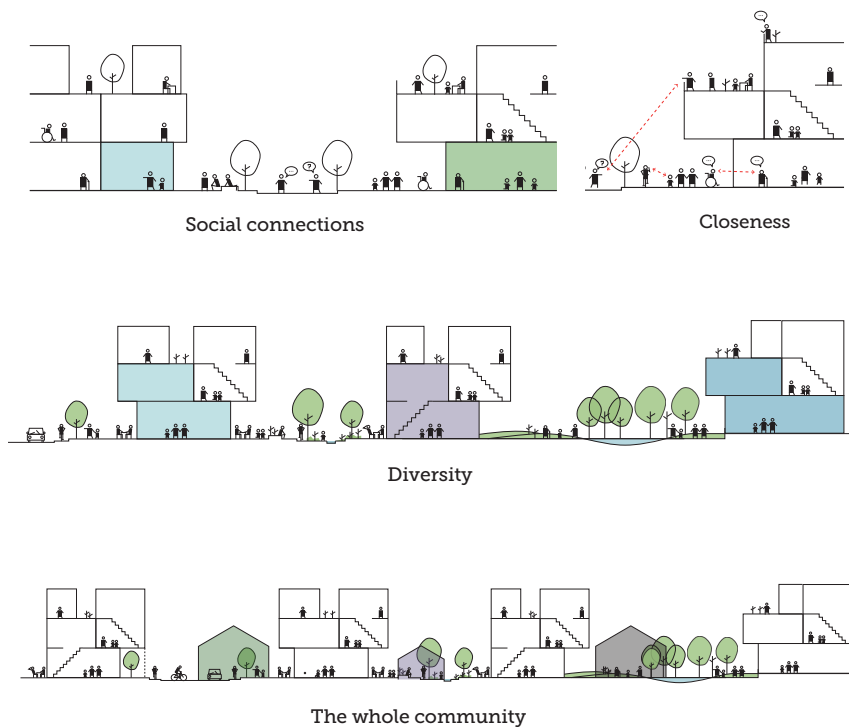


The Cancer Centre has an iconic and straight forward profile towards the street. In contrast the inside is secluded, warm and welcoming for the users and employees. The centre unite public, civil and private initiatives in one building.



LIVING AND LEARNING

Social interactions, co-existence between people and sharing activities, create new healthy and sustainable communities that are vibrant.



NORD Architects designs a large variety of typologies in different housing projects that share social sustainability as a common feature. We are involved in youth housing, senior housing, housing for elderly as well as villages for people with dementia. These projects often break down the borders between young and old, singles and families, home and institution, being sick and well. We challenge the conventional ways of living by suggesting more diversity, co-existence and intergenerational relations between people.

NORD Architects works with urban residential projects that create new neighborhoods where generations can live side by side, or where the city supports Alzheimer's patients, as an example. The co-existence of different people, typologies and activities creates new possibilities for establishing communities that are more diverse and vibrant.

We design for a high degree of flexibility and differentiation, with integration of the local community, landscape or urban areas and often link facilities. Integrating public functions, like a daycare center, restaurant, research center or a foodbank into a

residential project can create new synergies and destinations for the neighborhood.


By this we encourage the development of cities that are livable, compact and sustainable. Sharing activities in an inclusive community brings a mixed social life and environmental sustainable living to front. Communities could be based on circular economy, exchange of services, products and an overlay in functions, could increase the social quality, creativity, life joy and entrepreneurship.

The diversity in communities could generate a more proporous and vibrant living that have positive impact on society in such and from which even welfare institutions could benefit from. Social and healthy interactions show improvements in life quality that could encourage social achievements.

Changing demographics call for new innovative solutions for living areas and we make an effort to take the challenges into consideration.







Sustainable community with
shared activities, diversity and
circular economy



STEJLEPLADSEN, COPENHAGEN

Pioneering housing development focusing on social sustainability and circular economy

Location Copenhagen, Denmark Client City of Copenhagen Year 2019

Typology Masterplan for mixed sustainable housing

Commission Head consultant

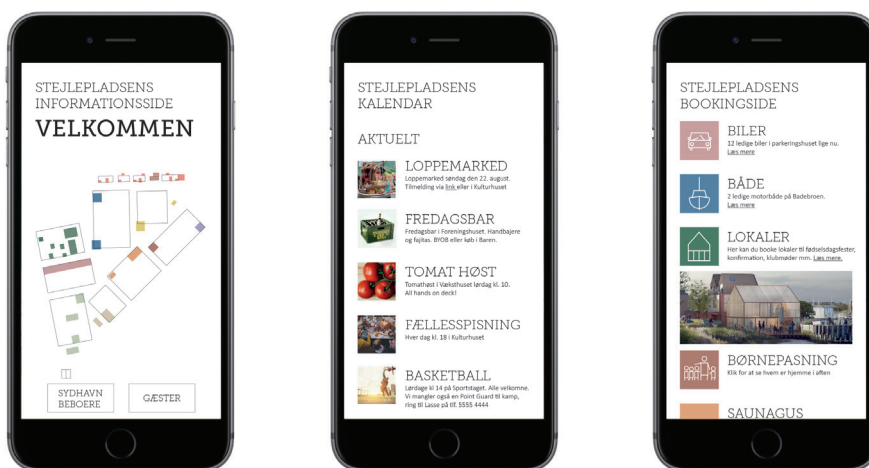
Size 72.000 m² Collaborators MASU Planning and Sweco Status Competition completed



Shared facilities and circular economy



EN DIGITAL PLATFORM HJÆLPER BEBOERNE AT FØLGE MED I AKTIVITETER OG ADMINISTRERE DELEØKONOMIEN



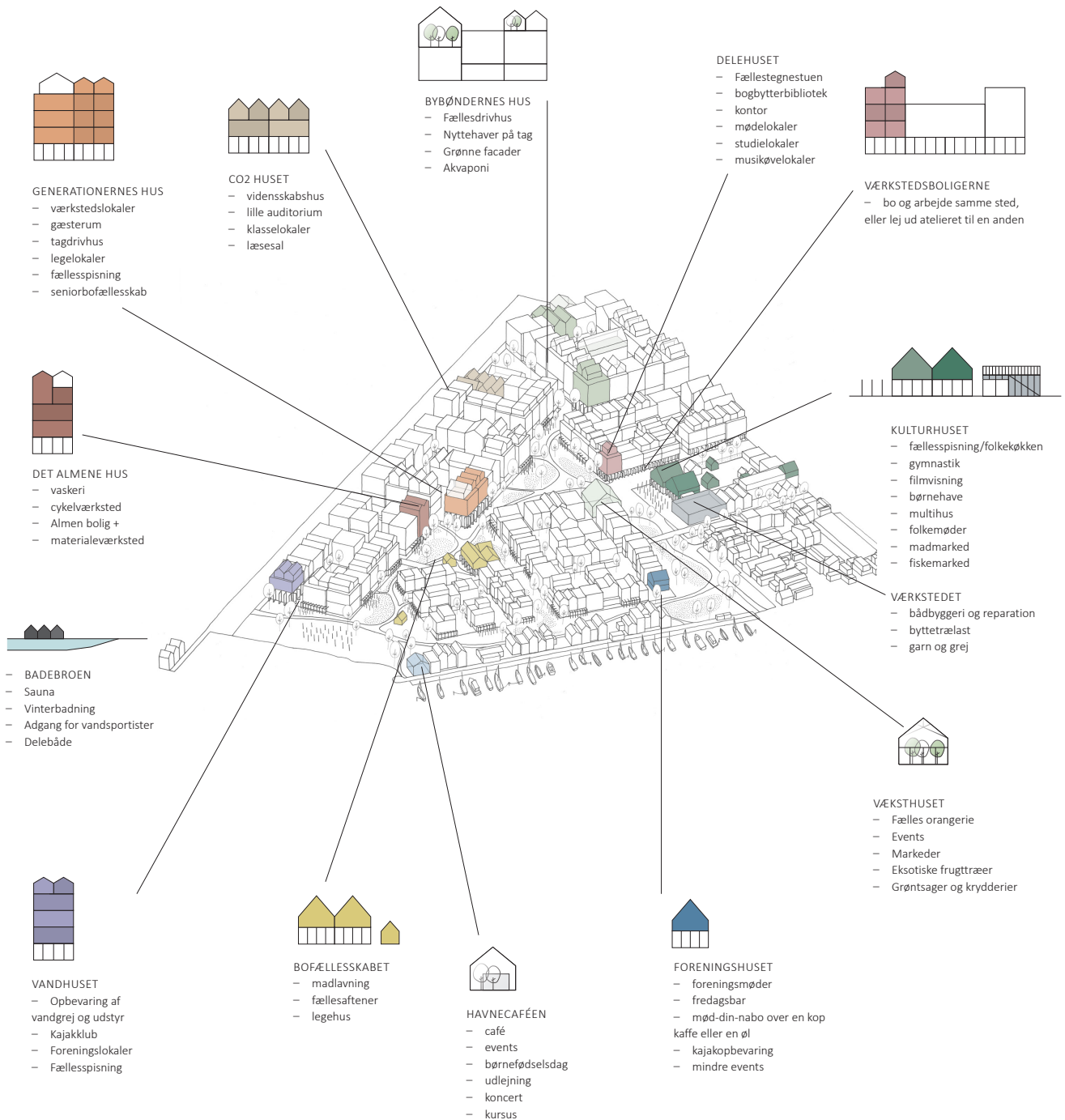
The residents of Stejlepladsen (meaning Stakes' Square) will live in a community where they share with each other inside and outside the district. The common facilities are for all residents of the area and a digital platform is designed and developed to help people keep up with activities, manage the shared economy, circulate products, book spaces for events and engage themselves.

Stejlepladsen's design and organization is based on relationships and coexistence. We have been occupied by finding the answers

for an essential question: What creates the good city and how should people be engaged in their community?

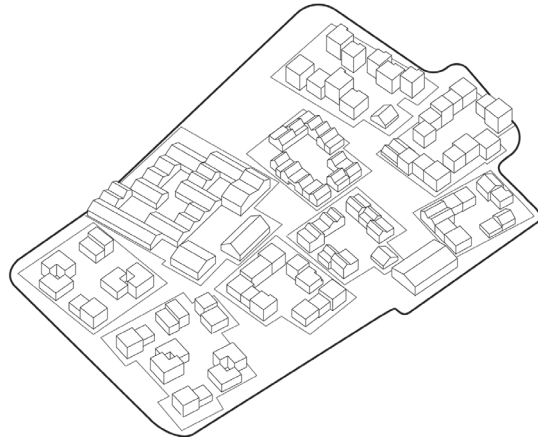
All residents potentially have a role to play and needs that can be met. Young people can help the elderly. The elderly can help the busy family of children. The single can find a social community. The Steeple Square is a neighborhood for all people- an engaging neighborhood. The resident composition must ensure that social synergies and natural inclusion can arise.

Communities first



Communities of all scales are a prerequisite for area sustainability. It is through community and social context that we can rethink the way we live and consume. The steeple has the potential to integrate several elements of the circular economy- you don't need to own a car, a drill or your own backyard when you

can share it all. At Stejle Square, residents share things and share activities: here you can set up shared cars, shared dining, temporary offices, (joint) workshops, foodsharing, exchange centers, etc. The physical setting of these community facilities is an essential part of the neighborhood's culture and architecture.



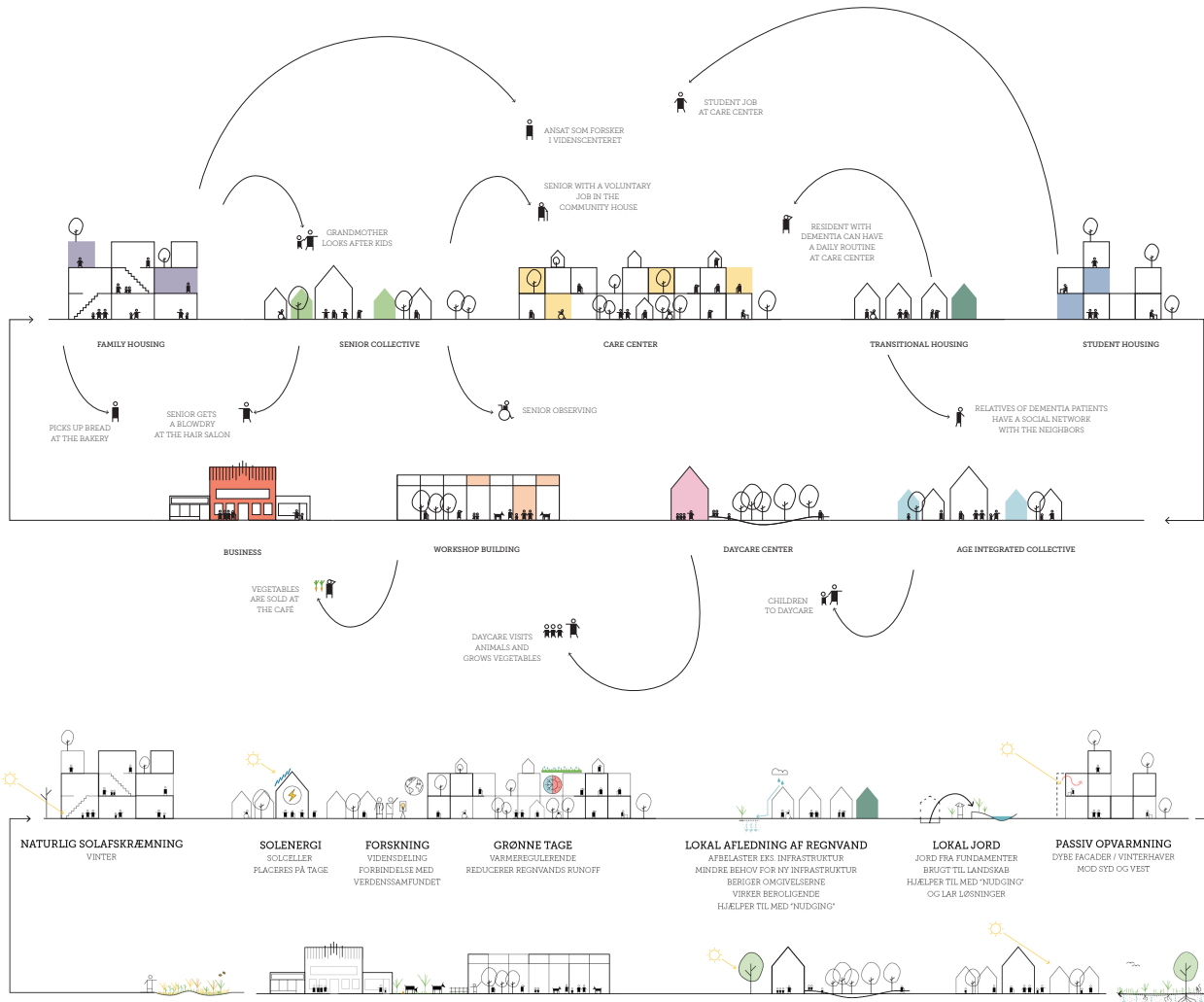
CO-EXISTENCE VILLAGE

Intergenerational living in a neighbourhood of synergies

Location Odense, Denmark Client OK Fonden Year 2016- Typology
Masterplan for mixed housing Commission Head consultant
Size 35.000 m2 Collaborators UHA Status In progress







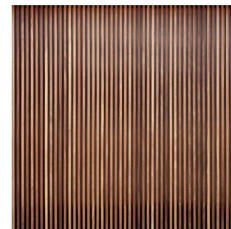
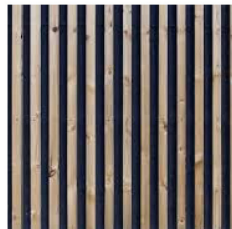
LOKALE BIOTOPER
VILD BEVOKSNING
BIODIVERSITET
MINIMUM VEDLIGEHOLD

DYREHOLD
TIL GLEDE FOR FOLK
HJÆLPER TIL MED DEMENSBEHANDLING
NØJNERE GRÆSLANING
ORGANISK GØDNING

NATURLIG SOLAFSKRÆMNING
SOMMER

TÆT-LAV
MINIMUM SKYGGE
GODT MIKROKLIMA
GOD SOCIAL SKALA

PERMEABLE OVERFLADER
BIODIVERSITET
VANDHÅNDTERING
SUND JORD

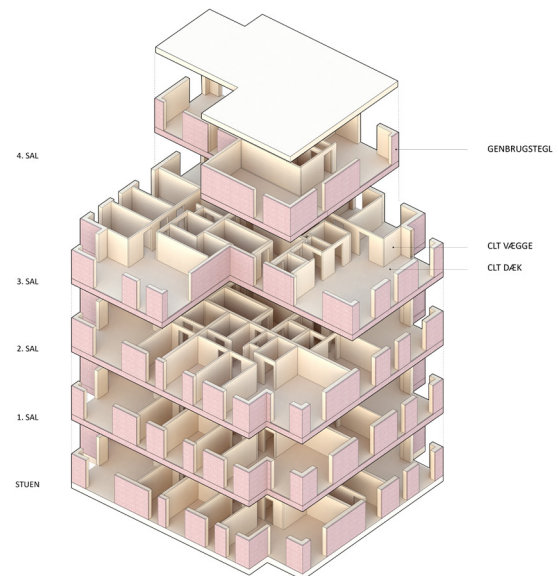






MATERIALS & BUILDING METHODS

Wood in buildings reduces the total carbon emissions and provide healthy indoor climate.



The building sector in Denmark is responsible for almost 40% of the country's total CO2 emissions. This calls for new ways of planning, thinking, designing and using buildings in social, human and technical matter. The durability of the materials and the whole building as such is a crucial marker for the lifespan of a building and it's total environmental footprint. It's of huge importance to design flexible spaces and buildings, where functions can alter during time and adapt to different needs and uses.

The ability of transformation is an important aspect of the buildings success in terms of sustainability. We are often invited to projects by public clients where we consider LCA (Life-Cycle-Anal-

ysis) and in collaboration with other advisors evaluate the value of materials in a life cycle perspective related to considerations on economical costs.

We keep developing knowledge about environmental issues and integrate these sustainability breakthroughs in the projects we design. Healthy materials is fundamental for sustainable living and we have focussed on using innovating methods in constructions e.g. CLT (Cross Laminated Timber). These CLT elements are structural and loadbearing elements that could be used as finished interior surfaces as well, making it a very genuine new building material.



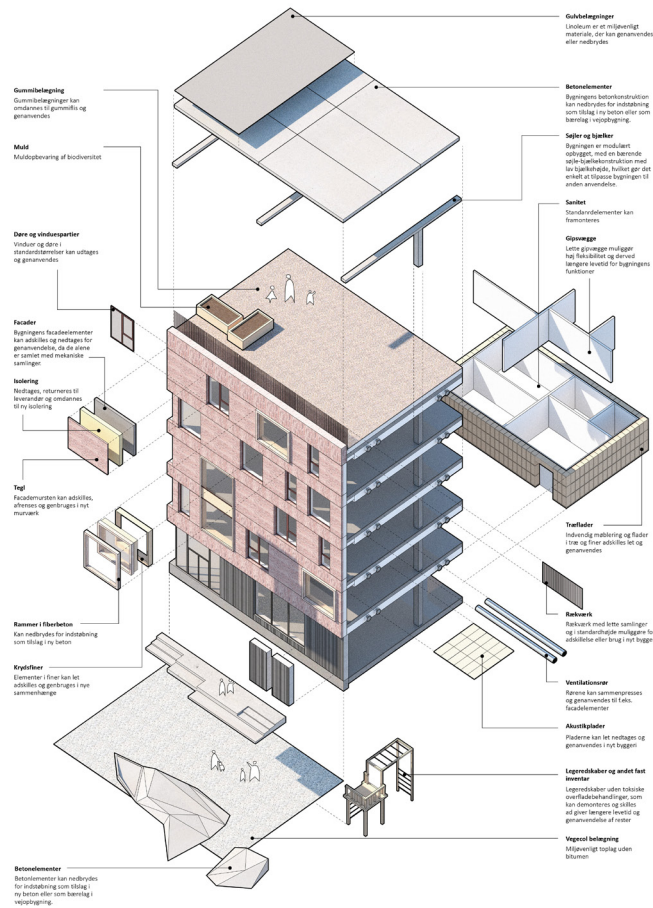
Learning landscapes promote social connections in shared spaces which are open to public and can be used for different activities 24/7.



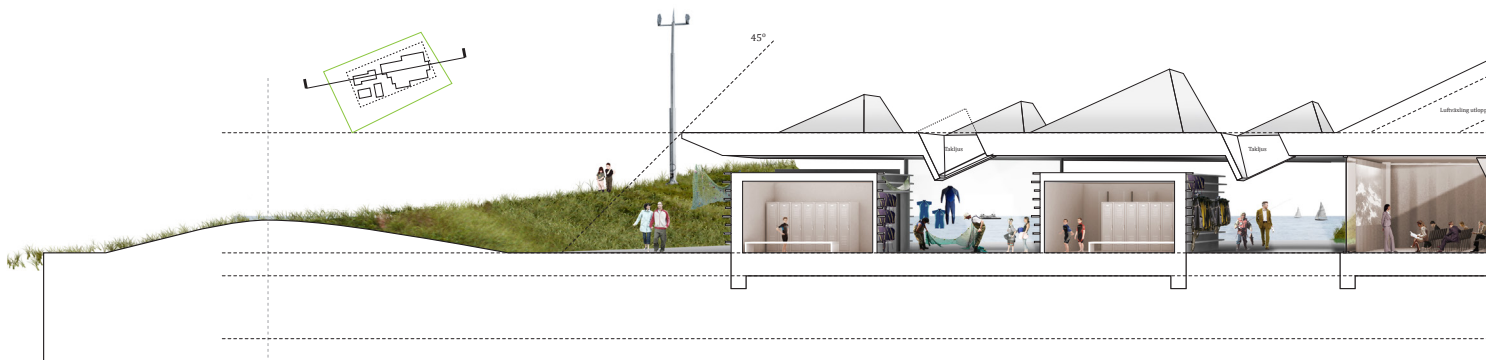


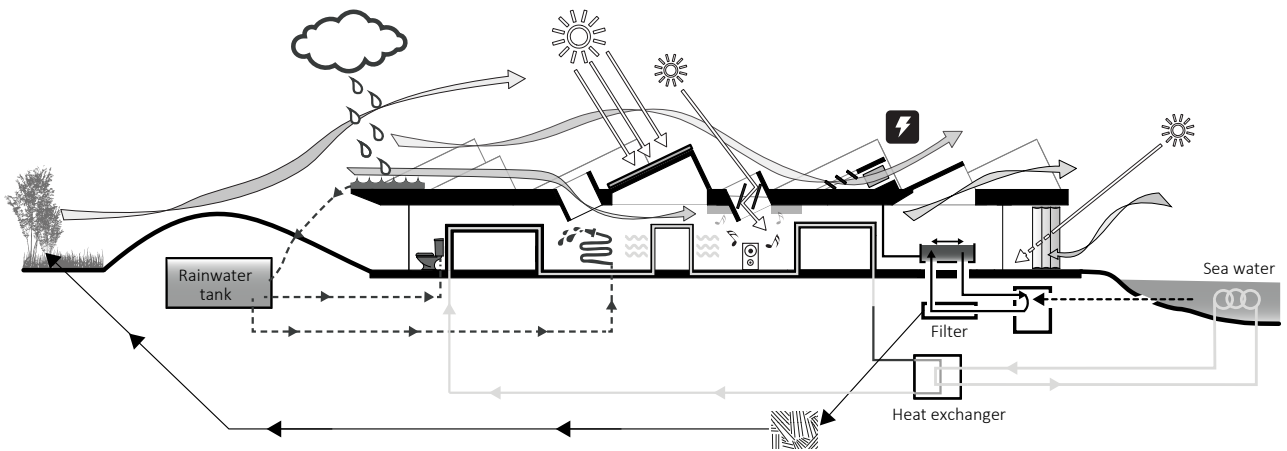






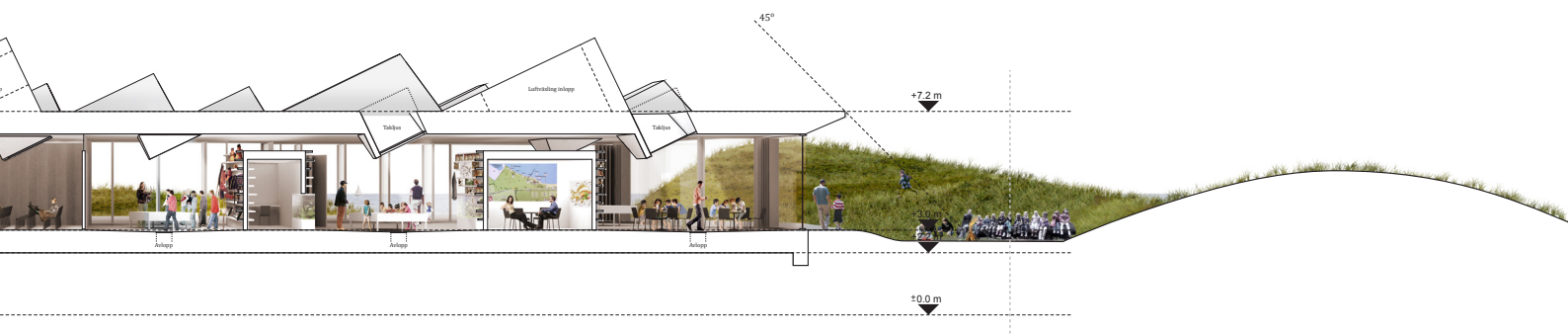
Strategy for assembling and detaching materials and elements for recycling, reuse or transformation of building. The lifespan of materials, elements and the building itself comprise a complex perspective that is essential to plan and consider in every project.





Strategy for a sustainable energy consumption, with re-use and cleaning of water in respect of the site and environment. Sea water, rain water, sun energy, wind and ventilation are all natural elements that perform technically in the giant roof.

Using the local conditions in a smart way can enhance the local identity of architecture and strengthen both biodiversity and the site specific character.







NORD Architects will continue to design buildings and learning landscapes that integrate and communicate modern takes on how we can improve sustainable living.

ARCHITECTS DECLARE

We support the joint worldwide forces of architects and signed the Danish Climate & Biodiversity Emergency.

NORD Architects have signed the Declaration of Architects, Danish part, to support sustainable initiatives and strive for actions.

The climate crisis and biodiversity loss are the two most serious crises of our time. Buildings and structures play a major role here, accounting for almost 40% of energy-related CO2 emissions. At the same time, buildings have a significant impact on our natural surroundings.

If the entire building industry is to meet the needs of society without taking on the environmental resources of the earth, it requires a paradigm shift in our behavior and workflows.

Together with our customers, we must develop and design buildings, cities and infrastructures as an underlying part of a larger, constant regeneration and self-driving sustainable system.

We have both research and technology that will allow us to begin the transformation, but we simply lack cooperation.

By recognizing this, we are committed to strengthening our work approaches, which can help create architecture and urbanization that has a more positive environmental impact on the world around us.

Raise awareness of the climate and biodiversity emergencies and the urgent need for action amongst our clients and supply chains.

Advocate for faster change in our industry towards regenerative design practices and a higher Governmental funding priority to support this.

Establish climate and biodiversity mitigation principles as the key measure of our industry's success: demonstrated through awards, prizes and listings.

Share knowledge and research to that end on an open source basis.

Evaluate all new projects against the aspiration to contribute positively to mitigating climate breakdown, and encourage our clients to adopt this approach.

Upgrade existing buildings for extended use as a more carbon efficient alternative to demolition and new build whenever there is a viable choice.

Include life cycle costing, whole life carbon modelling and post occupancy evaluation as part of our basic scope of work, to reduce both embodied and operational resource use.

Adopt more regenerative design principles in our studios, with the aim of designing architecture and urbanism that goes beyond the standard of net zero carbon in use.

Collaborate with engineers, contractors and clients to further reduce construction waste.

Accelerate the shift to low embodied carbon materials in all our work.

Minimise wasteful use of resources in architecture and urban planning, both in quantum and in detail.

“

