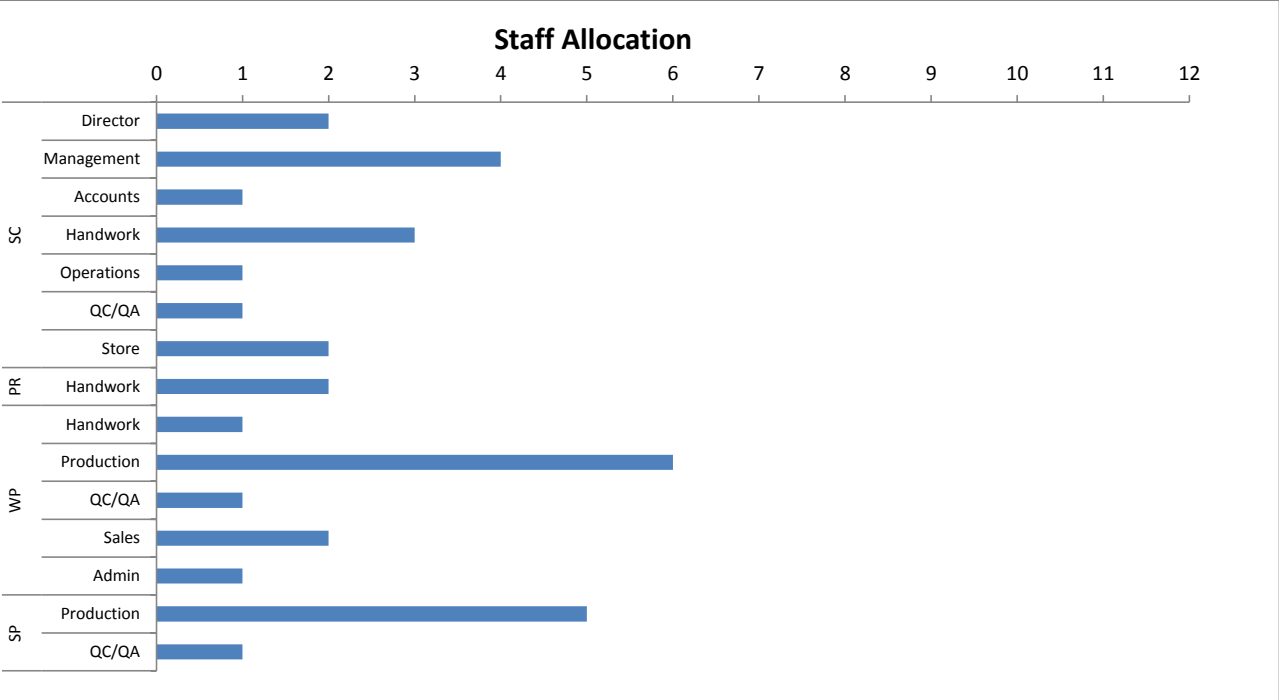


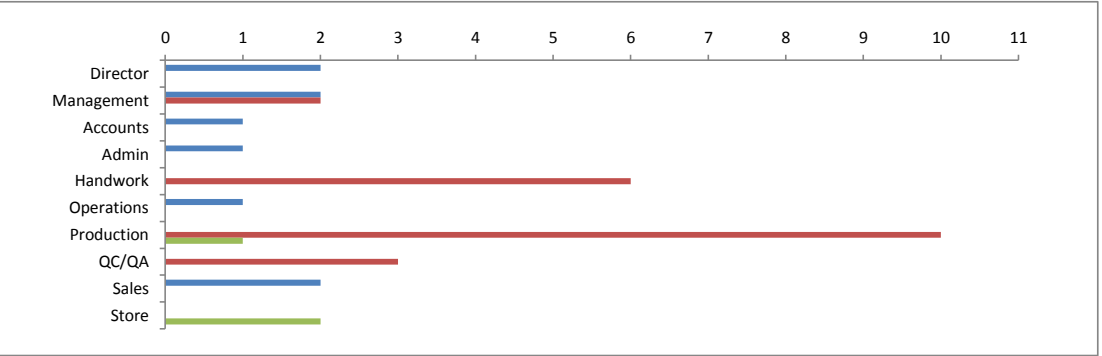
FYNO Precision Pte Ltd
Employment Status Type

| Employee status | Type | |
|-----------------|------------|-------------|
| Row Labels | Perm staff | Grand Total |
| SC | 14 | 14 |
| Director | 2 | 2 |
| Management | 4 | 4 |
| Accounts | 1 | 1 |
| Handwork | 3 | 3 |
| Operations | 1 | 1 |
| QC/QA | 1 | 1 |
| Store | 2 | 2 |
| PR | 2 | 2 |
| Handwork | 2 | 2 |
| WP | 11 | 11 |
| Handwork | 1 | 1 |
| Production | 6 | 6 |
| QC/QA | 1 | 1 |
| Sales | 2 | 2 |
| Admin | 1 | 1 |
| SP | 6 | 6 |
| Production | 5 | 5 |
| QC/QA | 1 | 1 |
| Grand Total | 33 | 33 |



Employment status Perm staff

| Staff to Department | Labels | | |
|---------------------|------------|--------|---------|
| Row Labels | BackOffice | Direct | Support |
| Director | 2 | | |
| Management | 2 | | 2 |
| Accounts | 1 | | |
| Admin | 1 | | |
| Handwork | | | 6 |
| Operations | 1 | | |
| Production | | | 10 |
| QC/QA | | | 3 |
| Sales | 2 | | |
| Store | | | 2 |
| Grand Total | 9 | 21 | 3 |



Employment status Perm staff

| Gender | | |
|----------|------|-----|
| Female | Male | |
| Gender % | 42% | 58% |

