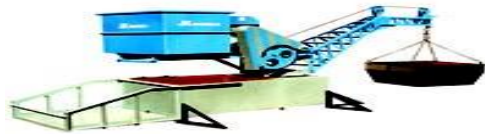




United Nations
Global Compact



ZONAL CONSTRUCTIONS AND HANDLING SERVICES, Co, Ltd.

Chief Executive Director

Hassan Yussuf Maalim

Tel: +254 -721449340/+252 -617431477

Email: zonalconstructions.ltd@gmail.com

Website: www.zonalconstruction.org

COMMUNICATION ON PROGRESS

STATEMENT BY MANAGING DIRECTOR

Zonal Construction and Handling Services Company do hereby kindly reconfirms renewed commitment and engagement to the United National Global Compact development and promoting its ten principals with respect to labour, human rights, environment and anti corruption by continuing to align and integrate with our day to day activities, projects and programmes , culture and business practices , and our strategic planning and implementations of our business actions in our operational sphere of influence for the broader development of the United Nation Goals, corporate sustainability governance and leadership for the overall achievement of the sustainable development goals and in particular agenda eight of the SDGs Decent Work and Economic Growth-to Promote sustained, inclusive and sustainable economic growth, full and productive employment and decent work for all. During the reporting period Zonal Construction and Handling Services Company had expanded its business engagement and made significant accomplishment in commensurate with UN Global Compact corporate business sustainability , governance , leadership , communication and tram work , business process reengineering with sole aim to better planning, management and implementation for better services deliveries , reporting and management of business SWOT and bench marking .

ZONAL Construction and Handling Services Company registered and operational in both Somalia and Kenya head quartered in Somalia and with its operational field offices in Somalia and Kenya counties , Zonal Services is competent construction and Supply chain management large scale operations (logistics ,Order processing , transportation , warehousing and distributions , procurement) activities and services executions including -products development , fiancing , sourcing , production , logistics , forecasting , information system management with excellent progressive operational,technical and strategic leadership in planning,designing,development,organization, Management , coordination/liaison with wide and diverse stakeholders and implementation of large scale Supply Chain Operations documentations and reporting , Transport and market research and assessments , data analytical , contextual analysis , contracting and negotiations, supply chain corridors and Supply routes monitoring ,convoy tracking, management, potential transport and retail service providers selection , relationship management and performance monitoring and evaluations, Cash Based Transfer projects interventions management and Progressive professional work experience qualifications in Cash Based Transfer projects management, Logistics capacity assessments, trainings and capacity building and related Business support and marketing services provider committed to

achievement of agenda eight of the SDGs locally and across activities to Promote sustained, gender inclusive and sustainable economic growth, full and productive employment and decent work for all in line with today's first growing business and technology competently with reduced lead time, adding value to the market and supply chain infrastructure in time service deliveries effectively and efficiently with sole objective of clients and customers satisfaction all in commensurate with both private and public sector partners/clients/ organizations , We provide innovative and exceptional business processes and transactions analytical services with deep attention to details and meeting customers' demands for various business sectors services provisions .Zonal Services will continue integrating this principles in practice for all our engagements and business activities implementations actions .

I do hereby once again confirm to the United Nations Global Compact team our continuous commitment submission of Communication on progress reports to the United Nations Global Compact and to our stake holders /clients and to the public for transparency and accountability.

Chief Executive Officer

Hassan Maalim



Zonal Construction and Handling services Co , Ltd supports the ten universal principles of the United Nations Global Compact which is a strategic policy initiative for business corporate and social responsibility and aligns day to day and strategic operations in our business operations , strategies , actions implementations and compliance adhering with the following universal principles effectively and efficiently.

HUMAN RIGHTS 1. Businesses should support and respect the protection of internationally proclaimed human rights; and
2. make sure that they are not complicit in human rights abuses.

LABOUR 3. Businesses should uphold the freedom of association and the Effective recognition of the right to collective bargaining;
4. the elimination of all forms of forced and compulsory labour;
5. the effective abolition of child labour; and
6. the elimination of discrimination in respect of employment and occupation.

ENVIRONMENT 7. Businesses should support a precautionary approach to environmental challenges;
8. Undertake initiatives to promote greater environmental responsibility; and
9. encourage the development and diffusion of environmentally Friendly technologies.

ANTI-CORRUPTION 10. Businesses should work against corruption in all its forms, including
Extortion and bribery.

Zonal embraces and supports these principles and strives to integrate them into policy, Strategy and business action practices and day to day activities and accomplishments of tasks and responsibilities across business operation engagements and with our staff , clients and stake holders .

ENVIRONMENT

We very much acknowledge that our activities have the potential to affect the environment either positively or negatively. Hence aim to improve continuously all environmental aspects of our business operation.

In addition to using resources wisely, we strive to minimize any negative environmental impacts that could be caused by our business activities.

We focus our environmental efforts on activities that we believe have the greatest impact. Today we work on an overall level in major areas such as reducing carbon dioxide emissions, using alternative energy sources, managing waste water, and reducing energy consumption.

We moved forward and ahead in comparison with previous year, company is investing and marketing alternative modern high energy efficient products, goods and services e.g. solar lights and installation systems introductory, safe guiding the natural resources and climate change adaptation and mitigation measures and taking balanced approaches in investment in low carbon strategy, advocating in its advancement and enhancing resilience.

Environmental Activities co-ordination

Each and every business unit has a senior manager in charge of developing, planning and implementation of measures to ensure strict adherence and compliance, they are also responsible for developing and implementations and roll out of related and specific business activities (SOPs) Special Operation Procedures for environmental preservation and promoting positive environmental utilization and sustenance.

Each unit has its own action plan detailing the work towards achieving the goals set for social and environmental, waste management, saving energy and water, as well as minimizing environmental impacts from company supply and transportation sector services. The operations progressively introduces tougher demands in the area of environmental management, such as energy consumption, waste management and the use of alternative efficient energy products and services.

They also demonstrate that they have effective and reliable methods for monitoring progress and risk management. There are monthly reviews, focusing on issues related to environmental management set-up and evaluation of actual performance.

Description of our Processes or Systems

We support the principle of “wise- and efficient use” and Management and see this as key to sustainability development goals and new technology engagement and the long term preservation of our natural resources.

As part of our business objectives we therefore:

- Seek the efficient use of natural resources;
- Seek investment opportunities where sound

Economic development is coupled with the Protection and improvement of the Environment;

- Avoid investments where impacts on Communities and the environment have not been properly considered and mitigated in their design.

The Company has the necessary processes for follow up, measurement and analysis, including that of claims by workers or other persons or groups, to evaluate the functioning of our social and environmental management system. The results of these processes are recorded and incorporated into the policies through a continual improvement plan and program.

In addition :

- We ensure that the environmental effects of our investments are assessed and Monitored in the planning, implementation And operational implementations stages.
- The business is designed and operated to comply with national and international legislation.
- We do not knowingly support businesses and practices which contravene any relevant international conventions .
- We assess the environmental standards and practices for planned projects and achieved by operational projects with reference to local regulations and policies .

This is to enhance environmental sustainability and encourage a long term development Perspective in the way we conduct our Business parallel with global sustainable development goals . All existing natural ecosystems, both aquatic and terrestrial, have been identified, protected and are being restored through a conservation program.

The program includes the reforestation of areas within the

farms that are unsuitable for agriculture.

- the company maintains the integrity of aquatic or

terrestrial ecosystems inside the farms and do not permit their destruction or alteration as a result of management or production activities.

- The company Production areas are located in places that cannot provoke negative effects on national biological corridors, forestry reserves, buffer zones or other public or private biological conservation areas.

- The company implement a training and education program in order to guarantee the effective execution of the social and environmental management system and its programs. The training topics are identified according to the position, and type of work carried out.

- Records are kept that include the participants' signatures, topics covered and the instructor's name for each capacity building training and educational event. The employees and clients are both covered in our trainings and educational events .

Waste management

Our operations have an integrated waste management program for the waste products generated in the our activities and that of the vulnerable groups in the communities we serve and programmes supported by humanitarian agencies benefitting humanitarian aid beneficiaries .

This is based on the concepts of refusing or reducing the use of products that have actual or potential negative impacts on the environment or human health waste as well as reusing and recycling waste.

The sources and types of waste have been identified and the quantity (weight or volume) estimated. The activities of the integrated waste management program are in accordance with the types and quantities of waste generated.

We have appropriate treatment systems for all of Wastes solid and liquids generated.

The treatment systems

comply with applicable national and local laws and customs and have the respective operating permits.

There are operating procedures for wastes

Systems management and biological indicators such as fauna and flora showing good growth and diversification in species

proving that it is effective , this is for waste water management

Ashes and clinkers

generated from the combustion of firewood are placed on the compost heap.

On the other hand Solid waste i.e are placed on compost heap for recycling i.e used as manure, an alternative fertilizer source..

Office refuse is sorted and the combustible materials are burnt in boilers and other material disposed of in a pit. The metal scraps are collected and sold to a scrap dealer. Paper and plastic is disposed of by recycling where possible. Solid factory waste consists mainly of plastics, paper, textiles, cotton wool, glass, pieces of wood etc. Litterbins are provided at each factory for collection of waste with separation at source.

Incinerators are available to dispose off and the ash from the incinerator is buried accordingly.

Human waste from management houses and factories are collected in septic tanks. The human waste from the village is handled by use of the pit latrines, which are properly decommissioned when full. The 'VIP' pit latrine types, are well ventilated for reduction of bad odour and flies.

The compost heaps for biodegradable rubbish generated in the estate villages are built according to a very specific design from our social/ environmental consultant.

As a further waste management strategy a waste classification report has been compiled and the analysis conducted.

Energy consumption

Zonal company farming and production of Banana , lemon juice , seism , onion , beans and fresh fruits and green vegetables consumes mainly thermal and efficient solar energy installed system and electrical energy as alternative source of energy when need be .

Our goal is to reduce related environmental hazardous and impacts by investing /marketing new efficient and effective high energy products and services like solar lights and system installations , capacity building for repair and maintenance , thermal energy use and by doing this we are turning the global goals in to business actions and implementations across our operations

Energy use is continuously monitored at each

Sector and area .

Staff are well trained on utilization of energy recourses – with principles of observations of switching off light when leaving office and living quarters , avoid printing un necessarily , printing and preserving the environment .

Transportation

The impact exerted on the environment as a result of Transport activities related to our operations cannot be overlooked and therefore Smart route planning, full utilization of the volume capacity in a trailer as well as the filling with the right weight of goods is the most effective

weapon to reduce the environmental impact and cost of transport , in time transport reserving

Households

Households levels main sources of energies are still fuelwood, Kerosene, Liquified Petroleum Gas (LPG) , but The shift to high efficient energy products investment has contributed to great change at village levels whereby the solar energy system is gaining popularity and becoming clients choice .

Water Management

We have instituted a water conservation program that ensures the rational use of water resources. The program activities make use of the best available technology and resources.

We consider water re-circulation and reuse, maintenance of the water distribution network and the minimizing of water use. We keep an inventory and indicate on a map the surface and underground water sources found on our farms. The operations record the annual water volume provided by these sources and the amount of water consumed. We have obtained the relevant permits for the abstraction of water for all extraction points.

We have maintained vegetations growth along the Rivers and streams and canals and wetland sections are conserved accordingly.

Monthly water quality analysis is carried out and the verification of the parameters done by External laboratories. The parameters analyzed for include chemical, physical, Microbiological and nutrient composition. A possible source of contamination of the surface water wash-down effluents, runoff and the nutrients in the form of the fertilizers applied in the fields. Fertilizer runoff has been monitored in recent years. No pollution of watercourses or swamps has been detected .

Regular audits, of water pumps are conducted to determine deviations and enquiries done to ascertain whether the storage tanks are leaking.

Air Quality management

The estates emissions into the air include smoke from the boilers, gases from maceration, dust from tractors, vehicle emissions, as well as smoke from within the households (Charcoal stoves) and firewood across the estates. The point sources of emissions

are the generators and the boilers.

Air pollution may be caused by emission from the combustion of fuel wood. The main pollutants of concern are carbon dioxide, carbon monoxide, Sulphur dioxide, nitrogen oxides, hydrocarbons, dust, fly ash, and particulate matter, which are produced during combustion. Indoor pollution may lead to negative impact to occupants and exposed workers. Common effects are respiratory disease including allergies and bronchitis. Mitigation measures including proper ventilations, tall stacks, provision of chimneys in kitchens, and fuel efficient high energy cooking stoves , Jikos are practiced on the estates. No evidence of any significant air pollution from our activities or vehicles is apparent and no complaints have been received.

A dust analysis was conducted by an independent consultant and remedial actions implemented as recommended.

Households within the villages are using high energy efficient products like solar nergy conservation efficiency and ventilation.

The use of improved cooking stoves using noise less efficient energy has reduced fuel consumption and ensured that there is less smoke in workers homes and environment .

Soil management and conservation

High rainfall and undulating hills favor erosion.

Isolated areas are prone to erosion but these are identified by conducting soil profile analysis prior to fields being uprooted and replanted.

The Company implemented erosion control measures to combat the problem in all fields that were replanted which included, contours, soak pits, vetiver grass, oats etc. The operating policy of the management is to leave 30 m from water bodies/courses uncultivated, to retain its natural vegetation. This policy has been continued with felled areas in riverine areas being rehabilitated. Erosion control measures have been put in place to secure areas that are unstable and on steep slopes. The management has continually carried out rehabilitation of riparian vegetation river catchments as a way of conserving the environments while protecting the riverbanks and hence controlling erosion and flooding incidences downstream. prunings are left in the field as in previous years to improve organic matter, water retention, soil cohesion and fertility. Vegetative protection to prevent soil erosion at the edges includes Lemon grass, Agapanthus and vetiver grass. Sediment traps, spillways and barriers are dug in the gutters to reduce the velocity of water and prevent erosion from the roadways into farm field .

Natural resources

Apart from the indigenous forests there are no other natural resources of significance in the area. No mineral resources have been found on any of the estates.

Annual Environmental audits are done within our operation and environmental management and integration plans developed and incorporated with implementations. The plans have indicators and clear implementation timelines. Any new developments with anticipated major impacts are only implemented after Environmental Impact Assessment has been done and an elaborate Environmental management plan put in place. In addition, we work closely with regional/national and international bodies involved in environmental natural resources protection and promotions

About “ZONAL Construction and Handling Services”

Mission

Achievement of agenda eight of the SDGs locally and across activities to Promote sustained, gender inclusive and sustainable economic growth, full and productive employment and decent work for all across business operations sectors implementations.

Vision Statement

Effective and efficient Strategic Implementations achievement of agenda eight for sustainable Societal inclusive gender based social-economic growth and development of activities to Promote sustained, gender inclusive economic growth, full and productive

employment and decent work for all *innovative business solutions services provisions locally and across horn of Africa based on the UN and Global Compact* SDGs agendas and promoting its ten universal principals with respect to labour, human rights, environment and anti corruption by continuing to align and integrate with our day to day activities, projects and programs , business culture and our operational strategies , planning , coordination/liaison and implementations in our business operations sphere of influence for the broader development of the United Nation GSDGs, corporate sustainability governance and leadership .

What Sets Zonal Unique

The Company is managed by highly competent , well trained, experienced, dedicated, focused, committed , motivated, dynamic , self-driven and innovative professional team with great leadership and managerial skills , sense of entrepreneurship background skills in transforming economic growth and productivity of low income and marginalized communities with an in-depth understanding of community socio economic prevailing conditions and surrounding productivity opportunities to sustainable generations .

- We provide competent and innovative workforce solutions to clients to meet the challenges of the today's dynamic business and working environment.
- Our key deliverables are Efficient and effective out puts results measured on competency and team work.
- We have the right mix of resources to support clients maximize the efficiency and productivity of their workforce through our wide range of services.
- We always maintain excellent rapport with our Clients and flexible to accommodate busy schedules and short time notices in meeting their varying needs.
- We welcome ideas, suggestions and advices from clients/professionals/experts partners/critics and well-wishers.
- We constantly track suppliers movements , positions and monitor supply corridors and supply routes using convoy tracking devices to ensure on time arrivals with reduced lead times .
- Zonal is potential Business participant registered with UNGM and UN Global Compact actively contributing to the achievement of GSDGs annual COP contribution

ZONAL SERVICES

- Since the year 2013 Zonal Company is active participant signatory member of United Nations Global Compact – corporate sustainability initiative
- Women Empowerment Principles , Caring for Climate Initiative contributing to the broader development/achievement of the United Nations Sustainable Goals, Corporate sustainability governance and leadership.
- Zonal Services company attends high level national and global forums contributing to global solutions to sustainable development goals agendas achievements
- Zonal has Existing National , regional and global networking capacity
- *Zonal aligns and integrates day to day Business activities , strategies planning , coordination and implementations all in compliant Regional county and National Development Plan , global Sustainable Development Goals agendas , United Nations Global Compact universal ten principles, Women Empowerment Principles policies across business sectors services to promote socio-economic , environmental and governance challenges to sustainable development achievements*

Excel With Us



“ZONAL” seeks to set high standards in service provision through our professional, technical work force experience and expertise. The following attributes provides Zonal with an edge of professionally:

We are committed, communicative, flexible and competent in delivering our services to the best satisfaction of our clients/customers with reduced lead-times responses and just in time deliveries /accomplishment of services.

EXPERTISE AND EXPERIENCE

ZONAL SERVICES

Our diversified, multi-cultural expertise and staff have work experience and technical knowledge and skills required and had successfully implemented varying projects services in both private and public sector across its operational zones. Zonal has dedicated personnel who understand in depth different needs of the community as a fundamental component of our [business strategy](#). In a word, Zonal enterprise solutions services enabled to capture new opportunities and expand operationally and market coverage.

➤ *Integrated Solutions*

Zonal highly qualified Competent, dynamic and multicultural team of associates enabled “ZONAL” to provide effectively and efficiently wide range of professional services by assuring its clients’ needs satisfaction are met in time by competently filling existing rapidly growing business gaps in a country that is under transformation of post conflict recovery development state .

➤ *Commitment that counts*

We understand that implementation time and cost efficiency are key to succeeding in today’s competitive environment and first growing business world and We are committed to provide reliable partnership to our customers, supporting them in achieving their business goals by increasing their overall operational efficiency and output

Man Power and Technical Capacity

“ZONAL” maintains a strong team of experts with multidisciplinary specialization, complementary skills and diversified background and expertise and staff large base of freelance field staff that are called upon on various assignments on a short notice. Additionally, “ZONAL” has financial strength for business continuity/credibility and professional capacity to deliver innovative solution services across its operational areas/zones.

“ZONAL” offers a wide variety of services and products contributing to achievement of developed and sustainable generation in our communities by filling and responding to the demand of today’s first growing business and technology competently with reduced lead time, effectively and efficiently with sole objective of clients and customers satisfaction .

ZONAL” Main Activities areas if evolvement during the reporting period includes ;

- Supply chain operations activities and administrative support personnel performance (potential suppliers , transporters and warehousing ,distribution , retailers , procurement and Logistics team) and offer them capacity building and job trainings and identify additional training needs for them
- Ensured that shipments, vessel arrivals and containerized shipments are well coordinated with all involved contractors , superintendents , port authority and other agents working in the port and ascertain in time initiation and executions of customs clearance and subsequently commence discharge of vessels after receipt acknowledge receipt of bill of lading from master of ship and supervise discharge operations , Coordinate and Ensure the Collections, Organizations, optimizations, packaging and handling , transportations , follow up with consignee laboratories for samples arrivals, receipts acknowledgments and laboratories results and status , Commodities Data information ,consolidations and analysis using Data Supply chain operation System Application and share daily updates with management and stakeholders
- Prepared various reports on the daily supply chain operations, bottlenecks and propose possible solutions and share with stakeholders and management for decision making and planning purpose.
- Actively participated and lead in Cash & Vouchers (C&V) interventions Business activities development and implementations by coordinating and organizing meetings and field site visits with the stakeholders and act as a Logistics and procurement Focal Point for the C&V programme as potential implementing partner , Organise and Provide technical support and capacity building trainings to Cash Based Transfer Intervention implementing partners ,retailers , staff and stakeholders .Conduct Local Trade and Market Capacity Assessments , data collection and analysis,Conduct monthly Service providers (potential suppliers and CBT retailers , transporters and warehousing operations management contractors) performance and Supply Chain monitoring and evaluation services ,Tracking and reconciliation of cash and vouchers, redemption transaction services per retailer/location and beneficiaries , certification of potential service providers invoices and reports for rendered services ;
- Zonal Services Organised , coordinated and actively participated conference,meetings and retreats for supply chain operations and representatives including commercial traders and staff , clients and cooperating partners ,potential suppliers , transport and Warehouses management and retailers representatives to discuss and share broad range of supply chain operations information and SWOT analysis and acted as supply chain Unit focal point for commercial and business community engaged in the supply chain .
- Ensured to Coordinate with market actors and suppliers , business committee and management and their key staff to ensure conformity with meetings clients needs

demand ,corperating partners ,transporters , wholesalers and warehouse management reps. And othr relevant stakeholders in the supply chain operation and are updated on market status , pipline information , supply corrdiors and supply routes informations affecting the smooth flow of goods and services to the market to meets customers demand ,epected consignments , dispatches and distribution and procurement plans , market stocks availability , priorities , convoy in transit , incidents and solutions for supply chain operations improvements . Ensuring the health , enviromental , policies , quality and safety standard measures are maintained in the supply chain operation management to end users satisfactions

- Ensured weekly Consolidation and submission of Supply Chain information Monitoring Updates (supply corridors , suppply routes , number of check points along the supply routes, KMs in distace covered from source to delivery locations , transport costs , exchange rate , number of retailers/wholesalers/suppliers in the market , lead time , taxes and fees levied to perate in the market and along supply routes and corridors , supply and availability of local production/imported commodities in the market and in line with seasonal expectations , security disruptions in the market and along the supply routes and supply corridors , market prices of local production and imported commodities and other relevant supply chain information) and Zonal acts as focal point of Supply Chain .
- Zonal Services progressively Carried out Logistical coordination of *a large national and multi-country events* and workshops successfully handling high *complexities involved in* - organisations, planing , management and coordiantion)activities and achieved in time effective and efficient services deliveries to wide and diverse stakeholders from CSOs ,private and public sector and youth led innovative entrepreneurs' in complex , dynamic and demanding contexts where competence, information sharing and team work is mandatory for effective and efficient accomplishment of deliverable tasks and expected results achievements with reduced lead time in compliance with standard operating procedures and policies requirements - The following unique characteristics enabled Zonal Services to be the preferred company by large clients in operations analysts and logistics coordination of large scale events handling and management -*Excellent ahead of time planning is very crucial –this includes the amount of time it takes to plan large scale event of which communication is a key success factor for ensuring large scale events run smoothly from conception to breakdown , teams-preliminary planning of your team is imperative with complementary skills to make the event real time rewarding scenario , strong concept , clear objectives and aims will provide you with the information you need in planning smoothly , effectively and efficiently how many participants will attend the event , resources required for the event ahead of time and how big or size of the event which really makes the event planning , coordination ,management and implementation at ease , interesting and enable event stand out from the crowd .*

- ✓ *The concept and scope of event which will automatically give you an in-depth understanding of the event lifecycle to allow plan smoothly the process before , during and after the event like focusing on the event strategic planning based on the aims and objectives of the even program concept , this involves complex operational and logistics planning process to manages and coordinate multiple tasks and tight deadlines which includes-bookings, budgets, tasks creations, promotions, contracts ,insurances and licences, qualifications , recruitments and trainings , procurement and delivery services executions and exedra. Important components to include in the logistics to ensure the success of high level events and make it memorable for the event organisers and the event participants includes - Identifying suitable site for the workshop venue – The venue must be one that is convenient and satisfying in terms of space and ease of access, entry and exit in and out of the venue for the participants easy locomotion and comfort ability , also must determine and ensure the need for break out rooms and their capacities , they must be enough and adequate chairs , tables , flip charts ,internet access, items for the registration and materials for break outs groups and activities ,teleconferences , audio and videos system requirement , refreshments and catering service, emergency health facilities services , most compliance in terms of security MOSS , spacing and comfortability settings of the venue is very imperative ,venue organisers must be competent and potential to provide excellent high value event venue with required space with low cost, requirements and provisions of equipments with staff of the venue event organisers and even participants , checking the scope of international and continental regions delegates expected to attend the event and number of days of stay and event duration , meeting rooms/out group breaks . Venue doors, windows, floor, roof and windows must be excellent good condition with air conditioners and other necessary facilities , hotel bookings and accommodation arrangements and verifications for the event participants , associated high level delegates and list of their detailed contacts , Where transfer of the participants from venue to accommodation or from airport to event venue site is necessary must check incoming participants numbers , flight schedule expected time of arrivals and date of expected start and end date of the event to ensure ground preparedness of transport services is ensured for readiness to pick and drop participants during the event days ,registration list for all the participants of the workshop detailing their contact details , email addresses , telephone numbers and accommodation areas for participants ,provide the participants Contact Details of the event organisers for communication and information flow and sharing between the event participants and the large scale event organisers team .*
- ✓ *operations finalization and event delivery team briefing process just few weeks before the event which is called the hectic and exiting approach hours, managing and coordinating your team , resources and responding to any additional unexpected situations and ensuring things are smoothly ongoing as per the plan during the event delivery days , soon after the end of the event start Clearing the event, evaluating, reporting and finalizing all accounts as well as payments, collect learning's promptly after the event and important to expect thank you sent out after big event rap up . Map the large scale event lifecycle planning on to your timescale and establish a time table of event planning which is a crucial central document that supports with straight forward planning and comprehending how individual planning tasks fits*

together for large scale events of at least 500 attendees plan and utilize resources and budgets accordingly thus avoiding overspending and delays. Detailed event planning – this includes strategic, systems and operational planning

- ✓ *Large scale event planning timetable should reflect the following earlier enough before the the event planned kick off day at least 9-12 months earlier ; finalized concept ,budget set and reviews , initial and updated risk assessment , venue booking , team set up , professional booking of event main aspects , event marketing and advertisement , venue layout decision making , program creation ,transport , catering , site services and equipments booking and confirmations ,set up and identification of emergencies procedures , provide and confirm event merchandised –passes and programs , gift bags etc , providing security arrangements for the event , organization of an onsite run through /team visit , collections and making final payments , check and confirm all booking and services are in place , event walk through and setting up the event .*
- ✓ *Human Resources Management – Leadership Capability to coordinate ,control , supervise , guide , mentor , coach , motivate, appraise and manage the Logistics operations team with competence , team work and information sharing to more effectively services deliveries achievements with innovative solutions to address complex and dynamic logistics challenges. Regular Monitoring and follow up with Logistics staff to ensure in time accomplishments of assigned activities and compliance with necessary procedures. organizing and conducting capacity and skills development Trainings ,on job trainings and identifying of additional training needs to retain valuable productive team , creating team with complementary skills , Taking corrective measures in the event when team member could not perform functions efficiently and effectively , recommend to management solutions for improvements , New staff members orientation , participation of talent staff recruitment process,*
- ✓ *System planning - For large scale events you will also need manage ,control and ensure to have an appropriate system in place which is mainly comprised of the following ;records keeping , data storing and sharing , data protection , tracking tasks , bookings , registration, ticketing , refund and cancellation policies , budget monitoring which includes expenses claimed , communication system with the event teams and stakeholders , payments making , cash handling and reporting system tools to effectively and efficiently facilitate smooth event running and set objective goals accomplishments .*
- ✓ *Procurement and supply chain management –Planning , Management, control , coordination/liaison, supervision and implementation of Procurement service deliveries experience from identifications of needs and requirements analysis, market and cost value analysis, potential suppliers identifications, suppliers negotiations and contracting , suppliers performance management, delivery confirmation and inventory control to supplier relationship management,*

compliances with procurement ethics & policies and effectively delivered procured goods and services in timely fashion with reduced lead time. Proactive planning, coordination, management and controlling the supply chain activities physical and information flow of goods and materials effectively and efficiently to maximize customer value and achieve sustainable competitive advantages. Contributing effectively to the supply chain process in new products developments and introduction to the market, sourcing of potential service providers to perform business functions in transport and distribution, purchasing and procurement, warehousing and inventory management and recruiting of talented personnel , Adapting total quality management approach as a SC process to maintain and improve the quality goods and materials procured , received , stored and delivered to end users and achieved strong and long lasting customers relationship and satisfaction. Maintaining adequate information flow with supply chain partners for subsequent achievement of well coordinated long term plans and controlling day to day flow of goods and materials along the supply chain, conducting SC capacity assessments of local markets and traders and data collection, analysis and submissions. Constant monitoring of Supply corridors and supply routes and associated data collections, consolidations, analysis and updating and effectively responding to vulnerable humanitarian aid beneficiaries, expanding local trade and market capacity, creating additional investment opportunities and improving local economic power of supply chain and procurement operations partners and stakeholders

- ✓ *It's human nature that no matter how well we plan for the event , there will always be some aspects that are beyond our control and therefore , its imperative for emergencies planning situations and how to respond this situations , large scale event organizers must inform and liaise with local emergency services providers and make an early heads up communication with them in the planning stages which will give them the opportunity arrange any provide support required for the unexpected.*
- ✓ *Contingency and preparedness planning –Contingency planning is inevitable for every activity undertaken regardless of the scope of work due to unpredictability's , therefore counted on plan B becomes part and parcel of your planning .Some of the least in including contingency planning includes the following ;finances in case of over budgeting , personnel in case staff and do not turn up for the event due to unpredictable circumstances , venue in case of unforeseen change of facilities or loss of venue ,it's also important to back up all important event planning files and data records and always preparing for the worst case scenarios so as to enable complete preparedness ahead of the event .*
- ✓ *Large scale event emergency planning –this is very vital aspect in order to be prepared well, defining all possible worst case scenarios and courses of actions to be undertaken in case of possible emergency occurring and incorporated in planning including risk assessment , evacuation plan , venue walk through and venue fire procedures , event organizers will also need to includes their planning to recruit a*

critical incident manager for large scale events who will be responsible for emergency planning and incident management which includes –natural disaster , serious accidents and death , infectious illness , fire , missing persons , unforeseen circumstances like public strikes , power cut off

- ✓ *Event and team management planning –it's important to carry out venue walk through , rehearsals and run throughs at least two weeks before the kick off of the event from set up to break down to identify any missing tasks that require completing action in order to be fully prepared. Planning of event teams to support during the event lifecycle, teams are normally composed of two groups -planning team responsible the planning and delivery of the event and recruiting the event delivery team and delivery teams recruited to support delivery of the event .It's important to structure this two main teams in to smaller groups focused on specific tasks with team leader to effectively manage the entire event team. Important to list down every task that needs to be completed and separate task lists for each main aspect of the event and assign each with strict deadline and responsible team member and mapped along central timetable to oversee how everything fits together , excellent knowledge and use of excel sheets is vital for tracking tasks and information storage creating separate spread sheets in one work sheet for every aspect of your large scale event e.g budget, timetables and attendance etc.*
- ✓ *Progressive experience in Business process Reengineering, management and leadership skills for better planning, management and implementation. The aim of business reengineering is for better services deliveries. It results better reporting and management of business SWOT and bench marking.*
- ✓ *The organization personnel and management possesses Extensive computer software technology knowledge of MS Office (Word, Access, Excel, PowerPoint) , knowledge of quality control, data and information validations, statistical analysis methods and web based IT applications and systems for Operations support service deliveries with analytical organizational skills and the ability to analyze and interpret and present large amounts of information and data and generate reports*
- *Zonal Service Spearheaded operational , technical and strategic leadership skills in planning ,management and administrative support services provisions , coordination/liaison, networking with wide and diverse stakeholders , Monitoring and evaluation, data collections and research information, Data tracking, reports generations and business activities implementation of*

development projects and maintaining compliance of projects standard operating procedures ,policies and funded donor requirements with innovative high technology service delivery solutions that promotes socio-economic, environmental, governance, human rights and transparency challenges to implementation of sustainable development goals in marginalized and indigenous communities in the horn of Africa

- General trade and commercial activities - import , export , produce , sell , distribute , supply and buy all kinds and types of goods and services in domestic , regional , national and international markets
- Various Construction , rehabilitation and maintenance Works Services –concrete buildings ,roads , wells , boreholes and water catchments , canals and lakes , feeder roads , airports and airstrips , ports , institutions , residential states , business premises and related rehabilitations and maintenance services works
- Cooking and catering services - exceptional larger scope of business services of hoteliers, caterers, restaurateurs, food suppliers, proprietors of inns, camps, canteens , lodges , motels , coffee houses , team rooms and refreshments rooms , licenses victuallers , proprietors or ball rooms , hall conference centers , theatres and recreations place and confectioners
- Carried on business of all sanitary works , taking over contracts of cleaning of homes , offices , guest houses and buildings , office blocks , go downs , warehouses , prefabs , carpets , floor , telephones , polishing, upholstery , supply and offer services for garden maintenance , interior designing , partitioning , florists , fencing of farms and gardens , fumigation , security and caretaking services Carry out and undertake the business of high precision electrical engineering works including fine machining , gear cutting , tunning , shaping , fabricating , welding , fittings and other tools and implements required for industrial , commercial or domestic use , and also carry out business of manufacturing metallic and steel products such as windows and doors , windows frames , security grills , burglar proofing , steel gates and metallic containers .
- Carried out activities of Distributing , buying , selling heavy engineering machines , dealers of heavy machines , spare parts , repairers of turbines , tractors , maintaining and offering services of repairs of all electrical appliances and otherwise dealers of industrial , agricultural , mechanical , commercial , domestic and all types of machinery , power pack , machinery , tools , instruments , implements , spares , apparatus , materials and equipments
- Carried out general building and construction works , contractors of both building and roads , to construct roads , to offer building, renovation and constructions services in domestic electrical wiring , tiling , plumbing , electrical works , consultants' in electrical ,engineering works and to build ,maintain ,alter , enlarge , pull down , remove or replace any buildings , mills , factories , offices , to carry out joinery work , engines , walls , fences , banks , dams , sluices , or whatever courses to clear sites for the same , and to carry on the business of merchants and dealer in stone , sand , lime , brick , timber , hardware and other building materials and requirements , rail ways lines and to undertake the business of high precisions engineering works , indicating fine machining , gear cutting ,screw cutting , tuning , shaping , fabricating , welding , fittings and other tools and implements required for industrial , commercial or domestic purposes

- Set up / installation of Mobile Storage Units -prefabs , emergency mobile storage units , energy solar system services solutions , dismantling and maintenance services of the same
- Transportation , storage and Handling Services – in land , overland , ocean and air transport services , offloading , loading , packaging and breaking bulk , repackaging and reconstitution , stacking service deliveries , storage and management of both food and non food items , inspection and inventory taking services
- Provision of Cleaning , gardening , cooking , laundries and catering services in private and public sector
- Agriculture and agro processing and related value addition business support services -This includes establishment and use Green Energy for Power and for use in Irrigation Systems and other processes-Working with youthful farmers (women/men) to increase production and youth employment and incomes by establishing irrigation based horticulture farms and plots for production of vegetable crop varieties , help the youths establish vegetable farms and provide farm inputs and training in modern agricultural methods/techniques, market information in real time using M-Farm Mobile Phone Application, successfully used in Kenya and other parts of Africa.
- Post-harvest management and efficient storage, transportation various interventions utilization, including establishing efficient refrigeration mechanisms and cold storage and delivery. Making arrangement with buyers before harvesting our crops; it is safer and cost effective. Provide specialist complementary; conduit, consulting, contracting and facilitation services delivered using effective and efficient, world-class communications tools to help the youth's access markets
- Supply chain management services –retailer/whole sale /suppliers /transport/warehousing /tendering /clearance services , supply routes and supply corridors monitoring , market prices , exchange rate and cash flow , local production vs imported food commodities availabilities in the market , supply chain data collection and related Business intelligence and analysis service deliveries Start ups /small scale Business Operations Management and related support capacities Assessment Services –recording keeping , quality control , inventory taking , creating and maintain customers , customer satisfaction services , techniques on time response to clients needs with reduced lead-time
- Plumbing , waste disposal and hygiene upkeep , electricity installations and maintenance services
- Carried out business of general supplies in stationary ,office equipments , suppliers of computers and accessories sellers , printing and publishing materials , distributors of accounts books , envelops , papers , pens , pencils , inks , arts and crafts equipments ,cards , pins , staples , type writers , electronic type writers and computers , duplicating machines , printing and calculating machines , security printing machines , tape recorders , office equipment and requisites of all kinds and types and to repair , service and maintain computers , printers , fax machines , type writers , copiers , duplicating machines , and requisites of all kinds and types
- Zonal Services carries out Cash Digital Based Transfer Activities implementation -Zonal company is Mainly undertaking Cash Based Transfer projects - electronic voucher and cash based transfer intervention benefiting humanitarian aid beneficiaries under WFP Somalia –Operation of Strengthening food and nutrition and enhancing resilience's project , provision of services in the form of electronic voucher benefits by means of dimmable e-transfer cards in exchange for food commodities based on beneficiaries choice of preferences with maximum ceiling prices , regulations of terms and conditions services , monthly services proforma invoice preparations for the electronic voucher transfers with monitory values and transactions , verifications of beneficiaries and alternate

data information and specimen procurement , supply delivery and distribution through redemption services . Application tools and activities includes POS -point of sale terminal link flex machines , recording and capturing of transaction in the POS machines ,e-transfer cards verifications and validations , electronic synchronization of data transactions , display of sign boards indicating e-transfer cards transactions and services available ,storage , handling , storage and management of CBT tools and equipments like solar panel ,rechargeable and portable battery , biometric / finger print scanners and POS devices , cables and accessories , mobile sim cards for the POS data connectivity and topping up of sim cards to limit full threshold , capacity building training for CBT staff , retailers and digital financing cash /voucher based institutions ,power supply trouble shooting services for equipments like solar panels and POS devices , food and non food items quality control and safety , handling , storage , management , monitoring and evaluation services in respect with Cash based transfer services , conducting market prices assessments , conducting cash based transfer market infrastructure assessments

- Call center support services –beneficiaries data collection and warehousing , verification of beneficiaries/entitlements , handling of complains from beneficiaries , beneficiaries mobile credit card topping up services , assessments , monitoring and evaluation services , vulnerability analysis and markets assessments Digital Finance Cash Based transfer accountable , transparent and real time based business transaction that is fast , effective and efficient system that ensures beneficiaries and clients are not exploited , ensure entitlements handover and delivery service to intended and right people , at right place in the right time contributing to sustainability and developing resilience's ,this services also empowers vulnerable Beneficiaries since they are aware of their entitlements and no chances for diversion and exploitations, easy to monitor progress and creates community resilience's against shocks like loss of assets , suitable in protracted recovery and rehabilitation responses and interventions in post conflict environment with vulnerable communities relying on humanitarian aid beneficiaries , ready service delivery for beneficiaries and clients regardless of their location , biometric based registered alternates for clients and beneficiaries from the same households can benefit from this system without delay
- Business Intelligence Consulting Services: management needs to make informed decisions; we provide first hand information to clients. Zonal believes in delivering the right information to the right resource at the right time that will help our customers make valuable decisions for their business.
We understand every customer's needs are unique and it is highly critical that the business intelligence solutions that we develop are aligned with their business and needs. Our BI consultants carry out a complete assessment and understanding of business process by meeting with your key decision makers and studying clients internal and external systems to device a roadmap for your company's business intelligence solution.
- Data Mart & Data Warehousing services – Zonal Company performs data analysis, profiling and system study to architect dimensionally modeled data warehouse using SQL Server. Data warehouse being the backbone of any business intelligence solution needs to be built with careful consideration and needs to evolve as your business grows. With data coming in from various disparate sources and in various forms, company consults and liaison with a Data Warehouse team with deep understanding and experience of having worked with the source systems as well, thereby enabling faster and effective development of the data warehouse. Our consultants and developers build a data warehouse that is developed in-line to meet not just for current business needs but also for future needs. This is achieved by thoroughly studying your systems, business needs and understanding what we /you as clients are trying to achieve with the data warehouse and what reporting and analytical capabilities you expect of it.
- Economic inclusion and empowerment of women Zonal Services had integrated its business process activity pilot project sensitize , mobilize and pioneer for inclusive inclusion of business in women empowerment to increase their participation and mainstreaming in the social-economic development activities in the private sector to advocate and advance for their position in decision making , policies formulations and due diligence establishments, employment and decent works provisions at the market place , work place and in the community , Zonal Services is Strong Public sector judicial and rule of law to support, protect, advocate for women empowerment and economic growth , human rights protections and against rampant abuses women and girls are facing and to pass bills in the parliament to enforce equal justice , prosecution for women human rights offender and protection implementation actions and establishment of advocacy with the right stakeholders

including private sector business community to equally contributing to women empowerment, equal respect and consideration at work, home, market and community paces. Eradication of cultural and negative stereotypes associated with women and establishment of strong institutions for their rights protection and legal empowerments advocacy resulting gender balancing and women empowerment affecting both public and private sector to improved and equal participation and inclusion of gender focused women, girls and youth in the social, economical and political developmental activities at work place, market place and community level to enable them increase their productivity, income and realise their potential.

- Zonal Services has constructed an existing collaboration and built alliance and partnering with Public sector, private sector, and civil society organization to promote common cause of interest, aims and objectives commitment actions for the public arena benefit and to address social, economic, governance, transparency, accountability and human rights challenges and resulted in a more effective collaborations actions between stakeholders and consequently sustainable partnerships is built and promoted as a result of cross sector collaboration construction. cross sectors alliance building which allowed partners to more effectively achieve and maintain greater sustainable solutions for common importance commitment and synergy thus achievement of common goals and objectives in a more effective sustainably, alliance building and partnerships also allows social problems addressed jointly as a result of mobilizations, sensitization, coordination and implementation engagements from cross sector actor collaborations and benefits included information, data and research information sharing, network building, knowledge and skills transfer, coordination and liaisons with in the partners and with the community stakeholders for common commitment issues for the public benefit, funding opportunities for capacity building for partners sectors actors and long term contractual agreements to addressing social, economic and political challenges facing the indigenous and most vulnerable communities, establishment of constitutional governance and structure systems increased gradually confidence among the collaborating partners and thus a positive drive towards sustainability since it provides clear guidelines, procedures and processes to make collective decisions and achieve consensus and plan actions with clear definition of how decisions will be made, roles and responsibilities of each partners and the mechanism of coordinating actions and the accountability line within the initiative. increased recognition and respect of difference among partners. It also brought s in clear understanding of cross sector thematic areas of engagements, capacities and limitations of each actor engaged in the collaborations to commonly contribute to the achievement of the common values and goals, cross sector alliance building and partnership emergence and sustainability of collaborative initiatives is promoted by leadership role model displayed by actors representatives and therefore it importantly exhibited constantly with consistency the ideals and values underpinning the mission of the initiative, maintaining collaborative relationship spirit, perseverance in convening actors, achieving agreements among the partners, advancing the initiative mission in the public arena, use of convening language which was fundamental to encouraging commitment among partners, legitimacy aspects of the convening actor became paramount, their roles in the sector they represent, their defined functions in the construction of cross sector partnerships, clear and common cause among partnering actors became very important for addressing social, economic and political context challenges, generating*

interest , resources and commitment to action from civil society , public and private sector became fundamental .

Features of Zonal Data Warehouse Development services

- Scalable - A data warehouse that is scalable and grows along with your business
- Data Accuracy - Highly accurate and consistent data helping you with first hand information and enable you make better informed decisions
- Consolidated view - One single place to store the data from all disparate sources and in the right format to support Business Intelligence solutions
- Quick to respond - Minimal response time for queries enabling faster decision making
- Self-service - Supports self-service BI with little or no dependence on IT

Mobile BI Development Services-Digital /Mobile devices and business intelligence is rapidly growing hence enabling smooth , effective and efficient and real time, transparent , accountable and fast transactions on the way , at home ,work , farms , villages and cafeteria while making sure users to make informed decisions on the road. Top level executives can now monitor key performance indicators on the fly using their respective mobile devices and act immediately as required., helping and supporting enterprises to stay top of their respective verticals by empowering them with information and analysis to make decisions faster than ever by delivering business intelligence to their mobile devices. Dashboards, reports, charts and alerts are designed in a way to be presented on mobile devices to make quick and informed decisions in real time, thereby helping organizations and clients to increase the efficiency of their field executives to maintain zero response time for customer queries.

Zonal delivers mobile business intelligence as web apps and as well as native apps on windows phone, iOS & android platforms. Zonal respects and honors with utmost confidentiality client's security and confidentiality issues that worries clients and partners; we put utmost importance to secure data.

Our development teams are highly experienced in building encryption and strict authorization components which are impenetrable for client's applications.

Data Visualization Services-Designing and developing reports that are accurate, informative and at the same time visually appealing and easy understanding.

Data visualization services for businesses, enabling companies to monitor their entire business performance on a single screen, in an easily understandable format. We help companies track their KPIs with rich, visually appealing graphical presentations of their data , Our right mix of consultants, developers and analysts make sure clients get all the required information in one place in a visually appealing and easy to comprehend format.

We serve clients based on the understanding how important it is for everyone in the organization to access insights and work with the same version of data and at the same time we also realize the fact that each user is unique and their needs varying. We use dashboards that are tailor made to clients needs.

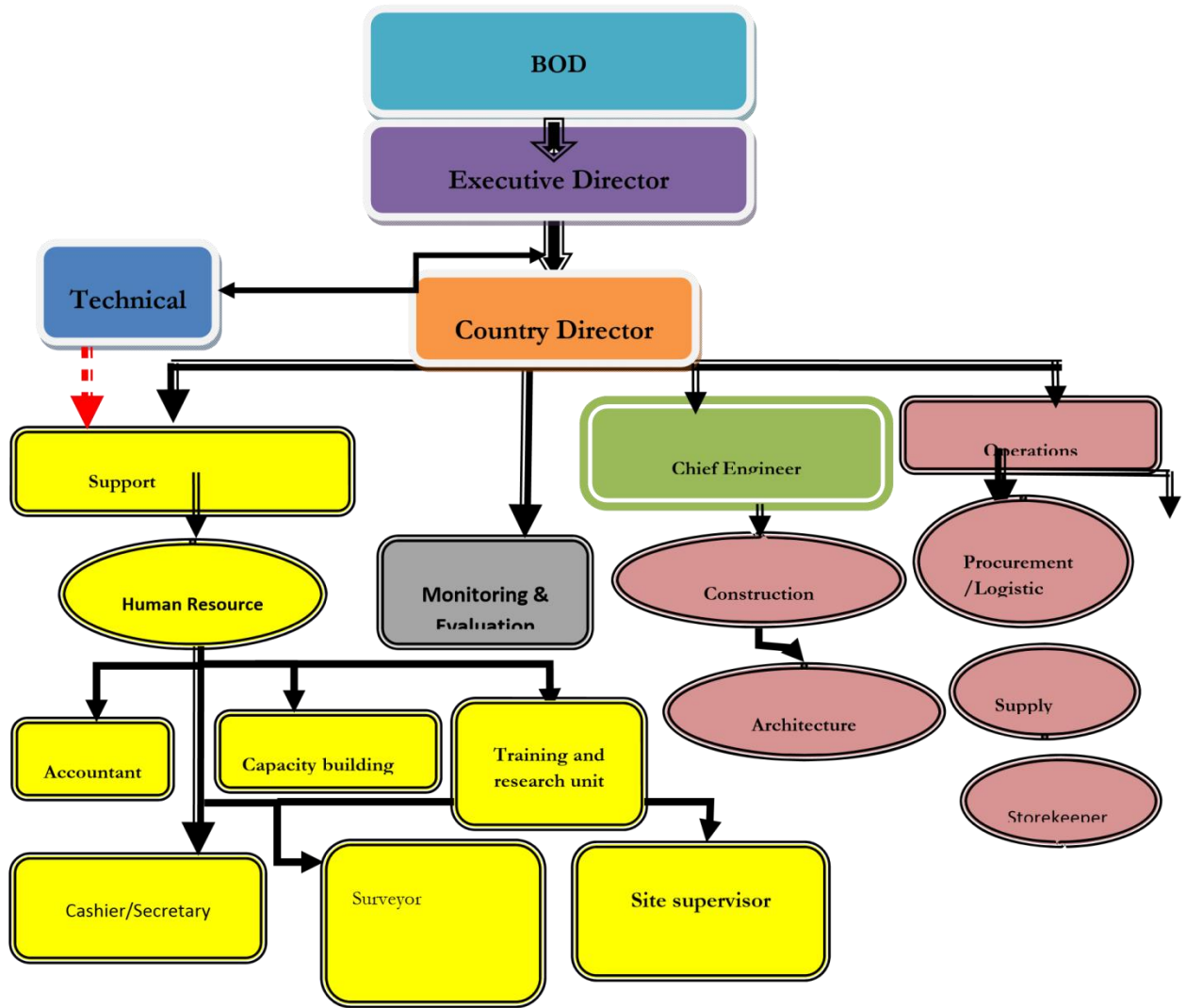
Our personalized dashboards adhere to the varying needs of each user.

Our extensive experience in building Dashboards means, you can go from data to dashboards in real quick time.

Training services

- Resilient and Responsible Supply Chain Management trainings –request for purchase , tendering / quotations , procurement , pipe line and in transit commodities follow up , receipts , warehousing , dispatches , transportation and delivery , reporting and documentations , market forecasting forecasting and foreseeing risk preparedness and management .
- Market and Vulnerability assessment and analysis trainings – market prices , stock availability , supply routes selection , market and clients needs , consumption and lead times , barriers to supply regulations , data collection , data analysis , data warehousing , seasonality's variations affecting market , local production and imports goods and services data collection , reporting etc ..
- Conducting Cash transfer digital financing system Assessments trainings - e.g related physical infrastructure, payment infrastructure, security and cost to deploy and the policy environment.
- Retailers/entrepreneurs –Capacity and technical skills Building - Small scale and start up Business management - Good Warehousing practices , commodities handling and management , inventory taking , inspection and quality control , hygiene upkeep and relating documentations trainings
- Conducting Cash transfer and Digital Financing –Institutional technical capacity building and preparedness and related environmental policies trainings –.
- Provision of Trainings to Retailers/wholesalers/suppliers on effective and efficient delivery of cash transfer Digital Financings System
- Call Center Services Training -
- Data Warehousing –BI services

Zonal Construction and Handling Services Company -Management and Personnel



The company Management Organigram tree is illustrated below with BOD been the highest organ and final decision making body of the company

.....End.....