

# ESER

2010-2015

[www.eser.com](http://www.eser.com)



**ESER TAAHHÜT VE SANAYİ A.Ş.**  
ESER Contracting & Industry Co. Inc.

Eser is listed one of the top 250 international contractors by Engineering News Record (ENR) in USA, with its international activities.



# ENR THE TOP 250

ENR THE TOP 250 INTERNATIONAL CONTRACTORS The Top 250 List

RANK  
2014 2013 FIRM

1	1	GRUPO ACS, Madrid, Spain <sup>†</sup>
2	2	HOCHTIEF AG, Essen, Germany <sup>†</sup>
3	3	BECHTEL, San Francisco, Calif., U.S.A. <sup>†</sup>
4	4	VINCI, Rueil-Malmaison, France <sup>†</sup>
5	5	FLUOR CORP., Irving, Texas, U.S.A. <sup>†</sup>
6	6	STRABAG SE, Vienna, Austria <sup>†</sup>
7	7	BOUYGUES, Paris, France <sup>†</sup>
8	9	SKANSKA AB, Stockholm, Sweden <sup>†</sup>
9	10	CHINA COMMUNICATIONS CONSTRUCTION GROUP LTD., Beijing, China <sup>†</sup>

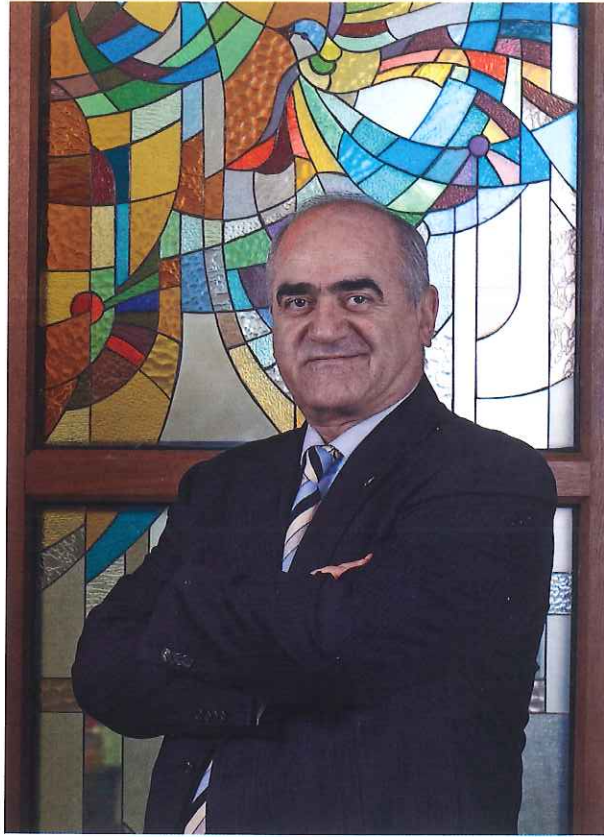
176

182

**ESER CONTRACTING AND INDUSTRY CO. INC.**, Ankara, Turkey<sup>†</sup>

# MESSAGE OF THE CHAIRMAN

## MESSAGE OF THE CHAIRMAN



It is obviously a big challenge for companies to operate in an ever globalizing world. With the economic environments changing more frequently than ever, opportunities come and leave faster than any time before.

In such a challenging world, we have managed to bring the expertise we have grown in our home country Turkey, and take the light of engineering and science to other countries we operate in. ESER has operated successfully in over fifteen countries up to today, bringing most professional approaches to important construction projects.

We believe that our success depends on not only our experience and know how, but also our ability to combine a professional approach with local understanding. This has carried us to success in our projects in the Middle East, Central Asia, Eastern Europe and Africa.

Since its establishment, ESER has completed numerous projects internationally, including dams, roads, railways, infrastructure systems, power plants, industrial facilities and buildings. We are always motivated to see how the lives of the societies are improved with what we build.

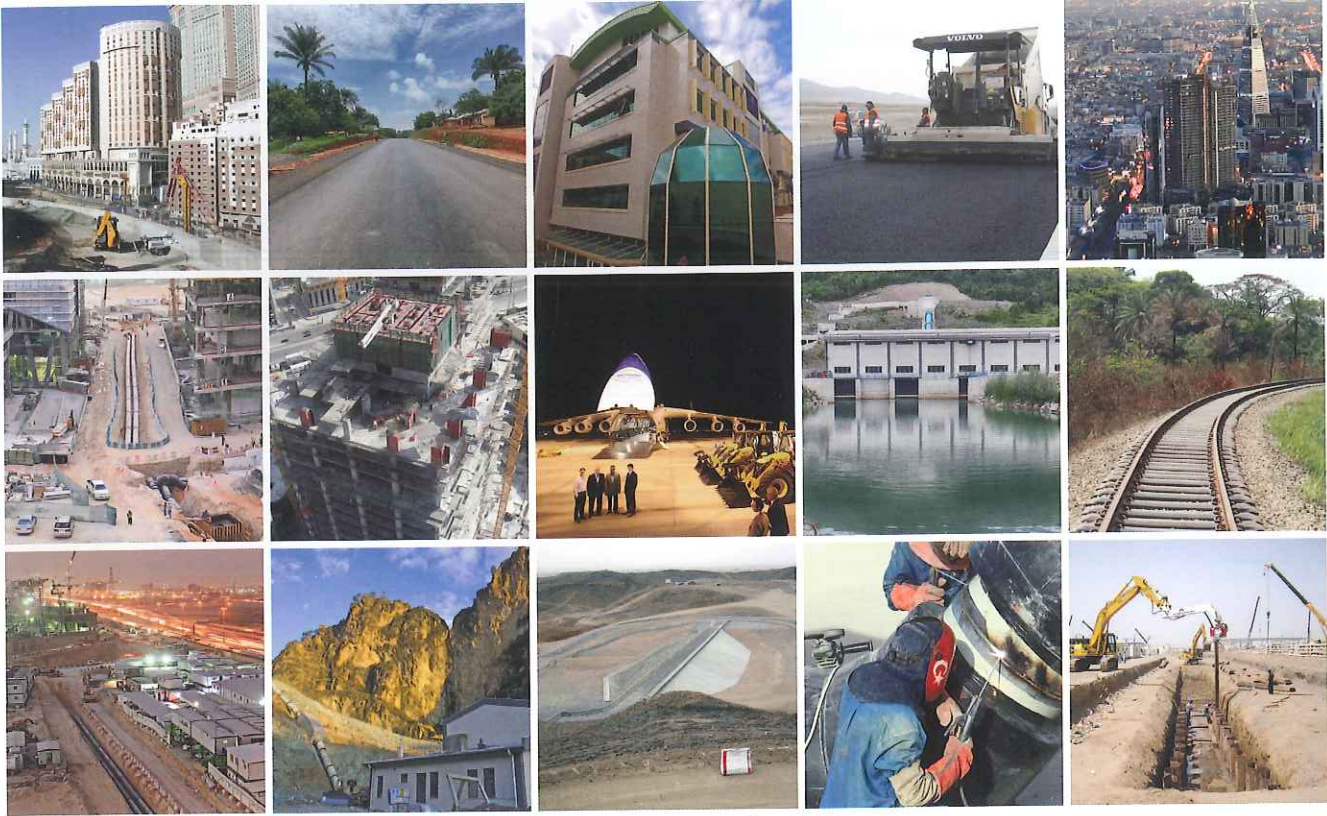
We believe that our global approach to professionalism, combined with a local understanding will always keep us in different positions than our competitors in the eyes of our clients. We will continue keeping our scientific and engineering approach in our projects, and operating under the main principle of the sustainability of world resources.

**İlhan ADILOĞLU**  
Chairman and CEO

# GENERAL INFORMATION

## GENERAL INFORMATION

### Eser Contracting & Industry Co. Inc.



Since its establishment in 1986, ESER Contracting and Industry Co. Inc. have been active in the construction of infrastructure, building and industrial projects. Together with the expertise and experience of its executive team, ESER has a wide experience in the international construction sector. The major markets of operation include Turkey, as well as the regions of Central Asia, East Europe, Middle East and Africa.

The company has completed numerous constructions: Dams, hydropower plants, industrial plants, office buildings, water distribution networks, environmental projects, and roads & bridges.

Considerable numbers of these constructions were executed abroad, in countries such as Saudi Arabia, Sudan, Afghanistan, Kazakhstan, Nigeria, Cameroon, Kenya, Turkmenistan, Azerbaijan, Algeria and Libya.

ESER follows new technologies and developments and trains its staff regularly with courses and seminars. With a well developed Quality Management System and Procedures, the firm is among the leading construction companies of Turkey.

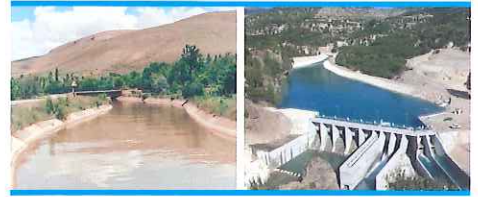


# ACTIVITY AREAS

## ACTIVITY AREAS

### HYDRAULIC WORKS

Dams and  
Hydropower Plants  
Irrigation and  
Drainage Systems



### TRANSPORTATION

Highways and Motorways  
Railways and Metro Systems  
Bridge, Viaduct and Tunnels  
Ports  
Airports



### URBAN INFRASTRUCTURE

Water Supply Systems  
Treatment Plants  
Urban Systems  
Landfills  
Decontamination and  
Cleanup of Hazardous  
Waste Pipelines



### INDUSTRIAL

Industrial Plants  
Energy and Power Plants  
Petrochemical Plants  
Depots  
Telecommunication Facilities  
Energy Lines



### BUILDINGS

Green Buildings  
Residences  
Commercial Buildings  
Military, Medical and Educational  
Facilities Tourism, Cultural and  
Social Facilities



# INTERNATIONAL OPERATIONS

## INTERNATIONAL OPERATIONS

### IRAQ BRANCH

Kanarway Dam Consultancy

Dahuk / Solav Intersection Design

### AZERBAIJAN BRANCH

Azerbaijan Railways Consultancy Services

Masalli Potable Water Project

### LIBYA BRANCH

Sirt-Benghazi High Speed Railway Construction Supervision Project

### CAMEROON BRANCH

Foumban-Manki Road Works

### NIGERIA BRANCH

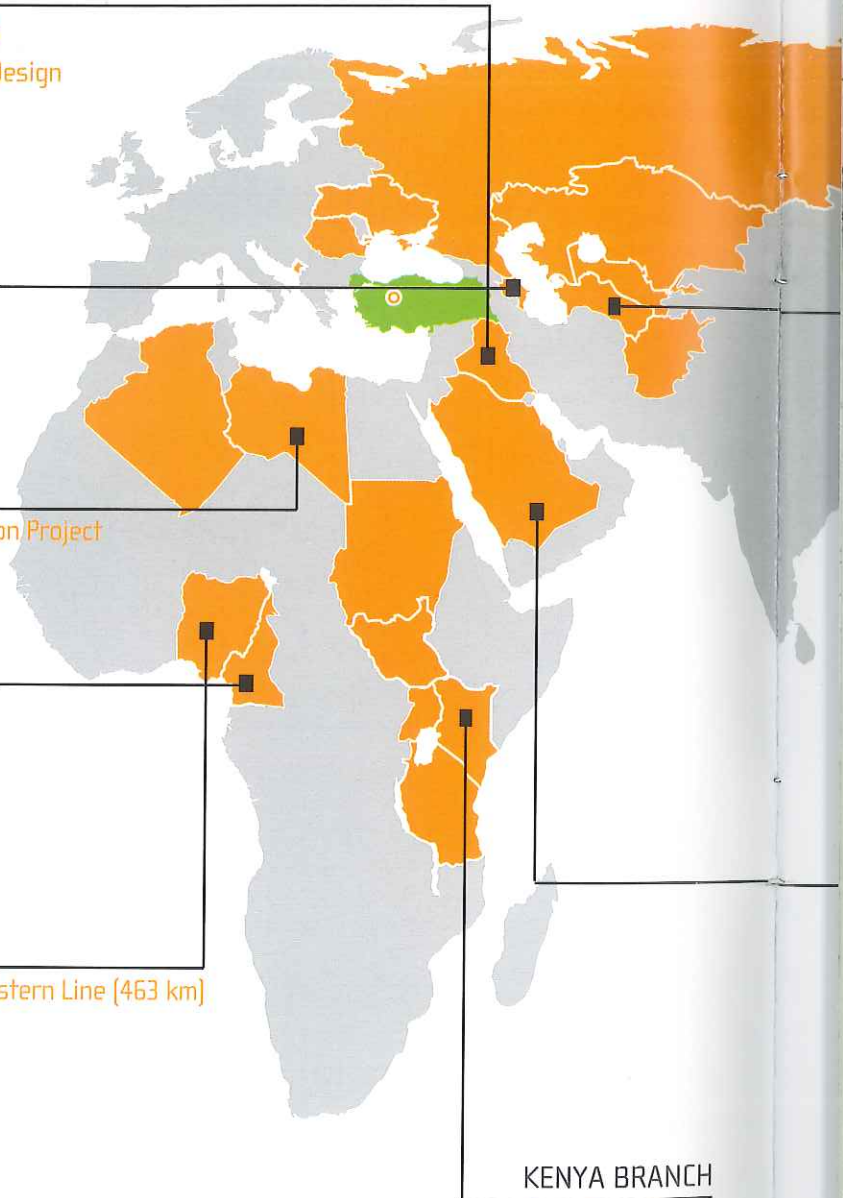
The Rehabilitation of Railway Track Network - Eastern Line (463 km)  
(Port Harcourt to Makurdi)

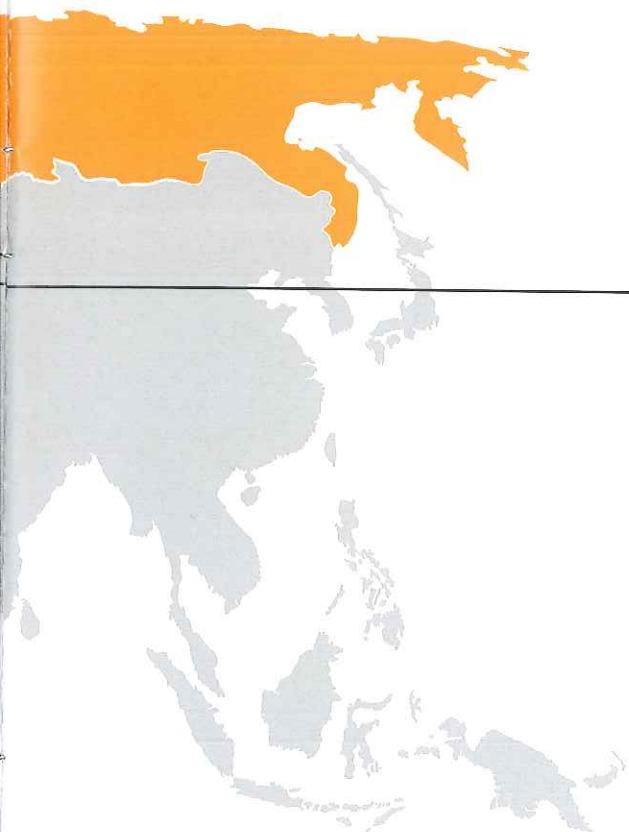
Asphalt & Crusher Plant Investment

Osun State Asphalt Works

### KENYA BRANCH

Road Consultancy





#### TURKMENISTAN BRANCH

Turkmenistan Road Construction Works  
VIP Restaurant and Guesthouse

#### SAUDI ARABIA BRANCH

Olaya Towers  
King Abdullah Financial District Infrastructure Works  
Jabal Omar Development Project Infrastructure Works  
King Abdullah Economic City (KAEC) Infrastructure Works  
KAUST University Utility Network and Infrastructure  
Jeddah Urgent Stormwater Project  
Jeddah Stormwater 4 Dams  
Jeddah Stormwater Dam and South Channel

# MACHINERY & EQUIPMENT

MACHINERY AND EQUIPMENT (1500 UNITS – 160.000.000 USD)

## Excavation Group

- Bulldozers | 15
- Crawler Excavators | 67
- Wheel Excavators | 23
- Wheel Loaders | 35
- Back hoe Loaders | 23
- Crawler Loaders | 1
- Trenchers | 1
- Motor Graders | 12



## Transport Group

- Rock Trucks | 10
- Dumper Trucks | 133
- Trailers | 21



## Paving Group

- Asphalt Pavers | 11
- Distributors Truck | 6
- Road Sweeper Truck | 1

## Compacting Group

- Vibratory Rollers | 23
- Tandem Rollers | 19
- Rubber-Tired Rollers | 11
- Plate Compactors | 60
- Utility Compactors | 11



## Drillers and Crushers

- Hydraulic Drillers | 7
- Hydraulic Crushers | 18

## Compressors

- Compressors | 14

## Crushers / Screens

- Crusher – Screening Plants | 7
- Mobile Crusher Plants | 14
- Mobile Screens | 7



## Road Plants

- Asphalt Plants | 4
- Mechanic Plants | 6
- Emulsion Plants | 1

### Concrete Equipment

- Concrete Batching Plants | 7
- Mobile Concrete Pumps | 5
- Stationary Concrete Pumps | 2
- Trans mixers | 20
- Cement Transport Trucks | 4
- Concrete Border Machine | 1
- Shotcrete Machinery | 2
- Vibrators | 60

### Traffic Safety Machines

- Guardrail Pile Driver | 2
- Road Marking Machine | 1

### Service Vehicles

- Pick-up | 60
- 4 x 4 Jeep | 40
- Cars | 60
- Minibus | 30
- Midibus-Autobus | 30

### Auxiliary Machines

- Generators | 90
- Mobile Light Plants | 60
- Weighting Machines | 25

### Others

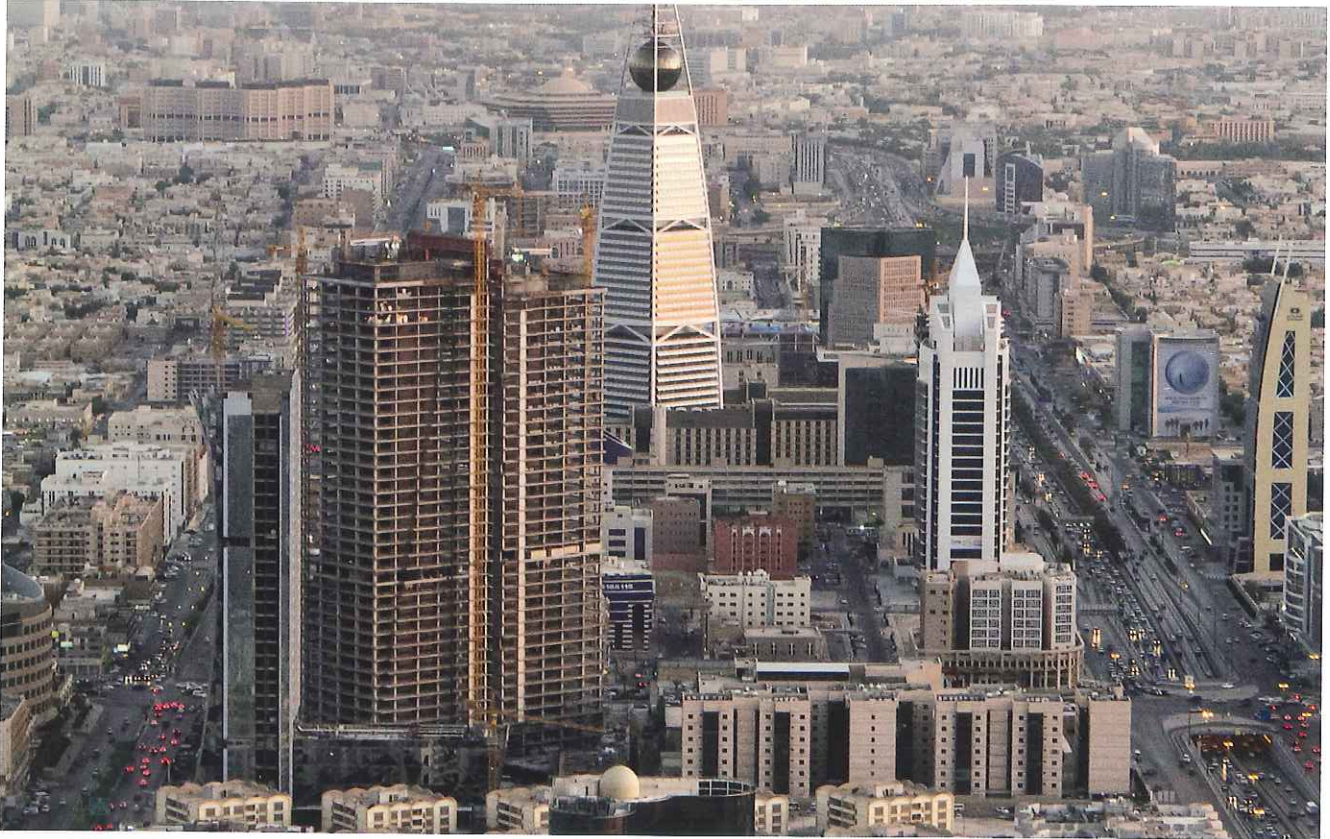
- Cranes | 15
- Mobile Camps | 182
- Prefabricated Camps | 50
- Laboratory | 5
- Skid Steer Loaders | 45
- Forklifts | 3
- Submersible Pump | 46
- Bar Bending Cutting Machine | 30
- Tower Cranes | 6
- Sprinkler | 11
- Surface Drilling Rigs | 6
- Topographic Measurement | 40
- Pile Drilling Ring | 1



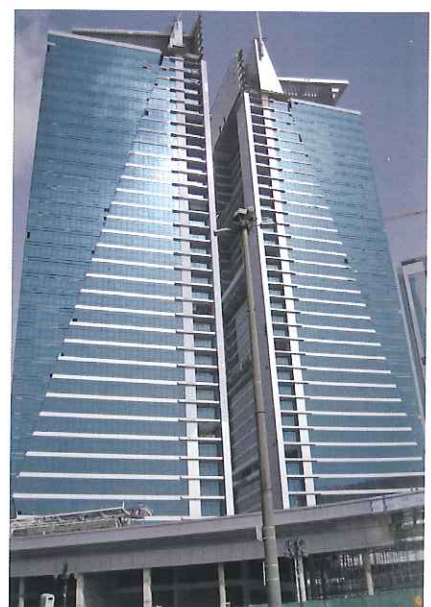
# PROJECTS 2010-2015

## SAUDI ARABIA

### Riyadh / Saudi Arabia Olaya Towers



Eser has constructed the two towers located in downtown Riyadh, the Saudi Arabian capital. The total construction area is 240.000 m<sup>2</sup>. The towers have 44 and 46 floors, with a commercial complex in the basement and indoor car parking areas. The towers will serve as business center.



### Rabigh / Saudi Arabia

### King Abdullah University of Science and Technology (KAUST)



The King Abdullah University of Science and Technology (KAUST) is conceived as a world class postgraduate doctoral, research intensive institution of applied sciences and technology, built along the Red Sea coast of Rabigh, Saudi Arabia.

ESER has built the entire infrastructure and utility networks at KAUST, with a contract value of 310 million US dollars, within 20 months' time.

Asphalt roads	: 60 km
Vehicular Bridges	: 4 bridges over water canals
Storm Drainage System	: 13 km (300mm to 1400mm diameter) RTR pipe
Sanity Sewer System	: 31 km (200mm to 500mm diameter) PVC & RTR pipe
Potable & Fire Water System	: 55 km (160mm to 700mm dia) pressured uPVC & RTR pipe
Golf Area Irrigation System	: 8 km pressured RTR pipe
Roads Irrigation System	: 98 km uPVC pipe
Electrical System	: 190 km, 15 kV MV Cabling, 107 km grounding cabling & 22 nr Package Substations for Power Distribution System and 345 km LV cable and minipillars for Street Lighting System.
Chilled Water Distribution System	: 24 km (100mm to 1200mm diameter) Carbon Steel Pipe
Pump Stations	: For Potable Water and Irrigation Water
Lift Stations	: 8 nr Sanitary Lift Stations and 3 nr Stormwater Lift Stations
Topographic Survey	: A full survey of all features within the campus of 17,23 km <sup>2</sup> with a scale of 1:100
Geographic Information System (GIS)	: An integrated GIS with full coordination of the utilities
Telecommunications with FO Cables	: 232 km PVC conduit installations.

## SAUDI ARABIA

Riyadh / Saudi Arabia

King Abdullah Economic City (KAEC)



KAEC - King Abdullah Economic City is founded at 100 km north of Jeddah. The project consists of the constructions of a new city, with residential, industrial and commercial districts. Eser's scope includes the construction of the infrastructure systems of a development area, with all utility networks, roads and landscaping.

### Jeddah / Saudi Arabia Jeddah Stormwater Drainage Project, Construction of 4 Dams



In order to permanently control the annual floods putting Jeddah under risk, 4 main flood protection dams were built around the city, in addition to their permanent cofferdams. The intention is to preserve the floodwater, and discharge safely to the sea. All dams are Concrete Faced Rockfill Dams.

Ghaia Dam	: h= 18m, width=645m
Um Hablain Dam	: h=12m, width= 860m
Daghbaj Dam	: h= 15m, width=630m
Braiman Dam	: h=21m, width=190m
Asphalt Roads	: 19 km

General Excavation	: 2.266.533 m <sup>3</sup>
Channel Excavation	: 1.955.120 m <sup>3</sup>
Rock Excavation	: 987.480m <sup>3</sup>
Filling	: 1.046.410 m <sup>3</sup>
Rock Fill	: 999,475 m <sup>3</sup>

Jeddah / Saudi Arabia

### Jeddah Stormwater Drainage Project Construction Ghulail Dam and South Canal



As part of the Jeddah Stormwater Drainage Programme, another Concrete Faced Rockfill Dam is built out of the city, protecting the town from irregular floods. The main discharge canal, built from the dam until the sea discharge, targets to carry the flood water collected in the dam.

Ghulail Dam	h= 10.5m, width= 1240m,
Asphalt Roads	: 7.5 km
General excavation	: 298.556 m <sup>3</sup>
Channel excavation	: 172.355 m <sup>3</sup>
Rock excavation	: 122.000 m <sup>3</sup>
Filling	: 244.314 m <sup>3</sup>
Rock Fill	: 45.377 m <sup>3</sup>

### Jeddah / Saudi Arabia Jeddah Urgent Stormwater Drainage Project

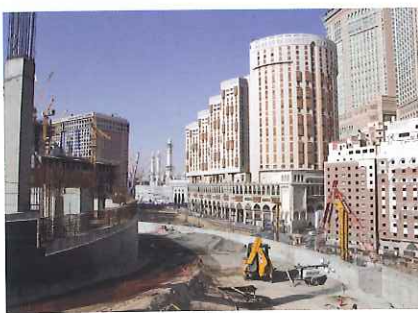


Stormwater drainage program in Jeddah was a fast track project completed in 99 days with a project value of 141 million US dollars. A critical component of these improvements was the upgrading and modernization of the drainage system. The establishment of these infrastructure components reduced major flooding damages.

New Drainage Line	: 25,5 km
Cleaning of Existing Drainage Line	: 65 km
Asphalt	: 25.700 m <sup>2</sup>
Excavation	: 860.146 m <sup>3</sup>
Pump Stations	: 6

## SAUDI ARABIA

### Makkah / Saudi Arabia Jabal Omar Development Project



The project is located in the center of Makkah Al Muharramah to the west of the Grand Mosque. The Jabal Omar Development is proposed to be a mixed-use development that includes residential apartments, hotels, commercial facilities, parking and associated support facilities.

Jabal Omar is intended to serve the visitors who come for Hajj and Umrah, by providing more accommodations and enhanced facilities. Eser was responsible for the infrastructure works of the Jabal Omar Development Project, including all utilities.

# PROJECTS 2010-2015

## SAUDI ARABIA

### Riyadh / Saudi Arabia King Abdullah Financial District



This project is considered to be one of the most prestigious grand scale investments in the Kingdom of Saudi Arabia. The King Abdullah Financial District will house a large community of professionals working within the financial sector and related industries, hosting the headquarters of the Capital Market Authority, the Stock Exchange, banks, financial institutions and other service providers such as accountants, auditors, lawyers, analysts, rating agencies, consultants and IT providers.

The infrastructure works ESER carried within the project consists of:

- 60.200 m<sup>2</sup> of asphalt roads
- 103 km pipe laying (100mm to 1400 mm diameter)
- 3 pump stations
- 163 km of electrical cable laying
- 97 km of PVC conduit installation with fiber optic cable for telecommunications

### Port Harcourt - Makurdi / Nigeria

#### The Rehabilitation of Railway Between Port Harcourt and Makurdi



The rehabilitation of the railway line for Nigerian Railway Corporation consists of replacement and partial reconstruction of 463 km of the railway in Nigeria. In addition of the replacement of the rails, sleepers and ballast material, the work also includes the rehabilitations of bridges, culverts and structures, as well as soil improvements among the line.

# PROJECTS 2010-2015

## NIGERIA

Osun State / Nigeria  
ESPRO Asphalt Production Co.Ltd.



ESPRO is Eser's asphalt and quarry operations company in Nigeria. Located in a strategic location in Osun State and a close distance to major towns like Ibadan and Lagos, the facility is an integrated plant with a quarry, mix plant and a large asphalt plant. With the most modern equipment in the country, ESPRO is serving her customers best quality asphalt and crushed stone.

# PROJECTS 2010-2015

## CAMERON

### Foumban / Cameroon Foumban - Manki Road



Financed jointly by the Islamic Development Bank, OPEC, and the Government of Cameroon, the project includes the construction of 40 km of asphalt road in Western Cameroon. The carriage way is 7.4 m wide in rural areas, and 9m in urban areas as an asphalt surface. The works also include the constructions of bridges and other concrete structures.

### Masalli / Azerbaijan Water Supply and Wastewater Networks, Water and Wastewater Treatment Plants in Masalli Rayon



The World Bank funded design and build project includes the design, supply, installation, construction, commissioning, trial operations and training for the Water Supply System, Water Distribution Network, Water Treatment Plant, Wastewater Network and Wastewater Treatment Plant in the Masalli Rayon of Azerbaijan.

The project includes:

- 7.3 km of HDPE pipeline and 5000 m<sup>3</sup> reservoir for the Water Supply System
- 89,000 P.E. (Population Equivalent) and 927 m<sup>3</sup>/h Water Treatment Plant
- 121.6 km of distribution pipeline, 1362 nr of valves, flowmeters, hydrants and fittings; 3954 house connections for the Water Distribution System
- 4 Waste Water Pump Stations including 12 pumps, 19.6 to 120.75 l/s capacity.
- 115.9 km sewer pipes and force mains, 2555 manholes and 3954 house connections for the Waste Water Network
- 37,000 P.E. (Population Equivalent) and 7462 m<sup>3</sup>/d Waste Water Treatment Plant

# PROJECTS 2010-2015

## TURKMENISTAN

Gokdere, Dagkoçu - Keyik / Turkmenistan

Turnkey Construction of Presidential Restaurants and Guest Facilities



The two guest dining facilities in the outskirts of Turkmen capital were built for H.E. President of Turkmenistan and his guests. The 2 buildings, with a built area of 11 thousand m<sup>2</sup> include multiple dining and reception halls, as well as outdoor dining areas. The buildings are fully furnished in accordance with the requirements of a VIP service.

# PROJECTS 2010-2015

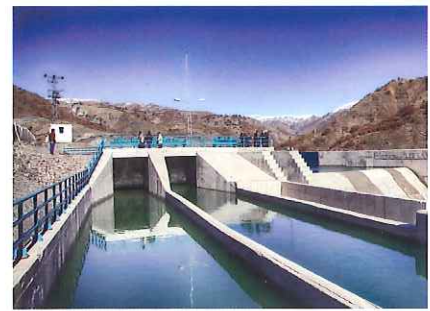
## TURKMENISTAN

### Ashgabat - Turkmenbashi / Turkmenistan Construction of Serdar - Bereket - Kumdag - Balkanabad Highway



200 km section of Ashgabat - Turkmenbashi highway is built along Serdar, Bereket, Kumdag and Balkanabad towns of Turkmenistan. The 6 lane road, with a value of 600 million US dollars, once completed, will decrease the traveling time between Turkmen capital and main port city significantly.

### Kastamonu, Sivas, Erzincan, Mersin / Turkey Eser Hydroelectric Power Plants



The hydropower plant investments of Eser Energy are built under a design - build turnkey contract. The plants, having an installed power of 54 MW in total, are all river run-off type of hydroelectric plants.

Berke HPP	: 10 MW (Kastamonu)
Ekincik HPP	: 9 MW (Sivas)
Sütlüce HPP	: 7 MW (Erzincan)
Ayrınlı HPP	: 19 MW (Sivas)
Sarıkavak HPP	: 9 MW (Mersin)

### Bodrum / Turkey Bodrum Urgent Water Supply Project

Bodrum is the most popular tourist town in Turkey. The purpose of the project is to supply sufficient potable water to the settlement areas.

Within the project scope, Bodrum Center, Bitez, Gundogan, Ortakent, Turgutreis, Gumusluk, Yalikavak, Golturkbuku, Konacik and Yali Towns' water supply systems were established, the water transmission line between the new treatment plant and Bodrum Main Distribution Network Storage were designed and built. All ventouse and delivery valves, line valves and auxiliary structures, 21 unit storages with 1000 m and 2000 m capacities were constructed.



### Diyarbakir - Batman - Siirt, Sivas - Erzincan / Turkey UNDP Rural Development Projects



#### Diyarbakir - Batman - Siirt Cities

The UNDP tendered design and construction project includes the development of sewerage, sanitation and natural treatment systems for 14 villages in Diyarbakir - Batman and Siirt. 13 natural treatment plants, 13 water balance and septic tanks, 44.000 m - 200 mm sewerage pipelines including 1322 unit manholes were designed and constructed.

#### Sivas - Erzincan Cities

The UNDP tendered design and construction project includes the development of sewerage, sanitation and natural treatment systems for 15 villages in Sivas and Erzincan. 15 natural treatment plants, 15 water balance and septic tanks, 25.000 m at the first phase and 47.000 m at the second phase - 200 mm sewerage pipelines including 1420 unit manholes were designed and constructed.

### Ankara / Turkey Eser Green Building



Eser's head office building is a pioneer of Turkish engineering and architecture. The Green Building is certified to LEED Platinum Green Building certification, the highest possible ranking given by US Green Building Council. Eser Green Building is the first building in Turkey to achieve this rating, and is still the highest rated green building of the country.

Located in Ankara, Eser Green Building had an indoor area of 7.500 m<sup>2</sup>. Eser Green Building has been designed and built ensuring water & energy savings and preventing pollution.



Eser Green Building achieved the first LEED PLATINUM  
green building certification in Turkey, the highest rank possible.

[www.esergreenbuilding.com](http://www.esergreenbuilding.com)





**ESER TAAHHÜT VE SANAYİ A.Ş.**  
**ESER Contracting & Industry Co. Inc.**

**MAIN OFFICE**

Eser Green Building

Turan Güneş Bul. Cezayir Cad. 718. Sk. No: 14 Yıldız Ankara TURKEY

Tel: +90 312 408 00 00 Fax: +90 312 408 00 10 E-mail: [eser@eser.com](mailto:eser@eser.com)

