

**schmidt/hammer/
lassen/**

GLOBAL COMPACT COP/ 2016

BY SCHMIDT HAMMER LASSEN ARCHITECTS

DOKK1/ Aarhus/ Denmark

architects/

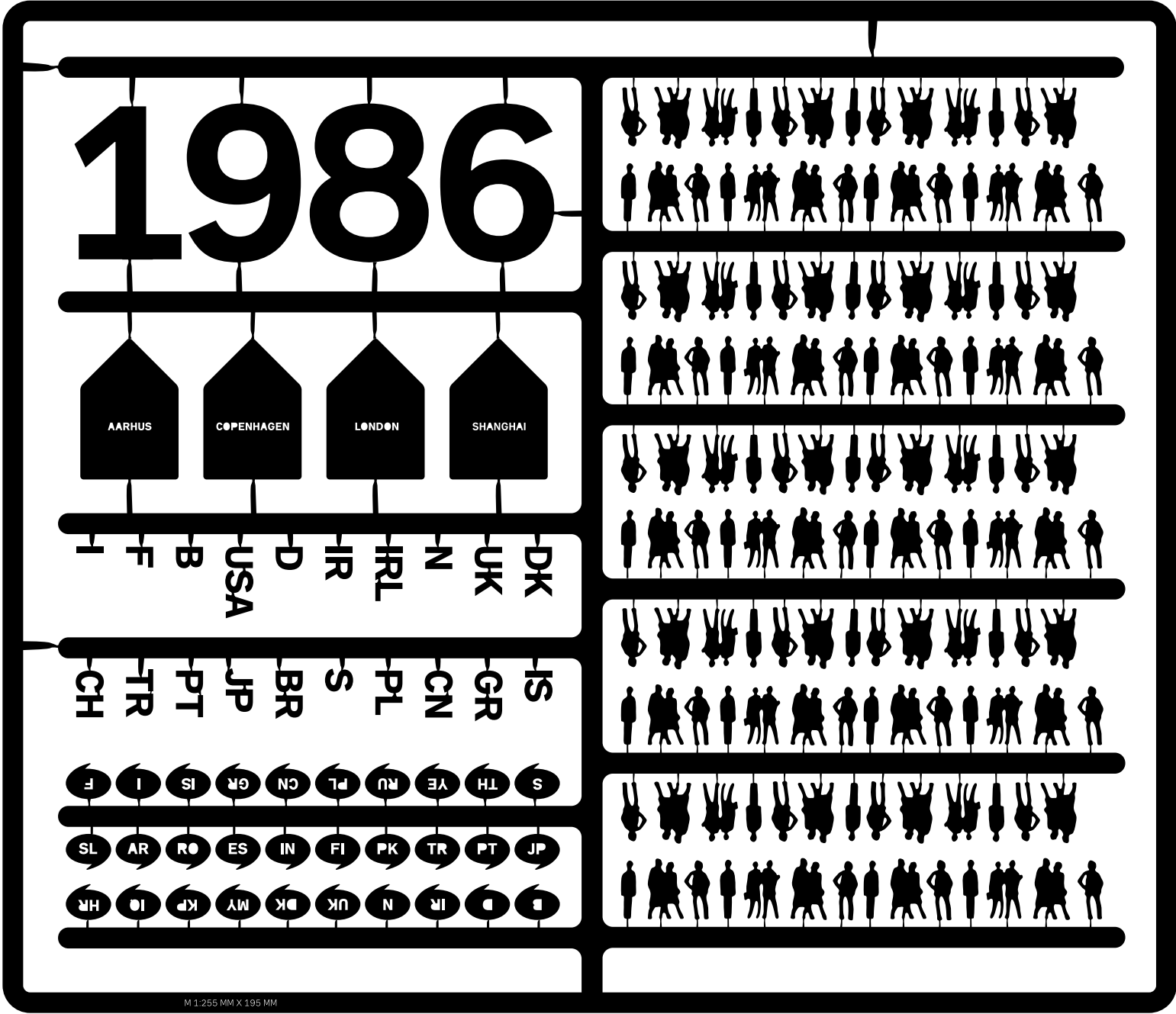
An aerial photograph of a modern, angular wooden playground structure. The structure is composed of various geometric shapes and levels, with a central platform where a child in a pink shirt is playing. Other children are visible on different levels of the structure. The background shows a dark, textured ground, possibly sand or gravel.

CONTENT/

- 05 About us
- 07 Statement of support/ CEO
- 08 We support
- 09 The Global Compact principles
- 10 Principles/ Human Rights
- 14 Principles/ Labour Standards
- 21 Principles/ Environment
- 30 Principles/ Anti-corruption
- 34 Selected Architecture
- 52 Imprint

“We aspire to the highest standard in everything we do. Driven by the vocation that great architecture generates lasting and positive change, we combine intelligent solutions with exceptional experiences that appeal to senses and mind.”

– Schmidt Hammer Lassen Architects/ Core Values



Founded in 1986
4 offices
160 co-workers
20 nationalities
30 languages
International projects account
for more than 50%

ABOUT US

Schmidt Hammer Lassen Architects is an international architecture practice and one of Scandinavia's most recognized, award-winning studios committed to innovative and sustainable design.

Schmidt Hammer Lassen was founded in Denmark in 1986 and the practice has since grown substantially and employs 160 staff today, working out of studios in Aarhus, Copenhagen, London, and Shanghai.

Schmidt Hammer Lassen uphold a distinguished track record of architecture across a broad spectrum of building typologies and has established a reputation for devising truly sustainable solutions with high emotional value, that benefit the environment, society, user, and the overall economy.

Adopting a holistic approach, we believe that the basis of sustainable design is the understanding that every component influences the project. We continuously challenge the concept of architecture by adding innovative methodology and technology to classic Scandinavian design traditions.

Schmidt Hammer Lassen have supported the UN Global Compact initiative since 2008 and submits COP #7 in December 2016.

The COP #7 will be available on the UN Global Compact website and on our website/ www.shl.dk



The group of partners includes senior partners Morten Schmidt, Bjarne Hammer, John F. Lassen, Kim Holst Jensen and Kristian Lars Ahlmark, along with partners Chris Hardie and Rong Lu. Day-to-day management of the practice is the responsibility of CEO Bente Damgaard.



BENTE DAMGAARD/

MSc in Accounting & State Authorized Public Accountant
CEO of Schmidt Hammer Lassen Architects since 2006

Member of the Board/ Business Community Aarhus

Member of the Board/ Falcon Invest A/S

Member of the Board/ Falcon Management A/S

Member of the Board / The Indigo Consortium

Chairwoman of VL 103/ Danish Executives' Business Network

Schmidt Hammer Lassen Architects maintain a strong and ambitious focus on CSR initiatives. Today, we provide excellent sustainable architectural services all over the world, with the overall goal to optimize existing standards for modern buildings and designs - for the benefit of society, people, environment and the overall economy.

In all phases of our work, we pursue to perform with excellence. New knowledge is essential and our studio continually invests time and resources in expanding our expertise, competencies and knowledge.

We believe that architecture solutions increasingly will drive positive change. That is why we engage in innovative research projects, establish collaborative partnerships with both industry and higher education institutions, and offer targeted internal continuing professional development. We have procedures in place to ensure, that new knowledge and best practice are integrated in each project.

In COP 2016 we take the opportunity to report on CSR initiatives and achievements through selected initiatives and architectural projects. We describe how a holistic sustainability approach and integration of Building Information Modelling in project management deliver a high level of impact, from the earliest stage of development to the building is taken into use. We also address the internal focus on Human Resource management, and how we deal with the challenges of increasing international activities.

In acknowledgement of the substantial influence and responsibility of the building industry, we have signed the Nordic Built Charter as well as The Charter of the Danish Association for Responsible Construction.

Schmidt Hammer Lassen have supported the Global Compact initiative since 2008 and the principles continuously constitute an important and essential policy frame of our CSR approach.

I hereby state, that Schmidt Hammer Lassen Architects continuously support the UN Global Compact initiative. We embrace the ambitious UN Sustainable Development Goals and identify Development Goal No. 11 on "Sustainable cities and communities" as our primary focus area by contributing to urban development of inclusive, safe, resilient and sustainable cities of the future.



Bente Damgaard/ CEO
December 2016

THE UN GLOBAL COMPACT

Schmidt Hammer Lassen Architects joined the UN Global Compact initiative in 2008. Global Compact is the world's largest voluntary CSR initiative and initiates and supports corporate operational and strategic focus on social responsibility. This important initiative was started in 2000 under the leadership of then Secretary General Kofi Annan.

The overall goal is to actively commit companies to work to improve the major social, economic and environmental challenges that follow globalization. Global Compact has today grown to be an extensive international network of more than 12,000 signatories from over 170 countries.

Global Compact's ten fundamental principles constitute the core of the stated objectives and cover four key focus areas: human rights, labour rights, environment, and anti-corruption.

10 GUIDING PRINCIPLES

Human Rights

Principle 1/ Businesses should support and respect the protection of internationally proclaimed human rights; and

Principle 2/ businesses should make sure that they are not complicit in human rights abuses.

Labour Standards

Principle 3/ Businesses should uphold the freedom of association and the effective recognition of the right to collective bargaining;

Principle 4/ the elimination of all forms of forced and compulsory labour;

Principle 5/ the effective abolition of child labour;

Principle 6/ the elimination of discrimination in respect of employment and occupation.

Environment

Principle 7/ Businesses should support a precautionary approach to environmental challenges;

Principle 8/ undertake initiatives to promote greater environmental responsibility, and;

Principle 9/ encourage the development and diffusion of environmentally friendly technologies.

Anti-Corruption

Principle 10/ Businesses should work against corruption in all its forms, including extortion and bribery.

A photograph of two people sitting on a wooden bench against a wall of horizontal wooden slats. The person on the left is wearing a light-colored jacket and the person on the right is wearing a dark jacket. Their shadows are cast onto the wall behind them. The image is used as a background for the slide.

GLOBAL COMPACT PRINCIPLES ON **HUMAN RIGHTS**

Principle 1/ Businesses should support and respect the protection of internationally proclaimed human rights; and
Principle 2/ businesses should make sure that they are not complicit in human rights abuses.

WE SUPPORT

Schmidt Hammer Lassen Architects support the United Nations' Universal Declaration on Human Rights and the United Nations' Millennium Development Goals. We work in compliance with Danish legislation which meets international conventions on human rights.



Malmö Live/Malmö/ Denmark

New charter supports CSR in the construction sector

Schmidt Hammer Lassen Architects joined the Danish Association for Responsible Construction in 2014. The objective of the association is to develop and promote social responsibility in the Danish property and construction sector based on a charter of six principles.

1. We systematically assess whether we are observing the principles of the Charter in the projects in which we are involved
2. We assess how collaboration partners and suppliers manage social responsibility
3. We establish dialogue with collaboration partners and stakeholders
4. We work for sustainable solutions
5. We have sound employment and working conditions
6. We demonstrate independence and anti-corruption practices

By signing the charter Schmidt Hammer Lassen Architects declares our support to the six principles. We believe that cross-disciplinary collaboration will only contribute to strengthen social responsibility within the building sector and will support and inspire good practice.



End Poverty 2016 Campaign/

Schmidt Hammer Lassen Architects annually participates as business partner in the Danish NGO campaign The World's Best News which is part of the Danish contribution to of the UN initiative End Poverty 2016 Campaign (supporting The UN Sustainable Development Goals).

The official campaign day is marked at all SHL offices. As business partner we contribute by spreading the positive news both inside and outside the organization telling that the effort and support is making profound changes in the developing countries.

Danida and the Ministry of Foreign Affairs of Denmark financially support the Danish campaign, and the event is a unique collaboration between the UN, DANIDA, more than 100 Danish NGOs and 100 private sector companies.

Please find more information on the Campaign website:

<http://verdensbedstenyheder.dk/>

The Red Cross collection 2016/

Schmidt Hammer Lassen Architects annually supports Red Cross' campaigns internally by collecting clothes at our offices.

Red Cross transforms recycled clothes for money, which they use to relief aid and social work. The clothes is sorted, and everything is recycled, either as clothing or textile fibers.

GLOBAL COMPACT PRINCIPLES ON LABOUR STANDARDS

Principle 3/ Businesses should uphold the freedom of association and the effective recognition of the right to collective bargaining.

Principle 4/ the elimination of all forms of forced and compulsory labour.

Principle 5/ the effective abolition of child labour.

Principle 6/ the elimination of discrimination in respect of employment and occupation.



Labour rights/

At Schmidt Hammer Lassen Architects, we are exclusively dependent on staff members' performance to continue the success of creating and delivering modern, holistic and sustainable architectural solutions for a diverse and international group of private and public clients. Attracting, retaining, developing, and ensuring the health and safety of the staff members is therefore important to the organizational development and a top priority in the strategic management teams' ongoing efforts to realize the visions of our practice.

The Scandinavian countries are by definition attending to secure labour rights and conditions of any staff members through collective agreements and state imposed regulations

concerning employee safeguarding. Additionally, Schmidt Hammer Lassen engage in several specifically selected and designed activities to uphold and extend these rights and continuously improve conditions for all staff members.

In Denmark a collective agreement is in place and applicable to the majority of the organisation's staff members. Colleagues in Shanghai and minor project offices are not covered by the Danish collective agreement, but the organization has made significant efforts to create conditions comparable to the rights and benefits included in the Danish collective agreement. National rules and regulations in force on the non-Danish office sites are followed with rigor.

A democratic work place/

The well-being of staff members is highly valued by the organisation. Hence, dedicated committees are in place and the strategic management participates actively and cooperatively.

The **Health & Safety Committee** take precautionary measures against any form of counter-productive physical and non-physical working conditions, including the prevention of any labour related accident.

The **Collaboration Committee** ensures a positive working environment and engage in dialogue with union representative about organisational development and adjustment to foster employee commitment and retention.

The **Continuing Education Committee** organises and administers the organisation's strategic engagements in relation to staff member training and professional development.

Work environment/ individual development/

We communicate on general work conditions, benefits, rules and regulations in the SHL Staff Handbook, which we hand out when welcoming a new colleague - alongside a well planned on-board program.

A mandatory and planned Employee Development Dialogue / EDD are conducted annually for all staff members together with their manager. This comprehensive sessions are focusing on motivation, job satisfaction, continuing professional development and career development. The EDD results in Individual Development Plan/ IDP for each employee made in collaboration between the manager and the employee. Additionally, there is an annual salary negation for every employee.

At all locations, Schmidt Hammer Lassen Architects encourage the employees to participate in a wide range of social and professional development activities. The company loves to celebrate won competitions, birthdays and anniversaries by inviting to informal gatherings. The SHL Intranet monthly presents various activities to ensure a spirited social life, including knowledge sharing, lectures, courses, site visits and inspiring studytrips.

To ensure assisted learning activities and ongoing professional and personal development for all employees, the Continuing Professional Development Committee frames an annual CPD plan for the majority of the assisted learning activities open for everyone. Learning activities are arranged by specific knowledge groups; GREEN/ BIM/ BUILD/ Project management. The CPD plan is supplemented by the many different individual learning activities, also funded by company means.



Work Place Assessment/ 2016/

The organisation administers a detailed employee survey, a so called Workplace Assessment/ WPA once every three years in order to monitor organisational development on physical working conditions as well as psychological working environment.

In 2016 the WPA consisted of 64 questions in 10 categories. The categories was as different as physical working environment/ my daily work/development/ my manager and reputation. In the assessment, scores range from 0 to 100. At SHL a score above 70 is considered satisfactory. In 2016 the number of respondents was 81% and 7 out of 10 categories scored above 70. The categories reputation/ general well-being and on boarding had an impressive score above 80.

Some important questions in the WPA related to job-satisfaction has recurred in the last three surveys, showing a positive steady increase in the categories reputation and general well-being.

The Executive Board in collaboration with Health & Safety/ Collaboration Committee / Managers / HR identify the key focus areas to be handled and prioritized in continuation of the employee feedback. Hereafter, action is taken on different organizational levels.

Non-discrimination/

Members of staff are the most valuable resource at Schmidt Hammer Lassen Architects. We believe that diversity supports an innovative work environment with world class architecture as a result. The staff of employees today counts 20 different nationalities and a distribution of sex of 45 % women and 55%. We focus on competencies and skills at any recruitment and internal promotion within the organization.

**schmidt/hammer/
lassen/
architects/**

2.2 My daily work

	Strongly disagree	Disagree	Neutral	Agree	Strongly agree
I know which tasks I am responsible for	<input type="radio"/>	<input type="radio"/>	<input type="radio"/>	<input type="radio"/>	<input type="radio"/>
I influence what kind of tasks I solve	<input type="radio"/>	<input type="radio"/>	<input type="radio"/>	<input type="radio"/>	<input type="radio"/>
My work assignments are professionally challenging	<input type="radio"/>	<input type="radio"/>	<input type="radio"/>	<input type="radio"/>	<input type="radio"/>
I feel that my working tasks are meaningful	<input type="radio"/>	<input type="radio"/>	<input type="radio"/>	<input type="radio"/>	<input type="radio"/>
I have access to the necessary internal information about the organisation to carry out my tasks	<input type="radio"/>	<input type="radio"/>	<input type="radio"/>	<input type="radio"/>	<input type="radio"/>
I have the necessary competences and tools in order to solve my tasks	<input type="radio"/>	<input type="radio"/>	<input type="radio"/>	<input type="radio"/>	<input type="radio"/>
In general I have the necessary time to solve my tasks	<input type="radio"/>	<input type="radio"/>	<input type="radio"/>	<input type="radio"/>	<input type="radio"/>
I feel that I can reject additional tasks if my work load is too big	<input type="radio"/>	<input type="radio"/>	<input type="radio"/>	<input type="radio"/>	<input type="radio"/>
In general, I feel a balance between my private life and my work life	<input type="radio"/>	<input type="radio"/>	<input type="radio"/>	<input type="radio"/>	<input type="radio"/>
In general, I feel safe at my workplace	<input type="radio"/>	<input type="radio"/>	<input type="radio"/>	<input type="radio"/>	<input type="radio"/>

Additional comments to the daily work

Comments



Collective Agreement/

In the section below, we outline the basic rules and regulations of the collective agreement pertinent to safeguarding labour rights and we include additional activities designed by the organisation to stimulate a positive working environment, where work life and family life is well balanced.

The Danish Labour Law and Collective Agreement for architects in Denmark provides the following benefits to safeguard employee interests.

- 1/ Fixed salary tiers regulated according to seniority
+ individually salary negotiations
- 2/ Pension scheme
- 3/ Working hours regulation and overtime compensation
- 4/ Favourable maternity and paternity leave
- 5/ Holiday regulations (31 days per annum)
- 6/ Continuing Professional Development (CPD) funding and shared learning activities
- 7/ Employee representation on several organisational boards (Health & Safety committee, Collaboration Committee and Continuing Professional Development Committee)
- 8/ Free union representative elections without management intervention

Additionally, the organisation has chosen to offer extra health care insurances for almost all staff members.

Responsible behaviour/

At Schmidt Hammer Lassen Architect responsible behavior is integrated both in our professional work and in our everyday work life. Standards are thoroughly described in the SHL Staff Handbook.

**schmidt/hammer/
lassen/**

**SHL DAYS/
SHANGHAI 2016**

architects/

SHL DAYS 2016/ SHANGHAI

At Schmidt Hammer Lassen, we have proud traditions when it comes to our annual gatherings, the SHL Days. In September, 150 staff members set out to meet at a four-day adventurous architectour to Shanghai, one of the world's most fascinating and fastest growing cities, one of the biggest on Earth.

We wanted to experience the unique atmosphere of Shanghai, where beauty and charm coexist with kitsch and commercialism. From the colonial architecture of the former French Concession to the forest of cranes and the neon-lighted high-rises stretching above the city, Shanghai is a city of paradox and change.

From the air, waterfront and ground we explored traditional and new architecture by Chinese and international architects, among these, also selected projects by Schmidt Hammer Lassen Architects.

GLOBAL COMPACT PRINCIPLES ON ENVIRONMENT

Principle 7/ Businesses should support a precautionary approach to environmental challenges;

Principle 8/ undertake initiatives to promote greater environmental responsibility, and;

Principle 9/ encourage the development and diffusion of environmentally friendly technologies.

Above all, sustainability is about responding to the basic needs of a client, which can be an individual, a commercial enterprise, a school or an entire community.

In the final analysis, sustainability is about delivering design that functions successfully as a catalyst for positive change. In other words, we are talking about successful place-making: when it works, sustainable design can engender a sense of civic pride, a sense of identity. This is an extraordinary challenge for architects – it is at the very heart of what we do.

The Green Manifesto/ Schmidt Hammer Lassen Architects

A SUSTAINABLE AGENDA

**schmidt/hammer/
lassen/**



The Crystal/ Copenhagen/ Denmark

architects/

The Urban Mountain refurbishment project won 1st prize in the Nordic Built Challenge for the innovative and sustainable new landmark for Oslo/ Norway



Certified green knowledge/

At Schmidt Hammer Lassen Architects, we commit to develop projects and realise buildings based on a holistic concept of sustainability. We work in multifunctional teams with innovative solutions in integrated design processes. We do this in frameworks of various certification systems as well as project specific goal setting working closely together with our clients organisation.

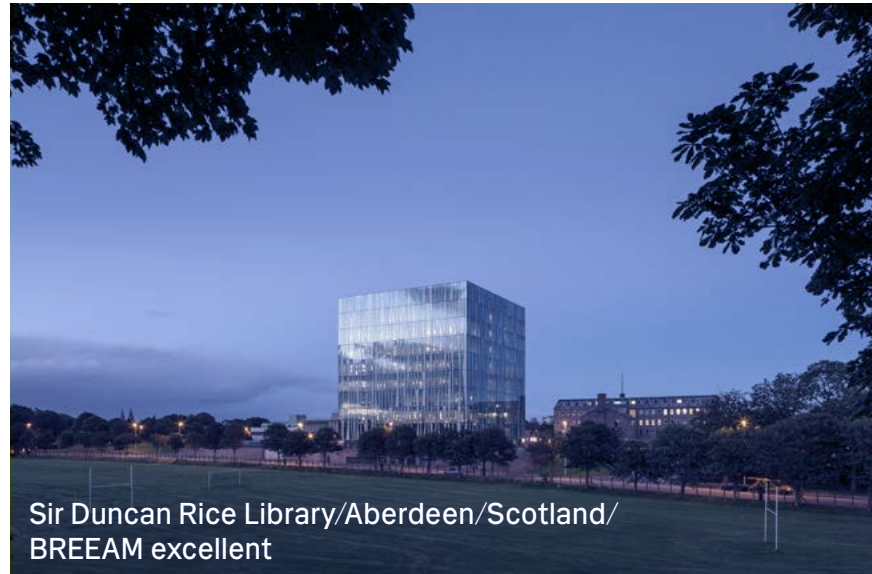
Our architectural staff counts in-house experts in the most important building certification systems, BREEAM International Assessors, LEED Accredited Professionals, DGNB International and DGNB Denmark Consultants and Cradle to Cradle trained professionals, offering certification processes and benchmarking for our clients projects. This enables us to evaluate the “green performance” of a building and give a profound understanding of the interaction of different sustainable parameters. The evaluations are used to seek for optimized green solutions during the design process and better building performances without compromising the ambition for high quality architecture.

Knowledge sharing is fundamental in our practice and in the CPD strategy of the studio. The CPD strategy aids to raise the common level and understanding of holistic sustainability throughout all of SHL. An important knowledge sharing platform is our GREENgroup, where passionate employees exchange cutting edge knowledge of highly sustainable projects and green ideas. In close collaboration with the architecture schools and university colleges we engage with students in different ways as mentors and external examiners in mutual inspiration.

We participate in network initiatives with the focus on implementation of green value management, sustainable reuse of existing building mass and sustainable city development. The specialized staff members of our studio provide public lectures and communicate on our experienced work. We have recently lectured at events organized by Nordic Innovation, Future Built, Building Green and soon at the upcoming BAU-messe in 2017.



Selected sustainable projects/ by Schmidt Hammer Lassen Architects



Sir Duncan Rice Library/Aberdeen/Scotland/
BREEAM excellent



Halifax Central Library/Halifax/Canada/ LEED Gold Certified



Office Building Buddinge/Copenhagen/Denmark/
DGNB Silver Certified



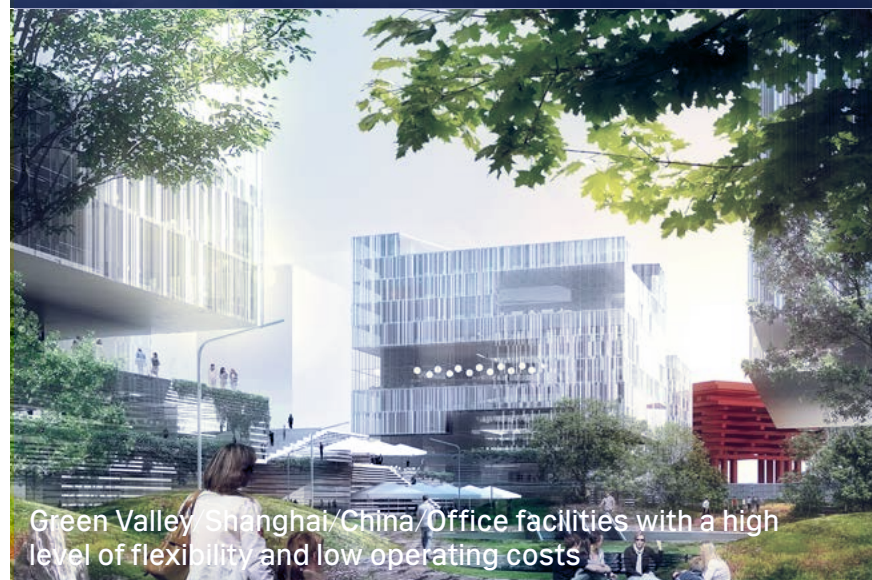
Dokk1/Aarhus/Denmark/ Meets Danish class 2015 low
energy requirements



Amazon Court Building/Prague/the Czech Republic/
DGNB Gold Certified



The Crystal/Copenhagen/Denmark/Energy-consumption
reduction and best practice PV integrated facade design



Green Valley Shanghai/China/ Office facilities with a high
level of flexibility and low operating costs



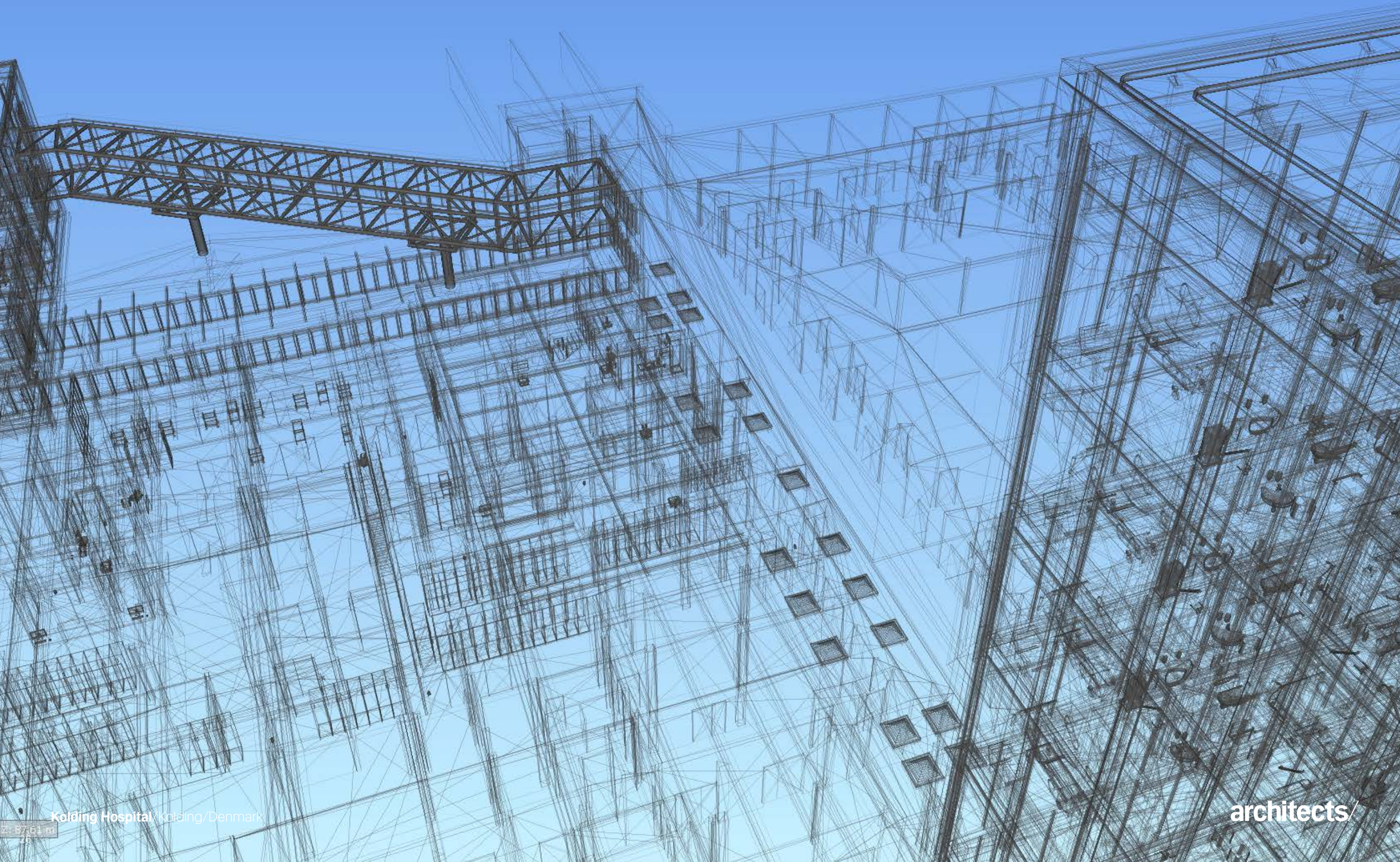
Groendalsvej/Aarhus/Denmark/First zero-energy office
building in Denmark.



Urban Mountain/Oslo/Norway/Refurbishment project
employing Cradle to Cradle principles and targeting a
BREEAM Outstanding certification

BIM/

schmidt/hammer/
lassen/



Kolding Hospital / Kolding / Denmark

architects/

BUILDING INFORMATION MODELLING/ BIM/

Sustainability and Building Information Modelling/ BIM go hand in hand. Schmidt Hammer Lassen Architects have been working with BIM for many years, and now execute all major projects with the use of BIM.

Internally, BIM is used to develop and validate the designs of our buildings with the use of sustainable analysis and simulations, which allows us to optimize documentation of the project for construction. Externally, BIM is used on all project organization levels to communicate the design - enabling a smoother decision making process.

The result is an optimally coordinated process and collaboration and minimisation of errors. We facilitate the dialogue with clients and related stakeholders to clarify and define the scope of information and data which need to be successfully handed over on delivery of the project, for better and lower cost facility management.

When environmental analysis and simulation tools are used from the earliest stages of a design process, projects can be designed to benefit from local environmental conditions such as site orientation, solar access and seasonal winds as well as support selection of the used materials. For the client, coming user and the community, this means a more sustainable, enduring and energy efficient building.

**schmidt/hammer/
lassen/**

architects/

Building new knowledge/

Successful integration of new methods and technologies requires an extensive level of knowledge sharing. Therefore, the BIM management group engages in BIM Networks, BIM standard organisations and conferences, and also lectures at conferences and educational institutions. These activities are essential in order to build and share new knowledge – internally as well as externally.

Schmidt Hammer Lassen is co-founder and member of the BIM7AA, a voluntary collaboration between seven Danish architectural practices in collaboration with the Aarhus School of Architecture. The purpose of BIM7AA is to develop and continuously optimise commonly developed BIM-tools, -methods and -processes with focus on interdisciplinary cooperation.

New Knowledge Centre/ Molio

Schmidt Hammer Lassen is also member of Molio, a new construction knowledge centre focusing on digital solutions and new technology. Molio is taking over the role as the buildingSMART network in Denmark and will also be the new buildingSMART Nordic Chapter partner and coordinate activities in Denmark.

BIM is also one of the key cornerstones in the internal strategic continuing education plan. Additional BIM has its own internal taskforce and a separate internal budget as Schmidt Hammer Lassen acknowledges that being a first mover on this field requires constant research, a large professional network and education. Running evaluations of the BIM projects is part of these knowledge sharing initiatives.

Links/

bim7aa.dk/index_UK.html
www.molio.dk

Quality Assurance/

Schmidt Hammer Lassen Architects have wide-ranging experience in high-level quality management to meet both client demands and regulatory requirements - from the very beginning of a project until final handover.

Working internationally, the applied Quality Assurance standards need to be applicable to the multitude of projects, that we work on all over the world, as well as support the unique architectural quality.

The quality assurance policy of the practice is described in detail in the SHL Quality Assurance Manual, and it has been prepared according to the following guidelines and standards:

- / Quality Control in Architectural Practices published by The Danish Association of Architectural Firms
- / The DS/ISO 9001 standard

The SHL Quality Assurance Handbook is a process tool that includes guidelines and standards for planning, implementation and quality control. The Handbook is verified and updated on an ongoing basis.

**schmidt/hammer/
lassen/**



BUSINESS ETHICS/

The independent international NGO, Transparency International was founded in 1993 and is now present in more than 100 countries. The organization annually publishes reports on corruption – and for many years Denmark has been placed as one of the world's least corrupt countries. The result underlines the very high standards of Danish companies.

We hold a reputation as a responsible and conscientious business partner and dissociate from corruption, extortion, and bribery in any form. The studio has never been involved in corruption or bribery and the company has worked out policy guidelines which are carefully described in the Schmidt Hammer Lassen Architects staff handbook that are handed out to all employees on their first day at work. In this we state that:

„Our business ethics are grounded on trustworthiness, honesty and transparency. Accordingly, employees at all levels must avoid letting financial and/or personal interests influence – or arouse suspicion of influencing – their work-related decisions or conflicting with the interests and ethics of the organisation. Moreover, we expect all employees to act in accordance with applicable legislation.“

We support the UN Convention against Corruption and the UK Bribery Act.

**schmidt/hammer/
lassen/**

GLOBAL COMPACT PRINCIPLES ON ANTI-CORRUPTION

Principle 10/ Businesses should work against corruption in all its forms, including extortion and bribery.

architects/



WE SUPPORT/ THE UN SUSTAINABLE DEVELOPMENT GOALS

In 2015, leaders from 193 countries came together to commit to ending poverty, combating climate change, and fighting injustice by adopting a new set of 17 measurable Sustainable Development Goals (SDGs).

At Schmidt Hammer Lassen, we have identified Development Goal no. 11 - concerning “Sustainable cities and communities” that target future cities to be inclusive, safe, resilient and sustainable, as our primary focus area.



**In 2015 Nordic Innovation published
the book "30 Sustainable Nordic buildings"
featuring best practice examples based on the
Nordic Built Charter principles.**

**Schmidt Hammer Lassen's highrise winning
project in downtown Oslo, the Urban Mountain,
will become another icon of the Norwegian capital
and sets new standards for sustainability.**

THE NORDIC BUILT CHARTER/

Schmidt Hammer Lassen Architects have signed the Nordic Built Charter; committed to accelerate the development of sustainable building concepts initiated by the Nordic ministers for trade and industry. The Nordic Built Charter is a public declaration of the values, intentions and ambitions of a united Nordic building sector. It describes a holistic approach to the built environment – taking energy, climate, economy and people into account.

The intention is that relevant actors from across Nordic borders and across the entire value chain of the building sector will commit to its ten principles. In short, The Nordic Built Charter gives the building sector a platform for cooperation and provides a common set of fundamentally Nordic and sustainable values, promoting a balanced and integrated societal development based on environmental, economic and social sustainability.

The Nordic Built programme combines key Nordic strengths, provides attractive and effective arenas for collaboration and realizes concrete projects that demonstrate world-class scalable solutions.

In 2012 the Nordic Built Challenge – a high profiled international architectural competition - was organized by Nordic Innovation. The ambition were to create five lighthouse projects for the Nordic region, one in each country, demonstrating the solutions for sustainable refurbishment of the existing building stock, which the Nordic building industry is able to deliver.

With the Urban Mountain refurbishment project Schmidt Hammer Lassen and team won 1st prize for the innovative and sustainable new landmark for the city of Oslo.

More information: www.nordicinnovation.org/nordicbuilt/the-challenge/

SELECTED ARCHITECTURE/ SOCIAL/ SUSTAINABLE/ IMPACT/

Shenzhen East Waste-to-Energy Plant/ Shenzhen/ China

The world's largest waste-to-energy plant



Architect/ Schmidt Hammer Lassen Architects **Size**/ 112,645 m² **Competition**/ 2016, 1st prize, international competition **Client**/ Shenzhen Energy Environmental Engineering Ltd. **Partner architect**/ Gottlieb Paludan Architects
Structural Engineer/ Schlaich Bergermann Partners **Visuals**/ Beauty & the Bit



Shenzhen East Waste-to-Energy Plant/ Shenzhen/China

In 2016, Schmidt Hammer Lassen Architects in collaboration with Gottlieb Paludan Architects won the international competition to design the world's largest waste to energy power plant in Shenzhen, China.

Located on the outskirts of Shenzhen, the Shenzhen East Waste-to-Energy Plant will incinerate 5,000 tonnes of waste per day, generating 550 million kWh every year. With a population of 20 million, Shenzhen produces 15,000 tonnes of waste a day, a number that is increasing approximately 7% per year. To counteract this, Shenzhen Energy wishes to build a new plant that not only uses the most advanced technological processes in waste incineration but also act as a source of education for the citizens of the city.

The proposal organizes the entire plant, including auxiliary buildings, into one circular building breaking the traditional rectangular layout of an industrial power plant. By proposing a clean circular form, the footprint of the plant reduces the amount of excavation required to build on the site.

Public visitors are invited into the plant through a landscaped park, via an entrance bridge that rises between the stacks to an entrance lobby and visitor centre overlooking the plant machinery. An internal circular path and walkway circle the plant explaining each process, before leading up to a 1.5km panoramic public walkway on the roof overlooking the surrounding landscape and back towards the city.

The roof is designed to be covered by up to 44,000m² of photovoltaic panels, providing the opportunity for the plant to not only provide a cleaner way to deal with the city's waste but also contribute to the renewable energy provision for the city.

The plant is intended to showcase the Waste to Energy production as an important technical process that is geared to deal with both the issues of growing waste, but also the issue of finding new more environmentally friendly ways of generating electricity. At the same time, visitors can become informed on the challenge of the growing waste we produce every day and be educated on initiatives on how we can reduce our own amount of daily waste.

Schmidt Hammer Lassen has built a reputation for bringing a strong Scandinavian design approach to large complex public projects in China. Detailed design work is due to begin during 2016, and the plant is scheduled to go live in 2020.

The Green Tower/ High-rise build as a sustainable community

**schmidt/hammer/
lassen/**



architects/



With this project we wanted to explore, how high-rise build in timber can be organized as a sustainable community.

Morten Schmidt, senior partner



The Green Tower/ sharing/ social/ living/ urban/ interaction/ community/ flexible/ green/

A new typology

Schmidt Hammer Lassen Architects have developed a new high-rise concept. The concept proposes a new typology for high rises. As oppose to the common method of designating fixed units for sale, this project proposes to design a structural framework for housing units, community facilities, and vegetation to be infilled at later stages.

This approach creates the flexibility for a high-rise to serve multiple purpose through time. It is adaptable spatially, socially and economically. This type of building may serve as a green wall in the dense urban area at one point and then infilled by modular housings at a later stage.

Modularity is a key factor in this typology. Prefabricated units can simplify the construction and allow units to be expand or reduced upon demand. Yet, the types of modules can be variable to create different spatial and social opportunities over time.

Sustainable Housing/

Development of contemporary cities and urban environments is often operating on traditional and even outdated approaches for residential high-rise, designing towers that only address the demand for housing and utilizing obsoleted techniques, that organize family units into compact and isolated order.

Over time, this type of housing can be prone to become a burden to our cities' environmentally and socially and effect degrading of market value. It is crucial to develop a new housing typology that considers the whole environment for a sustainable life-style, Sustainable Housing solutions. The total environment for sustainable housing converges three key aspects: environment, community and building construction.

International Criminal Court/ The Hague/ Netherlands/

A landmark for peace and justice



Architect/ Schmidt Hammer Lassen Architects **Client/**The International Criminal Court (ICC) **Area/** 54,000 m² / 1,200 workplaces **Competition/** 2008-2010, first prize in restricted international competition
Engineer/ Royal Haskoning Nederland B.V. and Esbensen - Consulting Engineers AS **Landscaping/** SLA **Project management/** Brink Group **Interior & Art/** Bosch & Fjord **Contractor/** Courtys



International Criminal Court/ The Hague/ Netherlands

In 2010, Schmidt Hammer Lassen Architects won the prestigious architectural design competition for the new permanent premises of the ICC with an experienced interdisciplinary team of consultants. The design was selected for its understanding of the concept of transparency. The design also shows how democratic values upon which the Danish tradition for architecture rests, reflect in an international institution that is subject to some of the strictest security requirements in the world.

Safety and openness

In the design approach it has been paramount that the security measures, as much as possible, are an integrated part of the design. The public has easy and open access to the main entrance and the design of the landscape surrounding the building achieves a highly secure environment without the appearance of barbwire and high fences.

The landscape

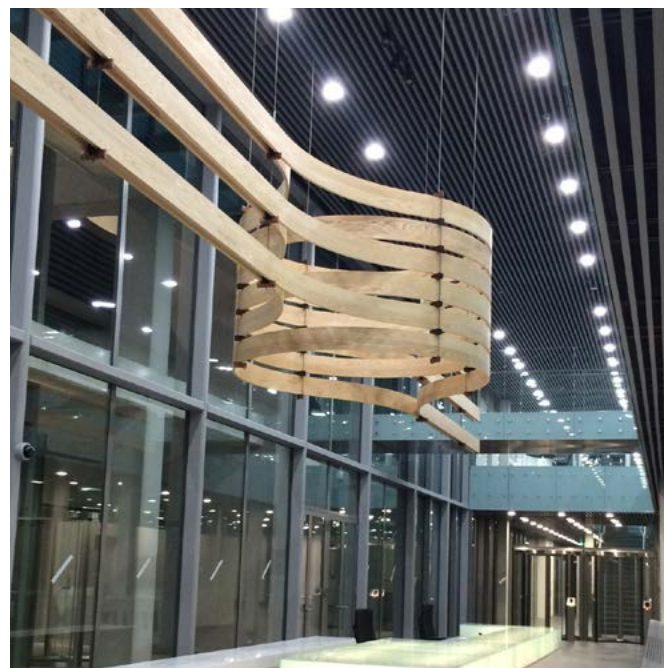
The new ICC headquarters is located between the edge of the Hague city and the Meijendel Dune Landscape, which is a protected Natura 2000 area. One of the primary and most important aims of landscape architects SLA's concept is to 'reunite' the site with this dune landscape. The primary idea has been to locate the complex as a cut in the landscape, establishing an interior that relates to the international collectivity of the ICC, and an exterior that entrenches the ICC to the local Dutch landscape and opens it to the public.

Sustainability

The new headquarters for the ICC is targeting a BREEAM Excellent certification. The complex is part of the local water-win area. Therefore strict local regulations applied for materials, their possible leaching and work during the construction period. Several environmental sustainability measurements have been implemented into the design such as: a heat- and cold storage, which is the largest of its kind in the Netherlands, green roofs, water-saving taps and toilets, automatic daylight control of luminaires for all lighting in offices and biological cleaning of the mirror pond.

"In our design, we are aware of how important it is for this building to express the values of the ICC. To the victims, to their families and to the world, the ICC premises must communicate respect, trust and hope."

Bjarne Hammer, senior partner



The library/
A new generation of public buildings/

**schmidt/hammer/
lassen/**

**PUBLIC
LIBRARY
OF THE
YEAR
AWARD
2016**

AGENCY FOR CULTURE AND PALACES
SYSTEMATIC

Public Library of the Year Award/ 2016

In 2016, the visionary hybrid library project, Dokk1 in Aarhus, Denmark, was announced winner of the Public Library of the Year Award at a prestigious ceremony during the International Federation of Library Associations and Institutions (IFLA) congress in Columbus, Ohio. The international panel of judges recognised Dokk1 as a true library of the future, that embraces new digital developments, user demands, local culture, and a desire to accommodate diverse population groups within an open and functional architectural expression.

The Dokk1 project also scooped an A+ Popular Choice Award in 2016 in the Library category. The event organized by Architizer brought together an eclectic mix of architects and designers from around the globe.

DOKK1/ Aarhus/ Denmark/
Space for change/ New Public Library/



Architect/ Schmidt Hammer Lassen Architects **Client/** Aarhus Municipality **Client Partner/** Realdania **Area/** 35,600 m² **Competition/** 2009, first prize in an international competition
Engineer/ Alectia Rådgivende Ingeniører **Landscaping/** Arkitekt Kristine Jensens Tegnestue **Client Consultant/** Rambøll Danmark **Other consultants/** Bahn arkitekter (accessibility)

“Dokk1 is not simply a building. It is a place for exchanging knowledge and opportunities and a multicultural meeting point that will change people’s perception of the entire city“

Kim Holst Jensen, senior partner



DOKK1/ Aarhus/ Denmark/

Dokk1 opened its doors to the public in 2015. Situated by the historic harbour front of Aarhus the largest public library in Scandinavia today represents a new generation of modern, hybrid libraries.

Democratic, open and diverse

The 30,000 square metre building is part of the Urban Mediaspace project, and houses the new library, a citizen service centre, automatic parking for 1,000 cars and new harbour-side public squares. New cycle paths run through the scheme that includes over 450 bicycle parking spaces, and the new light railway will run with a station at Dokk1.

The new library has already become a new vibrant hub and a connecting “hinge” that opens up to new experiences in the city of Aarhus.

The two open levels of the library are connected by the media ramp, which consists of five platforms dedicated to numerous activities: exhibitions, gaming, interactive workshops, reading and events. Combined with the literature and media sections, the media ramp offers a meandering path of activity through the building leading up to the children’s area on the top floor.

A covered urban space

The principal idea behind Dokk1 is a transparent covered urban space, designed as a polygonal slice that hovers above a glazed building resting on a podium with large sculptural stairs. The stairs fan out to street level and the new harbour promenade surrounding the building. The glass building is designed as an open urban space with 360-degree views of the water, harbour, forest and city.

The building has no clear front or back, which is emphasised by the multi-edged top slice that creates the impression of rotation and movement. The facade is made of expanded metal, the scale of the city and harbour is reflected in the design, which twists, breaks and turns. The concept of the façade design is an interaction with the height of the surrounding buildings and the scale of the port with reference to large elements, such as cranes and ships.

Sustainability

From the earliest stage, sustainability has been an important integrated part of developing the project, and the building meets the requirements of the Danish 2015 energy classification. Elements such as seawater cooling, effective shielding effects and the 3,000 m² integrated roof solar cells reduces energy consumption considerably. Also light fittings, LED lamps, motion and daylight sensors as well as solar panel arrays reduces dependency on conventional energy sources.

Schmidt Hammer Lassen Architects have extensive experience with library design. The most renowned of these being the extension to the Royal Library in Copenhagen, Denmark, and the RIBA award-winning University of Aberdeen New Library in Scotland. Recently, two Canadian libraries opened in Halifax and Edmonton. In 2018 a new central library in Christchurch, New Zealand, will open, and in 2020 the new City Library of Shanghai.



Halifax New Public Library / Halifax, Canada

**schmidt/hammer/
lassen/**

The Library/ driver of social cohesion

In social sciences, public spaces such as libraries, city halls and culture centres are defined to be cornerstones of the democratic society. These places enable encounters and active citizenship of society. This makes the public building an important facilitator for social cohesion of society, and architecture is a driving part of this.

User involvement/

Schmidt Hammer Lassen and the City of Aarhus received a Best Collaboration Award in 2012 for the extensive cooperation in creating the largest public library in Scandinavia, DOKK1.

The Best Collaboration Award awards the best examples of collaboration between partners from the creative industries sector and local governments in the North Sea Region of the European Union. The jury selected the DOKK1 project team due to the broad and intensive collaboration process between the municipality, the architects, the citizens and future users.

The philosophy behind the user involvement is that an active library will only come to life by actively involving the people who are going to use it. Therefore, citizens of Aarhus and the future staff of the library has been engaged in the design process throughout the whole process.

Halifax Central Library awarded/

The 14,500 m² Halifax Central Library is the most significant public building to be built in Halifax in a generation, and represents the diverse communities, talents, and creativity of the residents of Halifax throughout the municipality and present this to the world. The library is sited in a prominent position in downtown Halifax.

In 2016, The Halifax Central Library was awarded a Governor General's Medal for its outstanding new civic building design, created by Schmidt Hammer Lassen Architects and local studio Fowler Bauld & Mitchell. The Governor General's Medal in Architecture awarded by the Royal Architectural Institute of Canada (RAIC) and the Canada Council for the Arts celebrates outstanding architectural design in Canada.

architects/

Malmö Live/ Malmö/ Sweden/ A city in the city/



Architect/ Schmidt Hammer Lassen Architects **Client/** Skanska Sverige AB **Area/** 54,000 m² concert, congress and hotel **Competition/** 2010, international property development competition
construction 2010 - 2015 **Landscape architect/** SLA **Contractor/** Skanska Sverige AB **Other collaborators/** Akustikon



World
Architecture
Festival

The Malmö Live complex in Southern Sweden, was awarded a prestigious 1st prize in the Mixed-use Completed Buildings category at a ceremony during the World Architectural Festival 2016 in Berlin.

The Jury praised the project as a public building in the best sense of the word: open to everyone, inclusive and very democratic: “It’s a real piece of the city and an important catalyst of urban regeneration”.

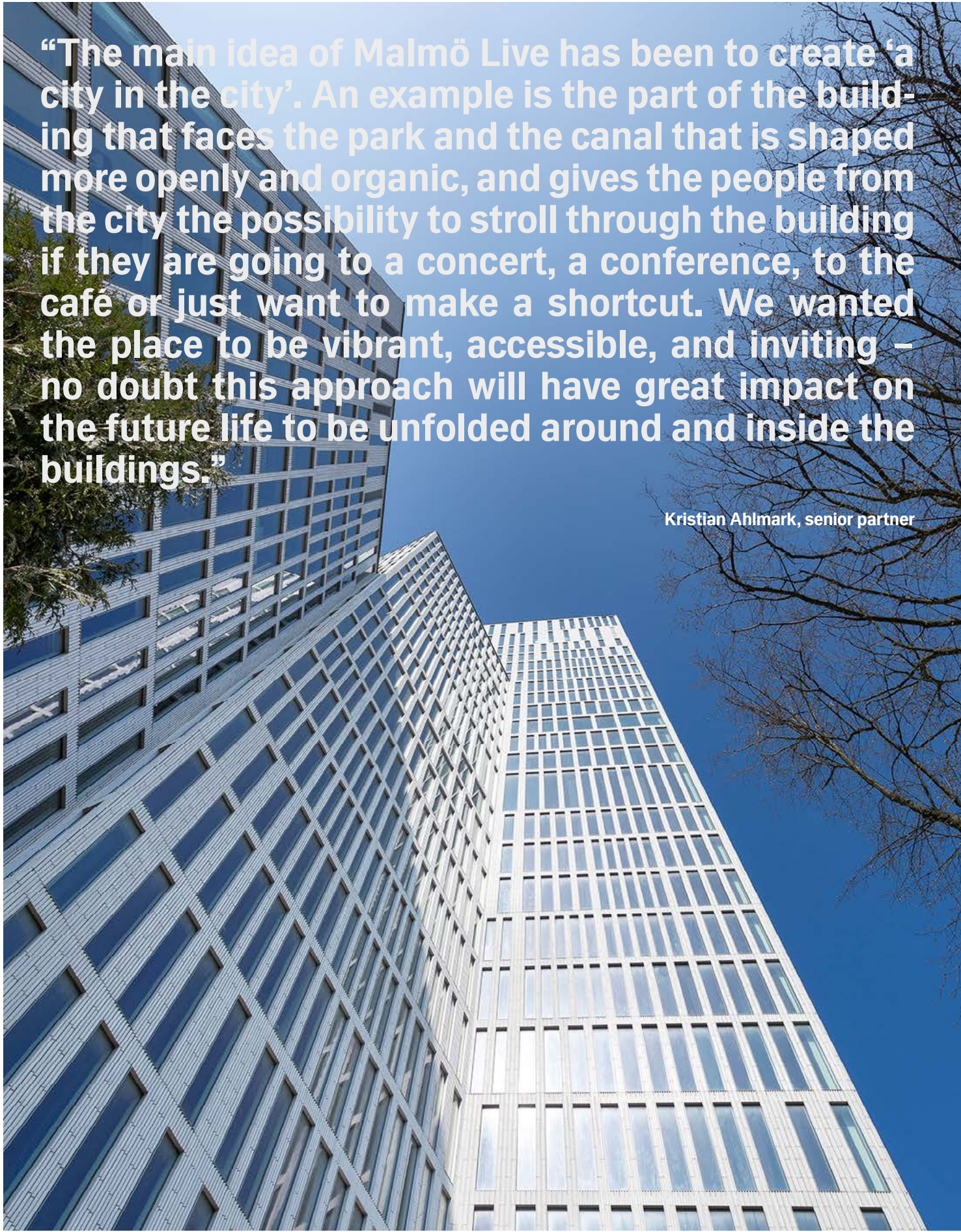
Malmö Live/ Malmö/ Sweden/

A city in the city

In 2015 the new 54,000 square metres large concert, congress and hotel complex situated on Universitetsholmen in Malmö will be completed. The building consists of a composition of cubic volumes that are mutually twisted and given different sizes to meet the directions and building heights of the surrounding city. The façades are designed with a homogeneous expression to make the composition appear as one architectonic sculpture.

The ground floor is open to the public. The main entrance is found at the northern part of the building, with a classic loggia-motif facing the plaza in front. From the south you enter the building directly from

the promenade that runs along the canal. The different functions in the building are organised like separate elements – like a small town. Here, the lobby becomes the street that runs through the whole ground floor plan and ties everything together. Like the medieval cities, with curved and narrow streets organised around plazas and squares, the lobby is designed to form small gathering places and recesses where it is possible to stop, sit and enjoy the view to the canal and the park.



“The main idea of Malmö Live has been to create ‘a city in the city’. An example is the part of the building that faces the park and the canal that is shaped more openly and organic, and gives the people from the city the possibility to stroll through the building if they are going to a concert, a conference, to the café or just want to make a shortcut. We wanted the place to be vibrant, accessible, and inviting – no doubt this approach will have great impact on the future life to be unfolded around and inside the buildings.”

Kristian Ahlmark, senior partner

Open and accessible

The new cultural centre becomes an open, expressive and dynamic building that is manifold in both its activities and its architecture. The point of departure for the building design is the modern Scandinavian architectural tradition with the clear functional organisation and the accessible and open ground floor lay-out. The building becomes the focal point and a landmark for Malmö – a place where the spirit of the city, the diversity and the intimacy is given an architectonic expression.

Sustainability profile

Malmö Live is a sustainable, green project. The intention is to develop the area with as little environmental impact as possible, for example by reducing energy consumption and using local energy sources such as geothermal heating, solar energy and wind power.

Close proximity to City Tunnel and Central Station makes taking public transport easy. Green roofs absorb water, slow up runoff and promote biodiversity. Solar cells meet some of the building's energy requirements. Food waste is collected and turned into biogas, and there are nesting boxes for kestrels on the roofs to help this bird of prey to live in a city environment.

Malmö Live will be certified according to the international Leadership in Energy and Environmental Design (LEED) standard - aiming for the highest level - platinum - in the assessment, which looks at factors like materials, indoor environment, design, and water use. The building also meets the category A standard of the Miljöbyggprogram Syd Green Construction Programme.

Green Valley/ Shanghai/ China/
Transformation as driver/



Lead design architect/Schmidt Hammer Lassen Architects **Local architect**/ECADI (East China Architecture and Design Institute) **Client**/Shanghai EXPO Construction Development Co. Ltd. **Area**/50,000 m² **Competition**/2012, 1st prize in invited international competition **Status**/Construction period 2013 – 2015



Green Valley/ Shanghai/ China/

The Green Valley project is located on the former 2010 Shanghai World Expo site immediately next to the iconic Chinese pavilion. The Green Valley development will become a new central urban development in Shanghai, integrating new sustainable solutions in both the urban design and the individual buildings on the site.

Green Valley is just one of several major projects along Shanghai's historical Huangpu River waterfront being designed by Schmidt Hammer Lassen.

All the projects relate to the redevelopment of the former industrial areas along the riverfront, and build on the studio's track record in regenerating a number of prominent waterfront sites in major cities throughout Scandinavia. Besides Green Valley, our studio is involved in the Shanghai Dream Center development, a former cement factory being converted into Shanghai's new waterfront cultural and creative hub.

This year, Schmidt Hammer Lassen also won the prestigious competition to design the new 125,000-square-metre city Library of Shanghai. The main library volume floats above two pavilions that will house a 1200-seat performance venue, exhibition and events space and a dedicated children's library. They will all open up towards a series of landscaped courtyards and gardens

"Despite the monumental scale of the site, the project relates to the human scale in the public spaces, giving a diverse, vibrant and inclusive community."

Chris Hardie, partner



All rights in this COP is reserved by Schmidt Hammer Lassen Architects

Contact/

Njalsgade 17A
Pakhus 2
2300 Copenhagen S.
Denmark
T +45 86 20 19 00
info@shl.dk
www.shl.dk

Graphic design/

Schmidt Hammer Lassen Architects

Photos/

Hufton + Crow
Thomas Damgaard Jensen
Adam Mørk
Anders Back
Daniel Greniman
Jeppe Carlsen
Ricky Molloy
Schmidt Hammer Lassen Architects

We support/

Schmidt Hammer Lassen Architects hereby states that we operate in accordance with The UN Global Compact's ten principles in the areas of human rights, labour, the environment and anti-corruption. We state that our actions comply with Danish national legislation and related international conventions. This COP reports on the continued commitment and describes actions taken within all four areas.