

Corporate social responsibility report

CAP and Corporate Social Responsibility 2015

CAP is committed to Corporate Social Responsibility (CSR) and the principles of the UN Global Compact. These guide the way we work and the way we implement policies, processes and programs to clearly align our thrust for business growth with our obligations to the society.

The CSR policy recognizes the company's role in the following broad areas: Leadership with vision and values, market place activities, workforce activities, Supply Chain activities, Community activities, Stakeholder engagement and Environmental concerns. The journey has been rewarding and we are encouraged to keep doing good.

Leadership, vision and values

We regard ethical leadership and practice as critical to responsible business and are committed to conducting our business according to ethical, professional and legal standards.

Shared values: The CAP community strives to live its shared values of integrity, Respect for the individual, Customer focus, Team Spirit, Innovation and Openness and Communication.

UACN code of ethics: CAP is a signatory to the UACN code of ethics and conduct which outlines expected pattern of conduct for all employees including the rejection of any form of inducement giving or receiving.

Whistle blowing: The whistle blowing procedure in place ensures that e-mails are anonymously received, discretely investigated and a report sent to the Audit Committee.

Marketplace activities

Our service mission is to delight our customers with exceptional quality products and services. We aspire to provide peace of mind for our customers. Some of the marketplace activities are:-

Product information integrity: Precise and concise information about our products are provided to customers through clear and proper labeling and products information bulletin.

Value/culture alignment of dealers: Dealers and their employees are educated on the values of the company and are supported to imbibe them.

Customer involvement in improvement processes: Product knowledge and suggestions for improvement are discussed regularly with our customers at different customer/consumer engagement fora. Customer satisfaction surveys are also conducted as part of the feedback system.

Capacity building of dealers and users: Several training and development initiatives are conducted annually for our dealers, partners and other users of our products.

HSE compliance of dealers: Dealers' outlets are regularly assessed for compliance with HSE standards and practices. Corrective actions are taken as appropriate to ensure conformity.

Careline Unit: The Customer Careline unit collates and monitors feedback from our customers and other Stakeholders. This is fed into our process and customer satisfaction improvement initiatives.

Workforce Activities

We aspire to be an employer of choice. We recognize that our success is dependent on the caliber and motivation of our People.

Recruitment and retention: Our policy involves the right placement of people in the right roles and retention of talented people. Annual employee surveys are conducted to provide information on what employees' value and where they want us to improve.

Training and development: The annual training plan achievement is measured to monitor performance and progress. Effectiveness of training programs is also monitored through annual performance appraisal of staff and delegation of responsibilities.

Freedom of association and collective bargaining: Our employees belong to a vibrant local union and an industry wide trade union.

Self-development: The tuition costs of pre-approved and relevant programs of study are fully paid for by the company.

The Crèche: A friendly crèche is operated at the company's head office at Ikeja to promote baby-mother bonding.

Recognition: We recognize the achievement of employees who display exemplary traits of integrity, dedication to duty, customer focus and initiative in line with our shared values.

Life after work training: We constantly remind employees of the inevitability of retirement and train them to face the challenges of that situation when it occurs.

Appointment and fair treatment of suppliers and contractors: Suppliers of goods and services are appointed using defined criteria that do not discriminate on the basis of religion, tribe or sex. We strive to treat them fairly and settle their invoices on due dates.

Fair treatment of shareholders: All shareholders are treated equally.

Safety, Health and Environmental (HSE) Activities

We are committed to providing a working environment that is safe for all employees, contractors, customers and members of the public. The company is ISO 9001:2008 certified and also has the ISO 14001:2004 Environmental Management System (EMS) certification.

HSE policy and manual: This sets out the company policy on HSE and actions/guidelines for maintenance of a safe workplace. HSE assessments and fire drills are conducted

regularly.

Environmental Assessment: We conduct periodic environmental assessment of our operations. The environmental assessment report is submitted to the regulatory agencies for verification.

Promoting sustainable environment: We maintain a vibrant relationship with the Nigeria Conservation Foundation. We also ensure that our operations are carried out with minimum impact on the environment.

Promoting healthy lifestyle: We conduct health seminars, provide the environment for recreation and share knowledge on the essence of living well. We have a gym and other recreational facilities to promote healthy living through regular exercise and relaxation.

Community activities

CAP values community leadership and responsibility. We are committed to playing a responsible and responsive role in the community. In 2015, we undertook the following projects:

- Sponsored the Lagos State Model Nursery & Primary School, Olusosun Inter House Sports Competition
- Repainted the Internal & External Surfaces of Children Development Centre
- Sponsored Opebi Primary school, Ikeja Inter-House Sports Competition
- Donated N150,000.00 towards the 6th edition of Manufacturers Association of Nigeria (MAN), Ikeja Consultative Forum
- Supported the tree planting campaign organized by MEDIC
- Donated 2 Projector Screens to support the Manufacturers Association of Nigeria Repositioning Drive
- Donated paints to Gbagada Grammar School
- Donated paints to YEWA Junior High School, Agege
- Donated Paints to Centre for Citizens with Disabilities
- Supported the Police Children School Graduating and Prize Giving Day
- Donated 20% of the paints to be used for painting LASEPA agency building
- Renovated and Repainted St. Agnes, St Patrick and St. Dominic Catholic Primary Schools, Sabo, Yaba, Lagos
- Donated N400,000.00 towards NCF's 2015 Walk for Nature (Bronze Category)
- Donated T-shirts and Face Caps to support Recycle ArtiCreate Awareness Rally
- Repainted Gbagada Grammar School
- Donated N100,000.00 towards the Nigerian Institute of Quantity Surveyors 2015 Merit Awards
- Donated N100,000.00 to support the 13th Edition of the Manufacturers Association of Nigeria (MAN) Ikeja Branch Outreach to the Needy.
- Supported the Pacelli School for the Blind Christmas Celebration
- Supported the MEDIC Clean Green Christmas Carnival

CAP - A Participant in the UN Global Compact Initiative

In August 2006, the company was accepted by the United Nations' Secretary General as a participant in the Global compact initiative-raising the bar in human rights, labour standards, environment and anti-corruption.

We have joined the local network and are committed to propagating the values of the Global Compact.

	Global Compact Principle	Action Taken/Impact Achieved
1	Businesses should support and respect the protection of internationally proclaimed human rights	The staff handbook provides guidelines on Staff welfare, disciplinary and grievance procedures. Employees are made aware of their rights at the workplace and are assured of fair treatment always.
2	Businesses to ensure that they are not complicit in human rights abuses.	People are assessed based on defined criteria that do not discriminate on the basis of religion, tribe or gender. CAP is represented at employers' associations with a view to assisting the process of human rights observance.
3	Businesses should uphold the freedom of association and the effective recognition of the right to collective bargaining.	CAP workers belong to a vibrant local union. CAP recognizes the union's right to collective bargaining and implements industry's collective agreement on schedule.
4	The elimination of all forms of forced and compulsory labour;	Employees discuss, negotiate and agree their terms of employment and are free to accept/reject the terms without coercion. CAP employs 8 hour work day and annual leave with full benefits.
5	The effective abolition of child labour;	CAP will not employ anyone under the age of 18 years and will not do business with any supplier that engages in child labour utilization.
6	The elimination of discrimination in respect of employment and occupation.	CAP is an equal rights employer, without discrimination on account of sex, tribe, religion or profession.
7	Businesses should support a precautionary approach to environmental challenges;	We have undertaken product substitutions in our operations based on environmental considerations. We are committed to producing

		environmentally friendly products. For example, the company has successfully produced Lead-free water based paints making the company first to achieve this feat in the country. CAP is also at the advanced stage of producing a low VOC solvent based paint.
8	Undertake initiatives to promote greater environmental responsibility;	<p>We work closely with agencies to monitor our environmental performance and sustain improvements. We conduct quarterly environmental audits. We ensure regular maintenance of our effluent system.</p> <p>CAP has a well-articulated Environmental Management Programme which made the company to be awarded the NIS ISO 14001:2004 (Environmental Management System) certification by SON.</p>
9	Businesses should encourage the development and diffusion of environmentally friendly technologies.	In making decisions to buy or use products and services, we appraise their environmental friendliness.
10	Businesses should work against all forms of corruption, including extortion and bribery.	CAP is a signatory to the UACN code of ethics and conduct which outlines expected pattern of conduct for all employees including the rejection of any form of inducement, giving or receiving.

CSR pictures



Supported the Police Children School
Graduating and Prize Giving Day



Supported the Pacelli School for the
Blind Christmas Celebration



Donated N100,000.00 towards the Nigerian
Institute of Quantity Surveyors 2015 Merit Awards

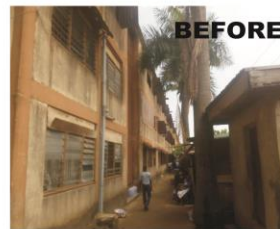


Donated Paints to Centre for Citizens with
Disabilities



Donated paints to YEWA Junior High School, Agege

REPAINTING OF GBAGADA GRAMMAR SCHOOL



RENOVATION AND REPAINTING OF ST. AGNES, ST. DOMINIC AND ST. PATRICK PRIMARY SCHOOLS

CAP plc

