

2015 FIBRIA REPORT INFOGRAPHIC

COMMUNITIES EDITION

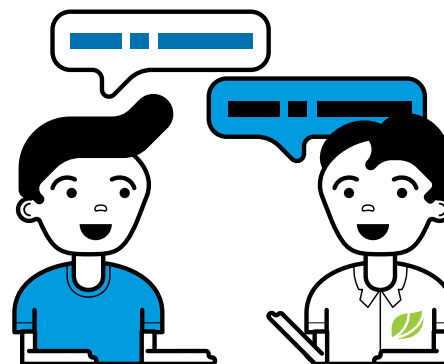


THE VALUE OF DIALOGUE

We want Fibria's presence in communities to generate income and quality of life, allowing families to remain in the fields

OUR SUCCESS DEPENDS ON OUR NEIGHBORS

Part of the wealth that we produce needs to stay in the communities in the vicinity of our forests and industrial units



WE DIALOGUED WITH

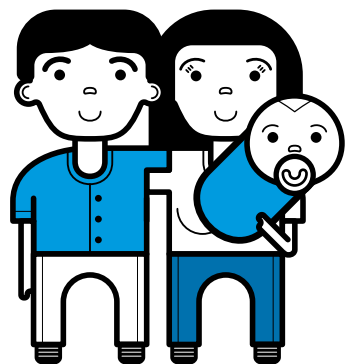
671

COMMUNITIES IN 2015

WE ARE PRESENT IN

246

BRAZILIAN MUNICIPALITIES



OUR PROGRAMS AND SOCIAL ACTIONS
BENEFIT NEARLY

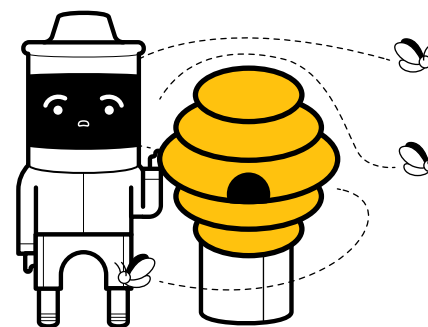
6,000

FAMILIES IN MORE THAN 100
COMMUNITIES

OUR RURAL LAND DEVELOPMENT
PROGRAM (PDRT) HAS TRAINED

4,000

FAMILIES SINCE 2012



FIBRIA INVESTED

R\$34

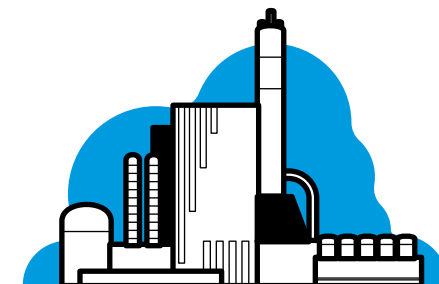
MILLION

IN SOCIAL PROJECTS FOR COMMUNITIES IN
2015, GENERATING AN AVERAGE INCOME
OF R\$ 1,400 PER FAMILY FIBRIA INVESTED

THE WORK TO EXPAND THE TRÊS
LAGOAS, MS UNIT WILL GENERATE

40,000

DIRECT AND INDIRECT JOBS, BOOSTING
THE LOCAL, REGIONAL, AND
NATIONAL ECONOMY

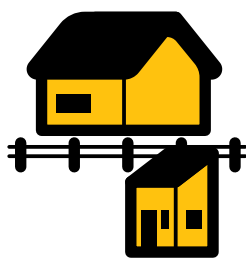


TALKING IS IMPORTANT

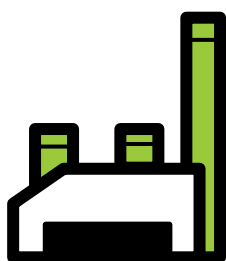
For three years we’ve talked to many people and many organizations. We asked what was important for Fibria and for the people who interact with us. We came up with a list of topics, and one of them was local development and impact on communities



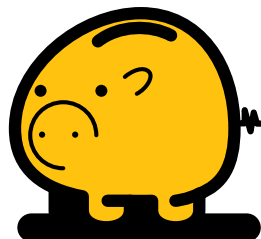
CERTIFICATIONS, VOLUNTARY
INDUSTRY COMMITMENTS, AND
REGULATIONS



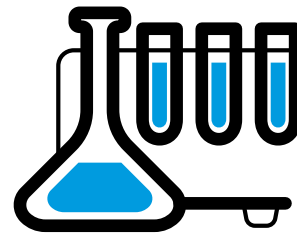
LOCAL DEVELOPMENT AND
IMPACT ON COMMUNITIES



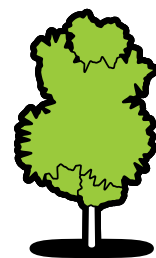
BUSINESS
EXPANSION



FINANCIAL
MANAGEMENT



VALUE GENERATION
THROUGH INNOVATION



FOREST MANAGEMENT,
BIODIVERSITY, LAND USE



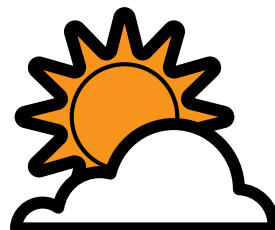
GOVERNMENT
RELATIONS



TRANSPARENCY AND
STAKEHOLDER ENGAGEMENT



WATER
USE



CLIMATE
CHANGE



WASTE



SOCIAL AND ENVIRONMENTAL
MANAGEMENT OF THE
SUPPLY CHAIN

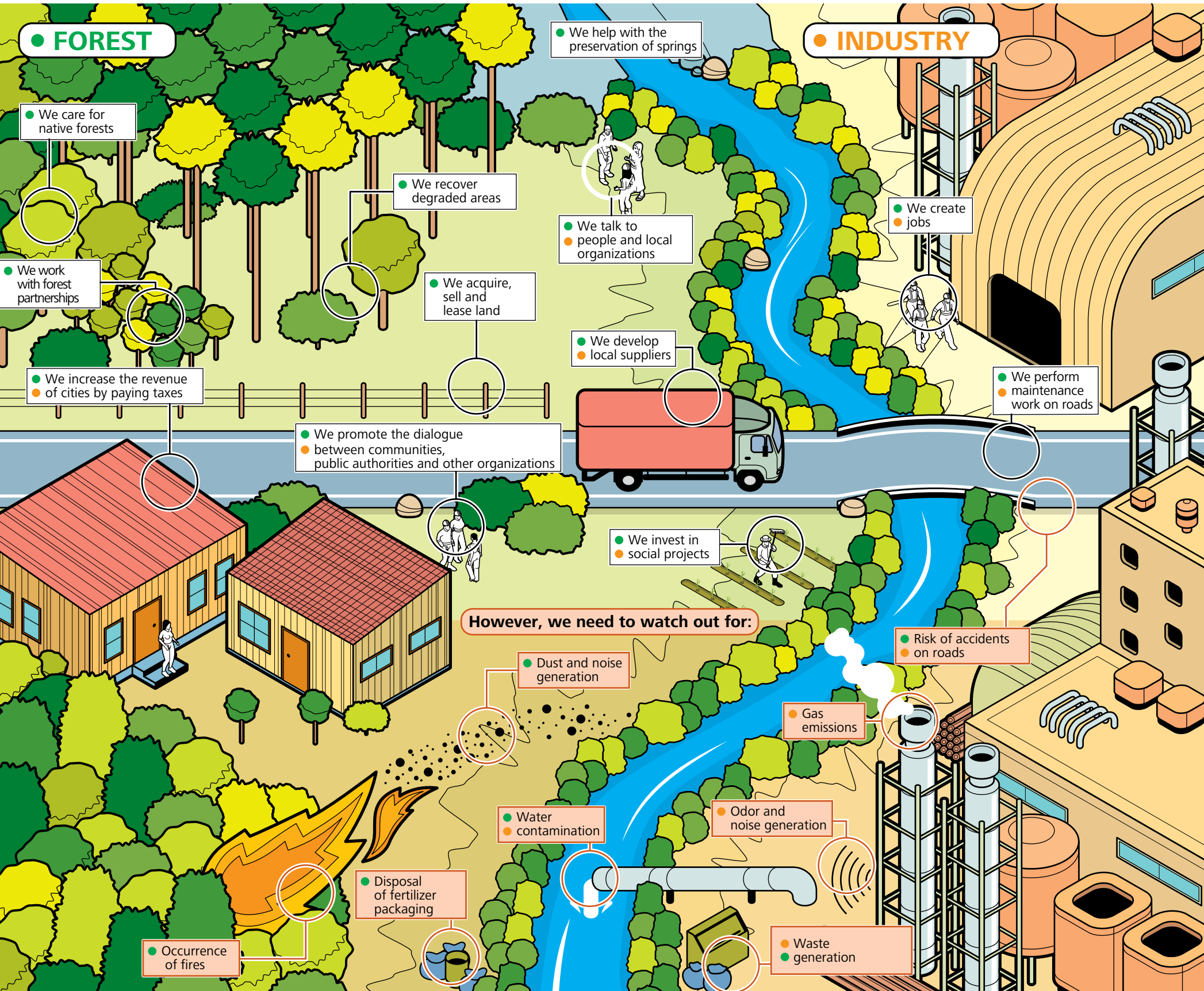
OUR ACTIVITIES IN COMMUNITIES

The daily operations of our business provides benefits to our neighbors, but can also cause disruptions. That is why we always seek improvement

TALK TO US

These are the telephone numbers to contact Fibria. The numbers are toll-free

0800 283 8383 ARACRUZ
0800 707 9810 JACAREÍ
0800 642 8162 TRÊS LAGOAS
0800 891 1730 OMBUDSMAN'S OFFICE



From the forest to consumers

Fibria is the global leader in the production of eucalyptus pulp. In 2015, our production totaled 5.2 million tons. Learn about the value chain of our company.

1 Technology Center

Our value chain begins with hundreds of research projects conducted in our forests and laboratories. The research involves improvement in forest management and industrial processes, in addition to studies on wood biorefinery, genetic improvement and biotechnology. In Canada, we develop technology for high-performance lignin



2 Nurseries

Our nurseries produce seedlings for high yield potential planting



120 million
seedlings produced annually



90 to 120 days
is the time required to develop the seedlings

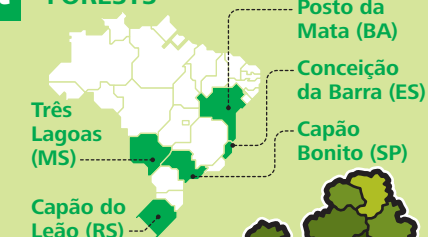


3 Planting and harvest

Eucalyptus plantations help with the conservation of soil, water, biodiversity, and carbon sequestration

5 to 7 years is the growth cycle for eucalyptus trees

FORESTS



FOREST MANAGEMENT

Planted forests and the conservation and restoration of native forests, forming ecological corridors, contribute to the diversity of the landscape. In a rich and diverse environment, for example, planted woodlands are aided by wildlife and plants in controlling pests



24hrs
In order to supply the industrial units, harvest is done uninterruptedly

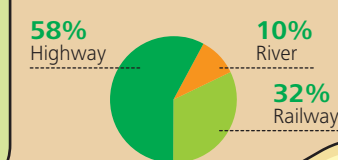
The harvest is entirely mechanized, and the use of GPS has contributed to making the process more precise and improved management

171 km
is the average distance between forests and our industrial units

4 Logistics of wood

Most of the transportation of wood to the industrial unit is done via highways. We use barges between Caravelas, BA and Portocel, ES, and trains from the partnership areas, in Minas Gerais, up to Aracruz, ES

WOOD TRANSPORTATION MODE

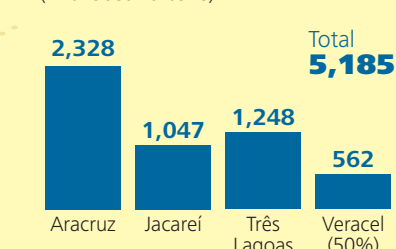


5 Pulp production

When reaching our industrial unit, logs are chopped down into small chips and chemically processed to separate pulp from lignin. The pulp is bleached, dried and bundled for transportation

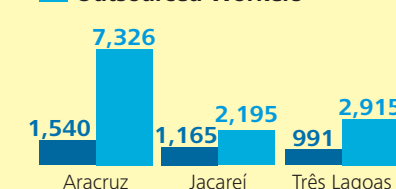
20 eucalyptus trees generate one ton of pulp

Pulp production (in thousand tons)

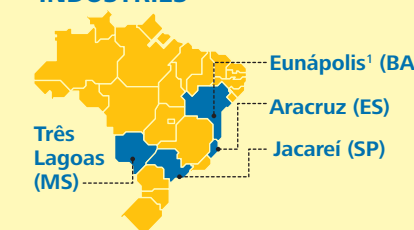


Workers

Own Employees
Outsourced Workers



INDUSTRIES



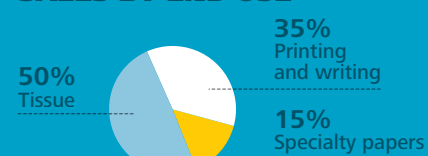
1 Veracel is a joint-venture formed by Fibria and Stora Enso and is located in Eunápolis, BA

7 Commerce and market

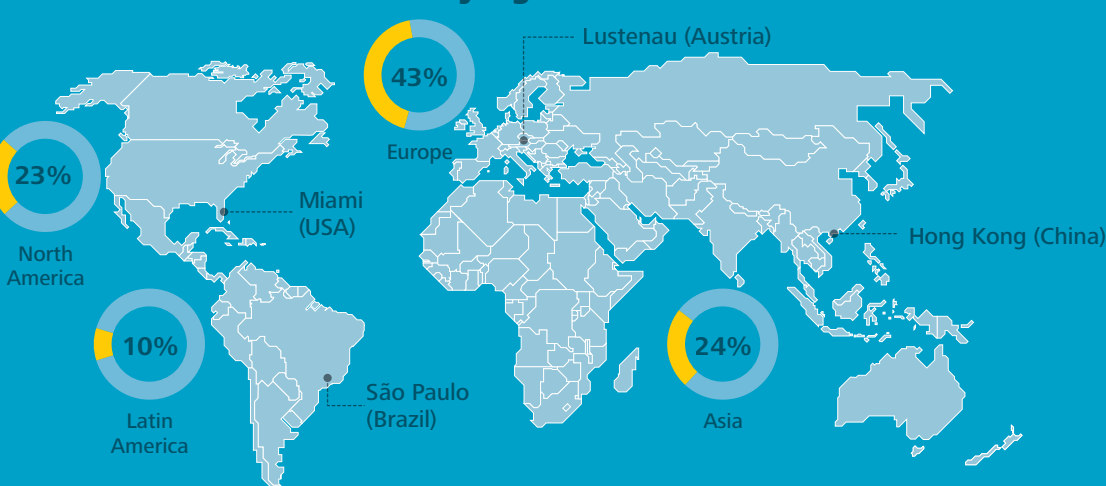
Fibria's pulp is mostly destined to the foreign market, serving large consumer goods companies

84%
is the level of satisfaction of our clients

SALES BY END USE



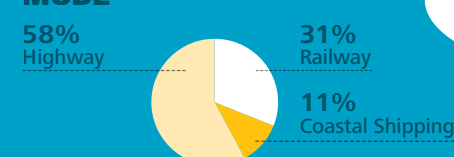
Offices and sales distribution by region



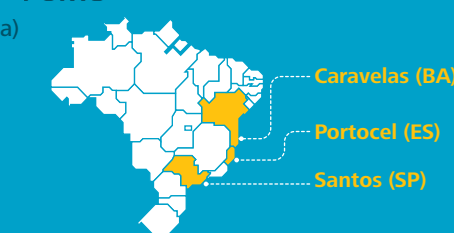
6 Pulp logistics

Pulp produced in Três Lagoas, MS and Jacareí, SP is transported by train to the Port of Santos, SP. Production from Aracruz, ES is taken by truck to Portocel, ES. Fibria's ships deliver 4.6 million tons of pulp per year to clients in Asia, Europe, and the United States

PULP TRANSPORTATION MODE



PORTS





www.fibria.com.br