

2015 FIBRIA REPORT INFOGRAPHIC

CLIENT EDITION

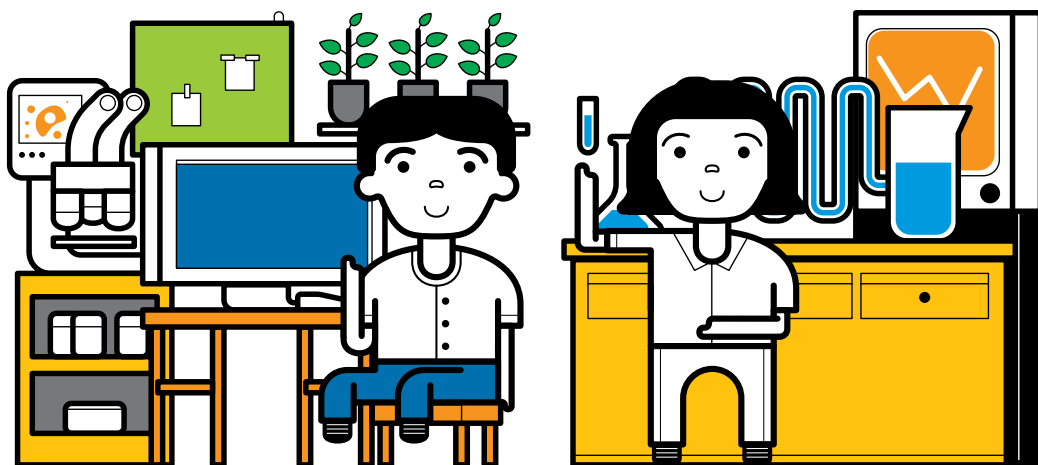


NEW FRONTIERS

A growth
less linked to
the concept of
commodity
implies generating
more value to
our clients

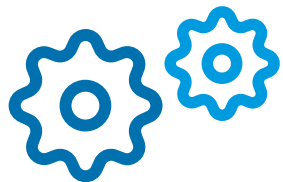
FOREST AND INNOVATION FOR OUR CLIENTS

Striving to generate value to clients by going beyond the concept of commodity, offering differentiated products and elevating the level of the service provided.



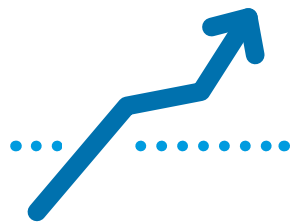
STRATEGIC PILLARS

Combining strength with market opportunity, creating leverage for the growth of the business



OPERATIONAL EXCELLENCE

Seek maximum efficiency and lower costs in industrial and forestry operations



GROWTH

Grow organically and have competitive costs to serve the commodities market



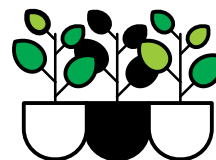
DIVERSIFICATION

Work hard to diversify the business and offer solutions outside the concept of commodities

LONG-TERM GOALS

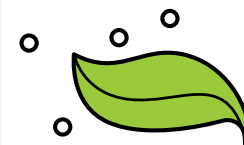
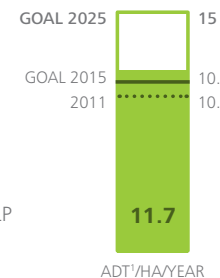
Goals that Fibria will need to achieve by 2025 in order to ensure the implementation of the strategy and sustainability of its business.

See the results for 2015 in the thermometers below

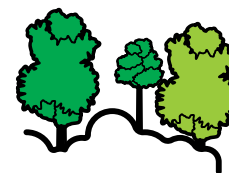
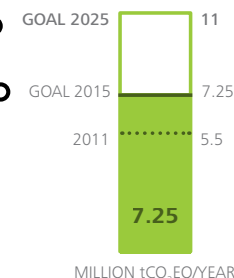


REDUCE BY ONE THIRD THE AMOUNT OF LAND NEEDED FOR PULP PRODUCTION

1 Air dried ton of pulp



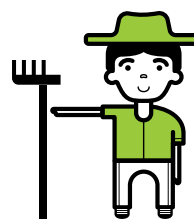
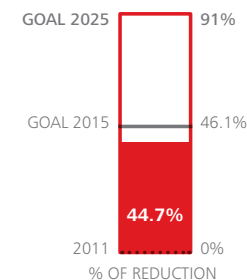
DOUBLE CARBON SEQUESTRATION FROM THE ATMOSPHERE



PROMOTE ENVIRONMENTAL RESTORATION OF 40,000 HECTARES OF ITS OWN AREAS BETWEEN 2012 AND 2025

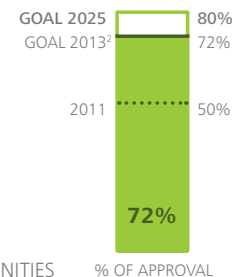


REDUCE BY 91% THE VOLUME OF INDUSTRIAL SOLID WASTE IN OWN OR THIRD-PARTY LANDFILLS

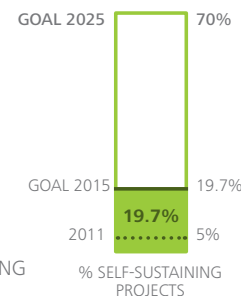


ACHIEVE 80% APPROVAL² IN NEIGHBORING COMMUNITIES

2 This goal was not updated. We maintained the last data available relative to the 2013 goal



HELP COMMUNITIES RENDER 70% OF THE INCOME-GENERATING PROJECTS SELF-SUSTAINING WITH THE SUPPORT OF COMPANIES



SERVING CLIENTS

Through integration of forests, industry and logistics, Fibria brings value to its clients in the four corners of the earth.

12 distribution centers (2 in Asia, 4 in the United States and 6 in Europe)

4 offices (Austria, Brazil, China and the United States)

37 countries where we have clients



WHAT ARE THE MAIN NUMBERS FOR OUR UNITS

Essential information for clients to have confidence in the value generated by Fibria

ARACRUZ (ESPÍRITO SANTO)

2.328 PRODUCTION (IN THOUSAND TONS)

1.540 OWN EMPLOYEES¹

7.326 OUTSOURCED WORKERS¹

0,13 INJURY RATE²

92% RENEWABLE ENERGY FROM THE MATRIX

0,4 BALANCE OF EMISSIONS³ (IN MILLION TONS OF CO₂EQ)

33,3 WATER WITHDRAWAL (IN M³/ADT)

71% WATER RECYCLED AND REUSED (IN INDUSTRIAL OPERATIONS)

334.363 TOTAL FOREST AREA (IN HECTARES)

119.820 TOTAL CONSERVATION AREA (IN HECTARES)

54.800 FOREST PARTNERSHIP (IN HECTARES)

FOREST CERTIFICATIONS
289.973 HECTARES (FSC®)
323.869 HECTARES (CERFLOR/PEFC)

JACAREÍ (SÃO PAULO)

1.047 PRODUCTION (IN THOUSAND TONS)

1.165 OWN EMPLOYEES¹

2.195 OUTSOURCED WORKERS¹

0,97 INJURY RATE²

84% RENEWABLE ENERGY FROM THE MATRIX

1,5 BALANCE OF EMISSIONS³ (IN MILLION TONS OF CO₂EQ)

26,3 WATER WITHDRAWAL (IN M³/ADT)

81% WATER RECYCLED AND REUSED (IN INDUSTRIAL OPERATIONS)

157.202 TOTAL FOREST AREA (IN HECTARES)

61.762 TOTAL CONSERVATION AREA (IN HECTARES)

8.029 FOREST PARTNERSHIP (IN HECTARES)

FOREST CERTIFICATIONS
157.198 HECTARES (FSC®)
157.198 HECTARES (CERFLOR/PEFC)

TRÊS LAGOAS (MATO GROSSO DO SUL)

1.248 PRODUCTION (IN THOUSAND TONS)

991 OWN EMPLOYEES¹

2.915 OUTSOURCED WORKERS¹

0,33 INJURY RATE²

93% RENEWABLE ENERGY FROM THE MATRIX

5,4 BALANCE OF EMISSIONS³ (IN MILLION TONS OF CO₂EQ)

29,0 WATER WITHDRAWAL (IN M³/ADT)

80% WATER RECYCLED AND REUSED (IN INDUSTRIAL OPERATIONS)

345.882 TOTAL FOREST AREA (IN HECTARES)

97.908 TOTAL CONSERVATION AREA (IN HECTARES)

1.813 FOREST PARTNERSHIP (IN HECTARES)

FOREST CERTIFICATIONS
276.317 HECTARES (FSC®)
276.317 HECTARES (CERFLOR/PEFC)

PROJECT HORIZONTE 2 (MATO GROSSO DO SUL)

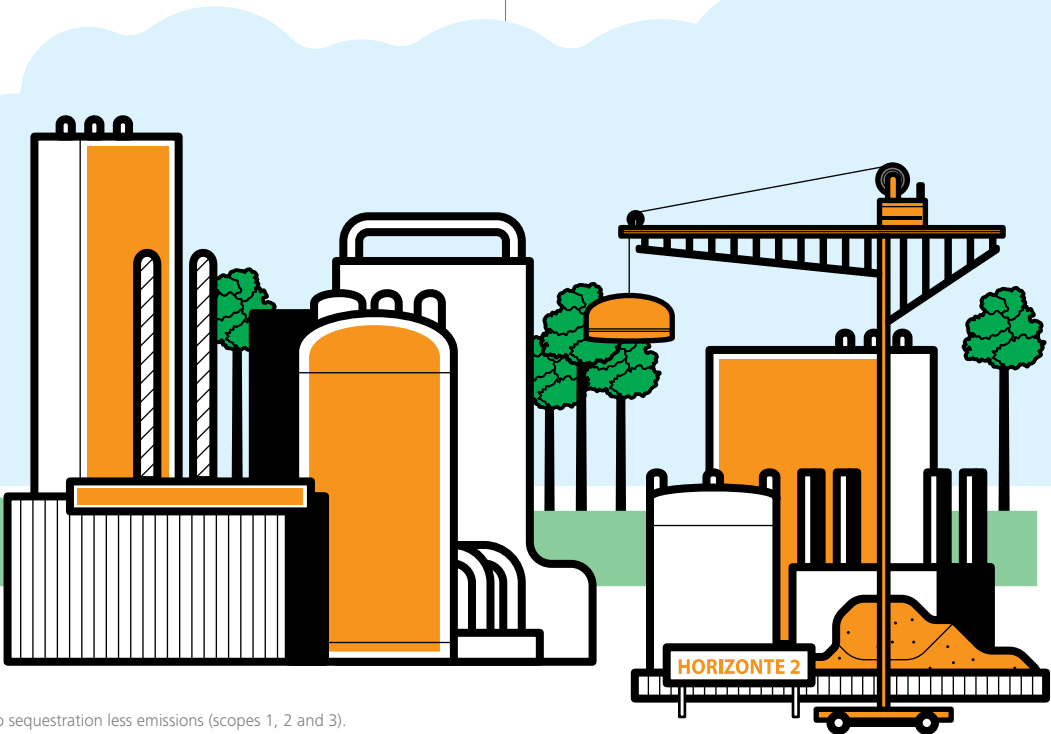
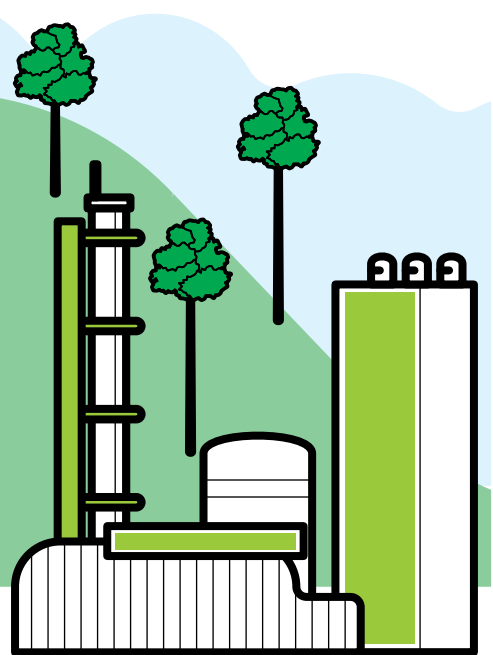
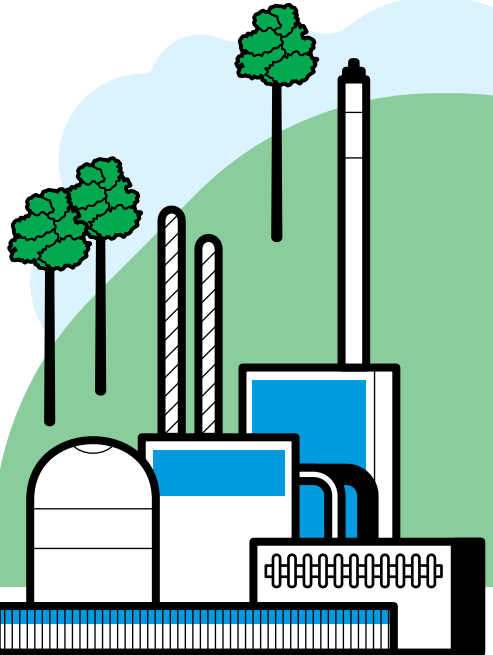
Expansion of the Três Lagoas unit will consolidate our global leadership position in eucalyptus pulp, with total capacity of 7 million tons/year² See project highlights:

1,75 MILLION t/year PRODUCTION CAPACITY FOR HORIZONTE 2

3,05 MILLION t/year TOTAL PRODUCTION CAPACITY (AFTER EXPANSION)

US\$ 2,2 BILLION IS ONE OF THE LARGEST PRIVATE INVESTMENTS IN BRAZIL

120 MWh surplus HORIZONTE 2 WILL PRODUCE AND CONSUME ITS OWN ENERGY, IN ADDITION TO DELIVERING THE SURPLUS 120 MWH FOR THE BRAZILIAN ENERGY BALANCE



1 Includes forestry and industrial operations. 2 For 200,000 hht. 3 The values consider the growth of planted and native forests. The balance is equal to sequestration less emissions (scopes 1, 2 and 3).

From the forest to consumers

Fibria is the global leader in the production of eucalyptus pulp. In 2015, our production totaled 5.2 million tons. Learn about the value chain of our company.

1 Technology Center

Our value chain begins with hundreds of research projects conducted in our forests and laboratories. The research involves improvement in forest management and industrial processes, in addition to studies on wood biorefinery, genetic improvement and biotechnology. In Canada, we develop technology for high-performance lignin



2 Nurseries

Our nurseries produce seedlings for high yield potential planting



120 million
seedlings produced annually



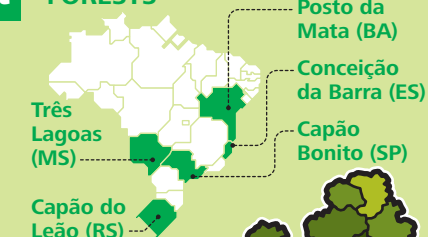
90 to 120 days
is the time required to develop the seedlings

3 Planting and harvest

Eucalyptus plantations help with the conservation of soil, water, biodiversity, and carbon sequestration

5 to 7 years is the growth cycle for eucalyptus trees

FORESTS



FOREST MANAGEMENT

Planted forests and the conservation and restoration of native forests, forming ecological corridors, contribute to the diversity of the landscape. In a rich and diverse environment, for example, planted woodlands are aided by wildlife and plants in controlling pests



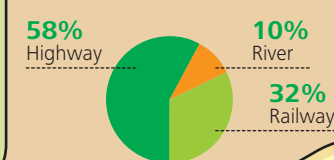
24hrs
In order to supply the industrial units, harvest is done uninterruptedly

The harvest is entirely mechanized, and the use of GPS has contributed to making the process more precise and improved management

4 Logistics of wood

Most of the transportation of wood to the industrial unit is done via highways. We use barges between Caravelas, BA and Portocel, ES, and trains from the partnership areas, in Minas Gerais, up to Aracruz, ES

WOOD TRANSPORTATION MODE

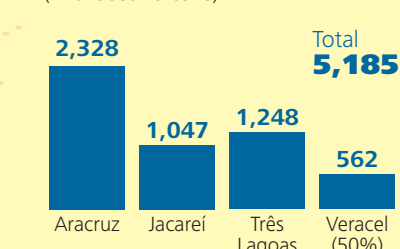


5 Pulp production

When reaching our industrial unit, logs are chopped down into small chips and chemically processed to separate pulp from lignin. The pulp is bleached, dried and bundled for transportation

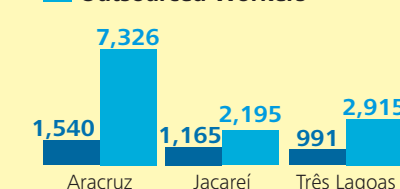
20 eucalyptus trees generate one ton of pulp

Pulp production (in thousand tons)

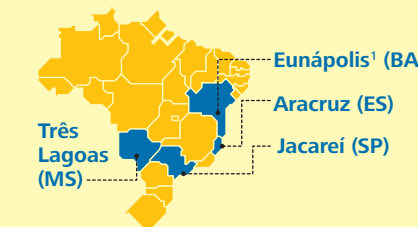


Workers

Own Employees
Outsourced Workers



INDUSTRIES



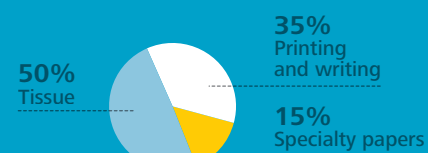
1 Veracel is a joint-venture formed by Fibria and Stora Enso and is located in Eunápolis, BA

7 Commerce and market

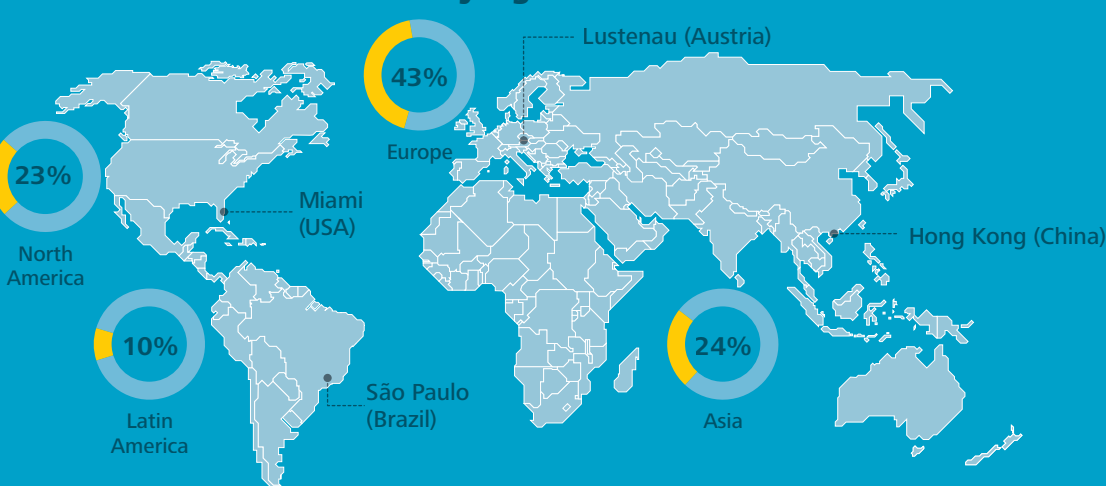
Fibria's pulp is mostly destined to the foreign market, serving large consumer goods companies

84% is the level of satisfaction of our clients

SALES BY END USE



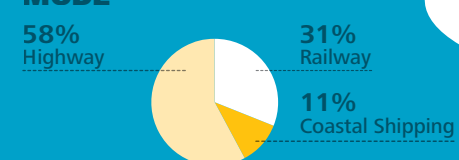
Offices and sales distribution by region



6 Pulp logistics

Pulp produced in Três Lagoas, MS and Jacareí, SP is transported by train to the Port of Santos, SP. Production from Aracruz, ES is taken by truck to Portocel, ES. Fibria's ships deliver 4.6 million tons of pulp per year to clients in Asia, Europe, and the United States

PULP TRANSPORTATION MODE



PORTS





www.fibria.com.br