



Associação Brasileira de Recursos Humanos



ABRH IN BRAZIL

22 sectionals – States:

AL, AM, BA, CE, DF, ES, GO, MA, MG,
MS, PA, PB, PE, PI, PR, RJ, RN, RS,
RO, SC, SE, SP

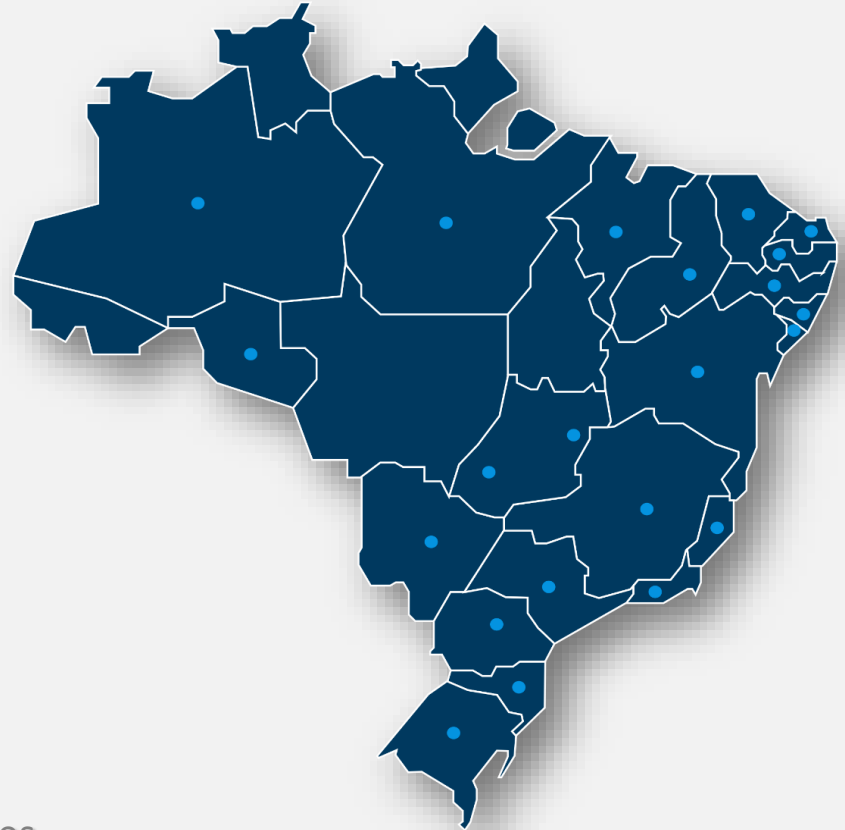
12 THOUSAND ASSOCIATES

International Affiliation:

WFPMA - World Federation of Personnel
Management Associations

FIDAGH - Federación Interamericana de
Asociaciones de Gestión Humana

CRHLP - Confederação das Associações dos Países
da Língua Portuguesa



The Brasil ABRH's Pillars

The proposed Work Plan was based on the Brasil ABRH's pillars

Associativity
Representativity
Sustainability
Visibility

BRAND Platform

MISSION

Fostering an innovative and collaborative community that connects different actors in the labor relations scenario, in order to spread the best practices in people management

We believe that the more people are connected, the better the solutions that are developed.

VISION

Have global representation and be the national reference source for collaborative construction of knowledge and content in people management by 2025.


We want to boost knowledge going forward. For this, we need to establish ourselves as a point of reference in which people trust.

VALUES


These are the values that make up the DNA of ABRH-Brazil. More than merely directing our actions, they define who we are, where we are going and how we get there.



Giving back to Society
Working to change the scenario
We believe that the way we work has enormous potential to change the social, political and economic Situation in Brazil.



Inclusion
Content for all
Our content has no target public and no restrictions. All knowledge and collaboratively produced ideas are democratic and are available to all.



Ethical and nonpartisan stance
Impartiality, transparency and good faith
To promote a community committed to best practices, which makes the best content available to companies and institutions, we must be impartial, transparent and honest.

Connectivity



Connect to share

We want to promote a network of global contacts to facilitate the access of people and businesses to the best practices in people management, facilitating the exchange of ideas and knowledge.

Collaboration



Everyone Involved

ABRH-Brazil emerged collaboratively and still is today. Best practices will only be achieved with the collaboration of all of the people involved.

Sustainable growth



Responsibility to grow

Grow responsibly in order to maintain the quality of our work and continue providing access to services and opportunities for all citizens. Now and forever.

WORK PLAN

The Work Plan is divided in two focal points:

THE SECTIONALS' SUPPORT AND STRENGTHENING

THE BRASIL ABRH's MISSION AND ACTIONS SOLIDIFICATION

THE SECTIONALS' SUPPORT AND STRENGTHENING

To subsidize the Sectionals with the necessary support so that they accomplish their mission in the State.



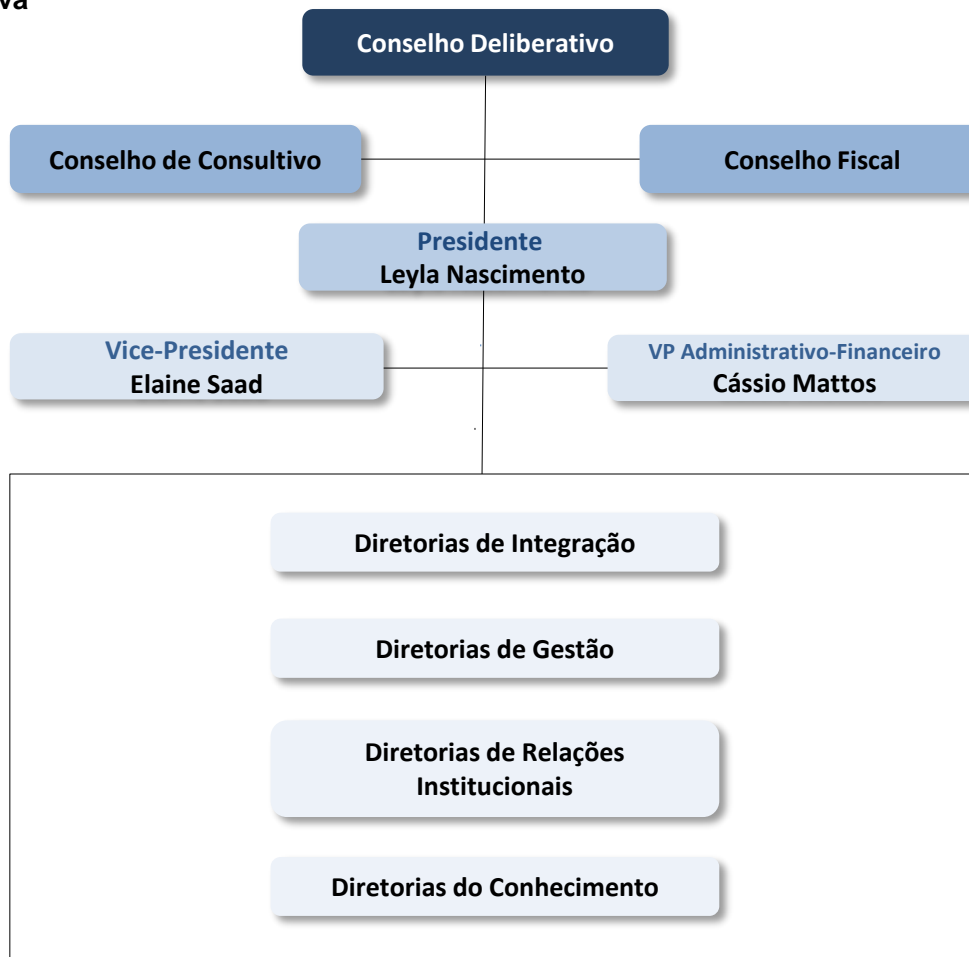


THE BRASIL ABRH's MISSION AND ACTIONS SOLIDIFICATION

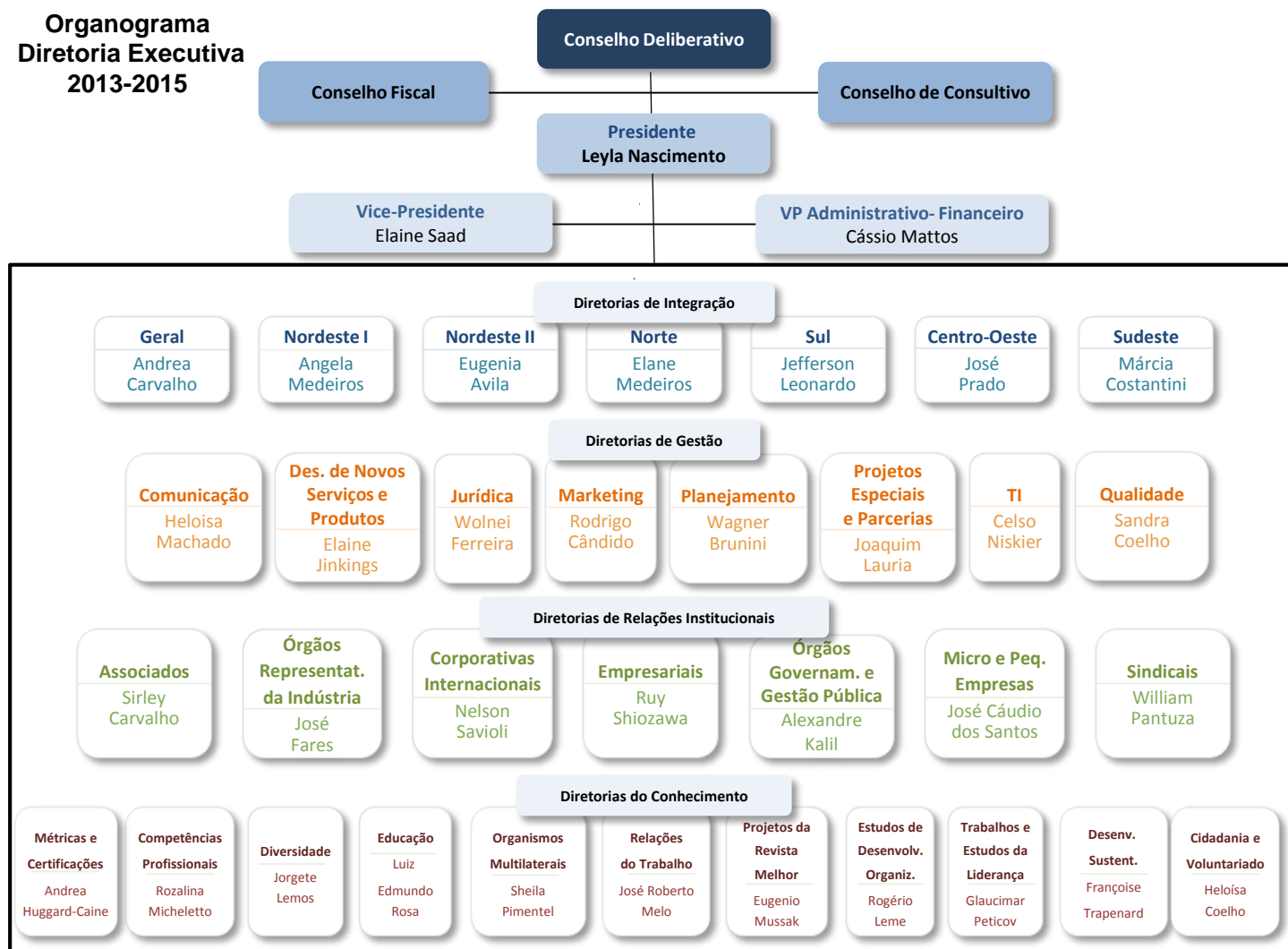
To strengthen the Brasil ABRH from the Sectionals' representativity so that it accomplishes its mission in the Country.



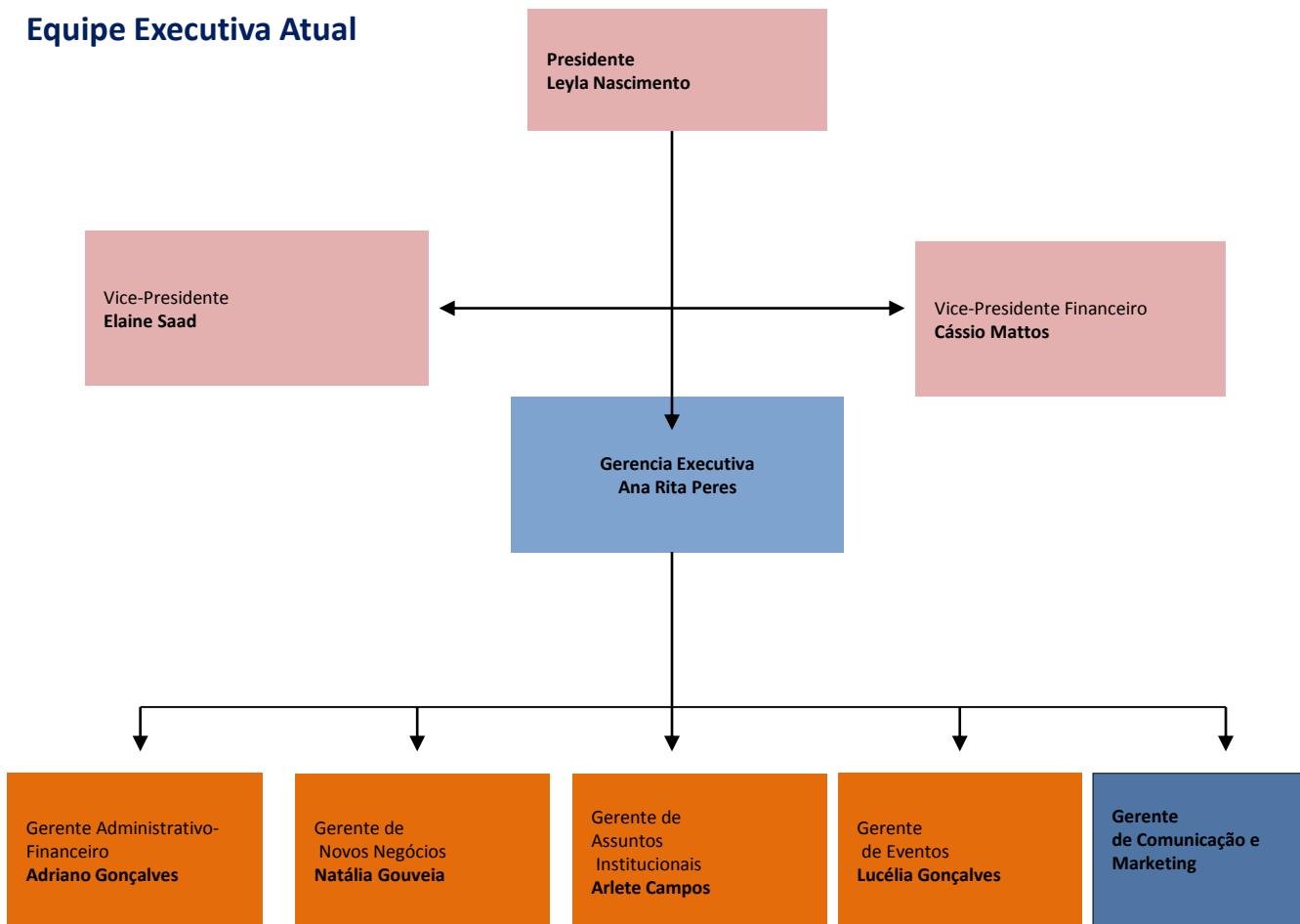
**Organograma
Diretoria Executiva
2013-2015**



**Organograma
Diretoria Executiva
2013-2015**



Equipe Executiva Atual



To this purpose, three supporting forces
were created for each and every pillar



**ABRH
BRASIL**



Associação Brasileira
de Recursos Humanos

THE BRAND VALUE

Institutional Sustainability



VALUE FOR THE ASSOCIATE

Services Excellence



VALUE FOR THE SOCIETY

To make our
Expertise available

BRASIL ABRH'S MISSION AND ACTIONS SOLIDIFICATION
VALUE FOR THE BRAND



BRASIL ABRH'S MISSION AND ACTIONS SOLIDIFICATION

VALUE FOR THE BRAND



ABRH-NACIONAL
Associação Brasileira de Recursos Humanos

busca

Home A ABRH Associe-se Agenda Produtos e Serviços CONARH ABRH Sala de Imprensa Fale Conosco

**A ABRH-Nacional
agora é
ABRH-Brasil!**



Na rede



Enquete

Qual é o percentual de profissionais com mais de 60 anos na sua empresa?

- Menos de 10%
- 10% a 19,9%
- 20% a 29,9%
- 30% a 39,9%
- 40% ou mais

VOTAR RESULTADOS

Notícias

› Inscrições abertas para o 26º congresso capixaba de Recursos Humanos
[Leia mais...](#)

› Lei dos Caminhoneiros é sancionada sem vetos
[Leia mais...](#)

› Hapvida lança projeto social 'Bola para frente'
[Leia mais...](#)

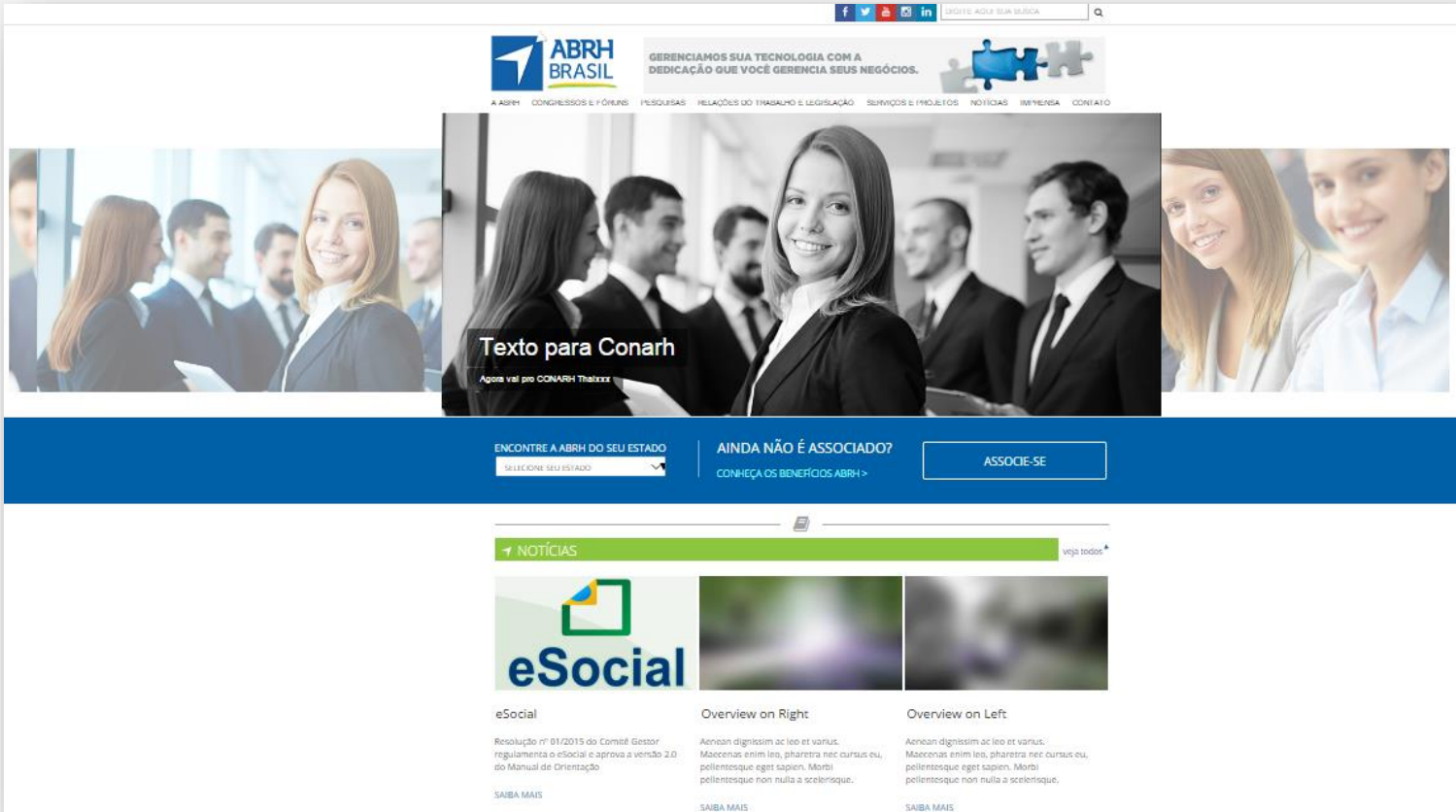
› Mercedes-Benz e Senai formam quase 2 mil alunos na cidade de Juiz de Fora
[Leia mais...](#)

Associe-se



BRASIL ABRH'S MISSION AND ACTIONS SOLIDIFICATION

VALUE FOR THE BRAND



BRASIL ABRH'S MISSION AND ACTIONS SOLIDIFICATION

VALUE FOR THE ASSOCIATE



BRASIL ABRH'S MISSION AND ACTIONS SOLIDIFICATION

VALUE FOR THE ASSOCIATE



CONARH ABRH 2015

A ARTE DA GESTÃO DE PESSOAS
desafios, incertezas e complexidade

THE SECTIONALS SUPPORT AND STRENGTHENING VALUE FOR THE ASSOCIATE

In 2015, ABRH will hold the 41st CONARH, the biggest event of People Management in Latin America and the second most important of the planet.

Rather than designing a showcase opportunities, innovations and technologies, the goal is to bring all participants to a productive moment of network, ideas and knowledge exchange about the most important asset in organizations:
PEOPLE.

It is with responsibility and experience of four decades of dedication to human capital that our journey starts, and we invite you to be part of it.

CONARH 2015

August 17-20 - Transamérica Expo Center (SP)

Attendees: 2800

Visitors: 17.000

Sponsors: 140



THE SECTIONALS SUPPORT AND STRENGTHENING VALUE FOR THE ASSOCIATE



QUER FALAR SOBRE INOVAÇÃO? NOSSO TIME DE PALESTRANTES É MESTRE NO ASSUNTO.

Há 50 anos promovendo mudanças no mercado, a ABRH-Brasil se orgulha de sempre ter buscado inovações para empresas e profissionais. E este ano não será diferente. Confira os grandes nomes que já estão confirmados na edição deste ano do CONARH.



Jorge Jauregui
Presidente da WFPMA



Alexandre Kalache
Presidente do International Longevity Centre Brazil (ILC BR) e Global Ambassador on Ageing do Helpage International



Joe Santos
Professor de gestão global no Insead (França), pesquisador e consultor organizacional com ênfase em integração e inovação globais

Paulo Naliato - Vice-Presidente de RH da Via Varejo
Roberto Dumani - Vice-Presidente Executivo de Desenvolvimento Organizacional da Cielo
Miguel Vives - SVP & Country manager da The Walt Disney Company Brasil

Patrocinada por: **accenture**
...E MAIS!

GARANTA JÁ SUA INSCRIÇÃO!

Venha comemorar conosco os 50 anos do ABRH-Brasil!
17 a 20 de Agosto
Transamerica Expo Center - SP

Mais informações:
www.conarh.com.br
(11) 3138-3420
congressista2015@conarh.com.br

Promoção e Realização: **ABRH BRASIL** Associação Brasileira de Recursos Humanos

Cooperação Institucional: **ABRH SP** Associação Brasileira de Recursos Humanos

Patrocinador Gestão: **Bradesco Seguros**

Patrocinador: **Indústria** Entidade da CNI - Conferência Nacional da Indústria

Diamante Premium: **OdontoPrev**, **glete**, **ValePresente**

Diamante: **Amil**, **CATHO**, **VAGAB**, **COACHING**, **SLAC**

Quir: **Senior**, **FDC**, **Unimed-4**, **ESPM**, **pagga**, **Mackenzie**, **M**, **Rede**

Prato: **LEME**, **Núcleo de Inovações**, **mube**, **LG**, **GVM**, **IPED**, **ICF**, **milli benefícios**, **zetra**



GRANDES NOMES. PALESTRAS INESQUECÍVEIS.

O CONARH 2015 está chegando e nós temos novidades. Grandes profissionais confirmaram palestras no evento e **you não pode perder!**



Dony De Nuccio
Economista e Apresentador do Programa Conta Corrente da Globo News



Fabio Barbosa
Presidente do Conselho da Fundação Osesp



Dra. Anna Tavis
Professora Adjunta da New York University, Consultora Organizacional Sênior e Coach



Mauricio Ceschin
Diretor Presidente da Qualicorp e Membro do Conselho de Administração do Hospital Sirio Libanês

E MAIS:

Ricardo Vescovi
CEO da Samarco

Fernando Salinas
Diretor de RH da Johnson & Johnson

José Roberto Beraldo
Diretor de Finanças e Relações com Investidores da Contax

Fabio Kapitanovas
Head de RH da Ambev

QUER SABER MAIS?

Então **clique aqui** e descubra tudo sobre os temas deste ano e quem mais irá participar do evento.

Promoção e Realização: **ABRH BRASIL** Associação Brasileira de Recursos Humanos

Cooperação Institucional: **ABRH SP** Associação Brasileira de Recursos Humanos

Diamante Premium: **OdontoPrev**, **glete**, **ValePresente**

Diamante: **Amil**, **VAGAB**, **COACHING**, **SLAC**

Quir: **Senior**, **FDC**, **Unimed-4**, **ESPM**, **pagga**, **Mackenzie**, **M**, **Rede**, **RaiaDrogasil**, **IPED**

Prato: **LEME**, **mube**, **LG**, **GVM**, **IPED**



VALUE FOR THE ASSOCIATE -

Accomplishments – CONARH 2015 results



414
matérias
publicadas na
imprensa



Mais de
2.900
downloads
do aplicativo



Mais de
17.000
Visitantes + **140**
Expositores



Base de mais
de **34.000**
e-mails



63 horas de
conteúdos
e palestras



2.800
congressistas

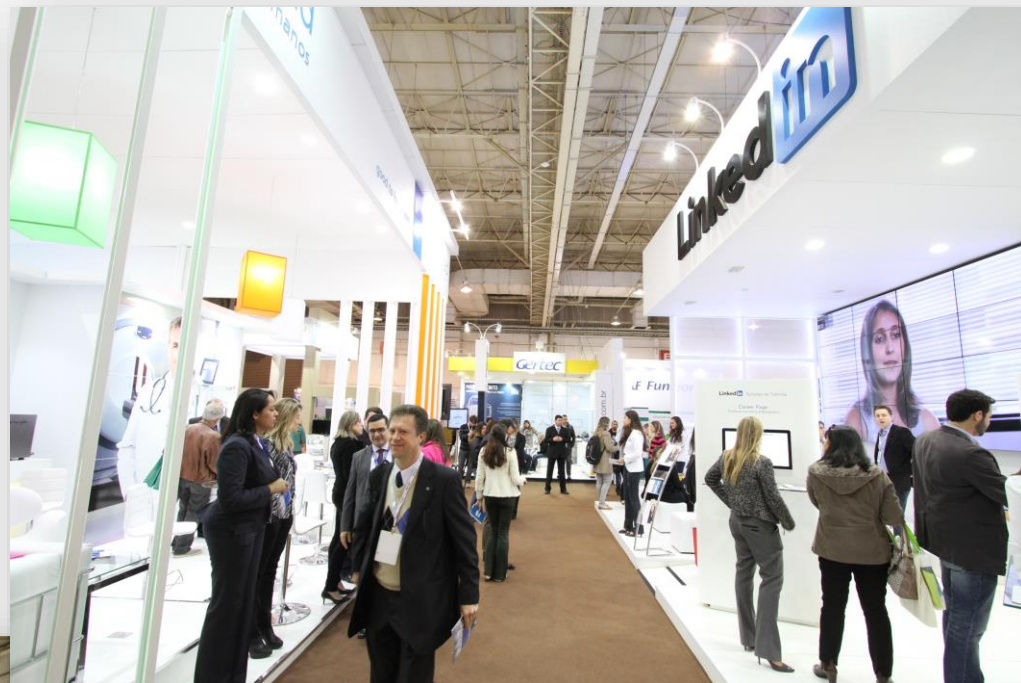


Mais de
100.000 usuários
no site do CONARH

CONARH 2015



EXPO CONARH 2015



EXPO CONARH 2015



NATIONAL ABRH's MISSION AND ACTIONS SOLIDIFICATION

VALUE FOR THE ASSOCIATE

CERTIFICATION PROJECT

The human resources professional's certification is a product that is offered by different countries and in Brazil ABRH is leading this study with a high excellence standard.

OSWALDO CECCHIA HUMAN BEING AWARD

We have established new rules from 2011, and the best Sectionals' companies are automatically conducted to the National Award.

THE SECTIONALS' SUPPORT AND STRENGTHENING VALUE FOR THE SOCIETY

OBJECTIVE

The local Strategic Partnerships strengthening and for the National with public and private representative organizations in Brazil and Abroad.

THE SECTIONALS' SUPPORT AND STRENGTHENING VALUE FOR THE SOCIETY

ACCOMPLISHMENTS - BRAZIL

From December/2010 the partnership with CNI – Confederação Nacional das Indústrias and SESI Nacional was signed.

This is a partnership which involves SESI, SENAI and ABRH with the purpose to accomplish the common objective to contribute to the industrial companies' information, awareness and mobilization process, to defend the workers's best quality of life, his/her professional development and ABRH associates awareness about subjects and themes discussed in this record.



THE SECTIONALS' SUPPORT AND STRENGTHENING VALUE FOR THE SOCIETY

Strengthening of our relationship with FIDAGH, World Federation, SHRM and similar international entities.

THE SECTIONALS' SUPPORT AND STRENGTHENING VALUE FOR THE SOCIETY

ACCOMPLISHMENTS – OTHER COUNTRIES

Formalization of our partnership with SHRM

The CRHLP – Confederação das Associações de Recursos Humanos dos Países da Língua Portuguesa (Portuguese Speaking Countries Human Resources Associations Confederation) was created.

SRHM 2º PARTICIPAÇÃO BRASIL - TOPIC TABLE - SRHM



