

## **Greenland Business Association (GE)**

Communication on engagement

CSR Greenland

June 2013 – June 2015

### **RESUME**

GE is like a national employers' organization very aware of our CSR commitments, including their environmental responsibilities, which builds similar to the overall CSR efforts. Therefore, GE joined the UN Global Compact, the UN program for companies and organizations' social responsibility, which also includes the principles of environmental responsibility

GE as a small office workplace seek environmental projects that fit the type of the kind of business like GE. The majority of domestic companies that are members of GE are very small businesses, which typically will not be space for large reporting or separate resource allocations for CSR and environmental work. It is therefore important that activities makes sense for individual small companies , so these may also contribute to the big picture of environmental efforts in Greenland .

GE is like a national employers' organization very aware of our CSR commitments, including their environmental responsibilities, which builds similar to the overall CSR efforts. Therefore, GE joined the UN Global Compact, the UN program for companies and organizations' social responsibility, which also includes the principles of environmental responsibility.

Despite the Greenland Business is the country's largest employers' organization, the secretariat is a small unit with less than 10 employees. Nevertheless, Greenland Commercial helping to spread awareness of thinking about environmental issues into what they do on a business and societal meaningful way for the benefit of our employees, members, and hence society as a whole.

The adopted environmental policy provides the framework for work on environmental management and the objectives of environmental initiatives. A systematic environmental work will help reduce costs and usage, to attract and retain employees, customers and investors, and to increase cooperation with authorities and suppliers.

Sharing knowledge and experiences with other companies, authorities and organizations, etc. must support our reputation and position as a company that can positively contribute to the development of society, and that may be the trend for other companies in Greenland.

#### *GE CSR strategy*

*"GE wants to promote the principles of Corporate Social Responsibility (CSR) in Greenland. We do this because we believe it is beneficial to both business and society. In other words, CSR is about creating both common value and more value. "*

In GE's definition of CSR is, among other things, that we even appears as a good example of CSR work and provide knowledge and inspiration on CSR, and thereby inspire members to enhance their business. Below, GE, among other work to focus on our own CSR efforts so we can develop the knowledge necessary to function as a best practice example. This can be very beneficial to many of our member companies, including many medium and small enterprises.

Organization of CSR (environmental) work. Work to be environmentally conscious in GE is a common prisoner who everyone in the organization must contribute.

### **1.1 Five steps in environmental management**

In environmental management, work is typically in five steps, which we in GE Secretariat will make use of. However, we must constantly be aware that we, as a small office workplace puts work in simple solutions, so that these are also manageable in everyday life.

### **2. Identification of the GE building's environmental profile**

Data collection will initially be to address mainly energy consumption. The mapping can help identify areas we can address at the same time to form the basis for assessments of our efforts.

Energy consumption	2014	2015	Goal
Electricity (kwh)	9.628,75		
Heating (Kwh)	68,23		
Water (kbn)	171,95		

Data is only from 2014, and 2015 will be collected in the primo 2016, and the main goal will be defined.

### 3. Objectives and Action Plan

GE will spread awareness about thinking environmental considerations into companies' business activities. Here a systematic environmental efforts contribute to the reduction of costs and use of resources, thereby contributing to a better environment.

GE must initiate the sharing of knowledge and experiences with other companies, authorities and organizations, etc., so that they cooperate to support Greenland's reputation and position and contribute to society.

To support Greenland's Enterprise policy has to Secretariat even be active in seeking to reduce the use of energy for lighting, heating and transport. The Secretariat must therefore be a good example to even a small office environment can help to make a difference.

We seek external assistance to identify the areas where we own business can and must put in to make the workplace as environmentally friendly as possible.

GE by the behavior and actions show up as a good example of environmental work and thus contribute to the reduction of CO2 emissions through efforts in the house's energy use and through active evaluating suppliers' environmental profile. The Secretariat will seek to document the environmental concerns, and that the bottom line they could stick together.

Greenland Business will help to develop the knowledge necessary to function as a best practice for companies.

#### 3.1 Action plans

Appendix 1 contains the Blueprint in table form.

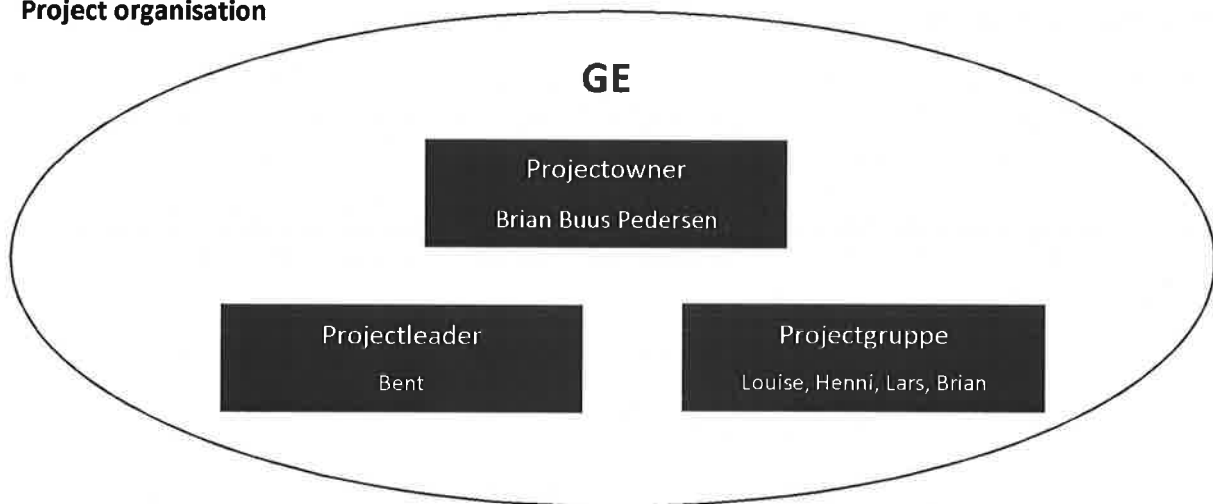
The Action Plan is divided into five main areas, which are

- Gleaning
- Energy - electricity - heat - Transport and Water
- Dissemination of environmental work
- Subcontractors
- Long-term goals

#### 4. Procedures and Instructions

We are in the infancy of our environmental work. Therefore, the environmental group working to come up with evidence of our own environmental work, to present proposals for initiatives and come up with investment recommendations.

#### 3. Project organisation



GE's environmental project is managed by the project management (Project Owner), while the project in cooperation with a possible. Ad hoc group collects and documents the development of the project and process.

#### 6. Follow-up and control

Follow-up environmental efforts must be made each year when the results are compared with our baseline before we started on our efforts. Here you will savings be made up, like not successful activities must either be re-evaluated or closed.

#### 7. Next reporting

Each year, make a report of what happened during the year, and what has been achieved.

## GE – Action plan

GE - Secretary - CLEAN GREENLAND – GREEN COMPANIES

Update:

05.06.2015

## Actionplan

1.0 Cleaning	Status	examined	Responsibility	Milestone	Goal	Deadline
1.1 Print 2 sided for A4 paper - automatic for all	✓	OK	all	OK	Reduction	OK
1.2 GE is part of Saligaatsoq each year	✓	Each Year	all	OK	Participate	OK
1.3 Setting up the bucket below, so we can pick up litter when we see them and throw them in the bucket when we enter.	(✓)	Is on the way	all	OK	Behavior	(OK)
1.4 Collector battery waste (we can also take them home)	✓	OK	BS	OK	Behavior	OK
1.5 Toner for the print – Inuit company reuse the toner for the print	✓	OK	LM	OK	OK	OK
1.6 Coffeemaker - we use coffee pots to keep the coffee fresh that way.	✓	OK	all	OK	OK	(OK)
2.0 Energy - electricity - heat - Transport and Water	Status	examined	Responsibility	Milestone	Goal	Deadline
2.1 Computerscreen switch off automatically	✓	Automatically	all	OK	Reduction EL	OK
2.2 The light in the meeting room should not be double illuminated more	(✓)	Behavior	all	OK	Reduction EL	(ok)
2.3 Use of LED lights, with continuous replacement	løbende	continuous replacement	all	Continuous	Reduction EL	Continuous
2.4 Behavioral Adjustment - off the radiator when the window opens	(✓)	Behavior	all	Continuous	Reduction off loss of heat	Continuous
2.5 Heating - day and night setback	Stopped	To expensive	all	OK	Examined	OK
2.6 Water – WC water (small/bigger)	(✓)	continuous replacement	all	Continuous	continuous replacement	Continuous
2.7 Lightcensor - investigated	Not startet	to be investigated	all	BC	Reduction EL	ultimo 2015
2.8 Kettle use, it may be these need to be replaced	løbende	continuous replacement	all	BC	Reduction EL	Continuous
2.9 Windows - insulation of windows with cold use (to be examined)	(✓)	to be investigated	LK/BS	BC	Reduction EL	ultimo 2015
2.10 Insulation in general (to be considered for . Mapping by the preparation to the leadership we need to start studies), consult with 2.9	(✓)	Undersøgelse i gang	LK/BS	BC	Reduction of energy	ultimo 2015
2.11 Cost of solar energy - hard to achieve CO2 savings from Hydropower plant we have here in Nuuk	Not started	?			Reduction of energy	?
2.12 New refrigerator, if necessary - energy class A +++	(✓)	continuous replacement			Reduction of EL	?
2.13 Temperature control, we need plain room temperature	See 2.10	2-10			Reduction of energy	?
2.14 Transport : Considering about electric car use, including running together for meetings	✓	OK	all	OK	Reduction CO2	OK
3.0 Dissemination of environmental work	Status	examined	Responsibility	Milestone	Goal	Deadline
3.1 Preparation of Avatangiserik poster	✓	Supported	Management	OK	Poster is made	OK
3.2 Strategy must be a theme meeting house here in GE						Ultimo 2015?
3.3 Strategy Launch						
3.4 Evaluation						
4.0 Subcontractors	Status	examined	Responsibility	Milestone	Goal	Deadline
4.1 Suppliers must work with CSR, therefore, we will eventually be able to ask for corporate environmental profile	Not started					2016?
4.2 The use of detergents will also be a theme	Not started					2016?
5.0 Long-term goals	Status	examined	Responsibility	Milestone	Goal	Deadline
5.1 Genvex (invest in Genvex - We need to make BC)	Not started					2016?
5.2 The use of recycled paper	Not started					2016?

