



Arthur Calasans

Arthur Calasans

Acervo estudo
Biodiversidade de
Polinizadores e Avifauna

Felipe Abreu / RBPG

2014

Activity Report



FUNDAÇÃO
ESPAÇO ÉCO
Sustentabilidade que se mede

Established by:



NAVIGATION
 ↓
 ↓
 ↓

Presentation



Financial Performance

Credits

Summary

Presentation	3
Socio-Eco-Efficiency.....	7
Environmental Conservancy	13
Educative Programs	19
Governance.....	27
Communication / Engagement	31
Innovation	38
Excellent Team	41
Financial Performance	47
Credits	50

NAVIGATION



Presentation



Financial Performance

Credits

Presentation

Dear Friends,

We are focused on our mission of sharing knowledge and carrying out comprehensive, integrated work. Our main goal was pursued throughout 2014: to work as a transformation agent, capable of stimulating value protection and generation through educational programs and scientific methodologies that measure and assess sustainability, serving both society and businesses.

We operate in a challenging area for business people and society. In 2014, here at the Espaço ECO® Foundation, through so many deliveries and reflections, we came to a conclusion: the harsher the macroeconomic scenario, the more important applied sustainability is to help leaders in their decision-making processes.

You are getting our 2014 Activity Report, in which you will see that, despite being a difficult year for the industry sector, as it was severely impacted by economic retraction and political turmoil in the region, we were still able to finish more Socio-Eco-Efficiency and Life Cycle Assessment (LCA) studies than we did in previous years. Not only did the Espaço ECO® Foundation conduct more studies, their overall quality is constantly improving every year, as we continue to invest in team development – we had an exchange program with applied sustainability specialists at BASF Germany – and work to improve our delivery time, while also generating more and more impact with their presentation.

We strengthened our relationship with researchers, universities, and business schools, and were closer to clients and the market as a whole. We supported applied research at NEXT, an observatory on sustainability trends established by consulting firm Ideia Sustentavel. We created opportunities to present our successful cases at scientific congresses, talks, and meetings – spreading our

experience using sustainability management tools, in addition to developing environmental conservation and educational projects to protect biodiversity and water. The Mata Viva® Environmental Conservation and Education Program, for example, just finished a trailblazing study on ‘Biodiversity,’ conducted with the Sao Paulo State University (UNESP), which shows evidence that technified farming can live in harmony with restored native vegetation areas, improving pollinator and avifauna biodiversity.

Mata Viva®’s continuous purpose is to meet clients’ needs, so in 2014 it went in a new direction to expand its scope in the future. Not only it will conduct the diagnosis and adequacy of degraded areas at farms, but also intends to expand the scope of its environmental services, helping cities and micro-regions in Brazil with territory management and their environmental conformity process. The Rural Environmental Register (Portuguese acronym CAR) and our participation in the Water Producer Program, working with the concept of payment for environmental services, were some of the things the FEE® focused on in 2014.

We are very proud of our accomplishments and we are sure we are making a significant contribution to improve businesses and society.

I hope you enjoy reading this.

Rui Goerk
President of the Board of Trustees

Roberto Melo de Araújo
Chief Executive Officer at the Espaço ECO® Foundation



NAVIGATION



Presentation



Financial Performance

Credits

Mission

To promote sustainable development in the business environment and the society, by sharing knowledge and technology, especially through the application of solutions in Socio-Eco-Efficiency and education for sustainability, focusing on the balance of social, environmental and economic aspects.

Vision

To be recognized as a center of excellence in applied sustainability in Latin America.

Values

- Ethics
- Integrity
- Commitment to innovation
- Professional & personal competence
- Respect towards people and the environment
- Commitment to sustainable development



The Espaço ECO® Foundation (FEE®)

2005 to 2013

2014 Results

67 Eco-Efficiency, Socio-Eco-Efficiency, and carbon footprint analyses and other methodologies.

+13 analyses
(+18%)



316 k people benefited from all FEE® activities.

+56,567 people
(+18%)



Of those, **over 2 k are teachers and 137 k are students** at public schools.

+233 teachers
(+11.1%)
+50,322 students
(+36.5%)



Environmental restoration in **85 municipalities**, with over **1,083 million** native seedlings planted in **656 hectares**.

+10 cities
(+11,7%)
19,990 seedlings
12 hectares
(29.6 acres)



NAVIGATION



Presentation

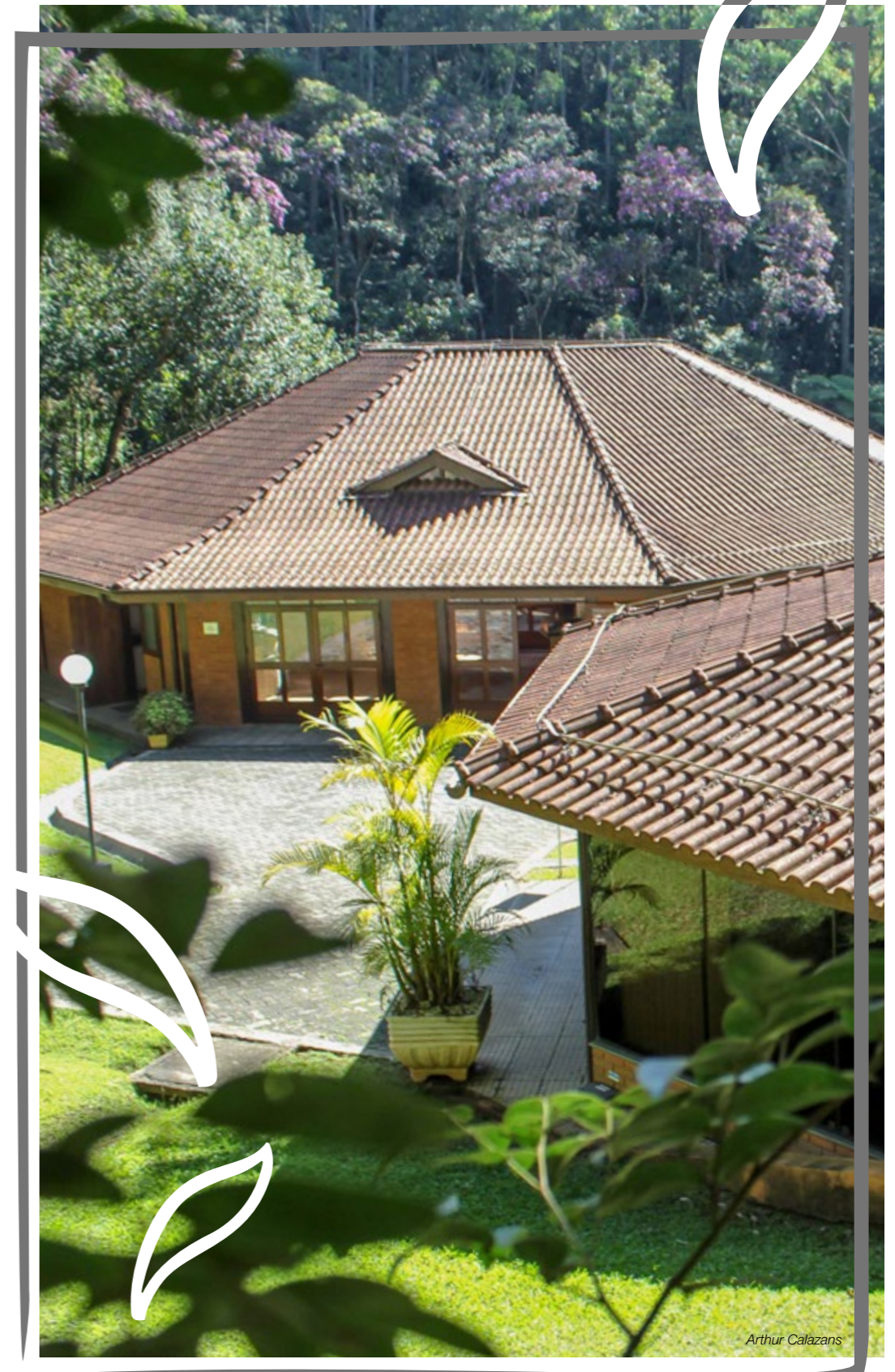


Financial Performance

Credits

2014 Highlights

- 13 Eco-efficiency, Socio-Eco-Efficiency, and carbon footprint analyses and other methodologies finished.
- 56,567 people benefited from all FEE® activities.
- 233 teachers and 50,332 students at public schools.
- 30 municipalities impacted by FEE® actions.
- Environmental restoration in 10 municipalities, with over 19,990 native seedlings planted in 12 hectares (29.6 acres).
- 54 people benefiting from sustainable management programs for small and medium farms.
- 217 people benefiting directly from the FEE®, with surveys by NEXT – Observatory on Sustainability Trends: 8 sustainability trends for small and medium businesses, 10 sustainability trends for HR, and 7 health and sustainability challenges.



NAVIGATION
 ▼
 ▼
 ▼

Presentation



Financial Performance

Credits

Clients

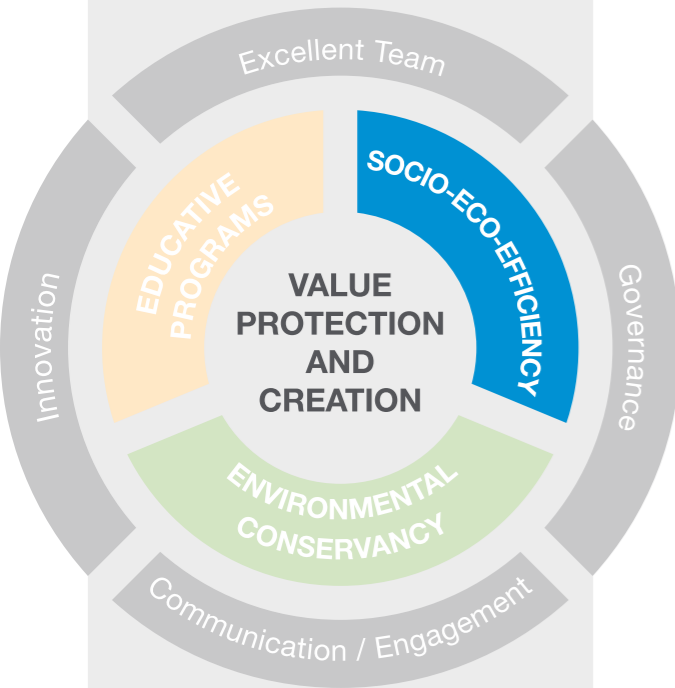


Partners



NAVIGATION
v
v
v

Presentation



Financial Performance

Credits



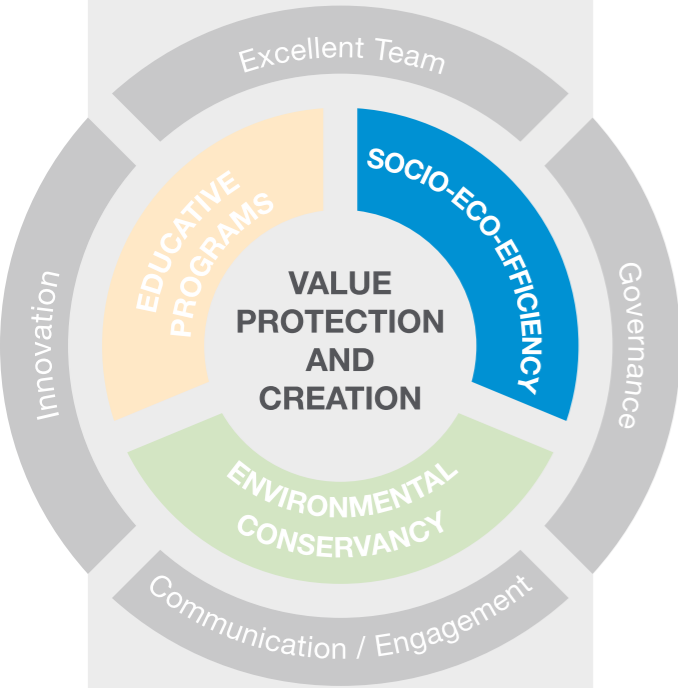
Socio-Eco-Efficiency

Information generated by the FEE® team in 2014 and the 13 studies we finished – 18% more than the previous year – have influenced the supply chain of major industries in Brazil's economy, such as mining, agribusiness, chemical industry, and packaging. The HotSpot Analysis (HSA) methodology, which intends to understand

the critical aspects regarding sustainability in a given industry by reviewing publications and interviews with external agents, has been effectively applied and enabled a better understanding of all the links within a supply chain and the role played by each stakeholder, directly impacting results where this tool was used.

NAVIGATION
v
v
v

Presentation



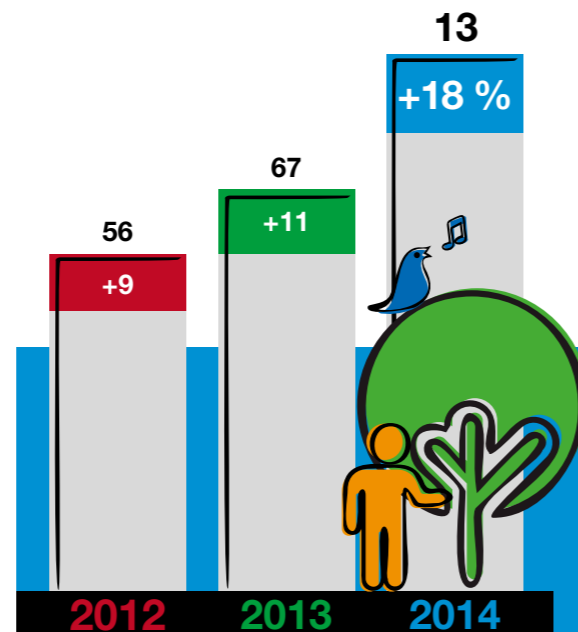
Financial Performance

Credits



Integrated excellence

The FEE® team specializing in communication offered inputs to studies, leading to an innovative communication. Technical data were translated into a more friendly language, using infographics and other more illustrative formats. With better communication, Socio-Eco-Efficiency contributes to bring sustainability closer to society while educational actions complemented measurement studies. This integration between the Socio-Eco-Efficiency team and education experts was assertive to get those involved engaged and consequently help them better understand the concepts.



18% more studies than all previous years added up (2012-2013)

13 Eco-Efficiency, SEEBALANCE®, and AgBalance™ Analyses finished



NAVIGATION



Presentation



Financial Performance

Credits

Studies

Studies commissioned by our clients or partners and carried out by the FEE® team. As they are exclusive projects, results are usually confidential and protected by confidentiality agreements.



Demarchi + Ecoeficiente

An internationally renowned, trailblazing initiative in the chemical industry, the Demarchi + Ecoeficiente program (“A More Eco-Efficient Demarchi”) brings together Eco-Efficiency Analysis and environmental education, in line with BASF’s global strategy. The second phase of the program wrapped up in 2014. Its goal was to pinpoint the environmental and economic impacts directly generated by Demarchi’s operations at its plant and the pre-chain of raw materials and inputs it uses, in order to assess performance development and identify improvement opportunities in 2010 through 2012.



This project earned BASF acknowledgment by EXAME Magazine’s Sustainability Guide as one of Brazil’s most sustainable chemical companies. It also featured the United Nations Development Program – UNEP “Guidance on Organizational Life Cycle Assessment,” which referred to the project as a synonym for innovation and pioneering.

In 2015, the study will continue, including the years 2013-2014. It will also deliver a managing platform where the plant will be able to add and carry out their own eco-efficiency simulations.

Sustainability assessment of irrigated rice farming using the CLEARFIELD® System and the Condessa System

The study’s challenge was to demonstrate the social, economic, and environmental benefits of combining the CLEARFIELD® and Condessa systems in irrigated rice farming in the Brazilian State of Rio Grande do Sul. It compared crop figures with these two systems combined and the State’s average crop results in 2004 / 2005, 2012 / 2013, as well as their development throughout these years using the AgBalance® tool. The HotSpot Analysis (HSA) methodology was also used to understand the critical sustainability-related aspects in the rice production chain.



NAVIGATION



Presentation



Financial Performance

Credits



Windows – production, performance, and energy efficiency

The Eco-Efficiency Analysis commissioned by the PVC Institute intended to verify the most eco-efficient option – PVC windows or aluminum windows. The study assessed their environmental and economic impacts in terms of window manufacturing technology performance, from extracting

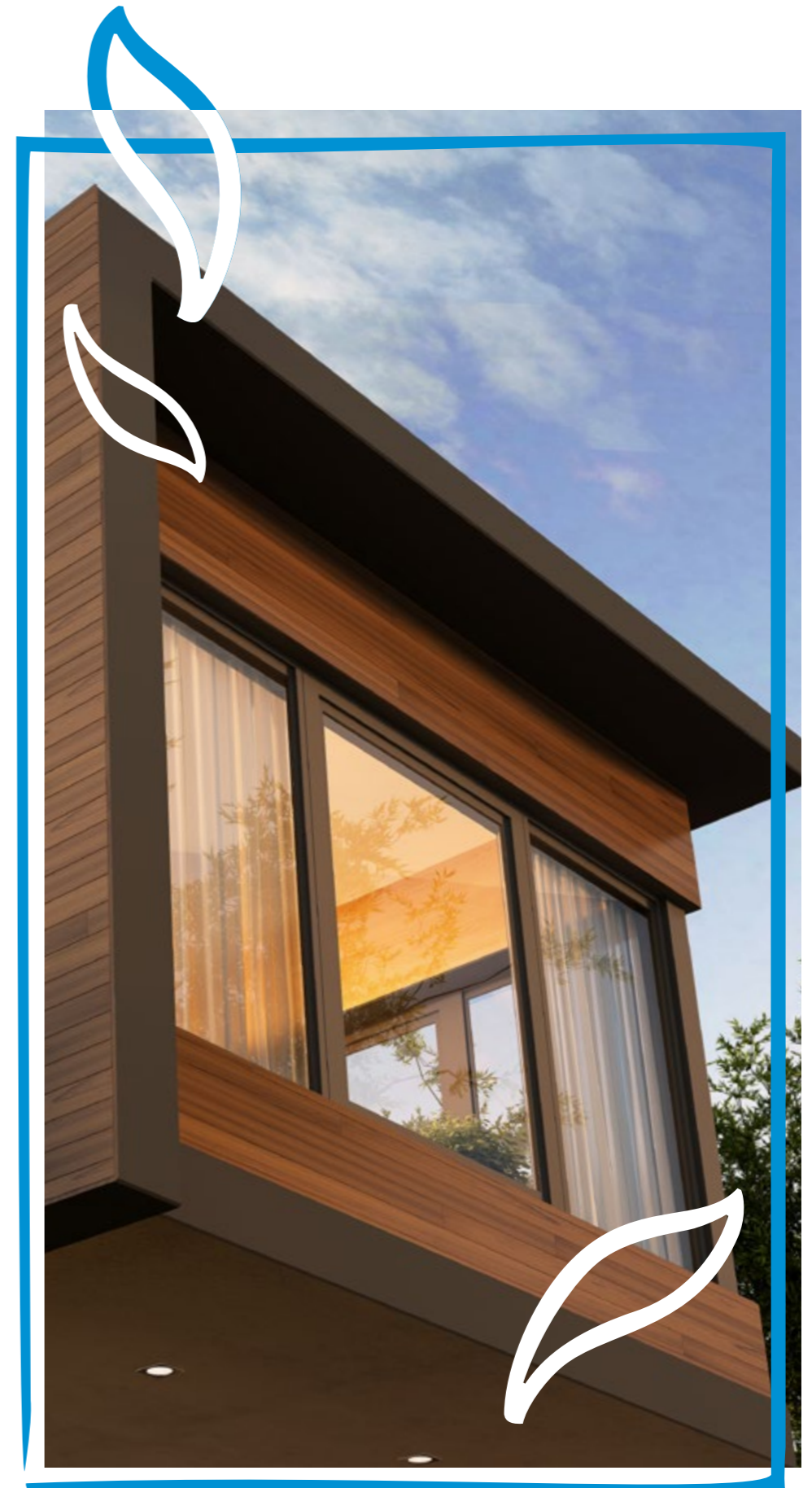
the necessary raw materials to installation and use, taking into consideration performance and thermal insulation, up until their final destination after 40 years. Economic impact analysis also considered the windows' market price and the cost of air-conditioner power consumption.

Socio-Eco-Efficient Steam Generation

The study intended to compare the social, environmental, and economic performance of different fuels

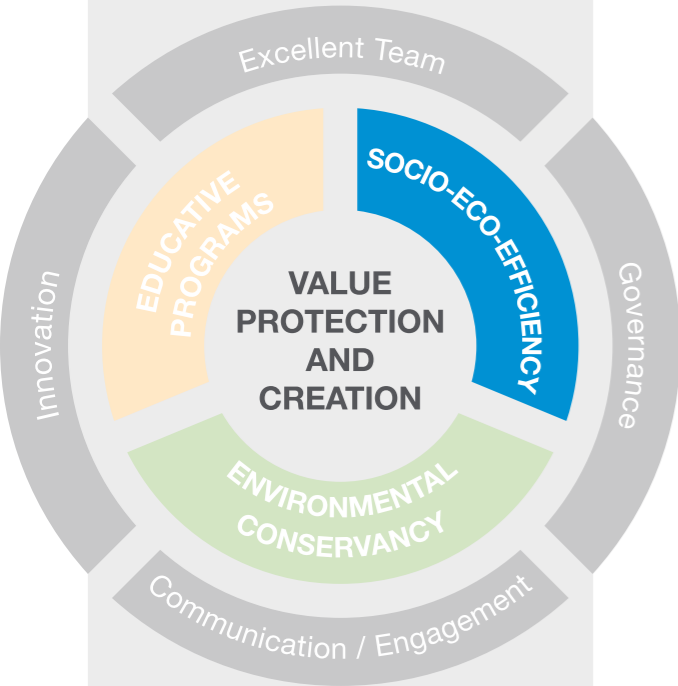


in generating super-high pressure steam, according to the steps recommended by rules and regulations at Braskem's manufacturing plant located in Triunfo, Rio Grande do Sul State. It used the SEEBALANCE® tool, or Socio-Eco-Efficiency Analysis, and the scope of work included performance comparisons of the major lifecycle stages of five fuel alternatives: Coal, Natural Gas, Low Sulfur Oil, Residual Fuel Oil, and Eucalyptus Biomass.



NAVIGATION
V
V
V

Presentation



Financial Performance

Credits

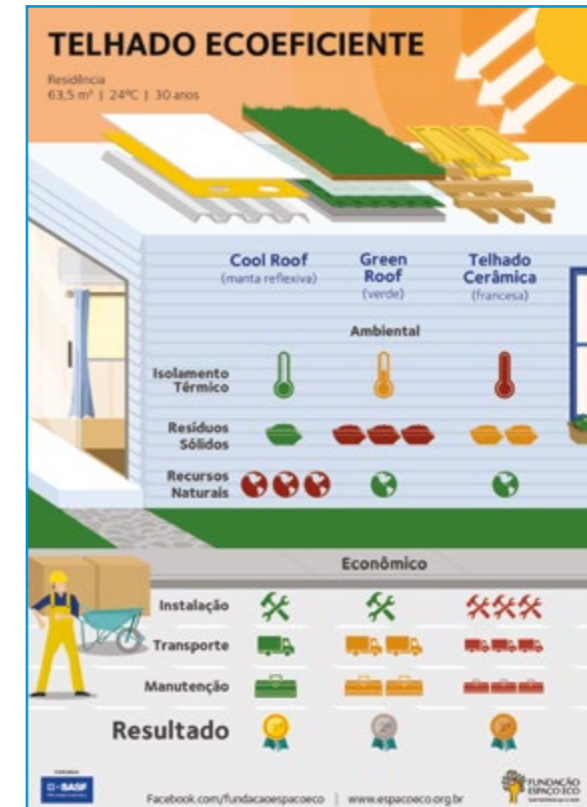
Actions of public interest



Eco-Efficiency Analysis for house coating

The Espaço ECO® Foundation conducted this study from two bills which intend to relieve phenomena such as heat islands and urban runoff (Brazilian Acts 615/2009 “Redução das Ilhas de Calor” – “Heat Island Reduction” and 115/2009 “Redução das Ilhas de Calor e Run Off” – “Heat Island and Runoff Reduction”). It assessed the environmental and economic impacts related to residential coating performance, considering internal temperature maintenance at 24°C-75.2F for 30 years.

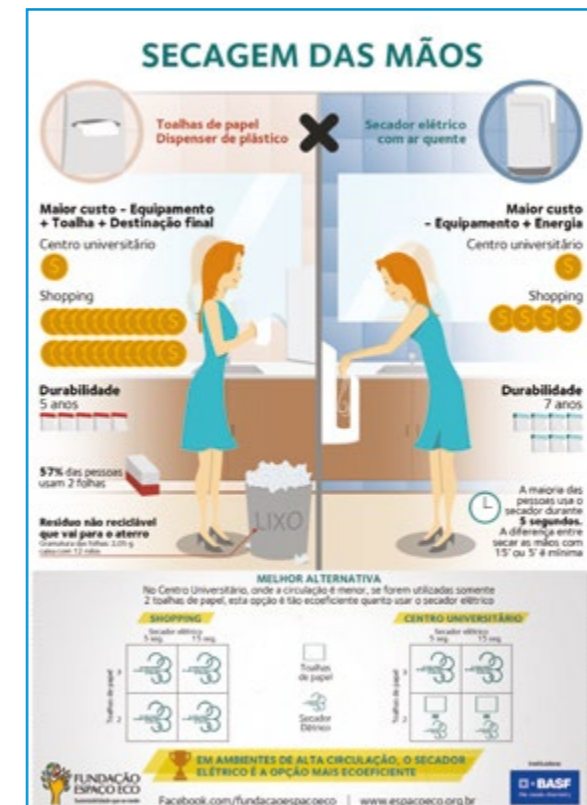
Environmental and economic impact analysis encompassed from input and raw material extraction to coating production, installation, and actual use. The analysis considered three alternatives: ceramic roof, vegetation cover (green roof), and reflective roof covering.



Hand Drying Eco-Efficiency Analysis

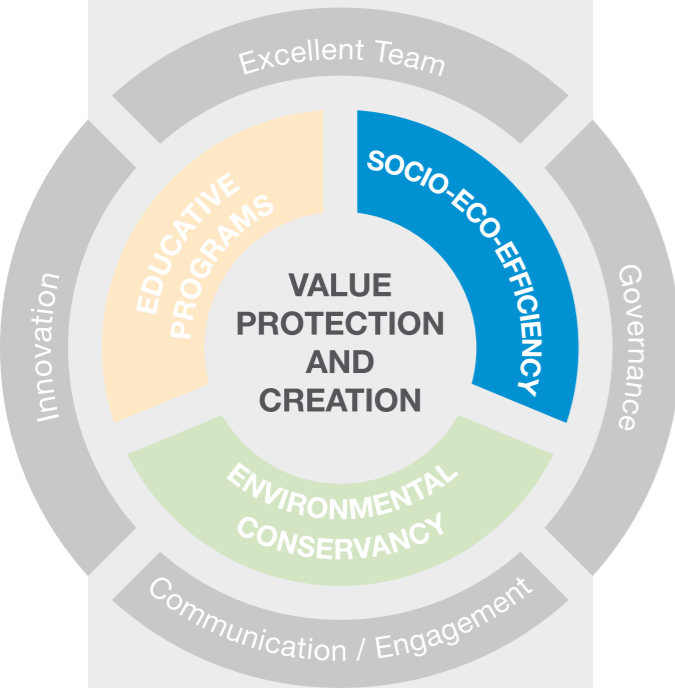
To meet the legal requirements in effect regarding solid waste reduction and control, as well as society’s interest in more sustainable options in everyday activities, this study compared hand drying alternatives for public restrooms.

The alternatives surveyed are based on either of two technologies: electric warm air dryer or plastic dispensers with paper towels. We carried out analysis at a Shopping Mall and a University Center in the city of Santo Andre, Sao Paulo State, with 2013 data. In addition to the basic analysis, we created a scenario to compare economic and environmental performances, inserting the recycling process as final destination of the cardboard boxes used for paper towel transportation.



NAVIGATION
v
v
v

Presentation



Financial Performance

Credits

Actions of public interest

Coffee Maker Costs

The Espaço ECO® Foundation also carried out a Total Cost of Ownership (TCO) in 2014, a methodology based on the Life Cycle Assessment (LCA) of a product or service, considering acquisition, property, operating, and maintenance costs over its life cycle. The project intended to estimate the TCO of coffee cups at the FEE® made both from coffee machines and drippers, analyzing all costs involved, from the necessary purchases to the final discard of each material.

Sustainable Farm Awards

The Sustainable Farm Awards is an initiative by Globo Rural Magazine, the Espaço ECO® Foundation and Rabobank Group, and it was established to recognize farms with sustainable practices. Its second edition evaluated 124 entries according to the sustainability performance criterion, based on the eco-



efficiency methodology, and analyzing elements such as payments to farmers, properties' social and environmental risks, and their contribution to improve the quality of life and reduce environmental impacts. The Awards Ceremony of the second edition will be held in July, 2015.

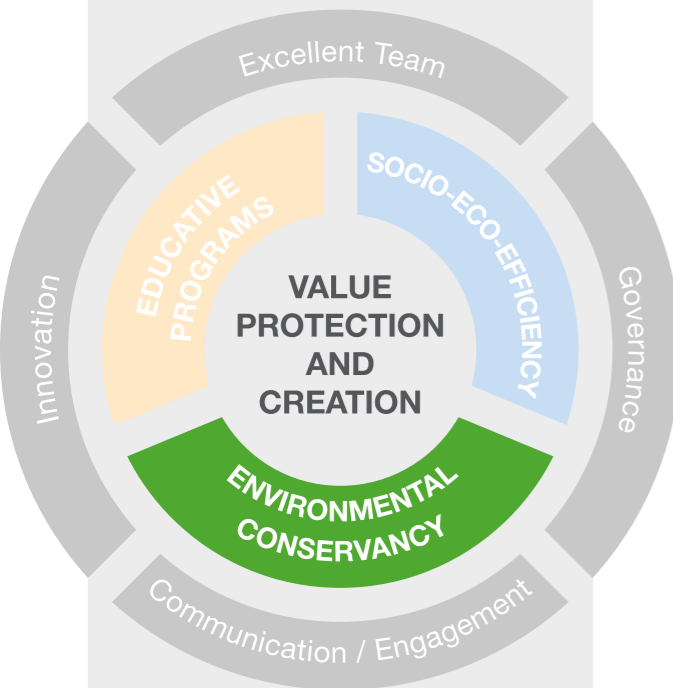


Sustainable Farm Awards

NAVIGATION



Presentation



Financial Performance

Credits

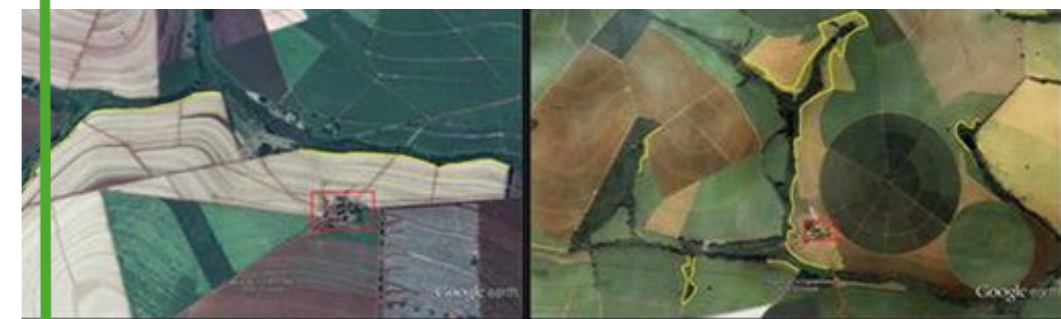
Environmental Conservancy

Environmental conservancy initiatives are a key part of the Espaço ECO® Foundation's strategies and work. Not only we had planted over 1 million native seedlings by 2013, but we also added other solutions to our portfolio in 2014. The changes intend to contribute even further to FEE® partners and clients.

A team who is open to innovation, they gladly welcomed this change of scope. Feeling motivated as they expanded to new direct services – for farmers, cooperatives, and businesses interested in sustainability –, they all started to work under what was then called the Environmental Conservancy area. Their actions aim at environmental compliance, management, and monitoring, bringing together conservation and productive activities.

The solutions developed in 2014 include environmental adequacy and restoration, riparian zone and river source restoration in the Atlantic Forest and Cerrado biomes, environmental reports, and rural property regularization, in addition to the Espaço ECO® Foundation's traditional efforts of interconnecting activities with social and environmental education.

All activities carried out by the FEE® brought benefits to biodiversity, drawing new species to the areas and contributing for richer forest diversity, soil diversity and quality, and protection of river and stream banks. The study measured bird and pollinator biodiversity in three farms that benefited from the FEE®'s environmental restoration actions; 50 bee species and around 160 bird species were found, among which eight are considered to be endangered to some degree in the State of Sao Paulo.



NAVIGATION



Presentation



Financial Performance

Credits

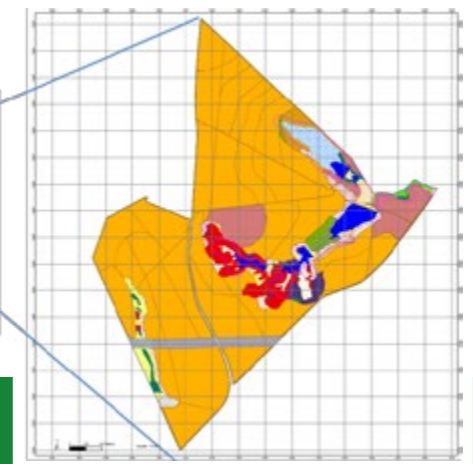
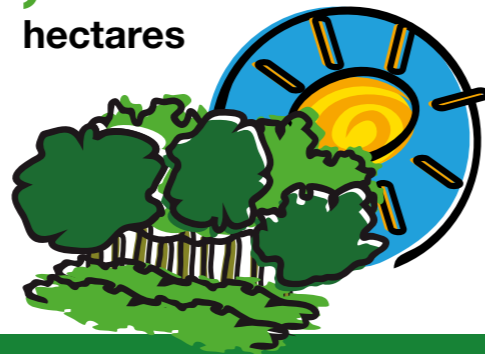
Faster environmental diagnosis

This research methodology is based on field evaluation and geoprocessing analysis and allows us to assess, measure, and propose solutions to take corrective measures and recover environments facing physical and biological degradation. In 2014, diagnosis deliveries were faster and with greater technical quality. Professionals are increasingly specializing in and dedicated to each work, and value the feedback they get from diagnoses during on-site meetings with clients – land owners, cooperatives, and others. These meetings not only help the FEE® share our knowledge with them, but also have them share with our team, building a space for communication and translating technical language into useful, easy-to-understand information.

Five total cooperatives and one agricultural experiment station made their environmental diagnosis:

- 🌿 **Sugar Cane Growers Cooperative of Sao Paulo (Coplacana)** in 2,285 hectares (5,646 acres)
- 🌿 **Agroindustrial Cooperative (Coplana)** in 1,702 hectares (4,205 acres)
- 🌿 **Farmers Cooperative (Coopercitrus)** in 6,777 hectares (16,746 acres)
- 🌿 **Farmers' Agroindustrial Cooperative of Southwestern Goias (Comigo)** in 2,745 hectares (6,783 acres)
- 🌿 **Farming Cooperative (Camda)** in 6,220 hectares (15,369 acres)
- 🌿 **Environmental Agricultural Station of Santo Antonio de Posse (SP)** in 114 hectares (281 acres)

19,843 (49,033 acres)
hectares



19,843 hectares (49,033 acres) diagnosed in 2014

Geoprocessing Lab

🌿 *It was an honor to be selected to join such an important project. The FEE®, BASF, and Coopercitrus are really serious about what they do and that was clear in the field. Now that the first step is over, we are focused on our final goals: to know what we have, fill the CAR (Rural Environmental Register), and start putting the technical recommendations into practice to have our property environmentally compliant.* 🌿

Paulo Sader, Coopercitrus member who benefited from environmental diagnoses

NAVIGATION



Presentation



Financial Performance

Credits

Restoration & Maintenance

In 2014, 10 municipalities with approximately 20,000 hectares (49,421 acres) were impacted in terms of diagnosis projects and environmental restoration, and 19,990 native seedlings were planted. This process is crucial to recover biodiversity and environmental services related to soil conservation and water resources, and it is essential to comply with current environmental law. Intending to assist land owners to comply with the New Forest Code, the Espaço Eco® Foundation also started working more actively on fauna and flora biodiversity survey, writing technical reports focused on issuance of environmental and operating licenses by the Sao Paulo State Environmental Agency (CETESB) and the Prosecution Office.

Among FEE® actions, we highlight the work we carried out for BASF in Jacareí, Sao Paulo, the new Forest Land Use Plan (PDF in the Portuguese acronym) developed along with the BASF Site – Guaratingueta, and the required environmental reports at the Santo Antonio de Posse Experiment Station to get an operating license.

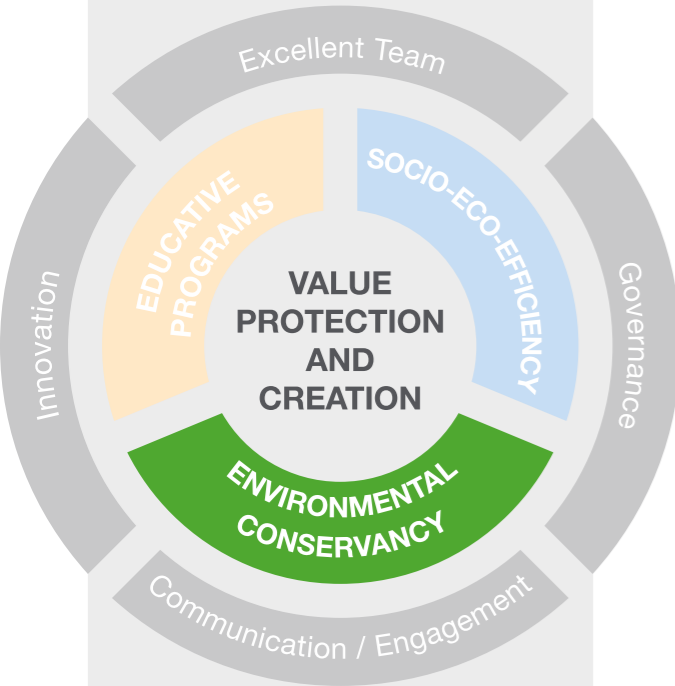
BASF – Jacareí

This project's intention was to meet a demand for planting 5,990 seedlings by the Paraíba do Sul River, in Jacareí. In this proposal, actions intended to promote plant and animal biodiversity conservation and maintenance, water resource conservation, creating green corridors, and local ecological process restoration.



NAVIGATION
v
v
v

Presentation



Financial Performance

Credits

Santo Antônio de Posse

Intending to meet local demands for structure expansion, the necessary environmental licensing process to proceed with the construction work required an environmental report outlining the isolated trees and vegetation on the property. So the Environmental Conservancy team wrote all relevant reports, thus contributing to develop and meet all environmental regulations.



Forest Land Use Plan (PDF)

In 2010, once again BASF partnered with the Espaço ECO® Foundation and started a Biomass measurement study on the sequestered Carbon in the reforested area by the Paraíba do Sul River, adding up to 128 hectares (316 acres), at the industrial complex in Guaratingueta. The study found carbon fixation was reducing, especially due to invasive exotic species that were starting to colonize the area.

This conclusion led to the Forest Land Use Plan, an initiative to remove those invasive exotic species, thus eliminating degradation factors, and

planting native species in the same place. By the end of this project, we intend to plant more than 55,000 native seedlings. In 2014 alone, 14,000 seedlings were planted.

This is a voluntary initiative intended to recover the area and have sustainable vegetation development, thus leading to a future where new interventions will not be necessary, recovering a self-perpetuating biodiversity and promoting the conservation of Paraíba do Sul River's banks.

NAVIGATION



Presentation



Financial Performance

Credits

Continuity

In 2013, the Mata Viva® Education and Conservancy Program promoted a carbon offset initiative focused on gas emissions by Unidos da Vila Isabel Samba School and Recreational Society as they prepared for and paraded at Rio de Janeiro's Carnival. The school won the competition in 2013 in partnership with BASF and planted 7,000 native seedlings, an area as big as 4.2 hectares (10.3 acres). In 2014, the Espaço ECO® Foundation was in charge of inspecting these areas to check for seedling development, analyzing activities such as cleaning in the surrounding areas, degradation factor elimination, and leafcutter ant control.



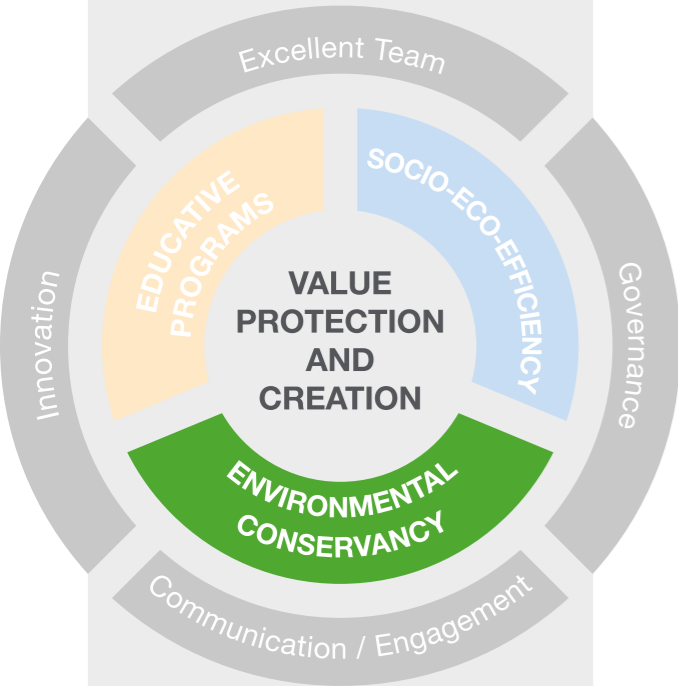
Integrated benefits

The Espaço ECO® Foundation is contributing to biodiversity conservation and water resource protection by supporting farmers, businesses, and communities in recovering degraded areas.

One example is the support to the Water Producer Program in the city of Guaratingueta, Sao Paulo. This program intends to increase water production in the Guaratingueta stream basin, which supplies the city of Guaratingueta, through soil conservation practices and management, recovering riparian zones and protecting the remaining native vegetation that is still left. Also, it financially encourages farmers to join the program by using the concept of payment for environmental services, following the provider-receiver concept. A bill allowing this project's implementation passed in 2010, and the project started being implemented the following year, having as partners for the first three years (2011-2014) the local government of Guaratingueta, the Water, Sewage, and Residues Service Agency of Guaratingueta (SAEG), the Green Corridor Association of Paraíba Valley (ACEVP), BASF, the State Comprehensive Technical Support Coordination (CATI), and the Brazilian National Water Agency (ANA). For the second three-year period (2014-2017), it is partnering with non-governmental institutions, the Espaço ECO® Foundation, and NGO Vale Verde.

NAVIGATION
v
v
v

Presentation



Financial Performance

Credits

New Forest Code Conformity

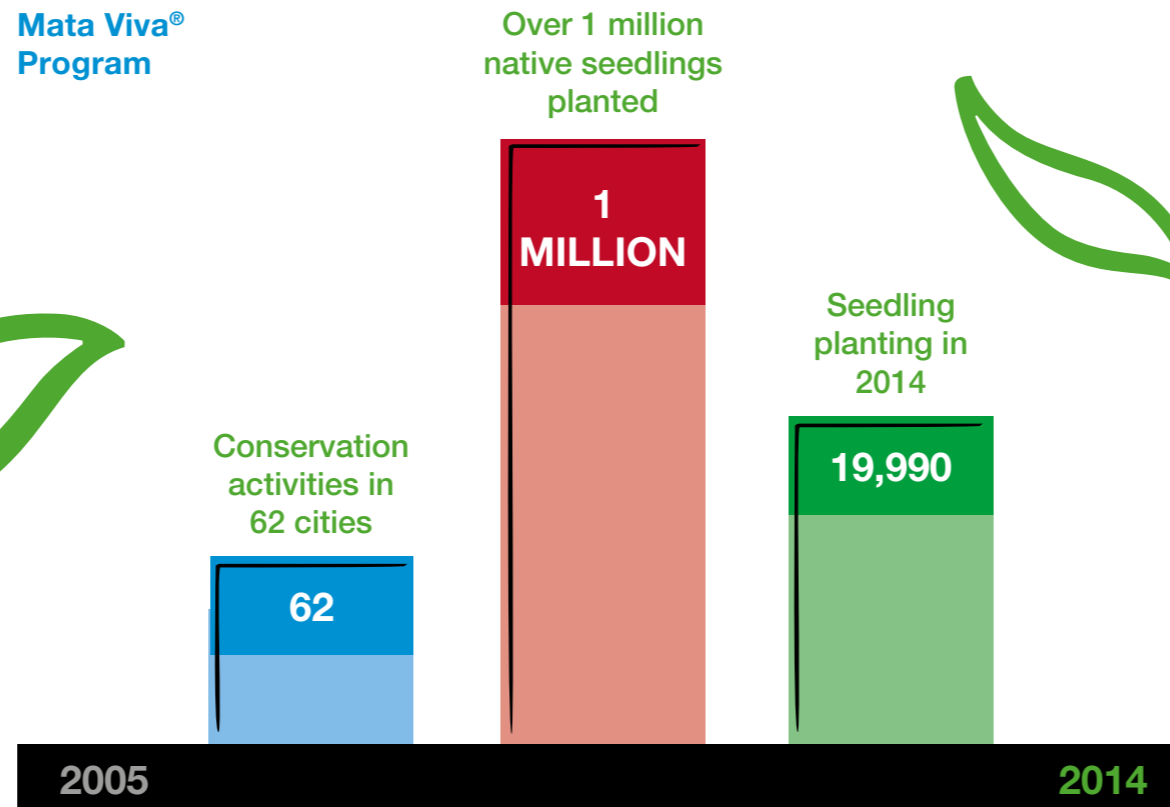
The Rural Environmental Register (CAR in the Portuguese acronym) is an electronic registry set forth in the New Forest Code, passed in 2012, to integrate environmental information about rural properties or possessions, building a database for environmental and economic control, monitoring, and planning, as well as for fighting deforestation. In 2014, the Espaço ECO® Foundation supported CAR compliance at the Santo Antonio de Posse Agricultural Environmental Station and Sitio Alvorada Farm, in Amparo, both in Sao Paulo State, coming up with and developing booklets and holding talks to help out farmers.



Rural Environmental Register (CAR)

2014 Actions of Mata Viva Program® in 10 cities

Mata Viva® Program



The **Espaço ECO® Foundation** is innovating by proposing environmental conservation solutions that integrate social and environmental education with environmental restoration methodologies, as well as humans with the rural or urban environments where they live. The FEE® carries out projects in the Atlantic Forest and Cerrado biomes.

NAVIGATION
V
V
V

Presentation



Financial Performance

Credits



Education Area

Arthur Calasans

Educative Programs

Part of the Espaço Eco® Foundation's mission is to promote sustainable development in the business environment and the society, by sharing knowledge. This is why we had specific actions in 2014 for training communities, partners, suppliers, and employees, contributing to spread sustainability and socio-eco-efficiency concepts.

The activities carried out in the Educational Programs achieved an important milestone this year: 56,608 people impacted, 5.42% more than the previous year. Projects involved 239 teachers, 50,332 public and private school students, plus 488 other people with initiatives such as the Sustainable Management Program, Together for Sustainability, and studies by NEXT – Observatory on Sustainability Trends.

We partnered with the FEE® and BASF and implemented the Mata Viva® Environmental Atlas available for the Palotina city public school system, in the State of Parana. Different segments of the community were mobilized to develop this material, contributing a lot with teachers so they can share with students how rich the city is in so many different aspects. Teachers, students, and the community were all thrilled with the outcome. We also recovered riparian zones in our co-op members' properties, and they were very happy with it.

Jonis Centenaro, Quality & Press Relations at C.Vale – Agroindustrial Cooperative

NAVIGATION



Presentation



Financial Performance

Credits

Environmental Conservation Center



Mata Viva® Education and Environmental Conservancy Program



The Mata Viva® Education and Environmental Conservancy Program intends to promote environmental conservancy and accommodation of sustainability concepts by society, integrating them with economic development and biodiversity.

The project's activities are carried out in partnership with public schools, universities, research centers, agricultural cooperatives, and private businesses. This branch includes initiatives such as the Environmental Education Center (Portuguese acronym NEA), the Environmental Atlas, and the Mata Viva® Theater.

Environmental Education Center (NEA)

It is a space that intends to promote constructive processes of social values, knowledge, skills, and attitudes toward environmental conservation and conscious consumerism, using cross-sectional, comprehensive practices. It is also a communication channel with the community, using social and environmental-focused interpretive and awareness-raising activities and encouraging people to change behaviors, as they become more aware of their role in the society where they live.

With FEE® specifically developed methodologies, the NEA promotes playful, recreational activities, putting into practice what primary and secondary school students learn about science, geography, and biology at public schools in the cities where it operates.

Currently, there are two NEAs partnering with BASF and Agricultural Cooperatives: one with the Cooxupe co-op in Guaxupe, Minas Gerais, and one with Coopercitrus, in Bebedouro, Sao Paulo.

In Guaxupe, the NEA had visits from 4,532 students, 116 teachers, and 71 schools from 19 cities in Sao Paulo and Minas Gerais. In addition to visits, teachers also go through training so they can use supporting material and continue with activities in the classroom.

To celebrate this successful initiative and put out the results obtained in the first year, the FEE®, BASF, and Cooxupe promoted the 1st Viva a Mata Viva® Week. Teachers who participated in the NEA were invited to show what activities have been promoted in their classrooms afterwards, while students took part in activities.

In Bebedouro, the year 2014 was dedicated to activity planning. They took the idea to city offices to ask government officials to make NEA activities part of teachers' 2015 curricular schedule.

NAVIGATION



Presentation



Financial Performance

Credits



The teacher training cycle includes from “The Environment as a cross-sectional topic” in formal education to technical environmental content and preparing students to meeting with nature.



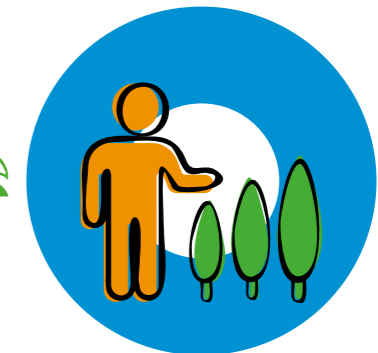
The Environment as a Cross-sectional Topic
How to be an Efficient Environmental Educator?



A brief history of forests
Preparing to Meet the Forest



Brazilian Biomes & Ecosystems



Meeting the Forest (Visiting the Center)
The Forest and our everyday life

What we do at the NEA Cooxupe is to build up the idea of sustainability, offering all the guidance on how and what to do, encouraging co-op members to be interested in preservation. These are small attitudes that make a difference.

Jorge Florêncio, Commercial & Marketing Manager at Cooxupe

NAVIGATION



Presentation



Financial Performance

Credits

Mata Viva® Environmental Atlas

The Mata Viva® Environmental Atlas is a social-environmental education program that builds a progressive study on the city where it is distributed. It allows using social-environmental education cross-sectionally in different formal school classes, offering teachers training and supplying students with customized materials for each city. Every Atlas has updated satellite images of their respective areas, infographics, photos, illustrations, and explanation texts. They introduce local social, cultural, economic, and environmental characteristics, contributing to raise awareness and stimulate student reflection about the reality and the future of the place where they live, contributing to improve their understanding of sustainability.

These Atlas are already offered in seven cities: Bebedouro, Sao Paulo; Campo Mourao, Parana; Castro, Parana; Guaira, Sao Paulo; Guaratingueta, Sao Paulo; Palotina, Parana; and Guarapuava, Parana.

The FEE® and BASF released a German version of the Atlas in Guarapuava, translated by Agroindustrial Agrarian Cooperative member Alto Pettinger. The book was handed out at the co-op's schools to support language education, having in mind how important and impactful sustainability is in their everyday lives.

In Palotina, the Atlas leveraged students' work at the Municipal School Joaquim Monteiro Martins Franco. Guided by teacher Clarice Possatti, they proposed the revitalization of their town's historical landmark. Their plan was suggested to Mayor Jucenir Stenzler, who proposed a bill at the city council, which passed unanimously.

In the city of Bebedouro, a highlight was the "Commitment to the Future: Straight-A Educator" contest. It was an initiative by the town's Education Office in partnership with BASF, Coopercitrus, and the Espaço ECO® Foundation, with the purpose of valuing teachers who build good practices in the classroom using the town's own Environmental Atlas.



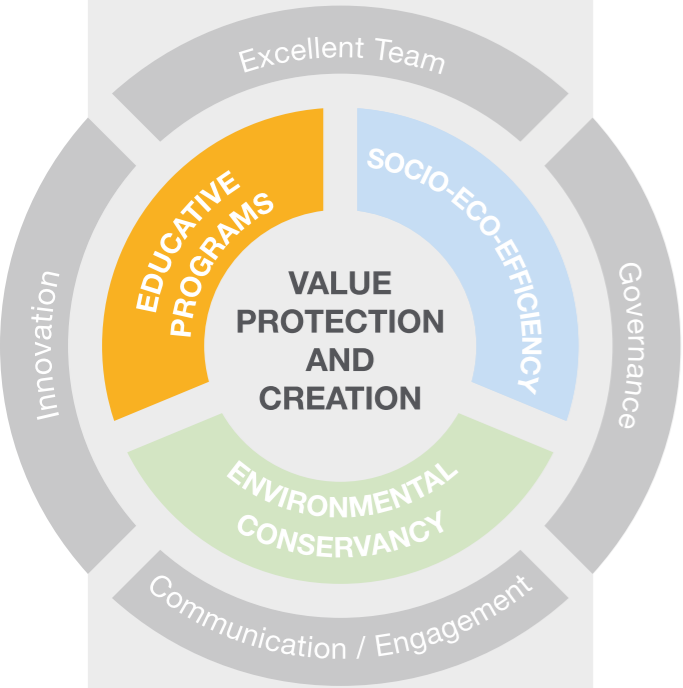
School books are usually far from children's reality, while the Environmental Atlas brings them closer to their own reality, addressing matters of our everyday lives, encouraging students to be responsible citizens.

Érika Arantes Faustino, Commitment to the Future: Straight-A Educator contest winner

NAVIGATION



Presentation



Financial Performance

Credits



Mata Viva® Theater

The Mata Viva® Theater is an itinerant project bringing theater to areas with little or no access to cultural activities. It stimulates environmental awareness and citizenship through performances that playfully approach the topic of sustainability. It is a project for 6-10 year-old public school students and school faculty. In 2014, the Theater brought art and sustainability to 7,508 students and 35 schools in Medianeira, Parana; Sao Luiz Gonzaga, Rio Grande do Sul; and Mandaguari, Parana.



Mata Viva® Theater; on top, the troupe in charge of the show

NAVIGATION



Presentation



Financial Performance

Credits



Gestão Sustentável

Ecoeficiência na Cadeia de Valor

Sustainable Management Program – Eco-Efficiency in the value chain

The Sustainable Management Program offers training for small and medium businesses and producers in agribusiness, industry, and trade in goods and services, so they can engage in a sustainability-oriented management model that can increase their profitability and competitiveness while also reducing impacts.

In 2014, efforts were focused on training and applying sustainability concepts at the agricultural cooperatives Coopercitrus, in Sao Paulo State, and Comigo, Goiás. Management tools were introduced to 54 participants in the two co-ops, including technicians and small and medium farm owners. With theory- and practice-oriented activities, they had access to alternatives that can lead to more sustainable production. Topics such as the Rural Environmental Register (CAR), the New Forest Code, good agricultural practices, and water crisis were also addressed.

Among results participants mentioned, the following stand out: opening a communication channel between co-op and its members; how training promoted important experience sharing; sharing information about productive, social, and environmental-related public policies; and deeply understanding how important it is to implement good agricultural practices to achieve not only environmental, but also financial benefits.



I thought it was an extremely important course. I am sure I will be using what I learned in my work and projects, from analyzing their feasibility to improving their development.

Élio La Laina Júnior, Sustainable Management Program participant

I am very thankful and learned so much, especially with the technical visit to my property and all the attention given to crops and soil correction. The social part was also so important, with group work; I learned a lot about the environment, sustainability, and the economy.

Maria José Garnica, Sustainable Management Program participant

NAVIGATION



Presentation



Financial Performance

Credits

Moving and engaging in sustainability

Connection with Sustainability Workshop

The Experiential Workshop features the game 'Producing with Eco-efficiency' as a pedagogical practice, which asks participants to implement complex concepts, such as sustainability, lifecycle, and eco-efficiency, in a simple, practical manner. This year, the news was that there were three new workshops based on studies by NEXT – Observatory on Sustainability Trends in Health, Small and Medium Businesses, and Human Resources. The workshops had group dynamics and practical activities anchored by this content.

The FEE® is a world reference in sustainability, which made us feel comfortable going through with this project. This work leveled participants' knowledge, opening a new range of potential actions in terms of sustainability.

Rubens Monge, Brazilian Portland Cement Association (ABCP)

In 2014, there were seven workshops at the Brazilian Portland Cement Association, Samarco and BASF, in addition to the Federal University of the ABC area (UFABC), and the Together for Sustainability program. They benefited 165 people in businesses and the academy.

We reached out to the FEE® because we wanted something more pragmatic. It's an ongoing project, but we were already able to open our minds to sustainability as a topic. It's the first time this kind of work is carried out in the mining sector and our expectations are high.

Thales Crivelli, Technology & Eco-efficiency General Manager at Samarco



NAVIGATION



Presentation



Financial Performance

Credits

Moving and engaging in sustainability



To enhance sustainability within supply chains, leading chemical companies have joined forces in the Together for Sustainability (TfS) initiative. The aim of the initiative is to develop and implement a global audit program to assess and improve sustainability practices within the chemical industry. TfS aims to build the industry's standard for sustainable supply chains.

In order to support this supplier engagement program in South America, the Espaço ECO® Foundation has developed supplier training courses (2014-2016) to help TfS members like BASF in establishing sustainable supply chains by raising awareness of environmental protection and social responsibility in the industry.

Cidades Sustentáveis®: The Socio-Eco-Efficiency Game

With corporate education in mind, in 2014, this collaborative game was introduced as an instrument to find new talent at companies, based on one of the trends pointed out by the NEXT RH – 10 study on sustainability trends for HR. This game's challenge is to recover abandoned towns, considering environmental, social, and economic factors through sustainability- and eco-efficiency-focused analysis.

The game is an interesting tool for selection processes, even the more complex ones. All participants were motivated, which enabled assertive evaluation.

Viva Talentos, recruiting company, Espaço ECO® Foundation and BASF partner

NAVIGATION

Presentation



Financial Performance

Credits

Governance



The Espaço ECO® Foundation's Advisory Board, Board of Trustees, and Audit Committee are its main areas and are in charge of deliberating, orienting, and auditing all activities carried out by it. The Board of Directors complements the FEE®'s Corporate Governance and is directly in charge of project and resource management.

All governance members are renowned for their performance in their line of work, actively contributing to leverage new opportunities for the FEE® and encouraging communication with our main stakeholders: academy, governments, businesses, media, and civil society organizations.

The Advisory Board held a meeting in October, 2014, at the Espaço ECO® Foundation headquarters. Committee members presented an outside view to the FEE®, helping the institution meet the most pressing demands of society and businesses. The contributions they brought and generated at the meeting were crucial to the FEE®'s strategic planning.

The year 2014 also marked the new presidency of the Board of Trustees and Board of Directors. As Eduardo de Lima Leduc's term was over, Rui Goerck took the chair. Goerck has 29 years of experience at BASF, is one of the organization's co-founders, and was the FEE®'s first chair of the Board of Trustees. Additionally, Sara Juarez was named VP Director for Education for Sustainability by the Board of Trustees.

NAVIGATION



Presentation



Financial Performance

Credits

Board of Trustees

- Rui Goerck (BASF)
- André Gustavo de Oliveira (BASF)
- Antônio Carlos Manssour Lacerda (BASF)
- Cristiana Xavier de Brito (BASF)
- Eduardo de Lima Leduc (BASF)
- Willi Peter Nass (BASF)
- Ulrich Krammenschneider (GIZ)

Audit Committee

- José Roberto Malavazi
- Daniela Garcia
- Maximiliano Demarchi
- Anita Viviani (alternate member)

Advisory Board

- Flávia Moraes
- João Carlos Martins
- João Salvador Furtado
- Marina Grossi
- Xico Graziano

Board of Directors

President
Roberto Araújo

VP Director
Education for Sustainability
Sara Juarez

Eco-efficiency
Assistant Director
Emiliano Graziano

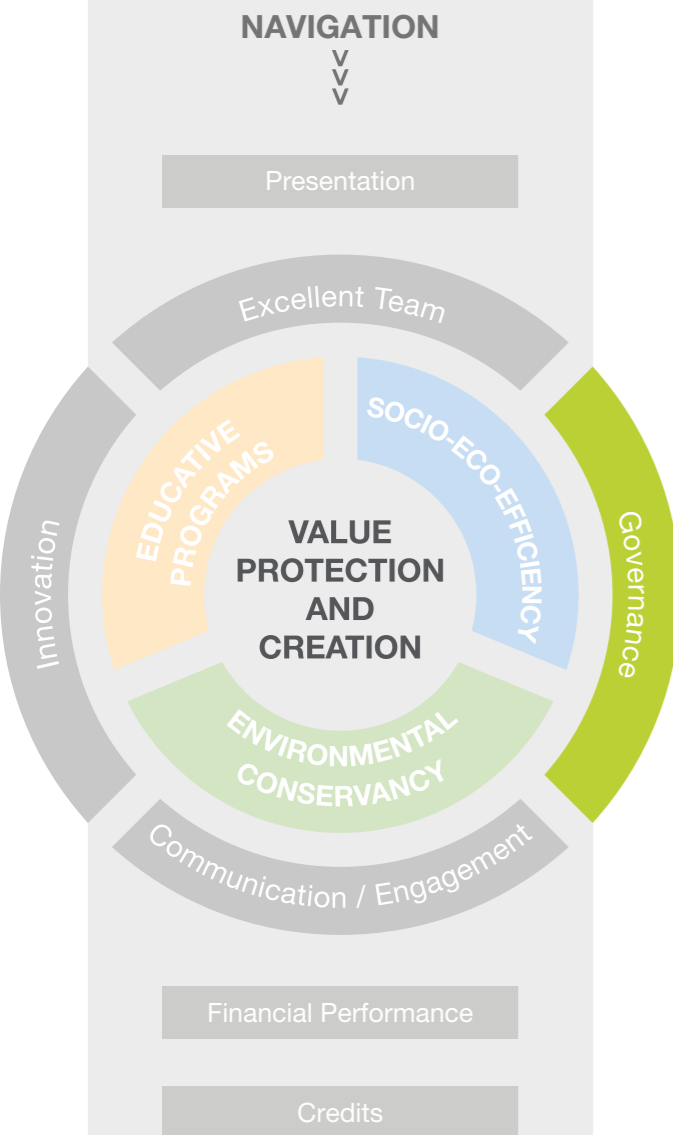
Sustainability
Assistant Director
NN

Assistant Director
of Legal Matters
Carine Galindo

Marketing
Assistant Director
Daniela Ferreroni

Institutional Development
Assistant Director
Olívia Tanahara

Financial Administrative
Director
Cleiton Luna



Transparency & Management

As a Civil Society Organization of Public Interest (OSCIP in the Portuguese acronym), the Espaço ECO® Foundation is fully committed to transparency and ethics across all our procedures and documentations. We are one of the few third-sector organizations that comply with international quality and environmental management criteria defined by the International Organization for Standardization (ISO), and we are also recognized by the World Trade Organization (WTO).

The Espaço ECO® Foundation (FEE®) provides its accounting reports to the Prosecution Office every year, in compliance with Act No. 9,790/1999, regulating OSCIP operations, and it is an ISO 9001:2008¹ certified company since 2009. In 2014, we were qualified as an ISO 14001:2004 + Cor 1:2009² certified company for the first time, which shows how serious our management system is. In the same year, 2013 and 2014 financial statements were audited by an external player, as Price Waterhouse Coopers (PWC) audited our accounting reports for the first time.

Also, the FEE® goes through first- and third-party audits: the former is conducted by BASF and is focused on Quality Management System (ISO 9001:2008) and Environmental Management System (ISO 14001:2004) requirements; the latter is internal and/or external audits conducted by the Deutsche Gesellschaft zur Zertifizierung von Managementsystemen (DQS), the German Management System Certification Association.

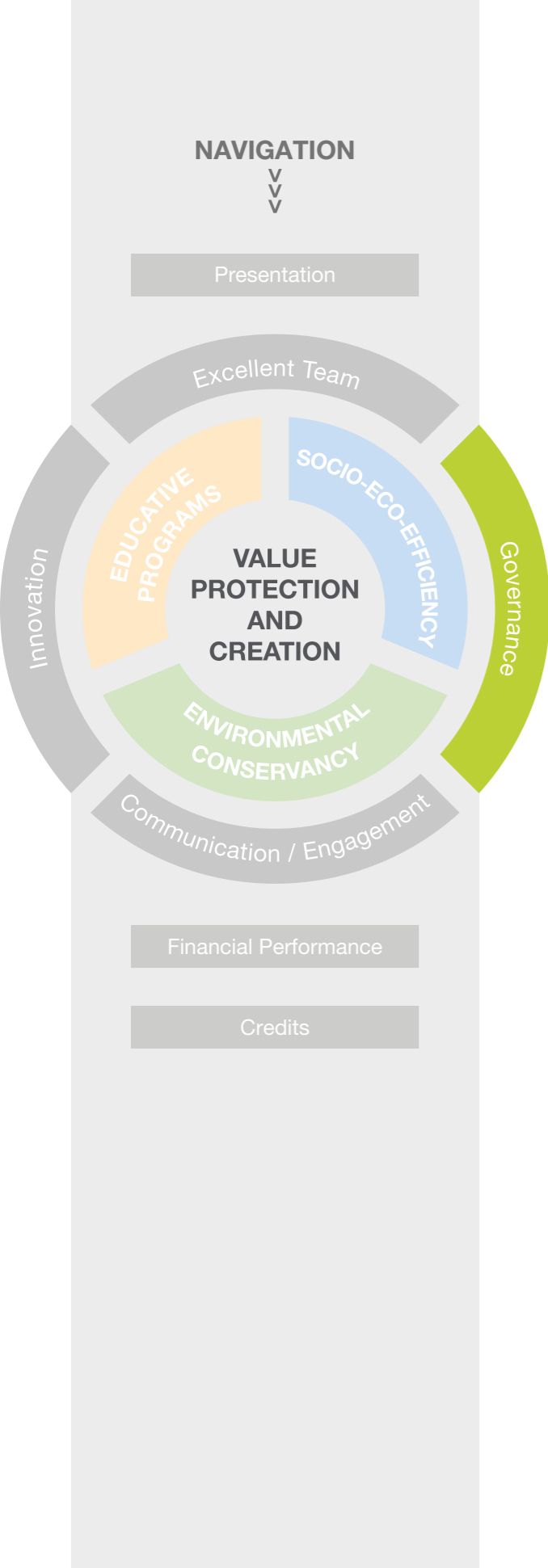
In 2014, the audits demonstrated there were no non-compliances with both certifications, and they pointed out strengths regarding the ISO 14001:2004, such as how employees understand sustainability and how it is effectively applied across organizational processes.

These results, among which we highlight the absence of non-compliance, demonstrate the continuous work to improve Quality Management System processes, supported by engaged internal teams and BASF teams (the company that established the FEE®) during processes and audits. The foundation also has a Definitive Operating License, a Fire Department Inspection Certificate (AVCB), and an Integrated Management Policy Statement, consolidating all our guidelines.



¹ **ISO 9001:2008:** specifies requirements for a quality management system where an organization needs to demonstrate its ability to provide products that meet customer and statutory and regulatory requirements, intending at enhancing customer satisfaction.

² **ISO 14001:2004 + Cor 1 2009:** defines requirements for implementing an Environmental Management System, controlling the environmental impacts of its activities and complying with legal obligations, aiming to prevent pollution.



Actions of public interest

The FEE® quality management and excellence team makes sure it can fulfill its mission as an OSCIP, which is reinvesting resources in projects of public interest, such as public interest studies (those that were not commissioned by any specific client and which results prove to be beneficial once they are disclosed to the public, such as saving natural resources, like water and power).

EDUCATIONAL PROGRAMS

Mata Viva® Environmental Atlas - Guaratingueta
UFABC Agreement - Educational project impact assessment
UMESP
Fundunesp
ANCHAM
ABTD
UNIFESP Talk
Unesp - NEAD
NEXT - Observatory on Sustainability Trends

SOCIO-ECO-EFFICIENCY

Eco-Efficiency Analysis of ethanol generation from agricultural sources
Sustainable Farm Award
AEE_Electric Power Generation
Unesp - iLPP Project
Total Costs of Production - Coffee Maker
Hand Drying Eco-efficiency Analysis
EMBRAPA

ENVIRONMENTAL CONSERVATION

Mata Viva® – Pollinator & Avifauna Biodiversity Project

Total Investment  **R\$ 548,088.26**



Eyes on the present and the future

The year 2014 was crucial to consolidate the FEE® 2025 Strategy. It was planned and developed by the FEE® team, outlining specific objectives and goals to lead the foundation to more and more acknowledgment as a center of excellence in applied sustainability in Latin America,

contributing to promote sustainable development in businesses and society.

To define new goals and put processes into practice in pursue of our goals, every year leaderships and their teams go through an immersion at the Strategic Talk, an event promoting an open conversation among employees, leaders, and guests who build our Action Plan together. In 2014, the theme was 'Together We Are More.'

At this latest "Strategic Talk," partner company DOM Strategy hosted a talk about focusing on client service and consulting culture, promoting reflection on the organization's needs and expectations. The research also suggested ways to work more effectively from 2014 on, being closer to clients, meeting pressing demands, and helping them create value for their businesses and brands.



NAVIGATION



Presentation



Financial Performance

Credits



Communication / Engagement

Over the last few years, the Espaço ECO® Foundation has been dedicating to planning and shaping its FEE® 2025 Strategy, as well as implementing our action plan. 2014 was a year when all this work finally matured. Results were evident and could be seen, watched, and proved through strong communication work, which supported, informed, and engaged employees, stakeholders, and society.

Sharing the knowledge we acquire and technologies we develop is part of the foundation's goals, and to fulfill this mission, we boosted up the number of publications, technical articles, and participation in events, as well as strengthened our public relations activities.

NAVIGATION



Presentation



Financial Performance

Credits

The FEE®'s remarkable presence in newspapers and magazines and on web portals and TV channels has contributed to put a spotlight on sustainability as a science for many different audiences, contributing to spread knowledge in the quest for sustainable development.

There were over 218,816 sq cm (33,916 sq ft) and 2 hours, 24 minutes and 39 seconds of spontaneous media, which would add up to a R\$ 9,576,021.26 investment should we have worked with paid media, 32% more than in 2013. 405 articles were published, 76 of which in print media, including newspapers and magazines, and 315 on online media – web sites, news agencies, and niche portals, plus 8 radio stations, and 6 TV channels. More than just numbers, the FEE® was especially concerned with quality and credibility when it comes to publicity, and evidence of this is found on articles and reports by Globo Rural magazine, Exame magazine's Sustainability Guide, IstoÉ Dinheiro magazine, and Brazilian web portals such as UOL and Envolverde.

Learn more at <http://www.espacoeco.org.br/acontece/fundacao-na-midia.aspx>



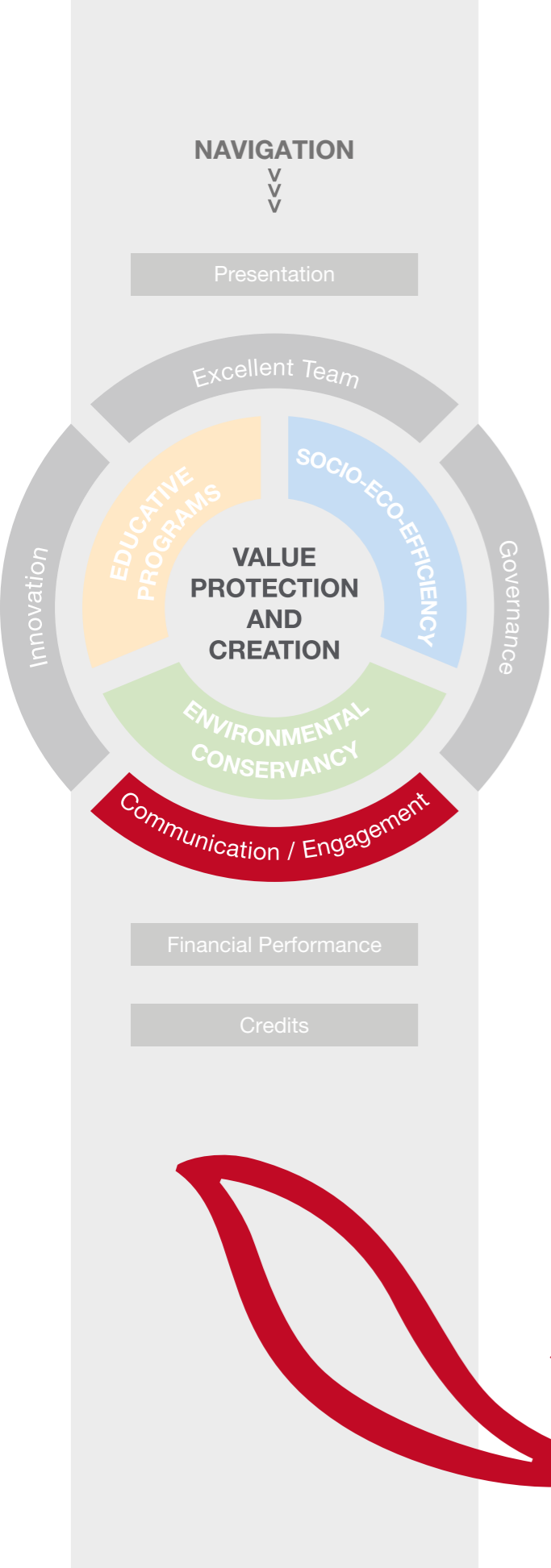
Social media presence

The FEE® was also on social media in 2014, establishing a Facebook Fan Page. The idea is to open a new communication channel with stakeholders and start a relationship with businesses, non-governmental organizations, opinion formers, the academic community and society, generating knowledge about applied sustainability and topics related to the FEE®'s work, as well as our partners' work.

Our page's content includes successful cases, articles, participation in events, and also fun facts based on data and research conducted by the FEE® and/or our partners. This way, we intend to contribute for the discussion about sustainability, proving that it can be measured and assessed, with real data based on scientific experiments, and be easily available for the public. Marketing trends, especially about Life Cycle Assessment, are also addressed.

Like our page at

<https://www.facebook.com/fundacaoespacoeco>



Internal communication & engagement

Stimulating creativity and innovation, strengthening the bond between employees and the FEE®, and contributing to improve the quality of life and wellbeing at work: these are the #EspacoEcoTeam Internal Communication Program goals. The idea is to convey information through three sections: Safe Behavior, Stay Current, and Wellbeing. The FEE®'s new communication tool uses informal language and its own visual identity. It was approved by the team and should continue in following years.

NAVIGATION



Presentation



Financial Performance

Credits

The Positive Deviant – Sustainability Leadership in a Perverse World

The Positive Deviant – Sustainability Leadership in a Perverse World, a book by Scottish author and founder of the Forum For The Future Sara Parkin, was launched in Brazil in April, 2014, published by Peiropolis. The book is the outcome of her expertise of over 40 years of sustainability activism and points to the pressing need to have leaders trained in sustainability, who are aware of the impact of their actions to remedy the unsustainable pattern of economic, corporate, and individual relationships. An initiative by Jatobas Institute, the launch was supported by the Espaço ECO® Foundation and Abril Publishing House.



Glossário de Avaliação de Ciclo de Vida

Gil Anderi da Silva
Sueli Aparecida de Oliveira



Life Cycle Assessment Glossary

It is a partnership between the Espaço ECO® Foundation and the Brazilian Life Cycle Assessment Association, conceived to contribute to consolidating the language used by all scientific community players in Brazil, in order to ensure more effective internal and external communication and information spreading processes. Since methodologies for LCA studies are recent and still developing, this work should be read as a document under construction – and it should be updated and improved over time, counting on the effective, proactive collaboration by the scientific community.

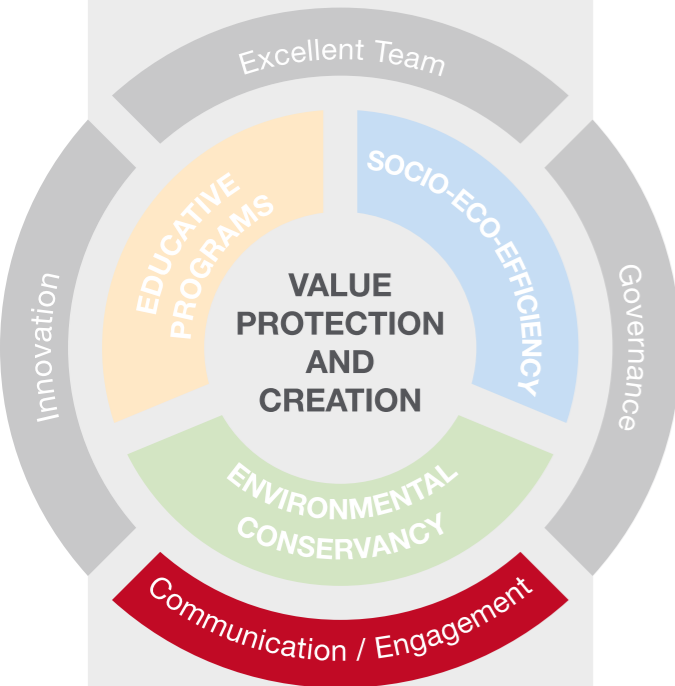
Read the digital version at

<http://www.espacoeco.org.br/conhecimento/artigos-e-palestras.aspx>

NAVIGATION



Presentation



Financial Performance

Credits

Spreading knowledge

There was a lot of participation in events, congresses, and talks throughout 2014, as 5,578 people were directly impacted by sustainability-oriented communication actions targeting different audiences. The following stand out:



NEXT study – 8 Sustainability Trends for HR

Presented at Brazil's National People Management Congress (CONARH) held in August, and at the Brazilian Training & Development Association (ABTD) in November, this talk focused on major sustainability trends for human resources, targeting professionals in this area.

Megatrends: innovation and the economy of sustainability

Held by the Industry Federation of the State of Rio Grande do Sul (FIERGS) in October, the 6th International Innovation Congress was built around the theme "Mega-trends: innovation and the economy of sustainability." The FEE® attended and presented methodologies to assess and measure sustainability based on the Life Cycle Assessment (LCA) concept.

A business approach to agricultural sustainability

Held in September during EMBRAPA's Forum for Research Results: Advancements & Opportunities, it showed the social and environmental results, contributions, and impacts obtained over the last few years by life-cycle studies and inventories on sugar cane, ethanol, and electricity.



Sustainability Culture & Management Systems

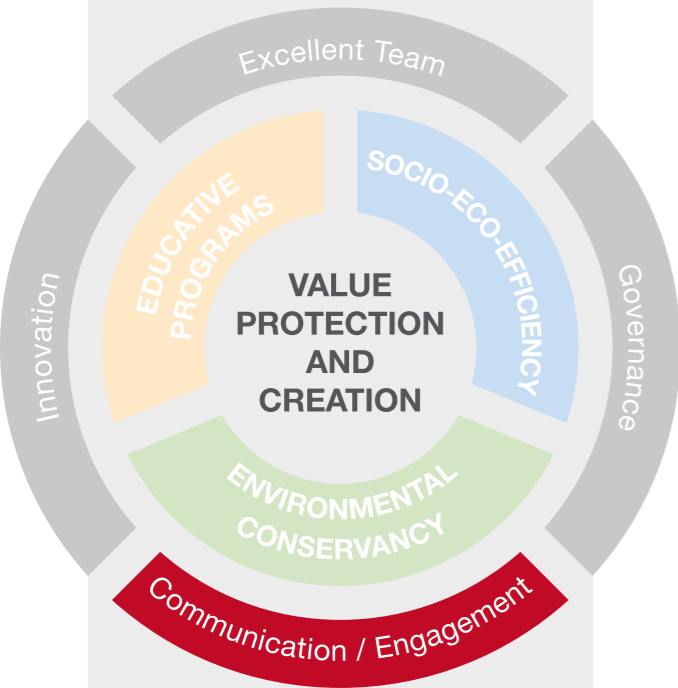
The Espaço ECO® Foundation presented our main sustainability cases at this module of Dom Cabral Foundation's Responsible Management in Sustainability course. The talk was held in October and discussed topics such as Eco-Efficiency and Socio-Eco-Efficiency Analysis and other methodologies that can help companies in their decision-making process, marketing action definition, innovation, and communication with their target audiences.

Check more information about talks and events at www.espacoeco.org.br/acontece.aspx

NAVIGATION



Presentation



Financial Performance

Credits

In terms of articles published, the FEE® generated technical content focused on topics related to our line of work, targeting the mainstream media. The foundation's role as a knowledge spreader for our many stakeholders is noteworthy, fulfilling our mission to engage and influence opinion forming specializing in these topics.

16 total articles were published in outlets such as O Estado de Minas, Pagina 22, Globo Rural Magazine, UOL Noticias, and Monitor Mercantil.



O Globo Newspaper
September 21st, 2014
Topic: Light bulb efficiency



UOL – Op-ed
November 10th, 2014
Topic: Plastic bags



Valor Economico Newspaper
June 5th, 2014
Topic: World Environment Day



Globo Rural Magazine
September 3rd, 2014
Topic: Fertilizers



Globo TV channel / Globo Rural
March 20th, 2014
Topic: Mata Viva® Environmental Conformity & Education Program



Propmark
November 21st, 2014
Topic: Investment in communication

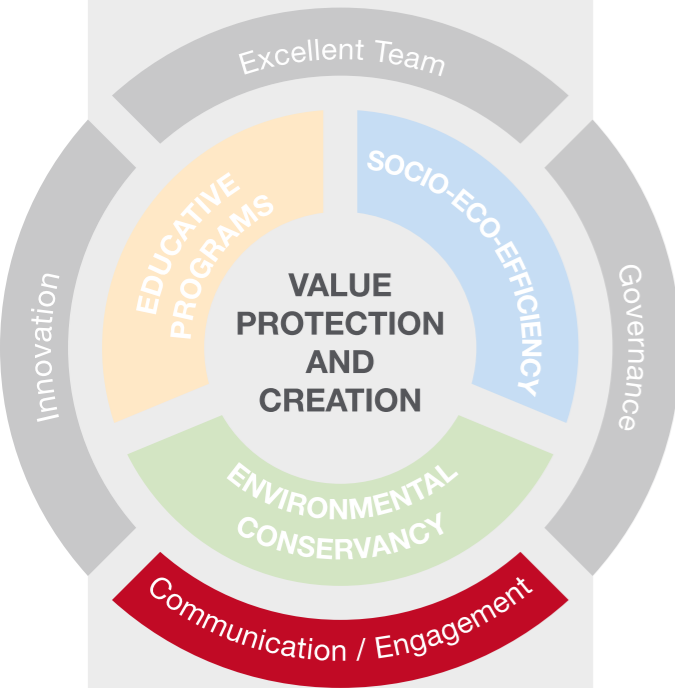
Articles published in 2014 were up 62.5% over 2013.

Learn more: www.espacoeco.org.br/conhecimento/artigos-e-palestras.aspx



NAVIGATION
V
V
V

Presentation



Financial Performance

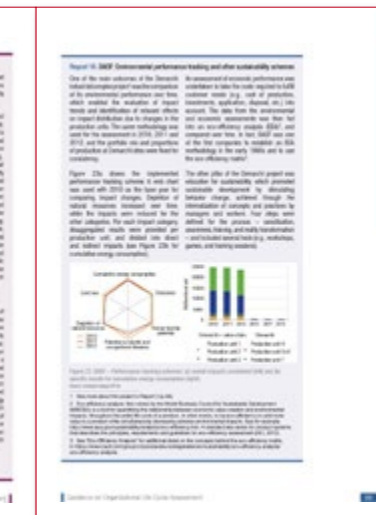
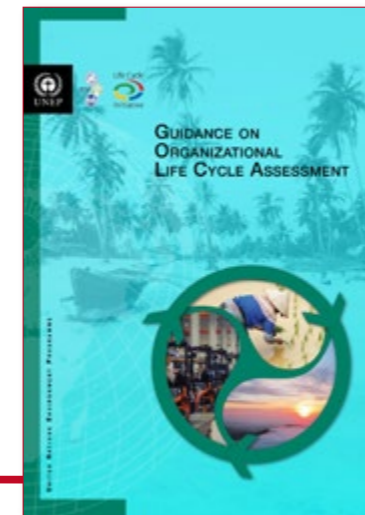
Credits

Communication for Sustainability

With an increasingly integrated and appreciated team, it became clear to see how important communication is. So throughout the year, the Espaço ECO® Foundation developed a shared communication strategic plan along with clients and partners, according to each party's goals. This attitude generated more assertive material and actions to advertise the results of different studies and projects. An example is the initiatives in addressing topics such as the New Forest Code and the importance of sustainability for businesses in folders, banners, booklets, web sites, and giveaways, plus all the public relations support.

Additionally, it is worth highlighting that the Espaço ECO® Foundation was mentioned in Exame Magazine's 2014 Sustainability Guide by two clients: one was inPEV, as a source of research, and one for conducting the Demarchi+ Ecoeficiente Program, a BASF production in partnership with the FEE®. There is a big acknowledgement about the latter too: it was published in the United Nations Environment Programme (UNEP) on Organizational Life Cycle Assessment.

All publications prove the credibility and trailblazing nature of FEE® studies.



In 2014, six articles were published in the annals of the IV Brazilian Life Cycle Management Congress, held in Sao Bernardo do Campo, Sao Paulo.

- 🍃 Fuel social eco-efficiency analysis for steam generation at Braskem's Triunfo plant, Rio Grande do Sul
- 🍃 Eco-efficiency analysis of different farming production systems in the Brazilian Cerrado
- 🍃 Carbon neutralization project for Vila Isabel's 2013 Carnival parade
- 🍃 The Life Cycle Assessment concept is included in the Agronomy program curriculum at Maringa State University (UEM)
- 🍃 Eco-efficiency analysis of beef production systems in the United States
- 🍃 Eco-efficiency of nitrogen fertilizers



NAVIGATION

Presentation



Financial Performance

Credits

Innovation

Being a reference in applied sustainability requires constant efforts in research and development of new solutions, products, and services that can measure and assess the impacts and benefits of sustainability for big, small, and medium businesses (SMB), cooperatives, farms, universities, and society.



Therefore, the FEE® is constantly looking to create new indicators and methodologies that are capable of absorbing the market's state of the art through partnerships with renowned research centers, universities, and specialized professionals. The Espaço ECO® Foundation is concerned with keeping successful initiatives and especially enhancing tools in a continuous improvement process.

Strategic management

The Espaço ECO® Foundation is constantly looking to intensify dialogue with businesses and civil society organizations to bring new applicable services and tools to our studies and projects.

With this in mind, the FEE® joined the Brazilian Business and Ecosystem Services Partnership (PESE) in 2014. Launched by the Center for Sustainability Studies of the Getulio Vargas Foundation (GVces), the Brazilian Business Council for Sustainable Development (CEBDS), and the World Resources Institute (WRI), PESE is an initiative by companies and civil society to demonstrate the business benefits of strategic ecosystem service management in Brazil.

The idea is to promote business strategies combining business performance and sustainable ecosystem and biodiversity management, offering support to Brazilian companies so they can understand and manage their impacts and dependence on these strategic aspects, building a long-lasting experience sharing platform, where the priority is to have participants building together and continuously evolving. In 2014, the FEE® was actively participating in one of the Thematic Chambers (LCA Network) and workshops, having as main goal to absorb experiences and good practices.

NAVIGATION

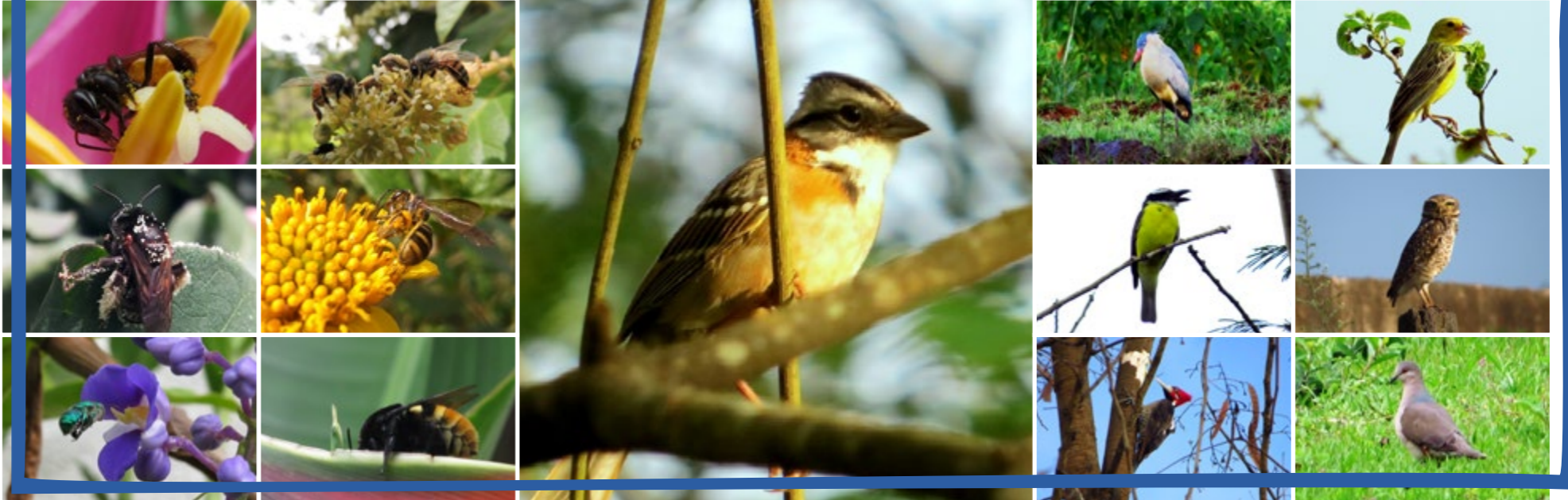


Presentation



Financial Performance

Credits



Pollinator & Avifauna Biodiversity Study archive

Biodiversity protection

Pollinator & Avifauna Biodiversity is an original survey on the area's agents of pollination and avifauna. It aimed to investigate how efficient forest restoration efforts carried out by the Mata Viva® Education and Conservancy Program were in 2010 through 2014 in Araraquara, Bebedouro, and Nuporanga, all in Sao Paulo State – native vegetation coverage in all cities was below 5%, as intensive farming activities have been going on for many years in those areas.

The survey was conducted in 2013-2014 at the Ouro Verde farm in Araraquara, Santa Julia farm in Bebedouro, and Sao Jose farm in Nuporanga. It is now in its final stage and the goal is to stress the importance of recovering native forests, making it clear that intensive farming can live in harmony with local biodiversity, as long as it follows established protocols. Throughout 2014, field campaigns were conducted during all four seasons, to gauge the number of local bee and bird species. "Pollinator & Avifauna Biodiversity" was written in partnership with the Social Insect Study Center of the Biology Department of the Sao Paulo State University (UNESP), and it is one of the first-ever researches on this topic in Brazil.

This work reassures the FEE®'s position as a Center of Excellence in Education and Social Eco-efficiency, and proves how concerned We are with generating qualitative and quantitative information that can lead to reduced environmental impacts and more responsible, eco-efficient use of resources.

Initial results by December, 2014

195+ bird species identified



50+ bee species identified



NAVIGATION



Presentation



Financial Performance

Credits

Integration for sustainability

Also in 2014, the FEE® started to use the principles of Crop-Livestock-Forest Integration (iLPF in the Portuguese acronym) in our projects, an innovative technology to diversify and integrate different crop, livestock, and forest production systems as a consortium through succession or rotation within one area, in order to generate benefits for all activities. This new technology is combined with other studies.

The iLPF system is one of the most important sustainable farming production strategies and intends to bring environmental conformity together with human appreciation, increasing production and economic feasibility. It was first introduced in the “Crop and livestock production system sustainability in the Cerrado area of Ipameri, Goiás, based on Life Cycle Assessment” study, carried out in partnership with the Sao Paulo State University (UNESP), BASF, Santa Brigida Farm (EMBRAPA’s Technological Reference Area in Ipameri, Goiás), the Brazilian Agricultural Research Corporation (EMBRAPA), and John Deere. The study will finish in 2015, and the first results were presented at the World Resources Forum, held in 2014 in Arequipa, Peru, where it was awarded best poster at the event.

The iLPF system’s purpose is to maximize the desirable effects in the environment, aligning productivity gains and conservation of natural resources in the process of enhanced use of areas that have been already deforested in Brazil. It is one of the technologies that comprise the voluntary commitments made by Brazil to reduce projected greenhouse gas emissions for 2020. These commitments were ratified by the Brazilian National Policy on Climate Change (Act No. 12,187/09) and regulated by Decree No. 7390/10. For the purpose of these regulations, the “Sectoral Planning for the Consolidation of an Economy of Low-Carbon Emissions in Agriculture” was also designed.

Supply chain analysis

The agreement signed with EMBRAPA in 2014 encompasses two fronts: one, the goal of which is to share experiences in Life Cycle Assessment (LCA) to build a Brazilian nationwide inventory of the sugarcane supply chain and products, contributing to create accurate technical information that will be available not only to those in charge of setting up public policies, but also to everyone who is interested in developing this industry. The second front’s goal is to check the synergy between AgBalance™ indicators and EMBRAPA indicators, in order to contribute to continuously improve it.



Ernesto de Souza – Globo Rural

NAVIGATION

Presentation



Financial Performance

Credits

Excellent Team

Fulfilling the mission of being a center of excellence in applied sustainability is a task that, first of all, requires keeping a team of specialized, qualified professionals. This is why the Espaço ECO® Foundation has high standards for its selection process. When the FEE® goes to the best students and top universities that are renowned for their lines of research, we encourage new talent to develop and offer them a chance to finish their master's thesis and doctoral dissertations in the job market, with practical studies with results that will ultimately benefit society. This way, we are becoming an appealing institution for good professionals, as we contribute to develop and engage them.

The FEE® encourages continuous learning and cross-sectional team development, and when integrated, they lead to high-performance teams, which are capable of sustainable work in effective processes, producing results that go beyond expectations.

To efficiently conduct all studies, programs, and projects, in addition to talks, workshops, and other activities, the FEE®'s human resources management works strategically very close to the presidency and Board of Trustees. Study and project results are always primarily or secondarily beneficial to citizens and society. And it could not be different inside the foundation.



NAVIGATION



Presentation



Financial Performance

Credits

Training

Refreshing concepts about Life Cycle Assessment

The Life Cycle Assessment (LCA) Training is aimed at all FEE® employees and was carried out throughout 2014. In addition to refreshing the team's knowledge and promoting continuing learning, it intended to stimulate critical thinking and discussions about current topics related to Life Cycle Thinking, contributing to create services that put clients' needs in tune with the most state-of-the-art, comprehensive content found in the academy and the job market.

The training is taught in modules and was created based on the FEE® team's expertise, and had partner collaboration. Specialists were invited to teach classes, such as professors Gil Anderi da Silva, from the Brazilian Life Cycle Association (ABCV), Geraldo Stachetti, from EMBRAPA – a partner since 2013 –, Biagio Gianetti, from Paulista University (UNIP), and others.



Participation in congresses and award ceremonies

Keeping in tune with innovations and major academic research is crucial to develop more assertive work. This is why the Espaço ECO® Foundation employees were encouraged to attend congresses throughout 2014, which resulted in significant increase in participation over previous years. Integration with the FEE® communication team was also crucial to develop more meaningful presentations and talks. The team held 80 talks discussing more than 20 different topics, such as “The importance of sustainability in the business environment,” which not only contribute to expand the discussion about sustainability within corporate, private, and civil society segments, but also increase employee's qualification. They also spearheaded the presentation of technical projects in Brazilian national and international congresses and participated in award ceremonies promoting the Espaço ECO® Foundation's trailblazing, distinctive work, as described below.

Read the whole material at www.espacoeco.org.br/conhecimento/artigos-e-palestras.aspx

7 Congresses



NAVIGATION



Presentation



Financial Performance

Credits

Congress: European Energy Manager, held by the Brazil-Germany Chamber of Commerce & Industry.

Theme: Life cycle-oriented water & energy efficiency.

Approach & goal: to show attendees how unconscious water and energy consumption can impact a company's sustainability, and talk about the challenges facing the Brazilian industry due to lack of natural resources.

Congress: 6th International Innovation Congress, held by the FIERGS System (The Industry Federation of the State of Rio Grande do Sul).

Theme: Information platform: generating knowledge for sustainability.

Approach & goal: to present the works and studies conducted by the Espaço ECO® Foundation and talk about sustainability measuring tools, followed by a debate on the topic.

Congress: 2014 International EcoBalance Congress, Japan.

Theme: sustainability of farming production systems in the Brazilian Cerrado, based on life cycle analysis.

Approach: presentation of eco-efficiency results from a study on integrated crop, forestry, and livestock production system (iLPP), compared with traditional production systems in the Brazilian Cerrado.

Congress: 16th World Fertilizer Congress, held by the International Scientific Center of Fertilizers (CIEC).

Theme: Nitrogen-based fertilizer eco-efficiency.

Approach & goal: to disclose a survey conducted by the FEE® on nitrogen fertilizers and participate in the debate on technological innovation in sustainable agriculture.



NAVIGATION



Presentation



Financial Performance

Credits



IV Brazilian Life Cycle Management Congress (CBGCV)

FEE® Archive

Congress: IV Brazilian Life Cycle Management Congress (CBGCV).

Theme: Life cycle management.

Approach & goal: the Espaço ECO® Foundation attended the congress as a congress scientific committee member in charge of analyzing and approving papers; we also participated in talks and presented six works discussing themes such as the eco-efficiency assessment contribution to help farmers make informed fertilizer choices, and even about better fuel alternatives for steam generation at manufacturing plants. Other initiatives demonstrated how applied sustainability management tools are close to citizens. They include the Life Cycle Assessment (LCA) concept as a new addition to universities' program curriculum, as well as the carbon neutralization project carried out by the FEE® for Unidos da Vila Isabel Samba School and Recreational Society.



Marco Flávio Santos

Congress: Global Conference on Sustainable Beef, supported by the Roundtable for Sustainable Beef (GTPS).

Theme: Sustainable Beef Production.

Approach: following debates on the topic and the buzz around a study conducted in partnership with the American National Cattlemen's Beef Association (NCBA), which measured sustainability developments in this industry in United States and mapped areas of improvement toward more sustainable beef production.



NAVIGATION



Presentation



Financial Performance

Credits

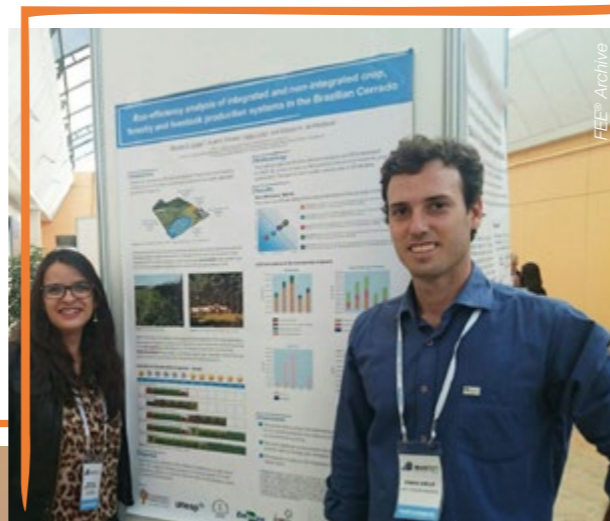
Congress: World Resource Forum (WRF), in Peru.

Theme: Sustainability in farming production systems in the Cerrado region, based on Life Cycle Assessment.

Approach: presentation of eco-efficiency results from a study on integrated crop, livestock, and forest production system (ILPF), compared with traditional production systems in the Brazilian Cerrado.

Award: Best Congress poster granted to employees and authors of the study and article Marcela Porto Costa, Sueli Aparecida de Oliveira, and Fabio Cirillo.

World Resource Forum (WRF), in Peru



Eco-efficiency analysis of integrated and non-integrated crop, forestry and livestock production systems in the Brazilian Cerrado

Marcela P. Costa^{1,2}, Sueli A. Oliveira¹ and Gerson A. de Medeiros²
 1 FEE - Fundação Espaço ECO*, BASF SA, São Bernardo do Campo, SP
 2 PGCA - Programa de Pós-Graduação em Ciências Ambientais - Universidade Estadual Paulista Júlio de Mesquita Filho - Sorocaba, SP
 Corresponding author: Marcela Porto Costa, marcelaportocosta@gmail.com

Introduction

Despite the importance of Brazil as an exporter of agricultural and livestock products, the country has a considerable extension of low yield, degraded pasture land (Figure 1).

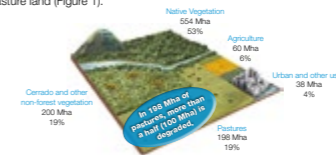


Figure 1: Actual Brazilian landscape - Mha = millions of hectares. Source: Rede Agro.

Technical improvement has been achieved aimed at recovering degraded pastures through systems called crop-livestock integration (CLI) and crop-livestock-forest integration (CLFI), which consist on planting forage concomitant with a grain crop (CLI) and the possibility of planting tree species along spaced lines (CLFI).



Figure 2: CLI System (Harvesting)

Figure 3: CLFI System (Pasture after crop + Forest)

When the crop is harvested, the forage and the residues of the crop generate a fresh pasture (Figure 2), allowing the farmer to use the land for livestock grazing in the dry season as well (Figure 4). The forest component can promote thermal comfort for the cattle, increasing weight gain. Besides, the farmer can obtain an extra income from the harvest of the forest (Figure 3).

Land Use in Cerrado (City of Ipameri - Goias)

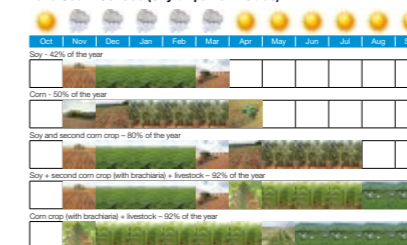


Figure 4: Land use in different systems in Brazilian Cerrado

Objective

Evaluate the eco-efficiency of five different combinations of agricultural (soy, corn, sorghum), forest (eucalyptus for energy supply) and cattle production systems, in order to meet the needs of 500 people in Brazil, in a period of seven years.

Project:



Sponsors:



Methodology

The method used was the Eco-efficiency Analysis tool (EEA) developed by BASF SE, which consists on the economic and environmental life cycle assessment. The basis for each system was an area of 50 hectares.

Results

Eco-efficiency Matrix

The most eco-efficient alternatives are positioned on the top right of the matrix.



LCA Indicators of Environmental Impacts



Conclusion

- The combinations using more expressive amounts of CLFI system followed by CLI system presented the most eco-efficient results in comparison with the conventional systems.
- The most significant environmental advantages of adopting these integrated systems were on energy use, emissions and land use parameters.
- The impacts of costs on the integrated systems are lower due to the higher yields.

REFERÊNCIAS: AGUIAR, H.; KLUTHCOUBSKI, J. Evolução das atividades florestais e pecuárias nos Cerrados. In: KLUTHCOUBSKI, J.; STONE, L.F.; AGUIAR, H. (Ed.). Integração floresta-pecuária. São Paulo: Editora Arca e Fapesp, 2005. p.25-58. ASSOCIAÇÃO BRASILEIRA DE NORMAS TÉCNICAS. Cerrado Ambiental - Avaliação do Ciclo de Vida - Principios e Estrutura. Rio de Janeiro: ABNT, 2009. INFR ECO 14001. ASSOCIAÇÃO BRASILEIRA DE NORMAS TÉCNICAS. Gestão Ambiental - Avaliação do Ciclo de Vida - Requisitos e Orientações. Rio de Janeiro: ABNT, 2009. INFR ECO 14004. BALBINO, Luz Carlos et al. Avaliação tecnológica e ambiental produzidos de sistemas de integração floresta-pecuária no Brasil. Pecuária, Brasília, v. 45, n. 10, Oct. 2010. BASF - Fundação Espaço ECO. Metodologias de Ecoeficiência. Estudo realizado pela TVU Amargosa em setembro de 2001. Figure1: notadigo.org.br. Figure 3: Available on: <http://www.terra.com.br/noticias/mulher-no-campo-maree-costa-sistema-igt-545208y-2559>

Poster displayed at the World Resource Forum, in Peru

NAVIGATION



Presentation



Financial Performance

Credits

Shared experiences

Another highlight of the year 2014 was the exchange program “Information Assignment,” supported by BASF, the company that established the FEE®. The goal was to bring teams closer and especially promote experience and technical knowledge sharing between areas and countries.

At first, Christine Boeddinghaus, from BASF Germany’s applied sustainability area, and Jan Schöneboom, Team Leader of Applied Sustainability – Data & IT at BASF Germany, visited Brazil, while Juliana Silva, Socio-Eco-Efficiency coordinator at the Espaço ECO® Foundation, went to Germany to see firsthand the tools, projects, and actions dedicated to sustainability.

“Information Assignment” discussed topics such as the importance of innovation and communication to disclose studies and results, and how education for sustainability can be crucial to spread the word about eco-efficiency and social eco-efficiency – two unique concepts of the FEE® work.

Ms. Silva got to learn about data collection and analysis optimization methodologies and techniques, as well as the application of the business partnering and consulting concepts. Right now, the institution has employees specializing in market segments to better meet market and client demands and opportunities.

The exchange was crucial to bring teams closer, share expertise, and help BASF and the Espaço ECO® Foundation see new business opportunities.



Definitely the FEE®’s strength is client relationship. I strongly recommend this exchange of experiences. Getting to know the Espaço ECO® Foundation team was essential in this process of supporting studies.

Christine Boeddinghaus, applied sustainability at BASF Germany

Information Assignment was crucial to bridge gaps and promote experience sharing between social eco-efficiency tool developers and specialists living in different parts of the world.

Juliana Silva, Socio-Eco-Efficiency coordinator, Information Assignment first edition participant



NAVIGATION



Presentation



Financial Performance

Credits

Financial Performance

The Espaço ECO® Foundation's financial statements on activities until December 31st, 2013 and 2014 were audited by PricewaterhouseCoopers independent auditors, and their report found they had no reservations.

Part of our surplus will be invested in projects, studies, and research for sustainable development.



Opinion

In our opinion, the aforementioned financial statements appropriately demonstrate the Espaço Eco Foundation's balance sheets on December 31st, 2014 in all relevant aspects, our operational performance, and cash flow for the year that ended on that date, according to Brazilian accounting practices with all the applicable obligations regarding small and medium businesses and the Brazilian provision ITG 2002 – Nonprofit Entities.

São Paulo, May 22th, 2015

PricewaterhouseCoopers
Independent Auditors
Regional Accounting Council CRC No. 2SP000160/O-5

Sérgio Antonio Dias da Silva
Accountant
CRC 1RJ062926/O-9 "S" SP

NAVIGATION



Presentation



Financial Performance

Credits

Balance sheet on December 31st

In Brazilian Reais

CURRENT ASSETS	2014	2013
Cash and Cash Equivalents (Note 5)	119,279.73	1,395,324.68
Equity (Note 6)	6,940,103.38	5,061,097.12
Receivables (Note 7)	158,288.79	664,094.83
Advances (Note 8)	51,831.36	266,191.86
Court deposits	8,485.83	
	7,277,989.09	7,387,208.49

NON-CURRENT	2014	2013
Permanent assets (Note 9)	69,747.12	90,399.74
	69,747.12	90,399.74

TOTAL ASSETS	7,347,736.21	7,477,608.23
---------------------	---------------------	---------------------

CURRENT LIABILITIES	2014	2013
Accounts Payable to suppliers (Note 10)	36,892.83	200,083.72
Miscellaneous Advances (Note 11)	232,104.00	
Agreements (Note 14)	99,774.78	
Tax Liabilities Payable (Note 12)	51,513.57	134,827.15
Payroll Charges Payable (Note 13)	167.76	
Provision for legal claims (Note 15)	220,000.00	
	640,452.94	334,910.87

OWNERS' EQUITY	2014	2013
Owners' Equity (Note 19)	300,000.00	300,000.00
Accrued Surplus	6,842,697.36	6,441,889.30
Year Surplus/ (Deficit)	(435,414.09)	400,808.06
	6,707,283.27	7,142,697.36

TOTAL LIABILITIES AND OWNERS' EQUITY	7,347,736.21	7,477,608.23
---	---------------------	---------------------

NAVIGATION



Presentation



Financial Performance

Credits

Surplus accounts Year ending on December 31st

In Brazilian Reais

	2014	2013
NET EARNINGS (Note 16)	9,818,814.93	10,920,371.94
Provision for legal claims (Note 15)	(220,000.00)	
Third-party Services – Legal Entity (Note 17)	(9,740,282.57)	(10,005,843.59)
Administrative and General Expenses (Note 17)	(818,970.00)	(863,126.75)
Tax Expenses (Note 17)	(104,144.34)	(77,562.00)
Depreciation (Note 17)	(20,652.62)	(20,750.83)

TOTAL OPERATING INCOME AND EXPENSES	(10,904,049.53)	(10,967,283.17)
Financial Incomes (Note 18)	660,503.72	449,694.31
Financial Expenses (Note 18)	(10,683.21)	(1,975.02)

NET FINANCIAL RESULTS	649,820.51	447,719.29
------------------------------	-------------------	-------------------

YEAR SURPLUS (DEFICIT)	(435,414.09)	400,808.06
-------------------------------	---------------------	-------------------



NAVIGATION



Presentation



Financial Performance

Credits

Credits

Coordination

Communication and Marketing at Espaço ECO® Foundation
BASF Institutional Relations Unit for South America

Production

Content Consulting & Copywriting: Lead Comunicação
Editorial Coordinators: Janine Saponara
Copywriters: Janine Saponara / Natália Passafaro
Translator: Aline Scátola
Proofreading: Assertiva Produções Editoriais
Design & Graphic Project: Arco W Comunicação & Design

Contact Information

Espaço ECO® Foundation

Estrada Ribeirao do Soldado, 230 – Botujuru
CEP 09822-010 – Sao Bernardo do Campo (SP)
www.espacoeco.org.br
www.facebook.com/fundacaoespacoeco
espacoeco@basf.com

Lead Comunicação

www.lead.com.br
falecom@lead.com.br
(11) 3168-1412





FUNDAÇÃO ESPAÇO ECO

Sustentabilidade que se mede

www.espacoeco.org.br

 /fundacaoespacoeco

