

GRI and
sustainability
data 2014

GRI and Sustainability data

Metso controls and monitors sustainability issues through various internal and external processes aimed at ensuring the validity and reliability of our sustainability management practices and reporting. Our actions in HSE aim to support our efforts to take environmental efficiency into account.

Table of Contents

Reporting principles	3	Sustainability auditing and assurance	16
Sustainability indices	5	GRI and Global Compact Index	17
Personnel data	6	Assurance report	26
Geographics	7		
Demographics	10		
Environmental	12		
Emissions to air	13		
Materials	13		
Energy	14		
Water	14		
Waste	15		

Reporting principles

Sustainable development is reflected in our daily activities through the overall management of, e.g., our business ethics and Code of Conduct, risk management, human resources, and health, safety and environmental work. Important subjects, such as compliance with laws and regulations, human rights, equal opportunities and non-discrimination, safety, sponsorship and the protection of the environment, are explained in more detail in Metso's Code of Conduct and apply to all Metso employees. Metso's sustainability work is based on our strategy, policies, targets and objectives, as well as on performance indicators set at the Group level and implemented in our operating units globally.

Metso's Sustainability Report 2014 (i.e. the Sustainability section and the GRI and Sustainability data section in the Annual Report) consists of eight sections. The first section describes Metso's highlights in sustainability during 2014. The second section focuses on sustainability targets and the third section concentrates on Metso's sustainability management. The fourth section describes our stakeholders and our stakeholder groups. The fifth section concentrates on the marketplace, describing our sustainable supply chain and product stewardship activities. The key themes of Metso's people are presented in the sixth section of the report including our focus in health and safety achievements and safety figures. Metso's environmental achievements and initiatives, including our energy-efficiency program, the environmental impacts of Metso's own production and our approach to Metso's water strategy, are described in the seventh section. Metso's corporate citizenship frameworks, including sponsorships, donations and community involvement projects, are covered in the eighth section.

The GRI and sustainability data are described in a separate section that includes Metso's reporting principles, Sustainability indices, and Sustainability data, including personal data and environmental figures. Additionally, Sustainability assurance and auditing, and the GRI and Global Compact index are presented in the GRI and sustainability data section of the report.

Metso has been reporting its sustainability principles and goals since 2002. Metso publishes its sustainability data annually and the reporting period is the calendar year, which is also the financial year, i.e. January 1 to December 31. Metso's sustainability data for 2014 can be found in the GRI and sustainability data section of our Annual Report 2014. The information disclosed in the Sustainability section is focused on material and dynamic information written in a compact format, whereas more comprehensive or static sustainability information is disclosed on our web sites (Sustainability in Metso). The other sections of the Annual Report serve as supplementary sustainability information.

Metso's sustainability reporting in 2014 is based on the core indicators of the Global Reporting Initiative's (GRI) G3.1 Guidelines. The Global Reporting Initiative is a network-based organization that has pioneered the development of the world's most widely used sustainability reporting framework, which is under continuous improvement and is applied worldwide. We have selected the indicators from the G3.1 Guidelines that are most relevant to Metso in terms of our operations, products

and stakeholders. We have self-declared our reporting to be Application Level B+ of the GRI G3.1 Guidelines. PricewaterhouseCoopers Oy has also checked our reporting against GRI guidelines and has confirmed it to be Application Level B+ of the GRI G3.1 Guidelines.

The essential focus areas of sustainability for 2014 are illustrated in the materiality matrix in the Sustainability section of our Annual Report 2014. These focus areas have been carefully analyzed and selected by management representatives in collaboration with our Sustainability team. The material themes have been identified also based on our encounters with different stakeholder groups.

Metso develops its Group-wide reporting and the scope of its sustainability monitoring actively and in cooperation with its stakeholders. For instance, sustainability indices and raters are driving the performance of company reporting by developing the indices and the complexity of the questions for global companies. Also non-governmental organizations (NGOs), along with society in general, are demanding more transparency from business actors globally. In addition, Metso's internal stakeholders' dialogue is increasing on a global scale. Through active cooperation with all of Metso's stakeholders, we strive to create a more transparent and interactive platform for further cooperation and reporting structures.

The consolidated quantitative sustainability performance data in the Annual Report has been externally assured by PricewaterhouseCoopers Oy, which has also checked our reporting against GRI guidelines and has confirmed it to be Application Level B+ of the GRI G3.1 Guidelines. A comparison of the Annual Report's sustainability content against the G3.1 Guidelines and the UN Global Compact initiative is presented in the section of the Sustainability Report containing the GRI and Global Compact Index.

Scope of our reporting

The scope of our reporting is the Metso Group, unless otherwise stated. Our scope of reporting excludes associated companies, joint ventures or companies that are our suppliers. The sustainability data is commonly presented at the Group or business area level. Any other division of the data reported is noted separately.

Metso's previous Annual Report with sustainability data was published in March 2013. Additional sustainability information can be found on our website, Sustainability at Metso. We present the comparable figures for 2013 in parentheses. Wherever the data for 2013 has been restated, it is indicated with a separate note.

Financial reporting

In our financial reporting, we follow the International Financial Reporting Standards (IFRS). Our financial reporting system data covers all Metso units. Each unit submits its financial report to the Group-wide reporting application, and the data is consolidated, validated and analyzed at both the reporting segment and corporate levels. The majority of the figures describing economic responsibility are derived from the audited financial statements. The "purchases by country" data has been collected separately from reporting units and the "by country division" is defined as the location of the supplier's domicile.

Sponsorship and donation expenditure data are collected annually from the relevant Metso units.

Health, safety and environmental reporting

The environmental data is collected from all our production facilities, as the majority of Metso's environmental impacts are related to production activities. Altogether 37 (36) units are included in environmental reporting. Environmental figures for 2014 include also additional two locations where operations were discontinued during the reporting year. The energy and water-related data is reported quarterly and all other environmental data annually.

Data collection is carried out using our Group-wide reporting system, Sustanalyzer, and the reported data is approved by the unit manager. At the Group level, the data is consolidated, validated and analyzed. The data is used, e.g., as an environmental risk management tool and for planning operational improvements. Environmental figures reported by Metso are based on best available information that has gone through validity check. Some figures are based on calculated numbers or estimates, and may thus be changed in line with improved availability of better quality data in future reports. In line with continuous improvement of our environmental reporting, some necessary corrections to our historical data have been made in this report.

Our CO₂ emissions are calculated according to the principles of the GHG protocol.

Metso's health and safety (HS) data is collected from all worldwide locations and covers all Metso operations. New acquired operations are integrated into Metso's reporting within a year of

the date acquired. Data is collected by common tools monthly and reviewed by the HSE regional organization as well as by the business lines and Metso top management. Metso used a worldwide health and safety data reporting system, HSE Monitor, for collecting HSE data in 2014. The Lost-time incident frequency has been calculated based on incidents resulting in one or more days of absence and the estimated hours worked. The factor is calculated per million hours worked.

Data related to our research and development activities is collected from our business areas annually. Our business areas are responsible for the accuracy of the figures, after which the data is consolidated at Metso level.

Reporting personnel data

Metso HR management is responsible for collecting and reporting personnel data with the support of local HR. Since 2010, Metso has used a global HR information system (SAP HR) that allows access to versatile and comparable HR data globally. This data is the main source of the personnel data in annual reporting, and it is managed in conjunction with Metso's financial reporting. Together the global HR system and harmonized global HR reporting principles have created an excellent basis to the quality of the data in our people reporting. The headcount information and the more detailed personnel analysis in our Annual Report 2014 cover all of Metso.

Sustainability indices

Sustainability supports us in creating long-term shareholder value and enables us to embrace opportunities and manage risks deriving from economic, environmental and social trends and challenges. We believe that adapting to global challenges through innovation, quality and productivity enhances our ability to generate long-term shareholder value. Our target is to constantly improve our ratings in the significant sustainability indices.

Global sustainability indices track the performance of companies and rate how companies face and manage sustainability trends, such as resource scarcity, climate change or an aging population within a company's competitive environment. Global frameworks also provide companies the possibility to develop through transparent and enduring indicators.

In 2014, Metso was included in the Climate Disclosure Leadership Index with the transparency score of 98/100. The Climate Disclosure Leadership Index ranks companies listed on the Nordic stock exchanges whose reporting takes a professional approach to disclosing actions and achievements to help mitigate climate change. The ranking was announced in the CDP Nordic 2014 report. Metso's success reflects the importance its management places on maintaining a high level of transparency in its reporting.

Additionally in 2014, Metso was included in the FTSE4GOOD index, Ethibel Sustainability Index, oekom Research AG index with Prime status, Storebrand Trippel Smart, OMX GES Ethical Finland Index, OMX GES Sustainability Finland Index, Kempen SNS SRI Universe Index, ECPI Ethical EMU Equity Index and in the Vigeo Rating.

Personnel data

Metso as an employer, 2014



We have a strong global presence. Our network of services and products are closely knit – offering better solutions for our customers around the world.

Number of countries
51

(2013: 50)

Number of locations
270

(2013: 270)



We are focused on performing and delivering our customer promise “Expect results”.

Number of employees
15,644

(2013: 16,425)

New employees
2,209

(2013: 1,716)



Our employees from wide range of countries and cultures are driving customer success.

Average age
41.1

(2013: 41.1)

Number of nationalities
83

(2013: 81)



We are competent and committed industry professionals, and this creates a unique environment with the spirit of making things happen.

Average length of service
9.1

(2013: 9.2)

Total turnover rate*
15.3%

(2013: 12.3%)



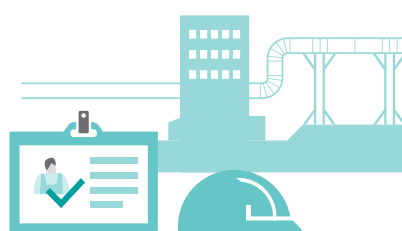
At Metso, we support our employees to reach their highest potential. Our international working environment enables us to learn together. That makes an excellent basis for growing and developing, and taking charge of own career.

Performance Review participation
64%

(2013: 65%)

Development Discussion participation
66%

(2013: 64%)



At Metso, everyone has a true interest in being forerunners in safety and sustainability.

LTIF (lost-time incident frequency)
3.9

(2013: 4.2)

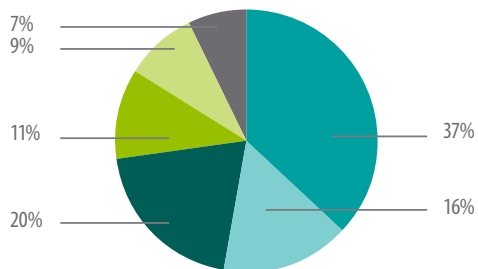
Work related fatalities
0

(2013: 1)

* Total turnover rate is calculated from average number of active employees in reporting period.

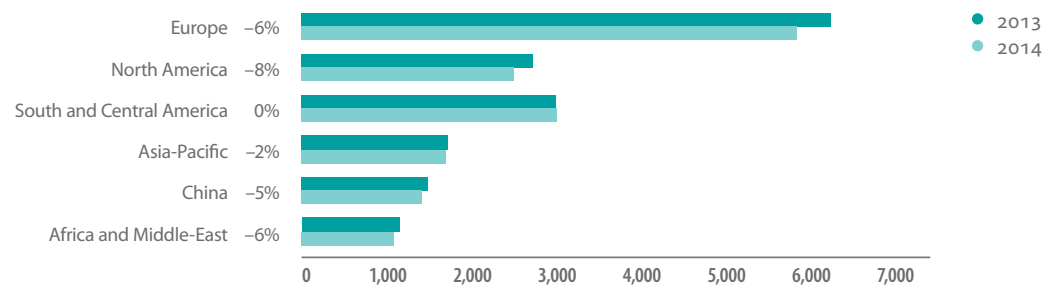
Geographics

PERSONNEL BY AREA
PERSONNEL 15,644 (2013: 16,425)



- Europe 37% (38%)
- North America 16% (17%)
- South and Central America 20% (18%)
- Asia-Pacific 11% (11%)
- China 9% (9%)
- Africa and Middle East 7% (7%)

CHANGES IN PERSONNEL BY AREA



Number of employees, total	2014			
	2013	Male	Female	Total
Metso total	16,425	12,874	2,770	15,644

Number of employees, Europe	2013	2014	
	Total	Male	Female
Austria	82	62	20
Belarus	0	2	0
Belgium	49	4	1
Bulgaria	5	5	0
Croatia	2	0	0
Czech Republic	264	215	34
Denmark	98	69	21
Estonia	0	4	0
Finland	2,769	2,136	563
France	619	471	121
Germany	583	368	82
Hungary	3	0	0
Italy	50	25	7
Macedonia	8	7	0
Netherlands	33	28	5
Norway	52	39	9
Poland	83	48	15
Portugal	30	25	7
Republic of Serbia	4	3	0
Romania	5	5	0
Russia	339	223	86
Slovakia	0	3	0
Spain	121	111	23
Sweden	852	654	144
Turkey	46	49	8
Ukraine	40	26	14
United Kingdom	135	104	27
Uzbekistan	5	3	1
Europe total	6,277	4,689	1,188

Number of employees, Africa and Middle East	2013	2014	
	Total	Male	Female
Algeria	8	6	2
Ghana	55	44	8
Kazakhstan	30	15	13
South Africa	1,025	823	144
United Arab Emirates	25	23	5
Zambia	8	5	2
Zimbabwe	6	2	0
Africa and Middle East countries total	1,157	918	174

Number of employees, North America	2013	2014	
	Total	Male	Female
Canada	614	407	80
USA	2,126	1,624	406
North America total	2,740	2,031	486

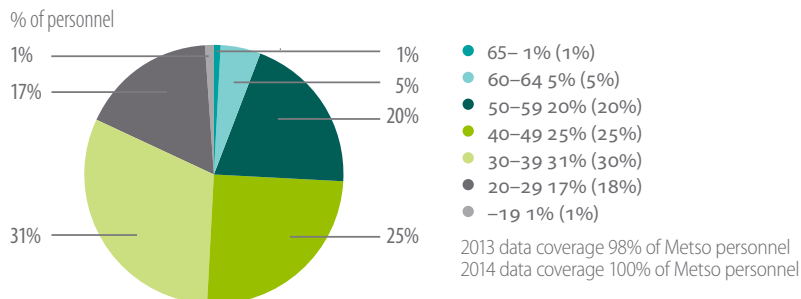
Number of employees, South and Central America	2013	2014	
	Total	Male	Female
Argentina	3	3	0
Brazil	1,880	1,452	228
Chile	613	708	83
Mexico	287	261	38
Peru	237	220	34
South and Central America total	3,020	2,644	383

Number of employees, Asia-Pacific countries	2013	2014	
	Total	Male	Female
Australia	548	479	95
China	1,493	1,088	336
India	929	832	39
Indonesia	41	36	7
Japan	35	29	7
New Zealand	5	2	0
Singapore	66	31	24
South Korea	81	72	15
Taiwan	0	2	5
Thailand	30	18	11
Vietnam	3	3	0
Asia-Pacific total	3,231	2,592	539

Personnel 20 largest countries in 2014	2013	2014
Finland	2,769	2,699
USA	2,126	2,030
Brazil	1,880	1,680
China	1,493	1,424
South Africa	1,025	967
India	929	871
Sweden	852	798
Chile	613	791
France	619	592
Australia	548	574
Canada	614	487
Germany	583	450
Russia	339	309
Mexico	287	299
Peru	237	254
Czech Republic	264	249
Spain	121	134
United Kingdom	135	131
Denmark	98	90
South Korea	81	87

Demographics

AGE STRUCTURE



Gender distribution of personnel	2013		2014	
	Male	Female	Male	Female
Metso Board of Directors	71%	29%	71%	29%
Metso Executive Team	83%	17%	86%	14%
Metso Employees*	82%	18%	82%	18%
Blue Collars*	96%	4%	95%	5%
White Collars*	75%	25%	75%	25%
Line managers*	87%	13%	86%	14%
Permanent Full-Time employees*	84%	16%	83%	17%
Permanent Part-Time employees*	39%	61%	33%	67%
Temporary employees*	77%	23%	81%	19%
Trainees*	71%	29%	64%	36%

* 2013 data coverage 98% of Metso personnel, 2014 data coverage 100% of Metso personnel

Personnel structure by employment type	2013*		2014	
	total	% of total	total	% of total
Regular, Full-Time	13,946	86.9%	13,447	85.9%
Regular, Part-Time	260	1.6%	210	1.3%
Regular total	14,206	88.5%	13,657	87.2%
Temporary total	1,838	11.5%	2,002	12.8%
All total	16,044*	100%	15,659	100%

Number of trainees in headcount	235	1.5%	184	1.2%
---------------------------------	-----	------	------------	-------------

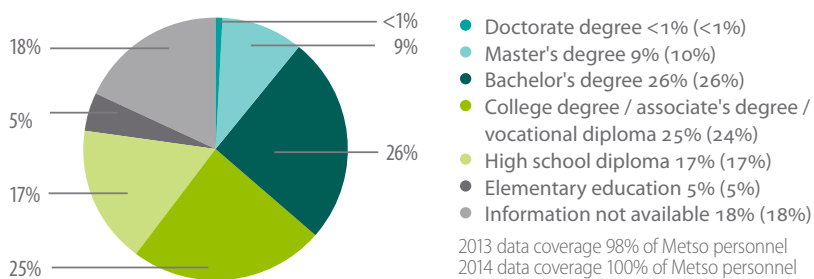
* 2013 data coverage 98% of Metso personnel, 2014 data coverage 100% of Metso personnel

Personnel by function	2013		2014	
	total	% of total	total	% of total
Engineering	1,587	9.7%	1,429	9.1%
Manufacturing	6,552	39.9%	6,082	38.9%
Service	2,858	17.4%	3,101	19.8%
Active personnel total, COGS	10,997	67.0%	10,612	67.8%
Sales and marketing	3,098	18.9%	2,888	18.5%
R&D	347	2.1%	336	2.1%
Administration	1,983	12.1%	1,808	11.6%
Active personnel total, S, G & A	5,428	33.0%	5,032	32.2%
Active personnel by function, total	16,425	100%	15,644	100%

COGS = Cost of Goods Sold, S, G & A = Sales, General & Administration

PERSONNEL BY EDUCATION LEVEL

% of personnel



Environmental figures

Materials	2010	2011	2012	2013*	2014
Ferrous metals, 1,000 t	232.86	258.98	139.45	123.84	178.52
Non-ferrous metals, 1,000 t	4.26	7.35	4.16	5.26	4.03
Paints, 1,000 t	0.98	1.06	0.78	0.59	0.53
Solvents, 1,000 t	0.43	0.60	0.43	0.41	0.60
Cardboard, 1,000 t	0.63	0.70	0.06	0.14	0.16
Wood, 1,000 t	5.67	8.50	5.52	6.75	8.01
Paper, 1,000 t	0.03	0.04	0.01	0.04	0.04
Plastics, 1,000 t	0.25	0.27	0.03	0.08	0.06
Recycled materials, 1,000 t**	101.99	94.45	56.18	51.22	38.44

Energy	2010	2011	2012	2013	2014
Electricity, TJ	1,776.43	1,820.88	760.29	703.65	858.69
District heat, TJ	760.51	568.28	141.02	127.95	118.68
Steam, TJ	115.00	100.82	36.69	39.40	47.43
Natural Gas, TJ	915.12	871.74	653.85	622.53	620.05
Coal, TJ	198.83	120.33	0.00	0.00	11.24
Heavy fuel oil (HFO), TJ	15.39	13.60	4.85	5.82	4.05
Light fuel oil (LFO), TJ	64.47	50.51	0.00	0.00	0.00
Diesel, TJ	38.97	47.19	23.93	20.76	18.42
Gasoline, TJ	5.99	2.93	0.71	0.16	0.00
Liquified petroleum gas (LPG), TJ	65.75	73.99	32.13	27.59	31.30
Total energy, TJ	3,956.46	3,760.26	1,653.28	1,547.85	1,709.85

Water	2010	2011	2012	2013	2014
Water consumption ***, 1,000 m3	2,061.61	1,589.20	590.46	580.57	652.93

Air emissions	2010	2011	2012	2013	2014
CO ₂ , 1,000 t	282.61	266.51	127.16	120.55	148.55
VOC, 1,000 t	0.40	0.42	0.35	0.27	0.31

Waste	2010	2011	2012	2013	2014
Hazardous, 1,000 t	6.79	7.72	5.39	5.03	4.41
Non-hazardous, 1,000 t	95.60	108.94	56.06	53.18	67.44

* Figures for 2013 have been corrected where necessary due to improved accuracy of available data

** Recycled materials include all material types originating from recycled sources

*** Excluding surface water and water from recycled sources

Please note that the figures from 2012 onwards describe Metso's current structure.

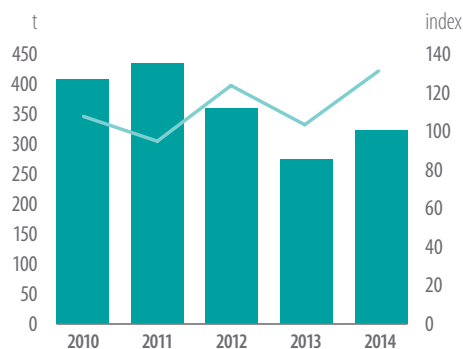
Emissions to air

In 2014 our production activities caused 148.55 (120.55) thousand tons of carbon dioxide emissions related to the direct and indirect use of energy. The majority (about 73%) of our CO₂ emissions are created indirectly through purchased electricity, steam and district heat produced elsewhere. Our CO₂ emissions were increased in 2014 compared to the previous year, mainly due to the acquisition of a number of foundries.

VOC emissions resulting from our production are insignificant and related mainly to the use of solvent-based chemicals. In 2014, our VOC emissions were 315 (267) tons.

Please note that figures 2012 onwards describe Metso's current structure.

VOC EMISSIONS



- VOC
- Index*

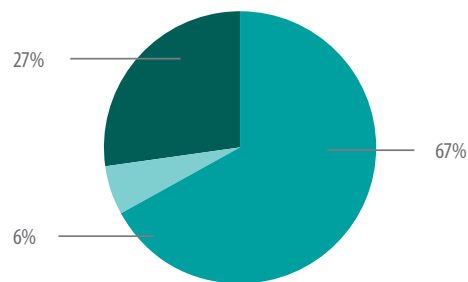
*The index is proportioned to Metso's net sales.
For comparison, the reference year is 2009 = 100 index value

Materials

The raw materials used in our production consist mainly (over 90%) of recyclable ferrous metals. In 2014, we used around 178,525 (123,837) tons of ferrous metals. Other materials include chemicals and various packaging materials (cardboard, wood, paper and plastics). Total new/virgin materials use in 2014 amounted to around 191,940 (137,107) tons, an increase of 40% compared to the previous year. The amounts of materials should be regarded as estimates, as the reporting of materials is not comprehensive for all Metso production units.

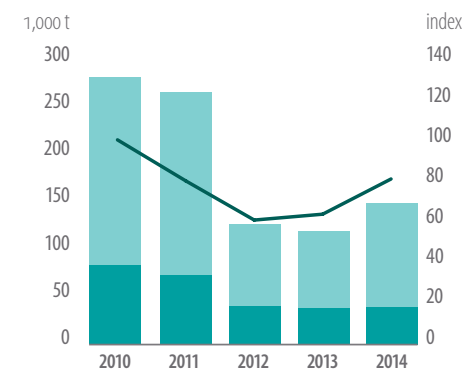
Please note that figures 2012 onwards describe Metso's current structure.

METSO'S OPERATIVE CARBON FOOTPRINT



- Electricity 67% (60%)
- District heating + steam 6% (8%)
- Fuels 27% (32%)

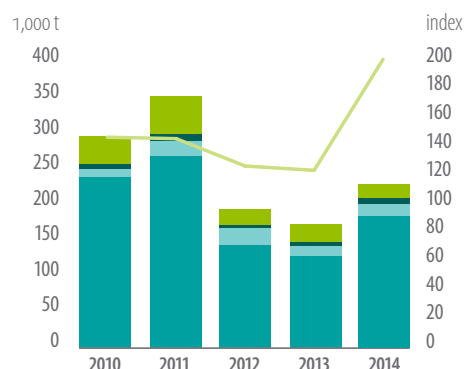
CO₂ EMISSIONS



- Direct emissions
- Indirect emissions
- Index*

* The index is proportioned to Metso's net sales.
For comparison, the reference year is 2009 = 100 index value

MATERIALS USE



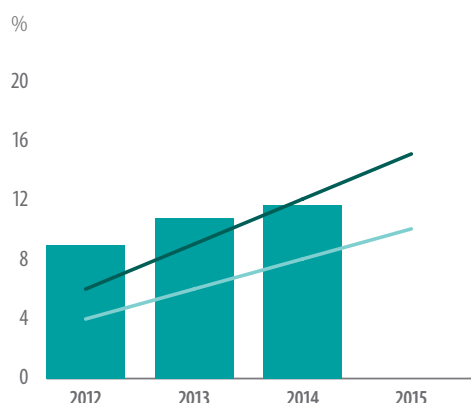
- Metals
- Chemicals
- Packaging materials
- Other materials
- Index*

*The index is proportioned to Metso's net sales.
For comparison, the reference year is 2009 = 100 index value

Energy

Some of Metso's production processes, e.g. iron and steel foundries, are energy intensive. The majority of our energy consumption comes from indirect energy sources (electricity, district heat and steam), whereas natural gas is the major component of our direct energy consumption.

SUMMARY OF ENERGY SAVING ACTIONS



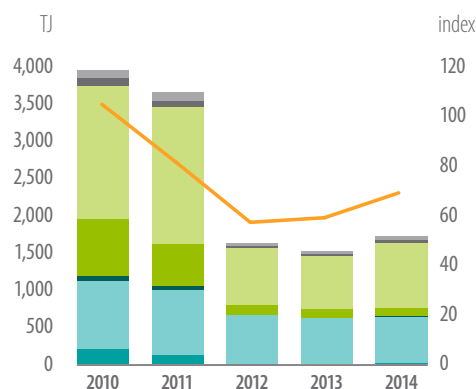
- Energy savings, %
- Target level -20% for 2020
- Target level -15% for 2015

In 2014, our energy consumption was 1,709.85 (1,547.85) TJ.

The figure does not include the fuels used in transportation and vehicles, nor does it include employee travel and transportation. In the energy consumption graph, oil includes heavy fuel oil and light fuel oil; other energy includes gasoline, diesel and liquefied petroleum gas. The total energy consumption at Metso increased around 10% compared to 2013.

Please note that figures 2012 onwards describe Metso's current structure.

ENERGY CONSUMPTION



- Coal
- Natural gas
- Oil
- District heat
- Electricity
- Steam
- Other
- Energy consumption index

* The index is proportioned to Metso's net sales. For comparison, the reference year is 2009 = 100 index value

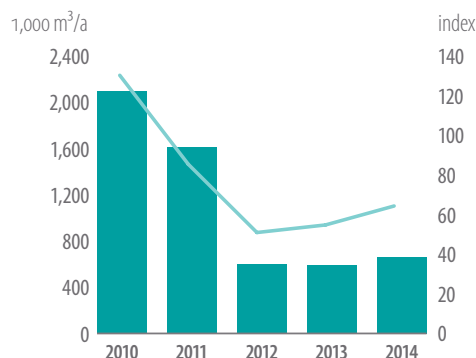
Water

The water usage in our operations is not significant and water is used mostly for catering and sanitation purposes. Our water consumption in 2014 was 652,926 (580,565) m³, consisting mainly of municipal water usage and excluding the usage of surface water as well as water from recycled sources. We use surface water for cooling purposes mainly in our foundries where clean water is returned back to its source without causing any material environmental impacts. Therefore, surface water usage is not included in the reported water amount.

We have set a target to reduce our water usage by 15% by 2020. We continue to focus on this target set in 2012, and we encourage our production units to take targeted actions to decrease their usage of water. In 2014, we did not manage to reduce water consumption compared to the previous year. We increased the water reporting frequency in 2013 by including the water-related indicators in the quarterly reporting.

Please note that figures 2012 onwards describe Metso's current structure.

WATER CONSUMPTION / NET SALES



- Total water consumption, m³/a
- Index, water/net sales*

*The index is proportioned to Metso's net sales. For comparison, the reference year is 2009 = 100 index value

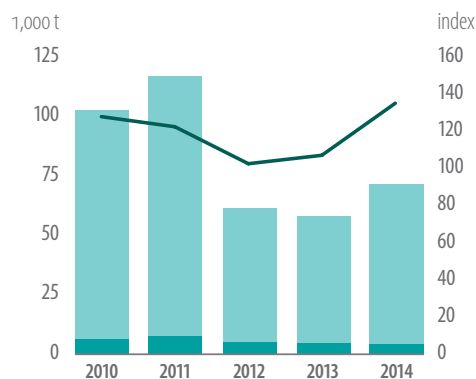
Waste

In 2014, our operations generated a total of 71,848 (58,209) tons of waste, of which 30% (42%) was recycled. The waste resulting from our operations consists mainly of metal, wood, cardboard, paper, municipal waste and foundry sand. The waste is reported by categorizing it as hazardous and non-hazardous waste and according to its treatment (recycled, transported to a landfill or incinerated). In 2014, around 4,411 (5,030) tons of hazardous waste was generated by our operations.

We continue to focus on our target of reducing the amount of waste arising from our operations by 15% by 2020. Our policy is to encourage our production units to take targeted measures to avoid the formation of waste in the first place and to increase the utilization of waste already generated. In 2014, we did not manage to reduce the amount of total waste compared to the 2013 level.

Please note that figures 2012 onwards describe Metso's current structure.

ANNUAL WASTE / NET SALES



- Hazardous waste
- Non-hazardous waste
- Index, waste/net sales*

*The index is proportioned to Metso's net sales.
For comparison, the reference year is 2009 = 100 index value

Sustainability auditing and assurance

Metso controls and monitors sustainability issues through various internal and external processes aimed at ensuring the validity and reliability of our sustainability management practices and reporting. By regularly controlling and monitoring we receive valuable information about the results of our efforts, and it is therefore an important element in our continuous efforts to develop our reporting while also supporting our operations.

We monitor our internal operations through internal audit, internal control, reviewing of non-financial issues, certificates and assurance. Metso's certificates and assurance are significant in relation to our sustainability activities and to the sustainability report. More information about internal audit and reviewing of non-financial issues is available at our web site www.metso.com/sustainability.

Certificates

In our sustainability management we comply with several international standards, such as ISO 9001, ISO 14001 and OHSAS 18001, and many of our business units have gained certification to these standards. 20% of all our operations are covered by ISO 14001 certification, 16% by OHSAS 18001 certification and 58% by ISO 9001 certification. The coverage is calculated by the number of employees working in certified facilities.

Assurance

The consolidated quantitative sustainability performance data in our Annual Report 2014 has been externally assured by PricewaterhouseCoopers Oy. Metso's sustainability report follows GRI guidelines application level B+. Metso's sustainability data has been assured since 2010. Read more about the assurance process in our reporting principles and in the assurance report. The report content is not updated after assurance, and any amendments to the content will be reported in the following year.

GRI and Global Compact Index

Comparison with Global Reporting Initiative guidelines and Global Compact principles.

Status

- Fully reported (F)
- Partly reported (P)
- Not reported (N)

AR = Annual Report 2014

GC = Global Compact

GRI G3.1 guidelines

Code	Content	Status	Online Annual Report 2014	Comments/Remarks
Profile				
1. Strategy and Analysis				
1.1.	The CEO's statement	F	From the CEO	
1.2.	Key impacts, risks and opportunities	F	Sustainability strategy, Climate change, Metso sustainability statement, Sustainability is part of Metso's strategy, Sustainability targets and achievements, Financial targets and achievements, Our strategy	
2. Organizational Profile				
2.1.	Name of the organization	F	This is Metso	
2.2.	Primary brands, products and services	F	Our Strategy, Customer industries,	
2.3.	Operational structure	F	This is Metso, Metso's businesses,	
2.4.	Location of organization's headquarters	F	This is Metso, Contact information	
2.5.	Number of countries and location of operations	F	This is Metso, Global presence,	
2.6.	Nature of ownership and legal form	F	Financial statements 2014	Available in our Financial Statements, on the pages 14-20 in the PDF-file.
2.7.	Markets served	F	This is Metso, Global presence, Our strategy, Geographical key figures	
2.8.	Scale of reporting organization	F	This is Metso, Group key figures, Metso's businesses, Financial statements 2014, Global presence,	In Financial Statements on the page 66 in the PDF-file.
2.9.	Significant changes	F	Reporting principles	
2.10.	Awards received in the reporting period	F	Sustainability indices	
3. Report Parameters				
3.1.	Reporting period	F	Reporting principles	
3.2.	Date of most recent previous report	F	Reporting principles	
3.3.	Reporting cycle	F	Reporting principles	
3.4.	Contact point for questions	F	Sustainability management, Reporting principles,	
Report Scope and Boundary				
3.5.	Process for defining report content	F	Sustainability management, Reporting principles, Prosperity for our stakeholders, Metso People, Community involvement, Sponsorships and donations, Stakeholders, Stakeholder groups	More information about stakeholder dialogue
3.6.	Boundary of the report	F	Reporting principles	
3.7.	Limitations on the report's scope or boundary	F	Reporting principles	
3.8.	Basis for reporting subsidiaries and joint ventures	F	Reporting principles	

3.9.	Data measurement techniques and bases of calculations	F	Reporting principles	
3.10.	Explanations of re-statements	F	Reporting principles	
3.11.	Significant changes from previous reporting periods	F	Reporting principles	
3.12.	GRI content index	F	GRI content index	
3.13.	Assurance policy and practice	F	Reporting principles, Independent assurance report	
4. Governance, Commitments and Engagement				
Governance				
4.1.	Governance structure	F	Corporate Governance, Governing bodies of Metso, Board of Directors, Board of Directors Dec 31, 2014	
4.2.	Position of the Chairman of the Board	F	Board of Directors Dec 31, 2014	
4.3.	Independence of the Board members	F	Board of Directors Dec 31, 2014	
4.4.	Mechanisms for shareholder and employee consultation	F	Compliance with laws and ethical principles, Annual general meeting of shareholders	
4.5.	Executive compensation and linkage to organization's performance	F	Remuneration	Management compensation are not directly linked to HSE indicators.
4.6.	Processes for avoiding conflicts of interest	F	General operating principles	
4.7.	Process for determining expertise	F	Corporate Governance, General operating principles, Nomination board	Follows corporate governance code and Metso's equal opportunity and diversity policy.
4.8.	Implementation of mission and values statements; code of conduct	F	General operating principles, Metso sustainability statement, Sustainability management, Mission and vision	www.metso.com Code of Conduct
4.9.	Procedures of the Board for overseeing management of economic, environmental, and social performance, risk management and compliance with internationally agreed standards and principles.	F	Management model, Risk and risk management, Corporate Governance	
4.10.	Processes for evaluating the Board's performance	F	Corporate Governance, Board of Directors,	
Commitments to External Initiatives				
4.11.	Precautionary principle	F	HSE management, Risk and risk management, Corporate Governance	Risks and risk management www.metso.com/risks
4.12.	Voluntary charters and other initiatives	F	General operating principles, Compliance with laws and ethical principles	
4.13.	Memberships in associations	F	Stakeholder groups	More information about stakeholder dialogue.
Stakeholder Engagement				
4.14.	List of stakeholder groups	F	Stakeholder groups	More information about stakeholder dialogue.
4.15.	Identification and selection of stakeholders	F	Stakeholder groups, Stakeholders, Sustainability management,	Metso has identified its key stakeholders through sustainability materiality process. More information about stakeholder dialogue.
4.16.	Approaches to stakeholder engagement	F	Stakeholders, Investor information, Our strategy	Read also from our Sustainability report cases More information about stakeholder dialogue.
4.17.	Key topics raised through stakeholder engagement	F	Sustainability management, Stakeholders, Stakeholder groups	More information about stakeholder dialogue.

5. Management Approach and Performance Indicators				
	Economic management approach	F	Management model, Sustainability targets, Financial targets and achievements, Sustainable supply chain	
	Environmental management approach	F	Management model, HSE management, Sustainability targets, Environmental targets,	
	Management approach to labor practices and decent work	F	Management model, HSE management, Human resources management, Sponsorships and donations, Our strategy, Sustainability targets, Sustainability strategy, Sustainability management, Society, Community involvement,	
	Human rights approach	F	Sustainability strategy, Sustainability management, General operating principles, Management model, Society, Compliance with laws and ethical principles	
	Product responsibility approach	F	Sustainability strategy, Sustainability management, Sponsorships and donations, Product stewardship, Management model	
Economic Performance Indicators				
EC1	Economic value generated and distributed	F	Prosperity for our stakeholders	
EC2	Financial implications and other risks and opportunities for the organization's activities due to climate change.	F	Sustainability risks and opportunities, Climate change, Our strategy, Risk and risk management	Financial implications of climate change are assessed in our annual CDP Climate Change response. www.metso.com/risks Read more about Sustainability risks and opportunities
EC3	Coverage of the organization's defined benefit plan obligations	P	Human resources management, Performance, Corporate governance, Financial statements in 2014	
EC4	Significant financial assistance received from government	P	Financial statements in 2014	Available in our Financial Statements, on the page 26 in the PDF-file.
EC5	Entry-level wage compared to minimum wage	P	Wages and salaries, Personnel data	
EC6	Spending on local suppliers	P	Sustainable supply chain, Prosperity for our stakeholders	
EC7	Local hiring and proportion of senior management hired from the local community at locations of significant operation	N		
EC8	Infrastructure investments provided for public benefit	P	Society, Community involvement, Global presence, Community involvement cases	
EC9	Significant indirect economic impacts	P	Global presence, Prosperity for our stakeholders	
Environmental Performance Indicators				
EN1	Materials used by weight or volume	P	Environmental figures, Materials	Materials use is part of our environmental reporting. However, the data obtained is not yet comprehensive for all Metso production units.
EN2	Recycled materials used	P	Environmental figures	Recycled materials use is part of our environmental reporting. However, the data obtained is not yet comprehensive for all Metso production units.
EN3	Direct energy consumption	F	Environmental figures, Energy	
EN4	Indirect energy consumption	P	Environmental figures, Energy	
EN5	Energy saved due to conservation and efficiency improvements	F	Environmental targets	
EN6	Initiatives to provide energy-efficient or renewable energy-based products and services	P	Product stewardship	

EN7	Initiatives to reduce indirect energy consumption and reductions achieved	P	Environmental targets	Energy efficiency is part of our environmental reporting. However, any absolute figure at the Group level showing reductions in indirect energy consumption cannot yet be obtained and hence is not included in this report.
EN8	Total water withdrawal	P	Environmental figures, Water	Metso reports water consumption from all production facilities.
EN9	Water sources significantly affected	N		
EN10	Percentage and total volume of water recycled and reused	N		Total volume of water recycled is part of our environmental reporting. However, the data obtained is not yet comprehensive for all Metso production units and hence not included in this report.
EN11	Location and size of land holdings in biodiversity-rich habitats	N		Metso is aware of the global problem of increasing biodiversity loss. However, our activities at our units do not cause significant impacts on biodiversity.
EN12	Description of significant impacts of activities, products, and services on biodiversity	N		Metso is aware of the global problem of increasing biodiversity loss. However, our activities at our units do not cause significant impacts on biodiversity.
EN13	Habitats protected or restored	N		Metso is aware of the global problem of increasing biodiversity loss. However, our activities at our units do not cause significant impacts on biodiversity.
EN14	Managing impacts on biodiversity	N		Metso is aware of the global problem of increasing biodiversity loss. However, our activities at our units do not cause significant impacts on biodiversity.
EN15	Species with extinction risk with habitats in areas affected by operations	N		Metso is aware of the global problem of increasing biodiversity loss. However, our activities at our units do not cause significant impacts on biodiversity.
EN16	Total direct and indirect greenhouse gas emissions by weight	F	Environmental figures, Emissions to air	
EN17	Other relevant indirect greenhouse gas emissions	F	Environmental targets	
EN18	Initiatives to reduce greenhouse gas emissions and reductions achieved	F	Emissions to air, Environmental targets	

EN19	Emissions of ozone-depleting substances	F		Metso does not use any CFCs in its own production. No other relevant sources of ozone depleting substances have been identified either.
EN20	SOx, NOx and other significant air emissions	F	Environmental figures	SOx and NOx emissions resulting from Metso's operations are minor and not considered relevant to Metso's productions. VOC emissions are reported.
EN21	Total water discharge	N		BOD, COD and TSS are included in our environmental reporting. However, these discharges resulting from Metso's operations are minor and not considered relevant to Metso's productions.
EN22	Total amount of waste	F	Environmental figures, Waste, Environmental targets	
EN23	Significant spills	F		No significant spills occurred in 2014
EN24	Transported, imported, exported or treated hazardous waste	P	Environmental figures, Waste	The total amount of hazardous waste is reported in environmental figures. Also the total recycling rate for waste is reported.
EN25	Water bodies and habitats affected by discharges of water	N		BOD, COD and TSS are included in our environmental reporting as well as any negative effects these might have on the environment. However, these discharges resulting from Metso's operations are minor and not considered relevant to Metso's productions.
EN26	Mitigating environmental impacts of products and services	P	Product stewardship, Our strategy, Group key figures, Eco-efficient mining process, Safety and productivity improvements, Less noise in the pipelines	
EN27	Percentage of products sold and their packaging materials that are reclaimed by category	P		Many parts of Metso's products are made of recycled steel and many products are also recyclable at end of life.
EN28	Significant fines and sanctions for non-compliance with environmental regulations	F		No significant non-compliance cases were reported in 2014.
EN29	Environmental impacts on transportation	N		At present, this information is not collected at the Group level. However, this is planned to be done in the future.
EN30	Total environmental protection expenditures and investments	P	HSE management, Environmental targets	
GC 7	Support for precautionary approach to environmental challenges	F	HSE management, General operating principles	Included in Metso's Code of Conduct www.metso.com More information about HSE management.
GC 8	Initiatives to promote greater environmental responsibility	F	Product stewardship, HSE management, Sustainability management, General operating principles	Included in Metso's Code of Conduct www.metso.com More information about HSE management.

GC 9	Development and diffusion of environmentally friendly technologies	F	Product stewardship, Our strategy, Minerals key figures, Flow Control key figures, Group key figures	Included in Metso's Code of Conduct www.metso.com
Social Performance Indicators				
LA1	Breakdown of workforce	F	Personnel data	
LA2	Breakdown of employee turnover and new employee hires	P	Personnel data	
LA3	Employee benefits	P	Human resources management	
LA4	Coverage of collective bargaining activities	P	Human resources management, General operating principles	Metso does not track the degree of employee organization on Group level. However, the recognition of the right to collective bargaining is included in the Metso Code of Conduct.
LA5	Minimum notice period regarding operational changes	F		Metso complies with national legislation.
LA6	Representation in joint management-worker health and safety committees	P	Human resources management, HSE management	
LA7	Rates of injury, occupational diseases, lost days, absenteeism and fatalities	P	Health and safety achievements, Health and safety in figures, Metso People	
LA8	Education and prevention programs regarding serious diseases	N		This topic is not coordinated at the Group level.
LA9	Health and safety topics covered in formal agreements with trade unions	N		This topic is not coordinated at the Group level.
LA10	Average hours of training per year per employee by employee category	N		
LA11	Programs for skills management	F	Developing leadership to support strong performance	
LA12	Employees receiving regular performance and career development reviews	P	Developing professional competencies across Metso,	
LA13	Composition of governance bodies and breakdown of employees	F	Personnel data, Board of directors, Executive team, Personnel demographics	
LA14	Ratio of basic salary and remuneration of men to women	N		We do not engage in or tolerate discrimination based on gender. This data is not collected
LA15	Return to work and retention rates after parental leave, by gender	N		
GC 3	Freedom of association and the effective recognition of the right to collective bargaining	F	Human resources management	Included in Metso's Code of Conduct www.metso.com
GC 4	Elimination of all forms of forced and compulsory labor	F	Human resources management	Included in Metso's Code of Conduct www.metso.com
GC 5	Effective abolition of child labor	F	Human resources management	Included in Metso's Code of Conduct www.metso.com
GC 6	Elimination of discrimination in respect of employment and occupation	F	Human resources management	Included in Metso's Code of Conduct www.metso.com
Human Rights				
HR1	Investment agreements and contracts that include human rights clauses	P	General operating principles	Included in Metso's Code of Conduct www.metso.com

HR2	Significant suppliers and contractors that have undergone human rights screening	P	Sustainable supply chain	The most significant suppliers are informed of Metso's Code of Conduct, which includes human rights issues, through Metso's Sustainable Supplier Criteria.
HR3	Employee training on policies and procedures concerning aspects of human rights	P	General operating principles	Included in Metso's Code of Conduct www.metso.com
HR4	Incidents of discrimination and actions taken	F		No incidents of discrimination were reported in 2014.
HR5	Operations and significant suppliers identified in which the right to exercise freedom of association and collective bargaining may be at risk	P		Included in Metso's Code of Conduct www.metso.com
HR6	Operations and significant suppliers identified as having significant risk for incidents of child labor	P	Sustainable supply chain	Included in Metso's Code of Conduct www.metso.com supplier sustainability criteria. Based on conducted audits, no risk of child labour have been found in Metso's operations and significant suppliers.
HR7	Operations and significant suppliers identified as having significant risk for incidents of forced or compulsory labor	P	Sustainable supply chain	Included in Metso's Code of Conduct www.metso.com and supplier sustainability criteria. Based on conducted audits, no risk of child labour have been found in Metso's operations and significant suppliers.
HR8	Human rights-related training for security personnel	P		Included in Metso's Code of Conduct www.metso.com
HR9	Incidents of violations involving rights of indigenous people and actions taken	F		No incidents were reported in 2014.
HR10	Percentage and total number of operations that have been subject to human rights reviews and/or impact assessments	N		
HR11	Number of grievances related to human rights filed, addressed and resolved through formal grievance mechanisms	N		
GC 1	Support for the protection of internationally proclaimed human rights	F	General operating principles, Human resources management	Included in Metso's Code of Conduct www.metso.com
GC 2	Certainty of not being complicit in human rights abuses	F		Included in Metso's Code of Conduct www.metso.com
Society				
SO1	Operations with implemented local community engagement, impact assessments and development programs	P	Community involvement cases	
SO2	Number of business units analyzed for risks related to corruption	F	Corporate governance, Risk and risk management, compliance management and code of conduct	Risks and risk management www.metso.com/risks

SO3	Employees trained in organization's anti-corruption policies	P	General operating principles	
SO4	Actions taken in response to incidents of corruption	F		Included in Metso's Code of Conduct www.metso.com . No incidents of corruption were reported in 2014. More information about sustainability auditing and assurance.
SO5	Public policy positions and participation in public policy development and lobbying	P	Stakeholder groups, General operating principles	
SO6	Contributions to political parties, politicians and related institutions	F	General operating principles, Sponsorships and donations	Metso does not make political contributions.
SO7	Legal actions for anti-competitive behavior, anti-trust, and monopoly practices	F		Included in Metso's Code of Conduct www.metso.com . No incidents of corruption were reported in 2014.
SO8	Fines and sanctions for non-compliance with laws and regulations	F		Included in Metso's Code of Conduct www.metso.com . No significant incidents of corruption were reported in 2014.
SO09	Operations with significant potential or actual negative impacts on local communities	N		
SO10	Operations with significant potential or actual negative Prevention and mitigation measures implemented in operations with significant potential or actual negative impacts on local communities.	N		
GC 10	Work against corruption in all its forms, including extortion and bribery	F	General operating principles, Sustainability auditing and assurance	Included in Metso's Code of Conduct www.metso.com and Metso Global Anti-Corruption Policy. Any incidents can be reported anonymously through Metso's Whistleblower. More information about Sustainability auditing and assurance.
Product Responsibility				
PR1	Life cycle stages in which health and safety impacts of products are assessed	P	Product stewardship	
PR2	Non-compliance with regulations concerning health and safety impacts of products	F	Product stewardship, Financial statements 2014	No cases of non-compliance regarding product or services reported in 2014, however Metso has old pending asbestos claims and lawsuits within the United States. Available in our Financial Statements, on the page 64 in the PDF-file.
PR3	Type of product and service information required by procedures	N		

PR4	Non-compliance with regulations concerning product and service information and labeling	F	Product stewardship	No cases of non-compliance were reported in 2014.
PR5	Practices related to customer satisfaction	P	Stakeholders, Stakeholder groups	Regular feedback through our comprehensive sales and service network. More information about stakeholder dialogue.
PR6	Adherence to marketing communications laws, standards and voluntary codes	P	Sponsorships and donations, Investor information	Corporate Governance Statement www.metso.com/governance
PR7	Non-compliance with regulations and voluntary codes concerning marketing communications	F		No cases of non-compliance were reported in 2014.
PR8	Complaints regarding breaches of customer privacy	F		No complaints were reported in 2014.
PR9	Fines for non-compliance concerning the provision and use of products and services	F		No cases were reported in 2014.

Independent assurance report

To the Management of Metso Corporation

We have been engaged by the Management of Metso Corporation (hereinafter also the Company) to perform a limited assurance engagement on the consolidated quantitative information on economic, social and environmental responsibility for the reporting period of 1 January 2014 to 31 December 2014, disclosed in Metso Corporation's Annual Report 2014 on Metso Corporation's website (hereinafter Sustainability Reporting).

Management's responsibility

The Management of Metso Corporation is responsible for preparing the Sustainability Reporting in accordance with the Reporting criteria as set out in Metso Corporation's reporting instructions and the G3.1 Sustainability Reporting Guidelines of the Global Reporting Initiative.

Practitioner's responsibility

Our responsibility is to express a conclusion on the Sustainability Reporting based on our work performed. Our assurance report has been made in accordance with the terms of our engagement. We do not accept, or assume responsibility to anyone else, except to Metso Corporation for our work, for this report, or for the conclusions that we have reached.

We conducted our work in accordance with the International Standard on Assurance Engagements (ISAE) 3000 "Assurance Engagements Other than Audits or Reviews of Historical Financial Information". This Standard requires that we comply with ethical requirements and plan and perform the assurance engagement to obtain limited assurance whether any matters come to our attention that cause us to believe that the Sustainability Reporting has not been prepared, in all material respects, in accordance with the Reporting criteria.

In a limited assurance engagement the evidence-gathering procedures are more limited than for a reasonable assurance

engagement, and therefore less assurance is obtained than in a reasonable assurance engagement. An assurance engagement involves performing procedures to obtain evidence about the amounts and other disclosures in the Sustainability Reporting. The procedures selected depend on the practitioner's judgement, including an assessment of the risks of material misstatement of the Sustainability Reporting. Our work consisted of, amongst others, the following procedures:

- Interviewing senior management of the Company.
- Visiting the Company's Head Office as well as three sites in Brazil, Czech Republic and Sweden.
- Interviewing employees responsible for collecting and reporting the information presented in the Sustainability Reporting at the Group level and at the different sites where our visits took place.
- Assessing how Group employees apply the reporting instructions and procedures of the Company.
- Testing the accuracy and completeness of the information from original documents and systems on a sample basis.
- Testing the consolidation of information and performing recalculations on a sample basis

Conclusion

Based on our work described in this report, nothing has come to our attention that causes us to believe that Metso Corporation's Sustainability Reporting has not been prepared, in all material respects, in accordance with the Reporting criteria. When reading our assurance report, the inherent limitations to the accuracy and completeness of sustainability information should be taken into consideration.

Helsinki, 27 February 2015

PricewaterhouseCoopers Oy

Sirpa Juutinen

Partner

Sustainability & Climate Change

Maj-Lis Steiner

Director, Authorised Public Accountant

Assurance Services