

SUSTAINABLE DEVELOPMENT

GLOBAL COMPACT
/ COMMUNICATION ON PROGRESS

AART / archi
tects



**We wish to leave behind a legacy
of wonderful experiences for the
people who inhabit our buildings.**





AART architects A/S

AARHUS

Aaboulevarden 22, 5.sal
DK-8000 Aarhus C

T: +45 8730 3286
aart@aart.dk

www.aart.dk

KØBENHAVN

Njalsgade 19c, 4. sal
2300 København S

T: +45 8730 3286
aart@aart.dk

www.aart.dk

OSLO

Sorgenfrigata 31B / No. H0302
0365 Oslo

T: +45 8730 3286
aart@aart.dk

www.aart.dk



PHOTO CREDITS

Adam Mørk
Jens Markus Lindhe
Kirstine Mengel
Helene Høyer Mikkelsen
André
Nicolai Perjesi
Kranor

TABLE OF CONTENTS

PREFACE	06
HIGHLIGHTS OF 2014 A LOOK BACK AT THE YEAR THAT WAS	08
AART ARCHITECTS PRESENTATION OF OUR PRACTICE	12
CORPORATE SOCIAL RESPONSIBILITY SUPPORTING UNITED NATIONS GLOBAL COMPACT	16
BUSINESS INTERVIEW FORMING THE FUTURE NORDIC WELFARE SOCIETY	20
R&D DEPARTMENT TURNING IDEAS INTO INNOVATION	24
OUR TEAM THE PEOPLE BEHIND OUR PRACTICE	30
PROJECT INTERVIEW THE CULTURE YARD	32
SELECTED PROJECTS PRESENTATION OF OUR LATEST PROJECTS	35

PREFACE



Over the last years, it has been widely recognised that the Nordic welfare states face great challenges. It is not a big bang, which will change society from one day to the next. Instead, it is a slow but surely change that takes place because of demographic and socioeconomic changes.

There is wide agreement that it requires fundamental rethinking if the Nordic welfare states want to meet the challenges ahead. Governments, institutions, businesses and civil society must collaborate in order to open to new perspectives and provide actual solutions to the future challenges.

At AART architects, we recognise this responsibility to act and think innovatively. In our desire to take responsibility and promote sustainable development, we have joined the United Nations Global Compact, which is the largest voluntary corporate social responsibility initiative in the world.

As a member, we are committed to aligning our strategies and operations with ten universally accepted principles in the areas of human rights, labour, environment and anti-corruption. In this way, we contribute to enhancing quality of life and the health of the environment (in the Nordic countries and on a global scale) by promoting the principles within our sphere of influence.

CEO / Torben Skovbjerg Larsen

HIGHLIGHTS OF 2014

/ A LOOK BACK AT THE YEAR THAT WAS

THE GERMAN DESIGN AWARD

The new education centre for VUC Syd in Haderslev, Denmark, was among the winners of the German Design Award 2015. With the award, the German Design Council honours projects and products that uniquely contribute to the international architecture and design landscape.



BØRSEN. GAZELLE 2014



5 X GAZELLE

For the fifth year, we were named as a gazelle company by the Danish financial newspaper Børsen. With more than a sixfold increase of our gross profit since our first gazelle title, we were among the so-called “super gazelles”, which are the top 3.5 percent of the Danish gazelle companies.



OFFICE IN OSLO

Having been involved with Norway for several years, we opened our new office in Oslo in order to strengthen our Norwegian footing and give customer relations top priority.

THE WORLD'S MOST INSPIRING LIBRARIES

The International Federation of Library Associations and Institutions (IFLA) compiled the ultimate library guide, '1001 libraries to see before you die'. We are proud that the Culture Yard in Elsinore made it into the guide to the world's most inspiring libraries.



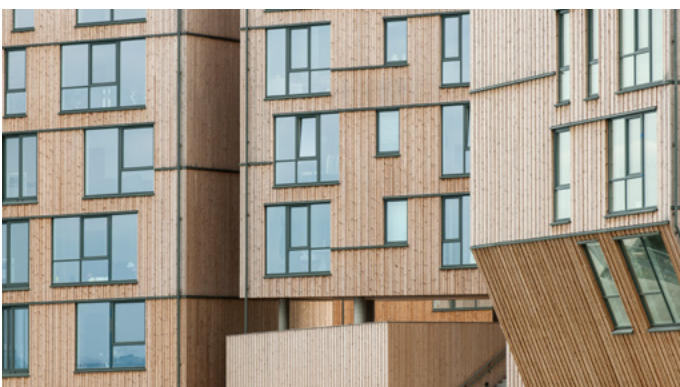


SUCCESSFUL COLLABORATIONS

In 2014, we won several project competitions together with our business partners – ranging from one of the biggest public schools in Norway to a new neurorehabilitation centre in Denmark.

AWARD-WINNING NATURE CENTRE

The Hindsgavl Nature Centre was among the winners at the Energy Efficiency Best of Awards ceremony in Dublin. The award is made biannually by Saint-Gobain ISOVER and honours buildings that lead the way for the future of energy-efficient construction.



KNOCK ON WOOD

We were among the keynote speakers at the conference “Knock on Wood”, which opened the Belgrade International Architecture Week 2014, featuring lectures by architects behind some of the most distinguished Nordic wood constructions - including the 19,000 m2 residential complex the Waterfront in Stavanger.





VUC SYD
HADERSLEV / DENMARK



Currently, we are
developing more than
400,000-sqm in Denmark,
Norway and Sweden.

AART ARCHITECTS

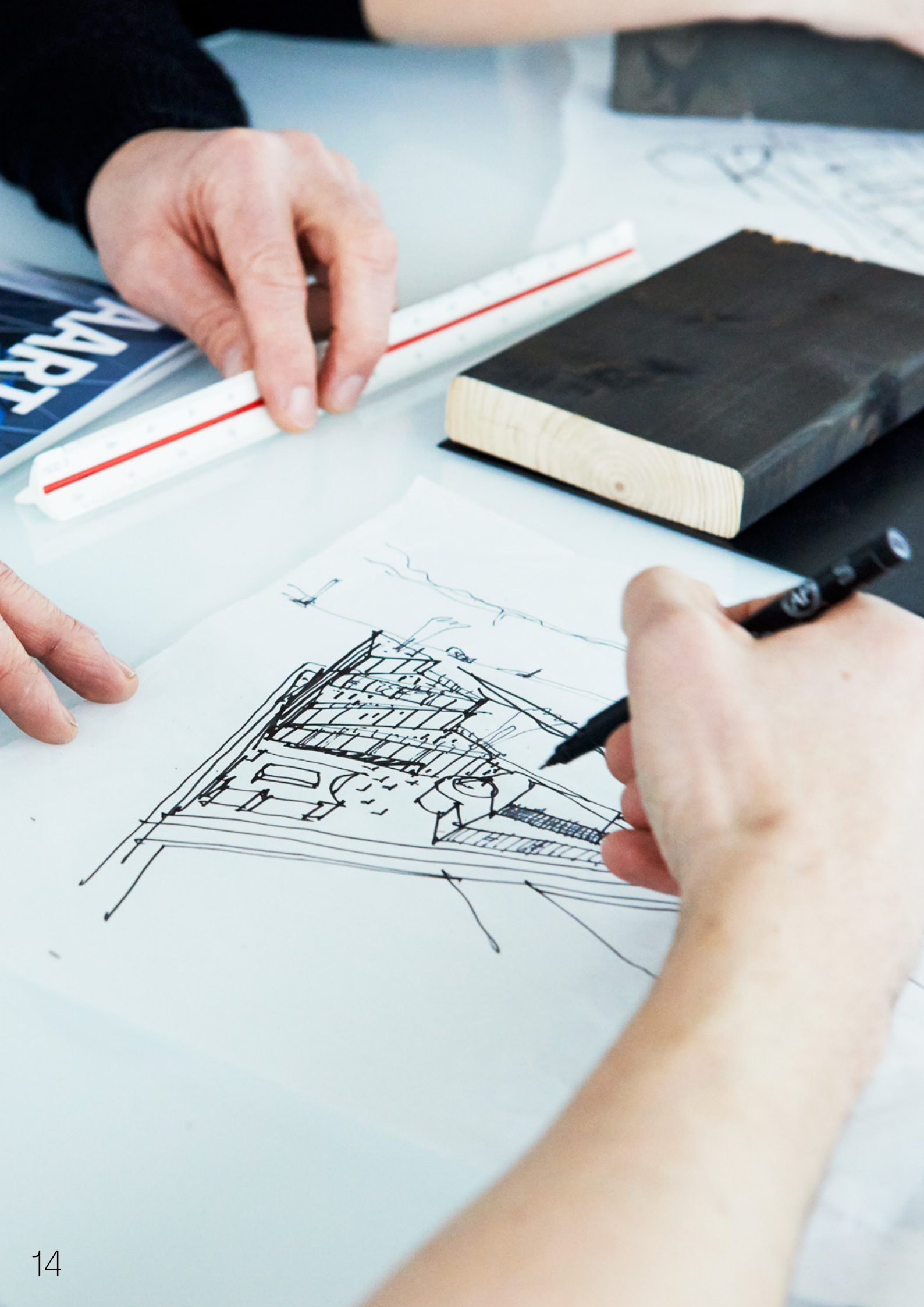
With offices in Aarhus, Copenhagen and Oslo and a team of 65 employees, we are a well-established, Scandinavian architecture practice. We draw on 15 years of experience and work as consultants and management contractors, and as architects at the turnkey contract level.

Over the years we have realised a broad spectrum of projects, including residential, educational, health sector, cultural and office buildings. Several of our projects have been internationally acclaimed and presented in a number of exhibitions at venues, which include the Venice Biennale and the European Parliament in Brussels.

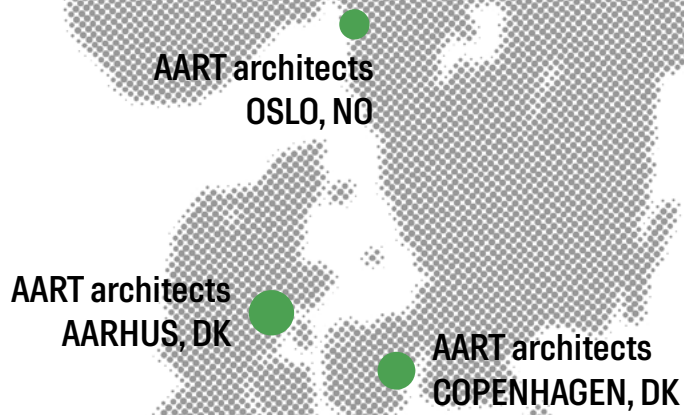


Our passion is developing architecture that provokes evolution - for our clients, business partners and for society. That is why we make a virtue of immersing ourselves in each project's potential and customising our advice to accommodate diverse needs and challenges.

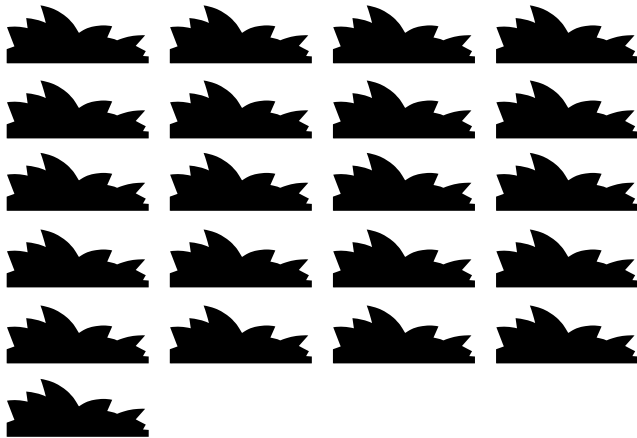
In 2011 we established our research and development department, AART+ with the aim of providing consultancy based on systematic work with knowledge and innovation. That means we have set the professional bar high, and for the fourth year this has secured us recognition as a Gazelle company.



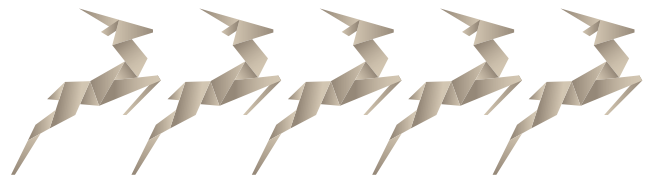
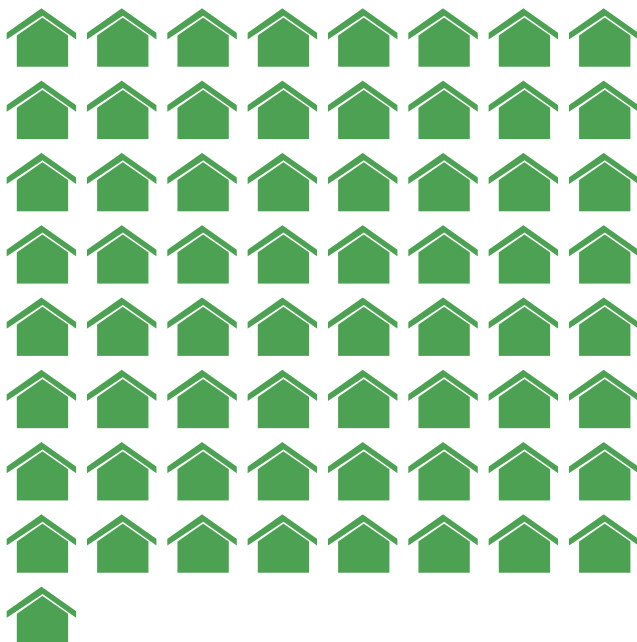
NORDIC ROOTS



Currently, we are developing more than 400,000-sqm.
This is the equivalent of twenty-one Opera Houses in Sydney.



We are currently engaged in sixty-five
projects in Denmark, Norway and Sweden.



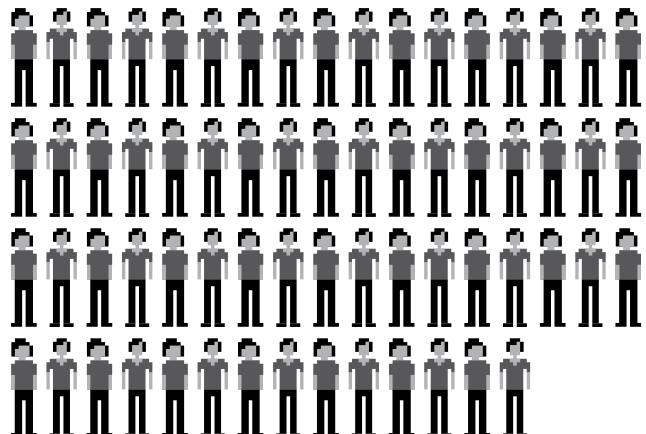
For the fifth year running, we have been appointed as a Gazelle
company by the Danish newspaper Børsen.

As a Gazelle company, we are among the fraction of Danish
companies that meet the high-growth requirements of the
Gazelle criteria. In addition, we are the second strongest
growing architectural firm in Denmark.



Over the last year, we have won eight project
competitions and received four honourable awards.

We are a dedicated team of 65 architects,
designers and construction managers.



CORPORATE SOCIAL RESPONSIBILITY

We are committed to our role as decision-makers for the physical environment. In order to communicate this commitment, we joined the United Nations Global Compact in 2008. The Global Compact is the largest alliance for corporate social responsibility initiative in the world and reflects our commitment to develop socially innovative architecture that create long-term value for our clients, business partners and for society.

The Global Compact builds on ten principles that is of fundamental importance in terms of achieving progress through upholding human rights, implementing international labour standards, protecting the environment and preventing corruption. As a member, we are committed to aligning our strategies and operations with these principles and promote them within our sphere of influence. By doing so, we help to ensure that the building industry advances in ways that benefit not only the Nordic welfare society but also societies around the world.





WE SUPPORT THE GLOBAL COMPACT'S TEN PRINCIPLES

PEOPLE



PRINCIPLE 1: Businesses should support and respect the protection of internationally proclaimed human rights.

PRINCIPLE 2: Businesses should make sure that they are not complicit in human rights abuses.

PRINCIPLE 3: Businesses should uphold the freedom of association and the effective recognition of the right to collective bargaining.

PRINCIPLE 4: Businesses should uphold the elimination of all forms of forced and compulsory labour.

PRINCIPLE 5: Businesses should uphold the effective abolition of child labour.

PRINCIPLE 6: Businesses should uphold the elimination of discrimination in respect of employment and occupation.

ENVIRONMENT



PRINCIPLE 7: Businesses should support a precautionary approach to environmental challenges.

PRINCIPLE 8: Businesses should undertake initiatives to promote greater environmental responsibility.

PRINCIPLE 9: Businesses should encourage the development and diffusion of environmentally friendly technologies.

ECONOMY



PRINCIPLE 10: Businesses should work against corruption in all its forms, including extortion and bribery.



ECONOMIC RESPONSIBILITY

As economic challenges affect the Nordic welfare society more than ever before, we have recognised the need to undertake the responsibility of leading the development of a more efficient, transparent and economically sustainable building culture.

Therefore, we work at the intersection between research and practice with a view to developing cutting-edge project engineering solutions. Project engineering is the most expensive phase in the development of a new building.

Through continuous development work and close collaboration with engineers and researchers, we optimise our planning procedures, as economically sustainable development can only be achieved by encouraging knowledge sharing between various sectors.



WE ENSURE A HIGH QUALITY LEVEL

As part of our economically sustainable focus, we continuously develop our quality assurance procedures, which cover all of the project's core phases, ranging from the competition and concept of the project to the main design and advisory services regarding the implementation and project follow-up.

Through dialogue with our clients and business partners, we define the appropriate quality levels. At the same time, and on the basis of project reviews and planning meetings, we incorporate these quality levels in the service's programming, because a holistic approach to architecture and satisfied clients is the predominant goal of our quality assurance.



WE ENSURE A HIGH ETHICAL STANDARD

As architects, we must respond actively to our ethical responsibility, as trust and credibility form the basis of our public relations. Therefore, we use substantial resources to ensure a high ethical standard in our business strategy and day-to-day operations.

All our employees are thus subjected to the rules and regulation of the Danish Architects' Association, including paragraph 8, which states that an architect must respect the duty of confidentiality regarding any confidential facts the architect gains insight into as part of the daily work.

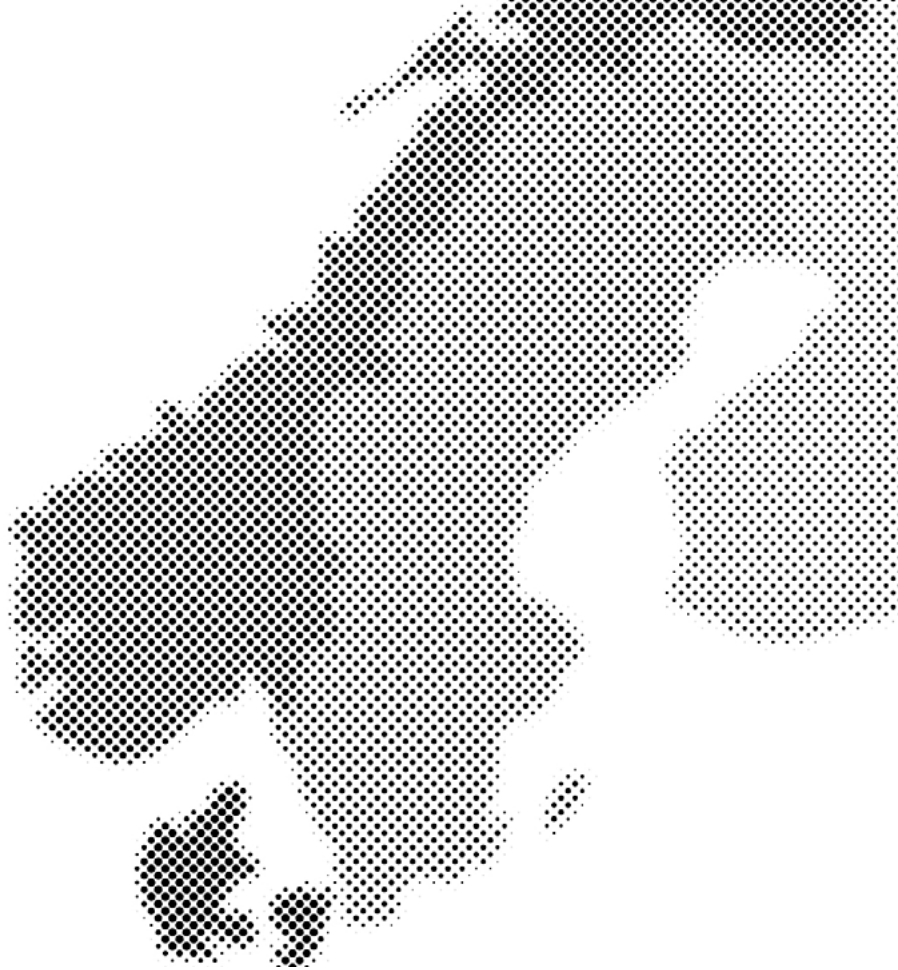


BUSINESS INTERVIEW WITH
TORBEN SKOVBJERG LARSEN,
PARTNER IN AART ARCHITECTS

FORMING THE FUTURE NORDIC WELFARE SOCIETY



TORBEN SKOVBJERG LARSEN
Partner in AART architects



In the 1950s, Nordic architects built a brand new society. Quite literally. Schools, hospitals, sports centres, civic centres and city halls changed appearance for good. It was the golden age of Nordic architecture. It was the construction of the welfare society, which for more than 50 years has brought remarkable benefits for the Nordic countries. Latest, a special report by the internationally acknowledged magazine the Economist highlights the Nordic countries as global role models.

“The Nordics cluster at the top of league tables of everything from economic competitiveness to social health to happiness. They have avoided both southern Europe’s economic sclerosis and America’s extreme inequality. Development theorists have taken to calling successful modernisation ‘getting to Denmark’,” the Economist highlights.

THE WELFARE SOCIETY FACES GREAT CHALLENGES

However, the Nordic welfare society has embarked on a huge transformation that will have profound consequences many years into the future. It is not a big bang, which will change society from one day to the next. Instead, it is a slow but surely change that takes place because of growing welfare services and decreasing resources.

“There is wide agreement that the existing welfare society requires fundamental rethinking so as to meet the challenges ahead,” Torben Skovbjerg Larsen, CEO and partner in AART architects, points out.

“At AART architects, we are aware of our role as decision-makers for the built environment and thus the design of the future welfare society. Therefore, we not only create robust, beautiful and functional architecture. We also explore the ways in which society evolves and changes so that we are able to open to new perspectives on the future of Nordic welfare architecture,” he elaborates.

BIKUBEN STUDENT RESIDENCE

COPENHAGEN, DENMARK



THE WATERFRONT

STAVANGER, NORWAY



INSPIRIA SCIENCE CENTER

SARPSBORG, NORWAY



IT'S ALL ABOUT CREATING SUSTAINABLE VALUE

However, how can architecture give form to the future wealth and welfare? How can it provide tangible solutions for the challenges that the Nordic countries face? According to Skovbjerg Larsen, it is about combining socially innovative architecture with market leading work processes. It is about creating 360° sustainable value for both developers, end-users and for society.

"We work systematically with combining high efficiency with research in the dynamics of modern society. Thus, architecture becomes a much wider practice than merely the art of making buildings. It becomes a productive and problem-solving way of working with people from various fields of engineering, social sciences and humanities. In this way, we take an investigative approach to architecture," he explains.

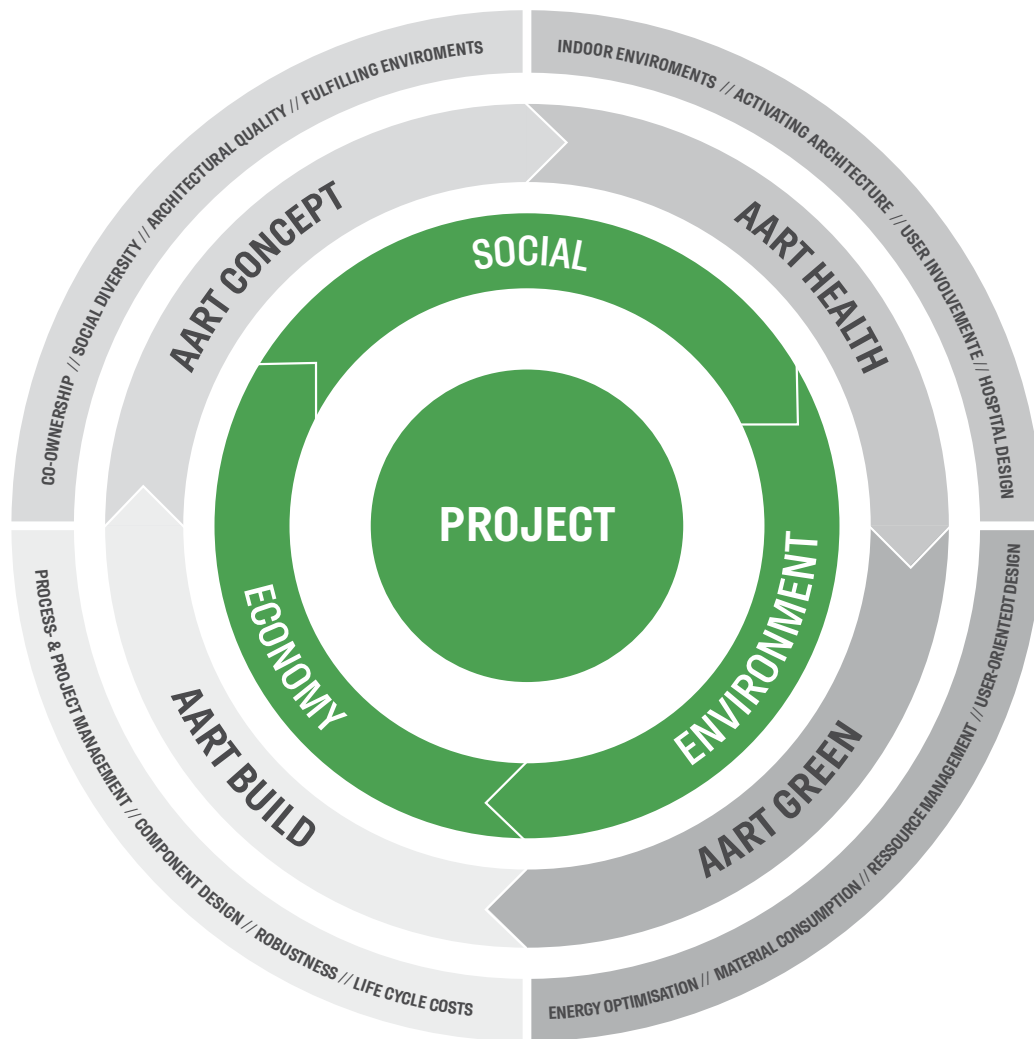
"In our desire to face future challenges and push the potential of architecture we have established AART+, our own dedicated research department. Because in order to give form to the future wealth and welfare you have to gain a deep understanding of the complexity of the built environment and how it affects contemporary life. Only by doing this you are able to provide 360° sustainable value."

"This investigative and socially innovative approach manifests itself in many of our completed projects, ranging from the Bikuben Student Residence designed to counteract loneliness, to the Waterfront designed to inject new life into Stavanger's harbourfront, to Inspiria Science Center awarded as one of the most sustainable buildings in Europe."

"Just as important, each of the projects has proven to be an economic success. For instance, the Bikuben Student Residence was cheaper than traditional social housing, the buyers flock to the Waterfront and Inspiria Science Center has attracted much more visitors than expected," he wraps up.

R&D DEPARTMENT

24



TURNING IDEAS INTO SUSTAINABLE SOLUTIONS

In 2011, we established AART+, our own dedicated research department. By working at the intersection between research and commercial development, AART+ specialises in developing and implementing sustainable solutions in our building projects.

In order to promote sustainable innovation we have organised our AART+ into four teams: AART concept, AART build, AART green and AART health. Together the teams offer a 360° design perspective by which we are able to identify the innovative potential in each project.

In this way, AART+ is closely involved in all of our projects. By listening to our clients' needs and promoting cross-disciplinary cooperation, AART+ develops state-of-the-art solutions that combine architectural innovation with a deep understanding of people and the environment.

In more than ten years, architectural innovation has imbued our practice. Over the years, we have engaged in several research and development projects, ranging from the development of state-of-the-art active houses, to student residences designed to counteract loneliness, to cultural centres designed to inject new life.



NANNA FLINTHOLM
MA in Architecture
Head of AART concept

Nanna Flinholm ensures a targeted development work based on her analytical approach to optimising and rethinking the conceptual phase.

AART CONCEPT

AART concept takes an innovative approach to the conceptual design phase. By working research-minded with user involvement and different building typologies, the team ensures that we remain an innovative practice with an eye for future opportunities and challenges.



THE CULTURE YARD
ELSINORE, DENMARK



THE NEW ØSTFOLD HOSPITAL
GRAALUM, NORWAY



KARSTEN SINNING
MA in Architecture
Head of AART health

Karsten Sinning ensures a targeted innovation work based on his long-standing experience in health promoting architecture.

AART HEALTH

AART health works at the intersection between research and practice in order to offer expert consultancy in hospital architecture. Based on research-based design processes the research team brings the new ideas into play with the desire to combine healing architecture with operational efficiency and highly functional operating solutions.

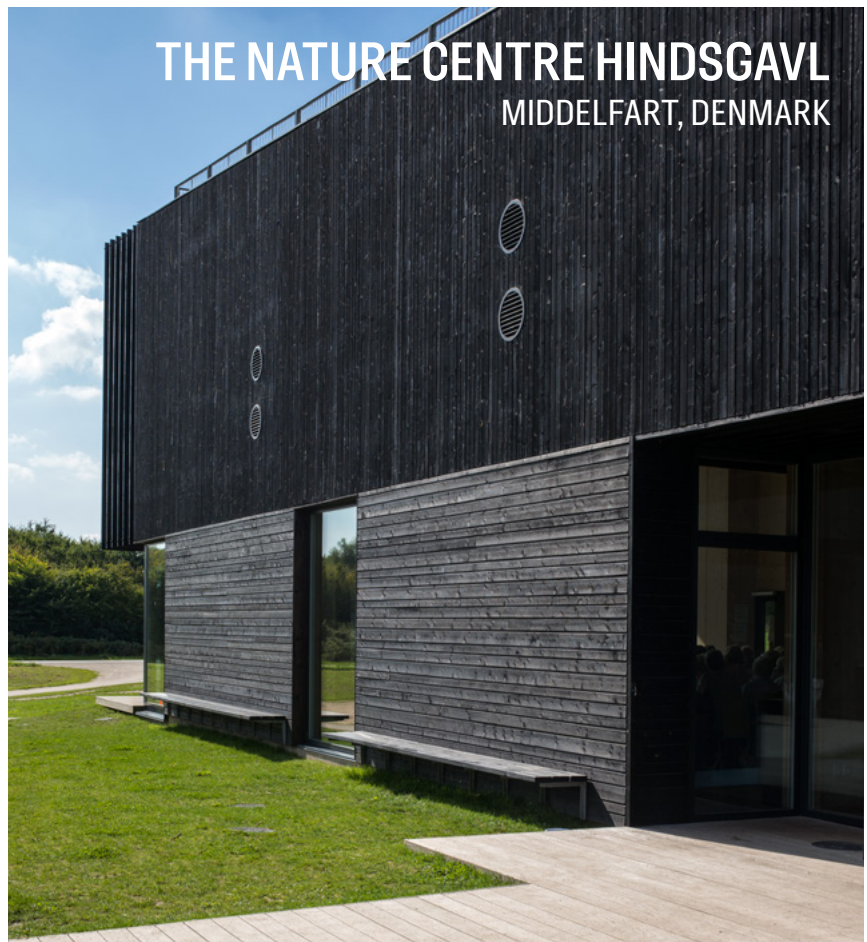


MARTIN GERTSEN
Construction manager
Head of AART green

Martin Gertsen ensures a focused development work based on his insight into the many aspects of environmentally friendly architecture.

AART GREEN

AART green works research-minded with sustainable materials and technologies with the desire to lead the way for the next generation of sustainable architecture. The team's objective is to ensure that we maintain our position as one of Scandinavia's leading architectural practices in sustainable design and architecture.



THE NATURE CENTRE HINDSGAVL
MIDDELFART, DENMARK



THE CULTURE YARD
ELSINORE, DENMARK



THOMAS HJORTLUND SVENDSEN
Construction manager
Head of AART build

Thomas Hjortlund Svendsen ensures a professional focus based on his vast experience as a project manager of several major building projects.

AART BUILD

AART build strives to achieve the highest architectural quality in our completed buildings. Through research and cross-disciplinary collaboration, the team works research-minded with components and construction methods, and new ways in which they can be brought into play and put into practice.

R&D CASES

THE NATURE CENTRE HINDSGAVL HINDSGAVL NATURE RESERVE, DENMARK

R&D CASE / **ECO-FRIENDLY EXPERTISE**

Over the years, we have developed several award-winning buildings where we have shown that society has much more to gain from building sustainably than simply a clean conscience. Sustainable construction is also capable of blazing the trail for more vigorous and dynamic architecture.

We thus provide highly specialised consultancy services in the area of sustainable construction. In order to be at the cutting edge of a more vibrant sustainable architecture, we work proactively with sustainable construction and specialise in implementing innovative sustainability initiatives in our many projects.

In 2013, we were certified passive house designer by which we offer consultancy on the design of passive houses. We were also certified DGNB consultant by which we have an in-depth knowledge of the new Danish sustainable certification scheme.





THE CULTURE YARD ELSINORE, DENMARK

R&D CASE / **SOCIAL SURVEY METHOD**

In partnership with the Alexandra Institute and with the support of the Danish Ministry of Science, Innovation and Higher Education, we have developed a social survey method of evaluating the social effects of buildings, i.e. how and to what extent the built environment creates social value by enriching user experiences.

In 2013, we published a book about our social survey method. In the book, we present a selection of cases. We also show how the social survey method can be applied to any building and how it gives our clients a deeper understanding of how users utilise and experience the completed structure.

The aim of our social survey method is to study how and to what extent our finished buildings meet the original social ambitions such as well-being, accessibility and social facilities. This is what we mean when we talk about documenting the social effect of buildings.



OUR TEAM

MEET THE PEOPLE BEHIND OUR PRACTICE







PROJECT INTERVIEW WITH
ANDERS TYRRESTRUP,
PARTNER IN AART ARCHITECTS

THE CULTURE YARD



In many years, the attention has been aimed at the site adjacent, where the UNESCO World Heritage site, Kronborg Castle, which is famous for its role in Shakespeare's Hamlet, exerts its magnetic pull on both tourists and local citizens of Elsinore. However, in 2010 Elsinore's old shipyard was transformed into a 13,000 m² cultural centre, including concert halls, showrooms, conference facilities, a dockyard museum and a public library.

"The very inspiring challenge of the Culture Yard was to balance the respect for both pasts with the ambition to express a new identity. Our approach has quite simply been to make the contrast between new and old very clear. Punctuating and sewing together the existing buildings gives nuanced spatial experiences and direct visual contact from the refurbished shipyard toward Kronborg Castle and the sound," Anders Tyrrestrup, partner in AART architects, explains.

Tyrrestrup was one of the main architects behind the Culture Yard, which AART architects won in an open architecture competition in 2005. Eighty-seven architectural firms from around the world participated in the competition. According to Tyrrestrup, AART architects' proposal won because of its arcade, which not only preserved and linked the former shipyard buildings together. It also appeared as an open, vibrant venue that would inspire people to meet and hang out.

"The arcade has created a new gathering point for visitors and local citizens. You meet people of every age and from every side of the community, in a fantastic intersection of history, harbour and city life. The presence of the past brings a magical dimension to our aim of creating a place with a distinct feeling of community. At the same time, the contrast between new and old creates a diverse setting for multiple users," he highlights.



ANDERS TYRRESTRUP
Partner in AART architects



HEALTH

LATEST PROJECTS

VUC SYD / DK

MUSHOLM BAY HOLIDAY RESORT / DK

CENTRE FOR THE DEACONESS FOUNDATION / DK

NATURE CENTRE HINDSGAVL / DK

NEUROREHABILITATION CENTRE / DK

TORSTVEDT SCHOOL / NO

THE VOSS TECHNICAL COLLEGE / NO

THE WATERFRONT / NO

VESTMYRA SCHOOL / NO

ÖREBO UNIVERSITY HOSPITAL / SE

KUNGÄLV HOSPITAL / SE

VUC SYD

HADERSLEV, DENMARK

COMPLETED IN 2013



THE NEW EDUCATION CENTRE FOR VUC SYD HAS NO TRADITIONAL CLASSROOMS. INSTEAD, TEAM AREAS, PRESENTATION SPACES AND DIALOGUE CUBICLES ALLOW FOR A MORE DIVERSE APPROACH TO EDUCATION.



“MULTI-DIMENSIONAL
AND VISUALLY
IMPRESSIVE, THE
PROJECT PROVIDES
AN UPDATED MODEL
FOR THE PERFECT
INTEGRATION OF
THE LEARNING
ENVIRONMENT AND THE
PUBLIC SPACE.”

DUTTON HAUHART
// THE INTERNATIONAL
ARCHITECTURE MAGAZINE A10





MUSHOLM BAY HOLIDAY RESORT

KORSØR, DENMARK

FIRST PRIZE IN INVITED COMPETITION 2013



THE NEW MULTI-PURPOSE SPORTS HALL RAISES THE BAR FOR ACCESSIBLE ARCHITECTURE BY PROVIDING ALL VISITORS, WHETHER THEY ARE DISABLED OR NOT, THE OPPORTUNITY TO ENJOY AN ACTIVE HOLIDAY.



HEALTH CENTRE FOR THE DEACONESS FOUNDATION

FREDERIKSBURG, DENMARK

FIRST PRIZE IN INVITED COMPETITION 2013

STARTING UP



THE HEALTH CENTRE WILL BE BUILT ALONGSIDE THE DEACONESS FOUNDATION'S HISTORIC BRICK BUILDINGS AROUND AN ATRIUM THAT WILL BECOME THE FOUNDATION'S NEW MEETING PLACE AND OUTWARDS FACE TOWARDS THE CITY.



NEUROREHABILITATION CENTRE

GLOSTRUP / DENMARK

FIRST PRIZE IN INVITED COMPETITION 2013

STARTING UP



WITH THE ESTABLISHMENT OF THE NEW NEUROREHABILITATION CENTRE, GLOSTRUP HOSPITAL IS NOW ONE OF THE WORLD'S LEADING HOSPITALS FOR SPECIALISED REHABILITATION OF PATIENTS WITH SPINAL CORD DISORDERS AND TRAUMATIC BRAIN INJURIES



NATURE CENTRE HINDSGAVL

HINDSGAVL NATURE RESERVE, DENMARK

FIRST PRIZE IN
OPEN COMPETITION 2009
COMPLETED IN 2012



THE NATURE CENTRE
FRAMES THE OUTDOOR
LIFE OF HINDSGAVL
NATURE RESERVE AND
CONTRIBUTES TO MERGE
SOCIAL RELATIONS WITH
OUTDOOR RECREATION.





TORSTVEDT PUBLIC SCHOOL

LARVIK, NORWAY

FIRST PRIZE IN INVITED COMPETITION 2013



THE SCHOOL
WILL BECOME
A DIVERSE
EDUCATIONAL
CENTRE AND ONE
OF THE LARGEST
PUBLIC SCHOOLS
IN NORWAY.



THE VOSS TECHNICAL COLLEGE

VOSS, NORWAY

FIRST PRIZE IN INVITED COMPETITION 2013

STARTING UP



THE VOSS TECHNICAL COLLEGE WILL BE LOCATED IN SCENIC SURROUNDINGS AND DESIGNED AS NORWAY'S LARGEST SCHOOL BUILT OF SOLID WOOD.



VESTMYRA PUBLIC SCHOOL

FAUSKE / NORWAY
STARTING UP



THE SCHOOL IS DESIGNED AS A LEARNING ENVIRONMENT DIVIDED INTO ZONES. THE INDIVIDUAL CLASS LEVELS AND CLASSROOMS ARE CONNECTED TO THE SCHOOL'S CENTRAL ASSEMBLY ROOM LIKE TWO SPOKES OF A WHEEL THAT EXTEND OUT TOWARD A GREEN ACTIVITY PARK.



THE WATERFRONT

STAVANGER, NORWAY

THE FIRST BUILDING PHASE WAS COMPLETED IN JULY 2014



"THE WATERFRONT IS PRAISED AS THE LARGEST WOODEN BUILDING COMPLEX IN NORTHERN EUROPE AND ALL THE JUDGES AGREE ON THE INTERESTING AESTHETIC THAT THE PROJECT BRINGS TO THE TABLE, THAT THE PLANS ARE WORKING, AND THAT IT IS ARTFUL."

CHAIRMAN OF THE JURY
// WAN RESIDENTIAL AWARD 2011





DESIGNED AS ONE
OF THE LARGEST
WOODEN RESIDENTIAL
DEVELOPMENTS
IN EUROPE, THE
WATERFRONT POSITIONS
STAVANGER AS A PIONEER
CITY IN THE FIELD OF
MODERN WOODEN
ARCHITECTURE.
THE FACADE AND
ROOF ARE COVERED
WITH ECO-LABELLED
THERMOWOOD.



KUNGÄLV HOSPITAL

KUNGÄLV, SWEDEN

FIRST PRIZE IN INVITED COMPETITION 2013



"THE DIVERSE HEIGHTS
AND LENGTHS OF THE
NEW WARD BUILDINGS
CREATE A CONVINCING
INTERPLAY WITH THE
EXISTING HOSPITAL."

THE JURY REPORT



ÖREBO UNIVERSITY HOSPITAL

ÖREBRO, SWEDEN

FIRST PRIZE IN INVITED COMPETITION 2013



THE EXPANSION OF THE
UNIVERSITY HOSPITAL
COMBINES HIGHLY
SPECIALISED HOSPITAL
FUNCTIONS WITH
EXCELLENT DAYLIGHT
CONDITIONS AND A DEEP
UNDERSTANDING OF THE
URBAN CONTEXT.





With offices in
Aarhus, Copenhagen
and Oslo, we are a
well-established,
Scandinavian
architecture practice.

We draw on 15 years
of experience and
work as consultants
and management
contractors, and
as architects at the
turnkey contract level.

www.aart.dk

AART / archi
tects