



EUROPEAN DESTINATION RESORT



ENVIRONMENTAL STATEMENT

JANUARY-DECEMBER 2013





CONTENTS

01. PORTAVENTURA ENTERTAINMENT, S.A. UNIPERSONAL _04

1.1 KEY DATA ON PORTAVENTURA RESORT

1.2 NEW ACTIVITIES FOR 2013

1.3 HOW TO IDENTIFY OUR COMMITMENTS

02. ENVIRONMENTAL PROGRAMME _05

2.1 OBJECTIVES AND TARGETS

03. EVALUATION OF ENVIRONMENTAL BEHAVIOUR _08

3.1 WASTES

3.2 WATER

3.3 ENERGY MANAGEMENT

3.4 AIR EMISSIONS AND NOISE

3.5 BIODIVERSITY

3.6 EFFICIENT CONSUMPTION OF MATERIALS

04. ENVIRONMENTAL LEGISLATION _24

05. SIGNATURES _26



01.

PORTAVENTURA

ENTERTAINMENT, S.A. UNIPERSONAL



1.1 KEY DATA ON PORTAVENTURA RESORT

- **Activity:** Tourism and leisure.
- **Location:** Vila-seca/Salou.
- **Telephone:** 977 779 000.
- **Web:** www.portaventura.com
- **Tax Ref.:** A-63.776.306.
- **PortAventura Park/Costa Caribe Aquatic Park - SIC Parks:** 93.21
- **Hotels: PortAventura, El Paso, Caribe and Gold River - SIC Hotels:** 55.10
- **Convention Centre:** SIC 82.30
- **Waste Producer Code:** P-26916.1
- **Shareholders:** 50,1 % Investindustrial, 49,9 % KKR
- **EMAS Registration Number:** ES-CAT-000070
- **Certificate Registration Number for ISO 14001/2004:** 3.00.07048
- **Distintiu de Garantia de Qualitat Ambiental (Environmental Management Standard) for Hotels PortAventura, El Paso, Caribe and Gold River**
- **Member of Club EMAS:** association of EMAS-registered organisations in Catalonia (www.clubemas.cat)
- **Area of Corporate Responsibility:** responsible for the PortAventura Environmental Management System (EMS)
- **Environmental investment for the year 2013:** €210,152.51
- **Visitors to PortAventura Park (PA) in 2013:** 3.368.010
- **Visitors to Costa Caribe Aquatic Park (CCAP) in 2013:** 323.353
- **Hotel PortAventura (HPA) overnight stays in 2013:** 317.118
- **Hotel El Paso (HEP) overnight stays in 2013:** 167.979
- **Hotel Caribe (HC) overnight stays in 2013:** 212.999
- **Hotel Gold River (HGR) overnight stays in 2013:** 214.933
- **Convention Centre (CdC) visitors in 2013:** 44.461

1.2 NEW ACTIVITIES FOR 2013

- He resort's water park, Costa Caribe Aquatic Park, is refurbished with a new children's area, the highest slide in Europe and new attractions.
- Opening of the maze El Secreto de los Mayas in PortAventura Park.

1.3 HOW TO IDENTIFY OUR COMMITMENTS



02.

ENVIRONMENTAL
PROGRAMME

2.1 OBJECTIVES AND TARGETS

Environmental objectives are proposed by the Equip Verd and then approved by the Environmental Management System Representative, together with the Head of each department concerned.

The environmental objectives are consistent with the Environmental Policy, applicable laws and PortAventura's significant environmental aspects and include a commitment to continual improvement of its environmental strategies.

At the Equip Verd Environmental Committee meetings, the progress of these objectives is monitored and the outcomes recorded in the "SEMS" Environmental Management software.

Here follow the tasks carried out in the 2013 financial year aimed at achieving the objectives defined.

► ENVIRONMENTAL OBJECTIVE (EOB) ► 2013 TARGETS

EOB136. Implementation of initiatives to encourage visitors to respect the environment.

- Related to principle number 7 of the Environmental Policy.
- Estimated date of completion: 31/12/2014

Task T19: Reusable bags available to customers in resort shops.

Task T34: Acquisition of 8 new double containers for waste segregation in the Polynesia area..

Task T35: Post box design paper bins for visitors to deposit used PortAventura Park guides at the end of their visit, thereby ensuring the correct recycling of these guides.

Task T37: Promote sustainable mobility amongst our visitors by offering a combination ticket to PortAventura, which includes return travel by train and entry into PortAventura Park.

Encourage the use of new technologies by providing our visitors with a new PortAventura APP for phones and tablets, which includes an interactive map. In this way we cut down on printed materials.

Task T39: Acquisition of 7 double containers for waste segregation in Costa Caribe Aquatic Park.

Task T40: Perform environmental assessment with a survey of hotel guests. The objective evaluation is: no. of initiatives executed/no. of initiatives proposed each year.

Level of attainment: 60% of initiatives planned for this year have been implemented.



EOB138. Improving environmental conduct of our suppliers. Full environmental evaluation of suppliers.

- Related to point numbers 5 and 10 of the Environmental Policy.
- Estimated date of completion: 31/12/2015

Task T8: Within the Responsible Procurement Plan environmental criteria, the following environmental criteria tabs have been created for certain purchases:

- foodstuffs
- textiles
- office equipment and materials»
- publications
- toner and ink cartridges

Task T9: We have expanded the Responsible Procurement Plan questionnaire, which is sent to all of our suppliers to fill in.

Level of attainment: An environmental assessment has been carried out on 49.76% of PortAventura suppliers.

CONTINUED ON NEXT PAGE ►►

02.

ENVIRONMENTAL PROGRAMME

<p>EOB139. To improve waste management within the resort. To reduce the amount of waste generated per million visits by 6% in 2013 compared to the average of the last 3 years.</p> <ul style="list-style-type: none"> ► Related to principle number 9 of the Environmental Policy. ► Environmental Impact: contamination of soil and/or water. ► Estimated date of completion: 31/12/2013 	<p>Task T9: Reduce consumption of rags used in the workshops.</p> <p>Task T21: Replace plastic bags with reusable and washable cloth bags for transporting textiles from the hotels and restaurants to our external laundry services.</p> <p>Task T22: Using the Protocol for Textile Deliveries to PortAventura, ask suppliers to minimise the packaging of textiles.</p> <p>Task T23: Include a clause for minimisation of packaging and containers at source in contracts with suppliers of services and materials and in the orders that we have with them.</p> <p>Task T25: Promote the reuse of materials by donating disused furniture, clothing and toys.</p> <p>Level of attainment: An 8.75% reduction of the waste generated per million visits in relation to the average of the last 3 years has been achieved.</p>
<p>EOB142. To reduce CO2 emissions by 2% in relation to 2012.</p> <ul style="list-style-type: none"> ► Related to principle number 8 of the Environmental Policy. ► Estimated date of completion: 31/12/2013 	<p>Task T13: Acquisition of 6 electric buggies for internal transportation.</p> <p>Level of attainment: Equivalent emissions of CO2 issued in 2013 have increased by 8.51% in relation to 2012.</p> <p>This is mainly attributed to the increase in the conversion factor for electricity consumption of kg of CO2/kWh in accordance with the new version of the practical guide for calculating emissions of greenhouse gases (GHG) issued by the Office of Climate Change in 2013 compared to the previous 2012 conversion factor. Causes are external to the company. If the conversion factor had remained the same, there would have been a decrease of 1.81%.</p>
<p>EOB143. Reduction of drinking water by 7% in relation to 2012.</p> <ul style="list-style-type: none"> ► Related Environmental Aspects: Consumption of drinking water ► Environmental impact: consumption of natural resources and water pollution. ► Estimated date of completion: 31/12/2013 	<p>Task T7: Preventive review, test drinking water network for leaks.</p> <p>Task T10: Changing the chlorination system for the swimming pools at hotels El Paso and Caribe.</p> <p>Task T11: Daily checks using water meters.</p> <p>Task T12: Installation of new meters to improve control of consumption.</p> <ul style="list-style-type: none"> - General drinking water meter for the entire resort, with automatic meter reading system (hourly readings). - Additional meters: meter for works BR2014, meter for pools 1 and 2 in Costa Caribe Aquatic Park. <p>Level of attainment: In 2013 there was a 7.11% reduction in the consumption of drinking water in relation to 2012.</p>
<p>EOB144. Reduction in consumption of electricity by 1.73% in relation to 2012.</p> <ul style="list-style-type: none"> ► Related to item no. 9 of the Environmental Policy. ► Related environmental aspects: Consumption of electricity. ► Environmental impact: depletion of natural resources. ► Estimated date of completion: 31/12/2013 	<p>Task 18: Installation of lighting system with motion detectors in the changing rooms of building 112 for maintenance personnel.</p> <p>Task 23: Centralisation in building 110 of all office staff.</p> <p>Task 25: Raise awareness amongst PortAventura staff about the need to communicate to CECO (Control Centre) energy disconnections when exceptional connections are made.</p> <p>Task 26: Replace light fixtures with more efficient models in the Mediterrània shops area, exterior road lighting for clients, in the catering units in the Mediterrània area and in workshop buildings.</p> <p>Level of attainment: Electricity consumption has increased by 2.12% in absolute terms compared to the previous year.</p> <p>This increase is due to the greater number of days that the park and hotels have remained open in high season and extension of the opening times.</p>

CONTINUED ON NEXT PAGE ►►


Task T5: 2013 Internal Environmental Awareness Campaign:

- Communication of use of anti-spill equipment.



- Good environmental practices in the catering sector (waste management, minimisation of energy consumption).



- Dissemination of environmental logos on the fleet of electric buggies.



The objective assessment is: no. of initiatives executed/no. of initiatives proposed each year.

Level of attainment: 50% of the initiatives planned for this year have been implemented.

The following proposed initiatives are postponed until next year:

- Communication to enhance the detection of opportunities for improvement.
- Communication of handling of hazardous materials and safety data sheets.

EOB145. Improvement in environmental behaviour.

► Related to item no. 2 of the Environmental Policy .

► Estimated date of completion:
31/12/2014

03.

EVALUATION OF ENVIRONMENTAL BEHAVIOUR



3.1 WASTES

Since the Resort opened to the public in 1995, motivated by the desire to improve and a spirit of environmental commitment, PortAventura has progressively increased the quantities of fractions of wastes segregated at source.

PortAventura has a waste management area and contracts companies specialising in the sector for this purpose. These companies take charge of installing containers for the collection of different types of waste, and deal with collection and transportation to the authorised agent for treatment and conversion.

Waste management

The number of generated fractions of waste will always be variable, as business operations are variable. Due to the particular nature of the facilities, wastes will vary according to operational needs.

With the objective of minimising the generation of waste, the company works with contractors and its own personnel for the recycling and the proper use of work materials. In 2013, 35 fractions of waste were segregated.

The number of waste fractions has been reduced. This is attributed to the fact that some wastes generated in 2012 were not generated in 2013, as in 2012 exceptional maintenance was performed on some attractions, and also the extraordinary removal of disused chemicals and special cleaning jobs.

Following the dynamics of 2012, waste-to-energy is being increasingly favoured over waste treatment.

Here follows a table containing the main characteristics of PortAventura's waste management system:

WASTE		Type 1	Type 2
		Wastes generated by normal business operation, directly or indirectly produced by our clients	Wastes generated by company support and structural activities
METHOD OF COLLECTION		Itinerant	Individual
CONTAINERS	Non-special	1m³ /5m³/6m³/bins/big bags	5m³/14m³/20m³/30m³/big bags
	Special	Special big bags/cylinders 150 l/ cube container 1m³	Special big bags/cylinders 150 l/ cube container 1m³
COLLECTION POINTS	Non-special	Throughout the resort	Throughout the resort
	Special	Throughout the resort	Green points next to buildings no. 112, 113 and resort workshops

CONTINUED ON NEXT PAGE ►►



	Type 1	Type 2
NON-SPECIAL FRACTIONS OF WASTE	Cooking oil Cardboard Food cans Glass containers Light packaging Mixed waste (general and MSW) Household batteries Plastic Organic Wastes	Bulky general waste Copper cable Cardboard Scrap metal Light packaging Rubble Wood Mixed waste (general and MSW) Household batteries Tyres Plastic Animal remains Plant waste, straw Toner Cooking fats
SPECIAL FRACTIONS OF WASTE	Contaminated product containers	<ul style="list-style-type: none"> - Absorbents - Mineral oil - Empty aerosols - Batteries and accumulators - Used fats and waxes - Electronic scrap - Contaminated product containers - Cooking fats - Oil filters - Fridges - Fluorescents - Gases in pressurised containers - Laboratory chemical products - Waste paint - Water-based cleaning fluids - Paint waste with organic solvents or hazardous substances - Other solvents and mixed solvents - Silicones

Furthermore, some PortAventura suppliers directly manage their own wastes.

Evolution of the different waste fractions

Waste	CER	Tonnes (2011)	T/million visits (2011)	Tonnes (2012)	T/million visits (2012)	Tonnes (2013)	T/million visits (2013)
Absorbents	150202	4.72	1.01	5.80	1.25	5.00	1.07
Acids	060106			0.27	0.06		
Animal remains	020102					0.05	0.01
Batteries	160601	0.16	0.03				
Batteries and accumulators	200133	1.48	0.32	1.17	0.25	0.05	0.01
Bulky general waste	200307	26.38	5.65	34.70	7.49	38.18	8.21
Cardboard	200101	402.48	86.27	361.36	77.97	367.50	79.05
Contaminated containers	150110	7.22	1.55	6.50	1.36	5.76	1.24
Cooking fats	020204	38.34	8.22	55.14	11.90	50.86	10.94
Cooking oil	200125	31.67	6.79	24.29	5.24	21.80	4.69
Copper cable	170411	1.00	0.21	1.10	0.24	0.42	0.09
Cylindrical batteries	160604	0.33	0.07	0.33	0.07	0.27	0.06

CONTINUED ON NEXT PAGE ►►

03.

EVALUATION OF ENVIRONMENTAL BEHAVIOUR



Waste	CER	Tonnes (2011)	T/million visits (2011)	Tonnes (2012)	T/million visits (2012)	Tonnes (2013)	T/million visits (2013)
Empty aerosols	150111	0.51	0.13	0.10	0.02	0.38	0.08
Electronic scrap	200135	4.09	0.88	6.29	18.51	2.65	0.57
Fluorescents	200121	1.14	0.24	0.91	0.02	0.94	0.20
Fridges	200123					0.42	0.09
Gases in pressurised containers	160504	0.32	0.07	0.47	0.20	0.09	0.02
Gases in pressurised containers	160504			0.47	0.10		
Glass containers	200102	82.77	17.74	80.59	1.40	73.02	15.71
Hydraulic mineral oil	130110			3.32	0.72		
Inorganic wastes	160303			0.07	0.02		
Laboratory chemical products	160506	2.58	0.55	1.62	0.35	0.17	0.04
Mineral oil	130205	4.49	0.96	9.64	2.08	0.42	0.09
Mixed light packaging	150106	106.06	22.73	112.39	17.39	108.10	23.25
Mixed waste (general + MSW)	200301	1,666.89	357.30	1,626.02	350.82	1,576.21	339.05
Oil filters	160107	0.09	0.02	0.11	72.93	0.04	0.01
Oily waters	120109	13.92	2.98				
Organic wastes	200108	403.42	86.47	434.75	93.80	445.25	95.78
Other solvents and mixed solvents	140603	0.22	0.05	0.18	0.04	0.28	0.06
Pallets	150103	23.63	5.06				
Paint waste with organic solvents or hazardous substances	080111	0.73	0.16	1.95	0.42	1.05	0.23
Petrol	130702			0.02			
Plant wastes. straw	200201	3.10	0.66	0.56	0.12		
Plant wastes. straw	200202	75.50	16.18	55.92	12.07	58.98	12.69
Plastic	200139	11.75	2.52	10.59	2.28	8.13	1.75
Rubble	170107	260.64	55.87	338.04	24.25	221.82	47.71
Scrap metal	200140	99.86	21.14	85.80	0.00	70.90	15.25
Silicone	080409			0.58	0.12	0.27	0.06
Sludge and waste water	160708			7.76	1.67		
Solvents	140602			0.03	0.01		
Toner	080318	0.05	0.01	0.01		0.09	0.02
Tyres	160103	0.54	0.12			3.22	0.69
Used fats and waxes	120110			0.13	0.03	0.12	0.03
Used fats and waxes	120112	0.10	0.02	0.27	0.06	0.22	0.05
Water-based cleaning fluids	120301			2.28	0.49	0.11	0.02
Water-based wastes with hazardous substances	161001			1.03	0.22		
Wood	200138	93.98	20.14	100.70	21.73	86.78	18.67
Total waste generated in tonnes		3,370.26	722.42	3,372.78	727.70	3,149.54	677.49

PortAventura's waste management is coordinated throughout the resort. Tonnes of waste generated are rounded to 2 decimal places.



General evolution of wastes (t)



Tonnes rounded to 2 decimal places.

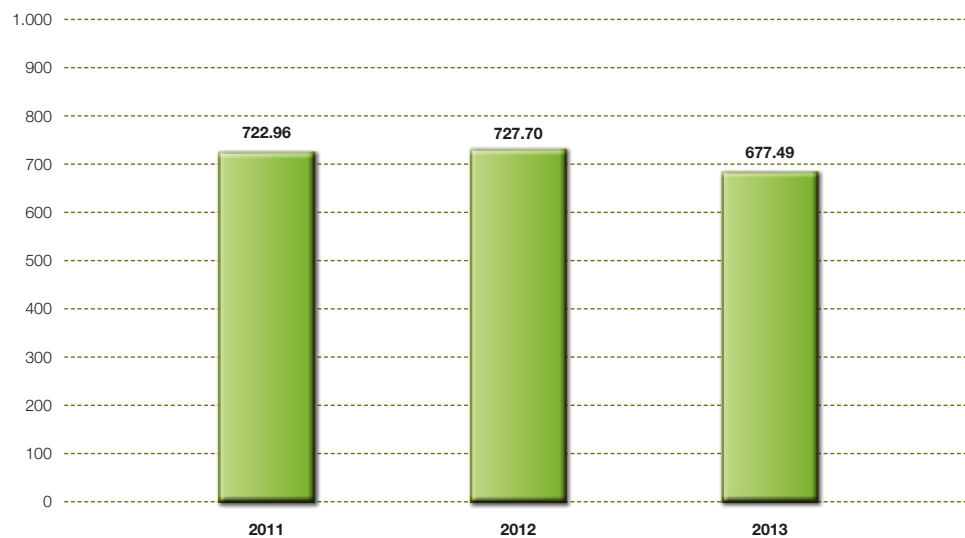
In absolute values, in 2013 waste generation decreased by 6.62% compared to 2012.

This is attributed to internal awareness policies regarding waste minimisation and actions for reuse and promotion of good environmental practices amongst our contractors.

677.49 tonnes of waste have been generated per million visits.

The chart below shows the evolution of waste generation per million visits during the period 2011-2013.

Evolution of waste generation per million visits (t)



Tonnes rounded to 2 decimal places.

03.

EVALUATION OF ENVIRONMENTAL BEHAVIOUR



Special wastes



In 2013 special wastes represent 1% of the total of wastes generated, which remains the same as in 2011 and 2012.

A 64.42% reduction in special wastes generated was noted, compared to the 2012 season. This reduction is attributable to:

► Mineral oil:

- 188% increase of this waste due to extraordinary maintenance operations at some attractions in 2012.
- Changes in maintenance organisation mean that management of this waste scheduled for 2013 will take place in 2014.
- Streamlining of equipment: for example, the investment in the steam engine, which has changed to diesel, represents a decrease in maintenance.
- Change of fleet: we have gone from traditional cars to electric vehicles and this has resulted in the elimination of waste and oil filters.

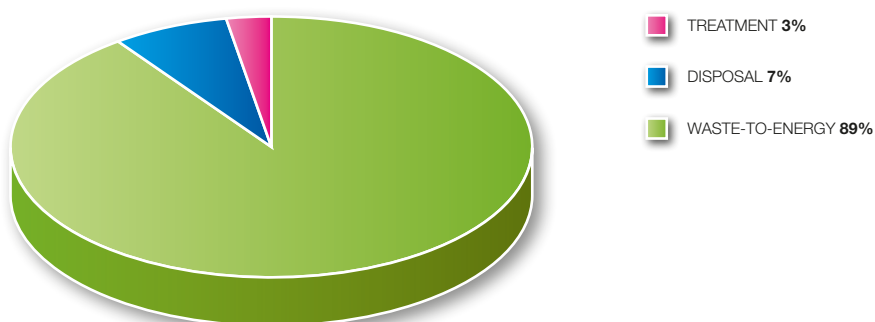
► In 2012, disused chemicals were disposed of, which generated a 290% increase of waste fats and waxes and a 358% increase of waste paint.



Management routes

Wastes were handled according to the following management routes:

Percentage distribution of waste management by management route 2013



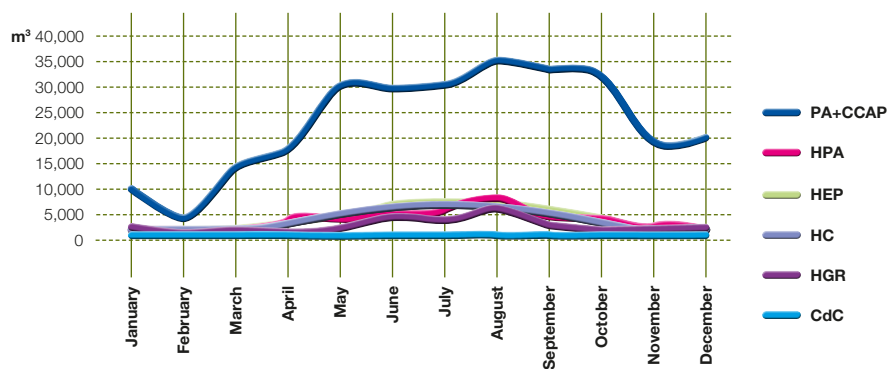
The evolution of the waste management routes between 2011 and 2013 has been as follows:

Management	Distribution 2011 (%)	Distribution 2012 (%)	Distribution 2013 (%)
Waste-to-energy	90	88	89
Treatment	2	2	3
Disposal	8	10	7

3.2 WATER

Water for human consumption

Water for human consumption 2013



03.

EVALUATION OF ENVIRONMENTAL BEHAVIOUR



Water for human consumption, in m³ per visitor-overnight stay and year

	2010	2011	2012	2013
PortAventura/Costa Caribe Aquatic Park	0.0753	0.0781	0.0677	0.0743
Hotel PortAventura	0.2060	0.1318	0.1562	0.1272
Hotel El Paso	0.2057	0.2040	0.2134	0.1795
Hotel Caribe	0.1801	0.1697	0.1749	0.1773
Hotel Gold River	0.1442	0.1425	0.2335	0.1648
Convention Centre	-	-	0.0277	0.0173

Data rounded to 4 decimal places

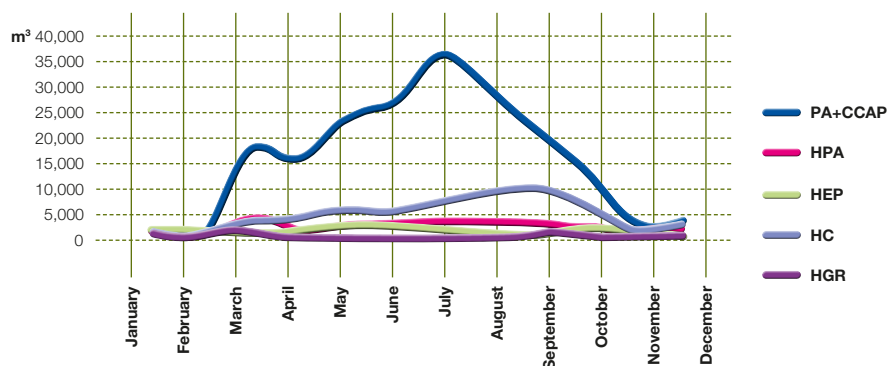
Water coming from the municipal water mains. It is used, fundamentally, in restaurants, toilets, for personal hygiene, cleaning, etc. Practically 100% becomes wastewater.

No significant changes were seen in our indicators of water for human consumption. Notably there was a substantial decrease for Hotel PortAventura and Hotel El Paso due to the repair of hidden leaks in 2013, such as the one rectified in the parterre of the south wing of Hotel PortAventura. Significant savings can also be seen in Hotel Gold River compared to 2012, due to the repair of a water leak in the Hotel Gold River bungalows, repaired in February 2013.

The PortAventura/ Costa Caribe Aquatic Park indicator increases in relation to the previous year due to the expansion of the water park facilities and opening calendar. Regarding water management, we emphasise that this indicator is strongly influenced by the correct behaviour of our guests. To this regard, our clients are large consumers of water.

Water for recreation and bathing

Water for recreation and bathing 2013





Water for recreation and bathing per visitor-overnight stay and year

	2010	2011	2012	2013
Port Aventura Park	0.0469	0.0334	0.0458	0.0385
Costa Caribe Aquatic Park	0.2185	0.2411	0.2208	0.1927
Hotel PortAventura	0.1567	0.1853	0.1269	0.1039
Hotel El Paso	0.1337	0.1392	0.1137	0.0793
Hotel Caribe	0.2786	0.4739	0.3056	0.2618
Hotel Gold River	0.1327	0.0335	0.0554	0.0361

Data rounded to 4 decimal places. This category of water does not apply to the Convention Centre.

In our system we have differentiated the records for consumption of water for recreation and bathing. This type of water is of identical origin to the water for human consumption; although this one comes from within a closed circuit, maintained via filtering and treatment, and only a small percentage is poured away as wastewater after the filter wash.

Very similar and significant behaviour is observed in virtually all businesses. In all cases there has been a reduction in consumption indicators for recreational water and water bathing, both compared to the previous period (2012) and compared to the average for the last three years. This has been thanks to the daily monitoring of the consumption of all the effects of water in the attractions and pools, directly related to task T11, EOB 143 *Daily checks using water meters*. As a result, we were able to detect incidents with immediate corrective action (small leaks, stopcocks not properly turned off, improper scheduling, plugging overflows, etc.).

Regenerated water for irrigation

This type of water consists of purified wastewater that has undergone an additional or supplementary treatment process, allowing the quality to be adjusted so that it may be used for certain purposes, in this case irrigation.

The regenerated water used in PortAventura comes from tertiary treatment at the Wastewater Treatment Plant in Vila-seca (Salou) and, since 1996 has, been used exclusively to water vegetation.

The use of this type of water is completely conditioned by the weather and for this reason PortAventura has its own meteorological station capable of registering significant parameters such as rainfall per square metre, wind, humidity, solar radiation and temperature.

Using these parameters it is possible to calculate the reference evapotranspiration

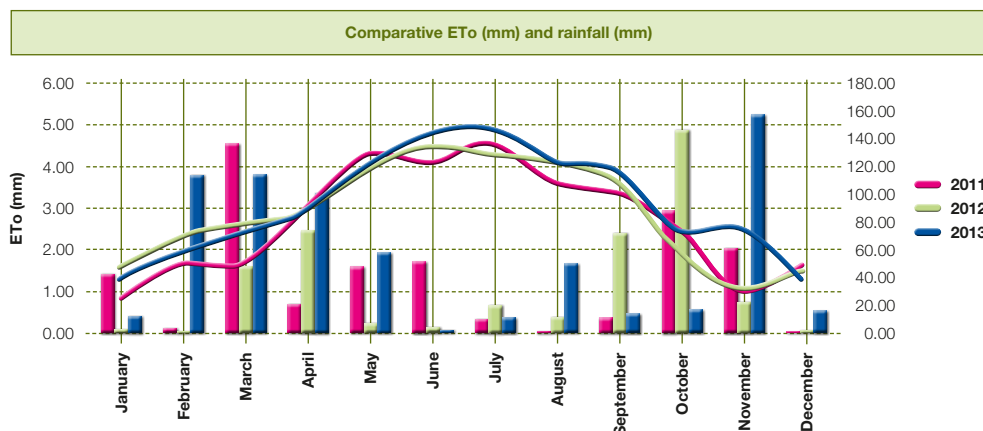
CONTINUED ON NEXT PAGE ►►



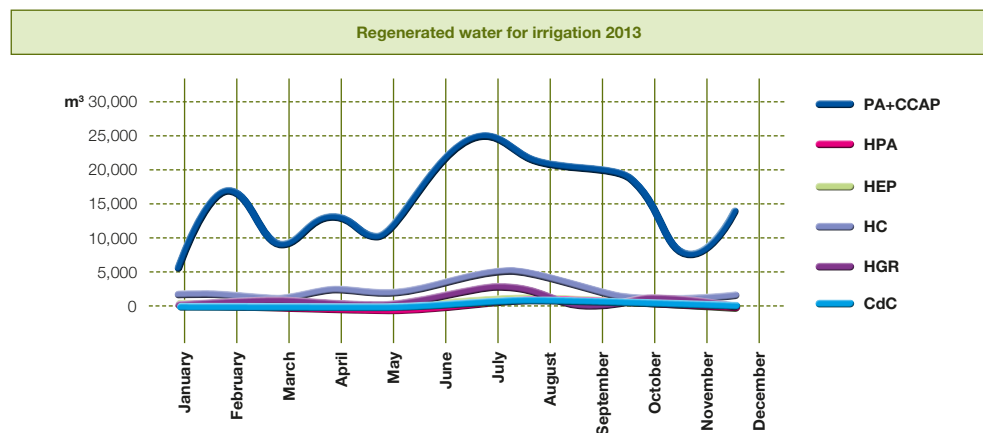
03.

EVALUATION OF ENVIRONMENTAL BEHAVIOUR

(ETo), which when entered into a specific irrigation computer program, allows us to check the exact amount of water in each of our parterres.



Due to a bug in the computer system software, it has not been possible to carry out the provision of water for irrigation through this system in the last quarter of the year.



Regenerated water for irrigation in m³ per m² landscaped area

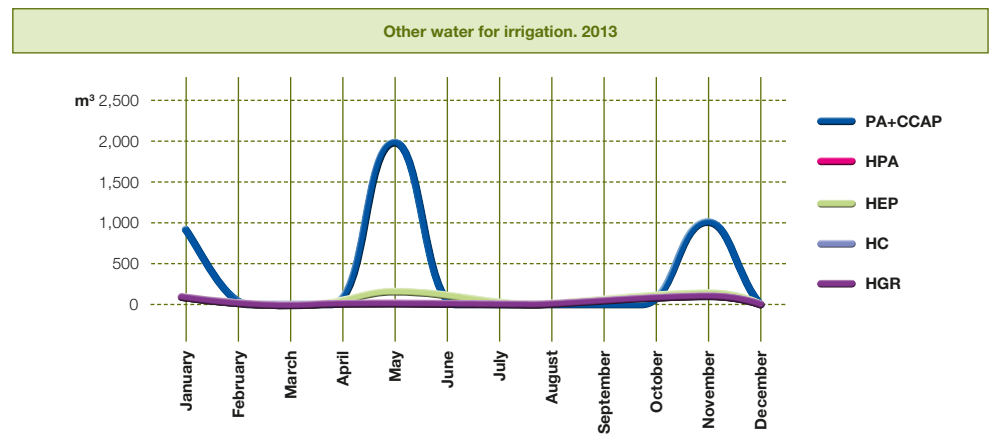
	2010	2011	2012	2013
PortAventura/Costa Caribe Aquatic Park	0.4753	0.5088	0.4150	0.3897
Hotel PortAventura	0.4110	0.5313	0.3904	0.5045
Hotel El Paso	1.1951	0.9715	0.7057	0.7867
Hotel Caribe	0.8276	0.9541	1.1291	0.8726
Hotel Gold River	0.6121	0.4370	0.2674	0.2621
Convention Centre	-	-	0.7541	0.1019

Data rounded to 4 decimal places.



The indicators show decreased consumption, except in Hotel PortAventura. Increased consumption in this hotel is due to numerous lawn reseeding activities that have been carried out and require a large consumption of water.

The significant decrease in the water consumption indicator for the Convention Centre is due to the settlement of new vegetation, which decreases its water needs. However, the only indicators available are from 2012. During the next few years we will have more background information for a detailed analysis of this indicator.



Other water for irrigation in m³ per m² landscaped area

	2010	2011	2012	2013
PortAventura/Costa Caribe Aquatic Park	0.0066	0.0008	0.0131	0.0085
Hotel PortAventura	0.0058	0.0006	0.0146	0.0078
Hotel El Paso	0.0177	0.0005	0.0233	0.0129
Hotel Gold River	0.0083	0.0002	0.0102	0.0025

Data rounded to 4 decimal places. This category of water does not apply to Hotel Caribe and the Convention Centre.

On occasions the water coming from the WWTP is not suitable for watering parks and gardens, either due to microbiological contamination or salt concentration levels. In these situations, when the water cannot be used for irrigation, alternative sources must be found in order to guarantee survival of the plant species.

This consumption, and therefore the corresponding indications, are totally conditioned by the quality of the water sent by Vila-seca WWTP.

03.

EVALUATION OF ENVIRONMENTAL BEHAVIOUR



Wastewater

All wastewater generated in the resort is conducted via a network of drains to the Wastewater Treatment Plant (WWTP) at Vila-seca (Salou) where it undergoes tertiary treatment in order to regenerate the water so that it can be used for irrigation within the resort and even for some of Vila-seca's municipal parks and gardens.

Internal quality control checks are carried out every three months on the wastewaters in the 2 sewers: Vila-seca and General (Salou). These provide us with a series of data that we can use to make any necessary improvements. The test results are sent to the ACA (*Agència Catalana de l'Aigua*, Catalan Water Authorities), in accordance with the operational guidelines established by the Departament de Territori i Sostenibilitat of the Generalitat de Catalunya.

Below are the average values coming from the internal control analyses. Indications of the maximum limits for wastewaters are set by Generalitat de Catalunya Decree 130/2003.

	VILA-SECA SEWER			
	2010	2011	2012	2013
Suspended Matter (mg/l)	174.0	144.0	286.8	348.5
Inhibitory Matter (Equitox/m3)	3.0	6.4	6.7	7.6
COD (not decanted) (mg O ₂ /l)	362.3	808.0	478.5	685.8
COD (decanted 2h) (COD) (mg O ₂ /l)	266.8	714.3	287.5	343.5
Conductivity at 25 C (µs/cm)	2,228.0	2,409.3	2,430.0	2,371.3
pH at 25 C (u)	8.1	8.0	8.0	8.2
Chlorides (mg/l)	250.3	314.9	461.2	249.9
Kjeldahl Nitrogen (mg/l)	105.3	86.2	105.9	89.5
Total Phosphorus (mg/l)	7.5	9.0	12.0	10.5
Ammonium (mg/l)	120.5	81.6	66.9	42.1
Oils and fats (mg/l)	14.7	9.9	9.6	4.8

Data rounded to 1 decimal place.

	GENERAL SEWER			
	2010	2011	2012	2013
Suspended Matter (mg/l)	82.8	176.5	287.0	249.3
Inhibitory Matter (Equitox/m3)	3.0	6.5	10.6	6.4
COD (not decanted) (mg O ₂ /l)	255.0	279.5	788.5	588.5
COD (decanted 2h) (COD) (mg O ₂ /l)	194.5	173.5	434.0	267.5
Conductivity at 25 C (µs/cm)	1,724.5	1,950.5	2,308.0	1,873.5
pH at 25 C (u)	7.9	7.8	7.4	8.0
Chlorides (mg/l)	229.8	309.7	321.6	217.8
Kjeldahl Nitrogen (mg/l)	50.8	32.0	89.7	80.7
Total Phosphorus (mg/l)	5.6	6.6	8.5	8.5
Ammonium (mg/l)	54.8	25.2	54.0	48.0
Oils and fats (mg/l)	10.0	9.1	20.2	9.2

Data rounded to 1 decimal place.

3.3 ENERGY MANAGEMENT

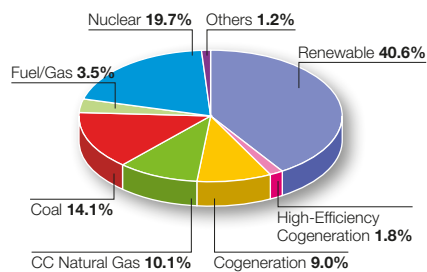
Electricity

PortAventura is equipped with an energy management system that is controlled by a main computer. This computer centralises programmable automations (PLCs) responsible for the control of the principle energy consumers distributed throughout the park's facilities.

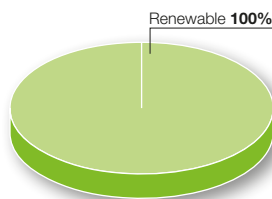
The hotels are equipped with energy-saving devices that allow us to mitigate our carbon footprint. Some of the resources that we use are: energy-saving bulbs, control of electricity consuming devices via a computer system, a connection key for electricity in the bedrooms, switch-off of the air conditioning when the window is opened, etc.

Origin of electricity

Spanish electricity network mixed production 2013



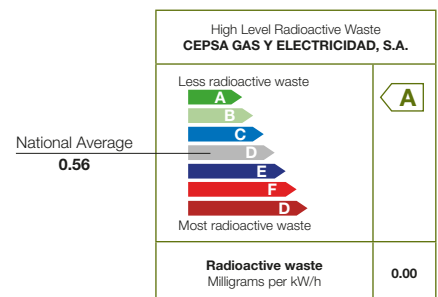
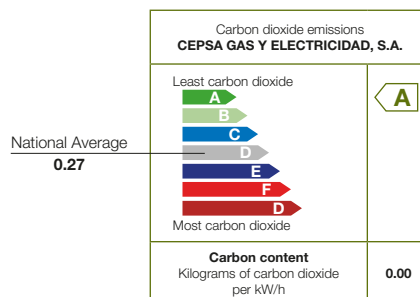
Mixed Production CEPSA Gas y Electricidad S.A.



Origin	Energy Supplier CEPSA GAS Y ELECTRICIDAD, S.A	Spanish Electricity Network mixed production
Renewable	100%	40.6%
High-Efficiency Cogeneration	0%	1.8%
Cogeneration	0%	9.0%
CC Natural Gas	0%	10.1%
Coal	0%	14.1%
Fuel/Gas	0%	3.5%
Nuclear	0%	19.7%
Others	0%	1.2%

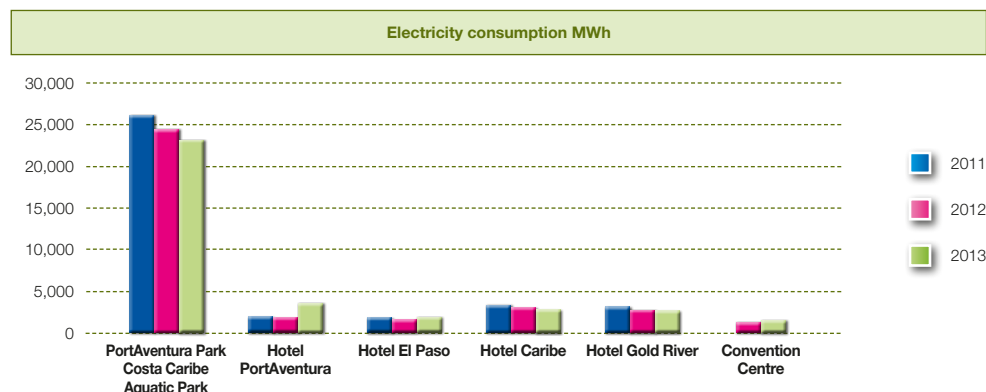
Environmental Impact

The environmental impact of electricity depends on the energy sources used for generation. On a scale of A to G, where A indicates minimum environmental impact and G the maximum, and the national average value is D, the energy supplied by CEPSA Gas y Electricidad SA has the following values:



03.

EVALUATION OF ENVIRONMENTAL BEHAVIOUR



Electricity in MWh per visitor-overnight stay

	2010	2011	2012	2013
PortAventura/Costa Caribe Aquatic Park	0.0082	0.0070	0.0066	0.0063
Hotel PortAventura	0.0076	0.0078	0.0064	0.0117
Hotel El Paso	0.0133	0.0122	0.0110	0.0121
Hotel Caribe	0.0173	0.0165	0.0146	0.0140
Hotel Gold River	0.0179	0.0151	0.0139	0.0134
Convention Centre	-	-	0.0438	0.0384

Data rounded to 4 decimal places.

Due to energy efficiency measures undertaken in PortAventura and agreed with the various operational areas of the company, during the whole year we saw a significant decrease of the indicators in all businesses except in Hotel PortAventura and Hotel El Paso.

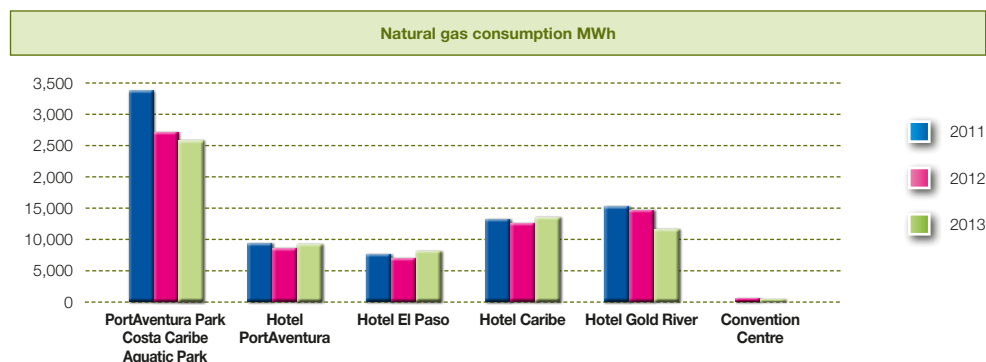
The Hotel PortAventura indicator shows an increase due to the detection of an error in the configuration of the meter, charging electricity consumption of this site to the parks.

The total energy consumption of the Hotel PortAventura and Parks indicators stated in previous versions is correct and therefore it is not necessary to change the information relating to previous years, recording the finding in our Environmental Management System.

The increase shown on the Hotel El Paso indicator is attributed to an increase, compared to previous years, in the opening days during the month in October, with intermittent operations.



Natural gas



Natural gas in MWh per visitor-overnight stay

	2010	2011	2012	2013
PortAventura/Costa Caribe Aquatic Park	0.0011	0.0009	0.0007	0.0007
Hotel PortAventura	0.0036	0.0033	0.0028	0.0028
Hotel El Paso	0.0039	0.0047	0.0043	0.0048
Hotel Caribe	0.0065	0.0062	0.0057	0.0062
Hotel Gold River	0.0092	0.0070	0.0069	0.0054
Convention Centre	-	-	0.0016	0.0005

Data rounded to 4 decimal places.

In our facilities this type of energy is used mainly to produce hot water for personal hygiene and for use in the kitchens.

A significant decrease in the natural gas consumption indicator is observed at all sites except Hotel El Paso and Hotel Caribe. This is attributed to several factors: possibly the most significant aspect has been the high minimum temperatures for the months of September and October, which have favoured a significant saving in the boilers. There has also been daily monitoring of consumption that has made it possible to detect incidents and implement corrective measures with immediate effect.

The Hotel El Paso has been open for a greater number of weeks, compared to 2012, with intermittent operations, which has generated an increase in the indicator in relation to the average over the last three years. The increase in the Hotel Caribe indicator is attributable to the decrease in overnight stays in October and November in this hotel in relation to the previous year. In this way the minimum comfort levels are retained.

Other energies

	2010	2011	2012	2013
Fuels	3,303 (MWh)	2,793 (MWh)	2,595 (MWh)	1,156 (MWh)
Propane gas	178 (MWh)	178 (MWh)	148 (MWh)	212 (MWh)

The indicator for this type of consumption per number of visitors is not representative due to the high number of visitors to the resort.

03.

EVALUATION OF ENVIRONMENTAL BEHAVIOUR



3.4 AIR EMISSIONS AND NOISE

Taking into consideration all of PortAventura's activities, air emissions are irrelevant and environmental impact is very low. However special attention is paid to the control of this aspect.

The emission points are:

- ▶ Diesel steam train locomotives (two locomotives)
- ▶ Natural gas-powered central heating and/or hot water boilers
- ▶ Carpentry and painting
- ▶ Motor vehicles
- ▶ Combustion of natural gas in the attractions Templo del Fuego and FiestAventura

For the first three, measurements are taken of the emission of pollutants into the atmosphere every three years and the corresponding results are within legal limits.

The final two are considered to be diffuse emissions and are managed by controlling consumption.

In regard to noise pollution, noise measurements have been taken from the boundaries with the closest neighbours.

Since 2008 PortAventura has been working on calculating the carbon footprint from its activities, estimating the emissions of greenhouse gases expressed as tonnes of CO₂. Calculations are based on the March 2013 version of the "*Guia pràctica per al càlcul d'emissions de gasos amb efecte hivernacle (GEH)*" (Practical guide to calculating the emission of greenhouse gases (GHG)).

	2010	2011	2012	2013
Total annual greenhouse gas emissions expressed as equivalent tonnes of CO ₂	16,908	12,281	11,704	12,700
*Annual greenhouse gas emissions expressed as equivalent tonnes of CO ₂ per client and year	0.004210	0.002672	0.002525	0.002732

*Data rounded to 6 decimal places

3.5 BIODIVERSITY

m² constructed:

PortAventura Park	262,107.60
Costa Caribe Aquatic Park	5,832.36
Hotel PortAventura	33,839.91
Hotel El Paso	26,827.69
Hotel Caribe	30,708.47
Hotel Gold River	32,521.97
Convention Centre	13,588.61

Data rounded to 2 decimal places



3.6 EFFICIENT CONSUMPTION OF MATERIALS

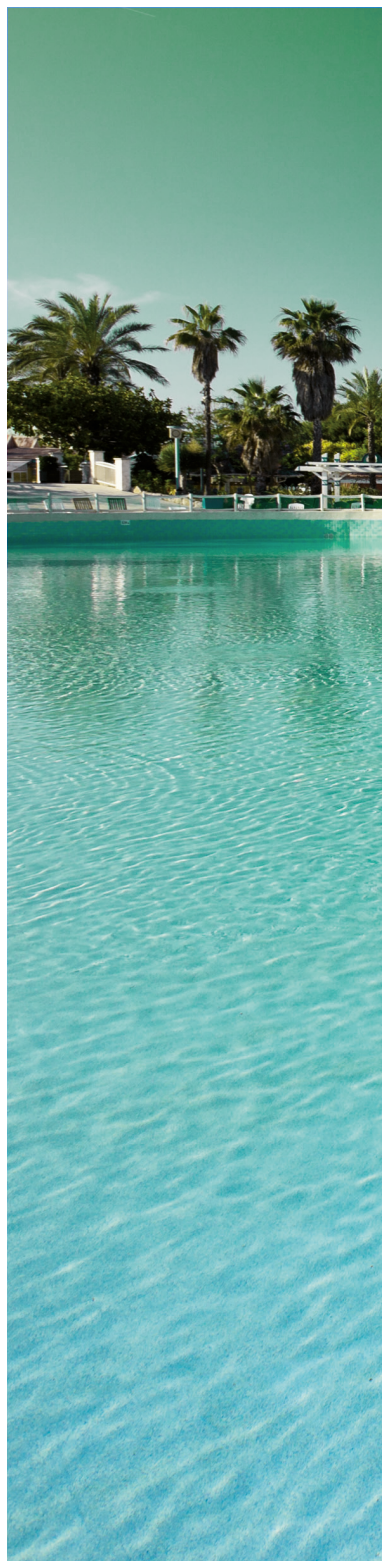
Materials	Environmental Aspect	2010	2011	2012	2013
Chemical products for swimming pool and lake maintenance	Consumption of drinking water	499.82 t	598.54 t	518.95 t	510.49 t
Lighting	Luminous emissions in the atmosphere	23,647 Units	21,207 Units	15,794 Units	17,277 Units

The indicator for these materials per number of visitors is not representative due to the high number of visitors to the resort.



04.

ENVIRONMENTAL LEGISLATION



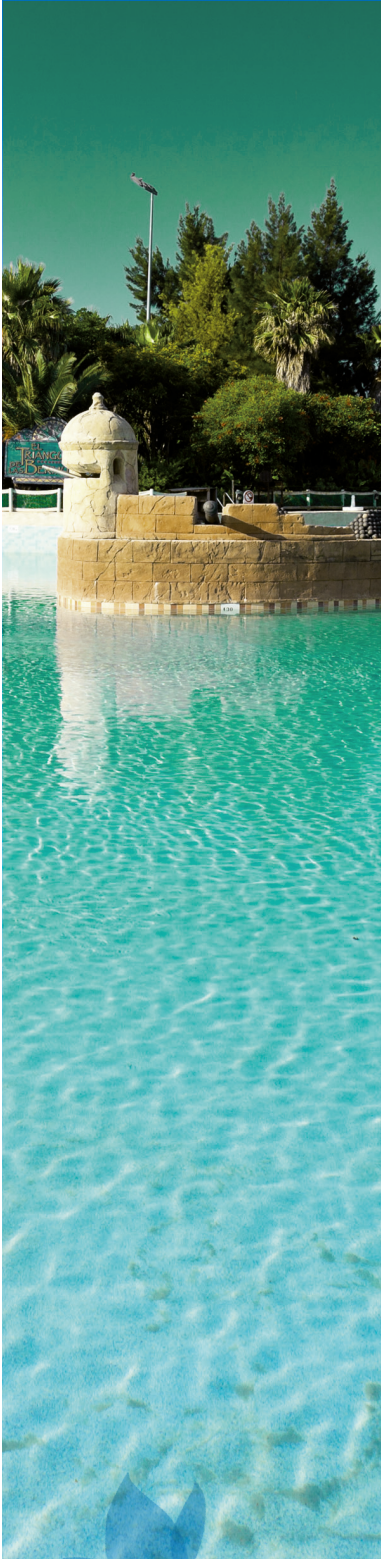
PortAventura has contracted the services of an external specialist company for the identification and evaluation of compliance with applicable legislation and other requisites that it has voluntarily subscribed to.

Computerised tools are used to identify the legislation applicable to the organisation on matters of the environment and industrial safety on an international, European, national, regional and local scale, as well as all other requirements.

A group of experts carries out an annual review to verify legal compliance, in order to guarantee that the company is operating under the terms established by law.

The following table shows some of the legal requisites that must be strictly observed by the company:

LEGAL PROVISION	LEGAL REQUISITES
Order of 2nd February 1990, which regulates the administrative implementation process for the application of high voltage electrotechnics regulations.	Legalises high voltage installations and provides for the relevant inspections.
Royal Legislative Decree 1/2001, of 20th July, which approves the Consolidated Water Act.	Governs registration for exploitation of water, with the corresponding Water Permit, granting permission to use purified water for irrigation of certain parks within the municipal districts of Vila-seca and Salou.
Decree 130/2003, of 13th May, which approves Public Sanitation Service Regulations.	Deals with 2013 environmental authorisation, including permits for the disposal of wastewater.
Law 20/2009, of 4th December, on environmental prevention and control of activities.	In 2012, the review of the environmental license was pending. This review was conducted under the new system for environmental authorisation. On 31 st July 2013 PortAventura was granted the environmental authorisation renewal.
Decree 176/2009, of 10th November, which approves Regulation of Law 16/2002, of 28th June, on protection against sound pollution and brings in line its annexes.	In 2012 noise measurements were taken from the boundaries with the closest neighbours.
LAW 3/2010, of 18th February, fire prevention and safety in establishments, businesses, infrastructures and buildings.	Ensures compliance with anti-fire regulations following any changes to PortAventura facilities.
Decree 82/2010, of 29th June, which approves the catalogue of activities and centres obliged to adopt self-protection measures and establishes the content of these measures.	Updates the self-protection plan and implementation and carrying out of drills. Approved by Civil Protection on 8 th October 2013.
Law 22/2011 of 28th July, on contaminated soils and wastes.	Provides for management of waste by promoting measures to prevent generation of it and to mitigate adverse impacts on human health and on the environment associated with generation and handling, prioritising waste-to-energy management.
Resolution TES/3100/2011, of 22nd December, establishing environmental criteria for awarding hotel operators the Environmental Management Standard.	The renewal of the quality standards for the hotels, in 2013, was carried out in accordance with the updated resolution. The Environmental Management Standards were awarded to the four hotels.
Royal Decree 235/2013 of 5th April approves the basic procedure for the certification of the energy efficiency of buildings.	So far, only applies to new buildings: Hotel Gold River and Chikitienda, playground... For other buildings is not applicable now.
Royal Decree 238/2013, of 5th April, amending certain articles and technical instructions of the Regulation of Thermal Installations in Buildings, approved by Royal Decree 1027/2007 of 20th July.	Perform inspection in thermal installation for heating and hot water systems for P> 20 kW and P <70Kw. Perform inspection in thermal systems with heat generator for P> 70kW using non-renewable fuels (excluding gaseous fuels). Inspection of the energy efficiency of air conditioners with power equal to or greater than 12 kW.



LEGAL PROVISION	LEGAL REQUISITES
ADR 2013: Amendments proposed by Portugal to Annexes A and B, amended, of the European Agreement concerning the International Carriage of Dangerous Goods by Road (ADR), done in Geneva on 30th September 1957, approved by the Working Group for Transportation of Dangerous Goods of the Economic Commission for Europe during the 88th, 89th, 91st and 92nd sessions.	Technical conditions to be met as of 1st January 2013 in the case of some activities of transport of dangerous goods.
Technical instruction for arrangement of emission sources to perform emission measurements (IT AT 2).	Arrangement of the emission sources to comply with this instruction. Control of emission sources is performed, although there is no legal obligation to perform this control. This adjustment has been made for the renewal of the environmental authorisation.
LAW 2/2014, of 27th January, on fiscal, administrative, financial and public sector measures.	The deadline of 31/12/13 to adapt existing outdoor lighting is hereby repealed. We are awaiting the development of new regulations that will set a new deadline for compliance and possible further specifications.



05.

SIGNATURES



Environmental Declaration updated in accordance with the requirements established in annex IV (EC) Regulation No. 1221/2009 OF THE EUROPEAN PARLIAMENT AND OF THE COUNCIL, 25th November 2009, on the voluntary participation by organisations in a Community eco-management and audit scheme (EMAS), and which repeals (EC) Regulation no. 761/2001 and Decisions 2001/681/EC and 2006/193/EC of the Commission.

This document has been prepared and approved by Port Aventura Entertainment, S.A Unipersonal:

Dr Sergio Feder
President of
the Executive Committee

Mr Fernando Aldecoa
Managing Director

Organisation responsible for system verification and declaration validation:

Nuria
Massot
Adell

Digitally signed by Nuria Massot Adell
DN: cn=Nuria Massot Adell,
sn=Massot Adell, givenName=Nuria,
c=ES, o=TRI ICT, S.A.,
ou=Dirección Técnica BS S,
title=Dirección Técnica BS S,
email=Nuria.Massot@es.tuv.com,
serialNumber=39701026J
Date: 2014.06.19 18:10:52 +02'00'

Ms Núria Massot
TÜV Rheinland Ibérica,
Inspection, Certification and Testing, S.A.
Organisation no. ES-V-0010





EUROPEAN DESTINATION RESORT

WWW.PORTAVENTURA.COM

AV. ALCALDE PERE MOLAS, KM 2 . 43480 VILA-SECA
TEL. 977 77 90 00 . FAX 977 77 91 11