
Welcome

Welcome to the Safety Induction Parami Energy

Maximum involvement from each employee is required in this Induction as well as this in house safety process

**You MUST Participate in Order
For You and The Project to Succeed!!!**

Main Targets

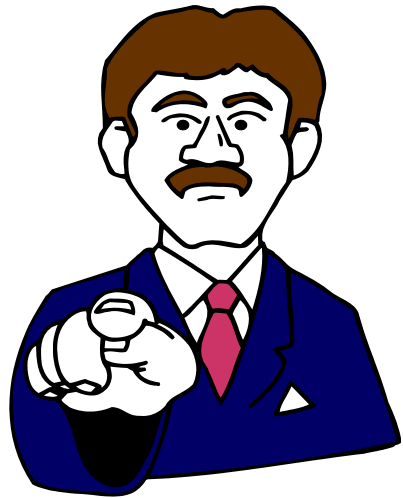
OUR PURPOSE In This Orientation Is To Make Sure That You Return To Your Families Safely By Understanding And Then Following The Rules

YOUR PURPOSE Is To Follow the Rules And Work Safely

What is Safety ?

- The word safety refers to your freedom from danger, injury and damage, and to your personal security. The word safety has been used so often that many of you may think of it as a "Preaching Word", or a word that forces you to alter your ways or change bad habits.
- Primary Duty
 - People (Protect people from death and injuries)
 - Property (Prevent properties damages)
 - Environment (Protect environment)

Notice : not only help reduce workplace hazard ,we need to help reduce costs of organization



Safety is everyone's
responsibility
and
accountability!
!

STOP Work Principle

ALL employees have the right and are expected to STOP WORK if they believe that the work is unsafe due to conditions or direction from their supervisor.

No employee will be dismissed for asking questions or wanting to make sure the project works safely.



Employee Conduct Rules

- ▣ Follow in house Company Rules
- ▣ Follow and obey all Project Safety Rules outlined in this orientation
- ▣ Follow all Camp or Accommodation rules
- ▣ Do not engage in horseplay, fighting, gambling or drug abuse
- ▣ Always maintain good relationship among other employees

Employee Conduct Rules (Cont.)

- ▣ Do not misuse equipment
- ▣ Do not tamper with any electrical equipment
- ▣ Smoke in designated area only
- ▣ Do not engage in any obvious unsafe act or at risk behavior
- ▣ Maintain discipline and demonstrate good work ethics at worksite

Supervisor's Responsibilities

- Supervisor shall conduct daily tool box talks
- Supervisors shall not instruct their workers to perform any work in an unsafe manner
- Shall review Risk Assessment and Method Statement and submit to PTTEP and proceed with Permit to Work.
- There is zero tolerance for non-compliance of any work activities within Supervisor's control

Disciplinary Program

The following list represents infractions of Company and project rules and regulations that are of such a serious nature that non-compliance would result in the immediate removal from the physical site in of the employee and direct supervision depending on knowledge of event.

- Use / Influence and / or Possession of illegal drugs, alcohol or controlled substances on the Construction site
- Use and / or possession of firearms, weapons or explosives on the Construction site
- Fighting on the Construction site
- Violation of the construction work permitting procedures including but not limited to:
 - Improper use of machinery or equipment which results in an injury or serious near miss incident
 - Deliberate disregard for any company policy or procedure

Emergency

- ▣ Emergency contact number is
- ▣ Shutdown all electrical equipment and appliances
- ▣ Know your designated assembly point and move to location when directed - do not panic or run
- ▣ Wait for all clear information and further instructions from your Supervisor



Emergency Reporting

Stay Cool, Calm and Collective!!!

Make sure you provide clear information in the following sequence:

- Your Name and Company (당신의 성명과 회사)
- Exact Location, e.g.
- Type and Nature of Emergency, e.g., fire, injury, etc.
- Number of casualties if there are any
- What kind of assistance or rescue equipment required



Fire and Firefighting

- ▣ Raise an alarm
- ▣ Inform others in the vicinity
- ▣ Check for routes to escape
- ▣ Do not risk trying to extinguish the fire if you feel that your life would be in danger
- ▣ Leave the dangerous area and proceed to your assembly point
- ▣ Stay at assembly point until you receive further instructions from your Supervisor



Medical

- ▣ Report all injuries to the Clinic and your Supervisor
- ▣ Know location and contacts of medical clinic:



What are the four categories of hazard in work place ?



Material



Equipment



Environment



Employees

Identify Hazard

Four important Processes to identify hazard

1. Walk around Inspection
2. Informal and formal Observation
3. The job Hazard Analysis (JHA)
4. Incident /Accident Analysis



Controlling the Hazard you identify



1. Engineering Controls

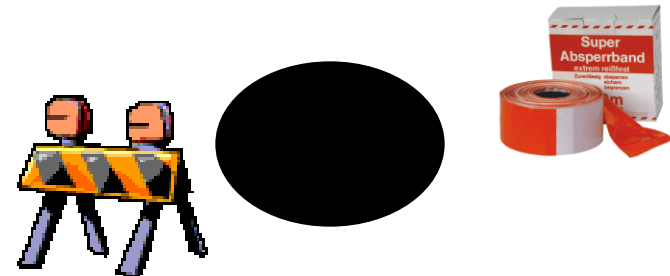


2. Management Control



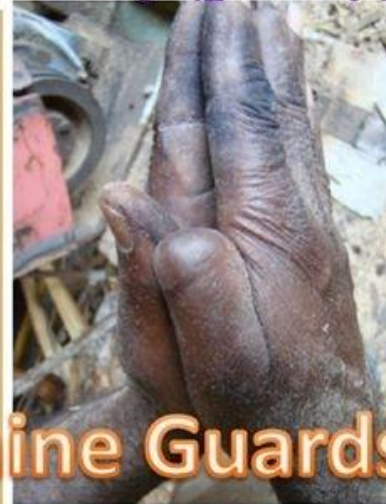
3. Personal Protective Equipment

1. Interim Measures



Machine Guards

မွေးရာပါ လက်ချောင်းလေးများ မဆုံးရှုံးစေရန်



Never Remove Machine Guards

စက်ပစ္စည်း အကာအယံ များကိုမဖယ်ရှားပါနှင့်။

Incident/ Accident / Near Miss Reporting

Report to your Supervisors all work related incidents, accidents and near-misses immediately

- Supervisors will investigate all incidents
- All incident reports **MUST** be reported within 24 hours
- Major incidents shall be notified **IMMEDIATELY**
(verbally is acceptable) to HHI



Reporting Unsafe Acts & Conditions

Unsafe Acts, i.e.

- Not using PPE
- Crossing Barriers
- Not Complying to permit requirements
- Climbing “Red Tag” scaffold
- Horseplay

Unsafe Conditions, i.e.

- Open Manholes
- Non barricaded deep excavations
- Slippery Walkways
- Loose gratings
- Unsafe scaffolding
- Poor lighting

Unsafe Acts and/ or Conditions may result in personal injuries or even death of co-workers.

REPORT THEM TO YOUR SUPERVISOR AND HSE REPRESENTATIVE!!!

Examples of Unsafe Acts & Conditions

Unsafe Acts



Unsafe Conditions



Health & Hygiene

- All employees are expected to report any areas where they believe that their Health or Hygiene could be improved.
- All employees shall have clean potable water
- Food services shall be monitored for cleanliness and compliance to standards
- Employees shall report to the medical clinic the following situations:
- Any personal medical condition that would be contagious to others

Environment

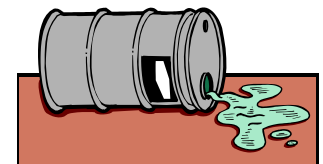
- All employees will comply with basic environmental policies for the project
- The following shall apply:
 - Use waste containers for construction / personal waste
 - No oil or hydrocarbons shall be put into any water area
 - All employees will participate in housekeeping efforts

This Is Our Home – Keep It Clean !!!



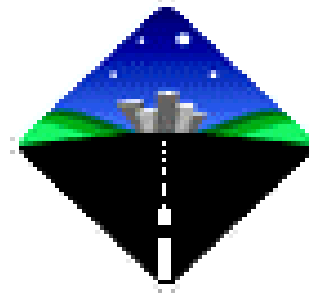
Waste Management

- The throwing of trash on the ground is not permitted
- All personnel will participate in housekeeping
- Marked containers shall be placed on site for waste Containers will be labeled for their trash
- Waste will not be allowed to accumulate
- All employees are expected to comply with cleaning their work area daily



Traffic

- Posted Speed Limit within the project site is
- The use of seat belts by all personnel including front–back seat passengers is mandatory
- Riding in the back of a pick-up truck is prohibited unless the vehicle is constructed by carry passengers
- All traffic signs shall be fully obeyed



Minimum Personal Protective Equipment (PPE)

Safety hard hat



Safety Glasses



Safety Boots



Additional PPE as required

Hearing Protection

Protective Clothing



Respiratory Protection



Hand and skin Protection



WHAT
KIND OF
PPE DO I
NEED?

LET'S REVIEW PPE



Tool-Box Talks

- All employees shall attend tool-box talks
- Supervisor's to conduct tool box talk daily before work starts
- Work related hazards for that day and safety requirements to reduce any risk shall be discussed
- Supervisors / Foreman and employees shall actively participate
- Employees to sign attendance list



Barricades/Signs



Hard Barriers shall be installed for the following critical activities with scaffold tubes or suitable timbers and wrapped with tape streamers and required signs be posted:

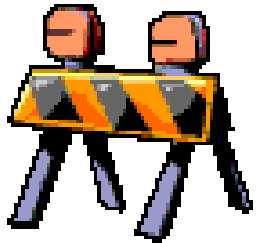
- Deep Excavation
- Platforms and open Floor Areas

Soft Barriers shall be used for the following areas:

- Lifting area (crane radius))
- Scaffolding erection and dismantling
- Blasting and Painting locations
- Hydro-testing locations



The above requirements are mandatory as warnings for employees



Barricades/Signs

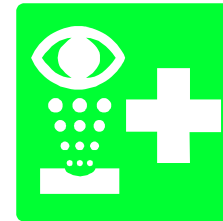
Warning (경고표시)

Background color shall be yellow with a triangular warning.



Safe conditions

Background colour shall be green with white symbol or text.



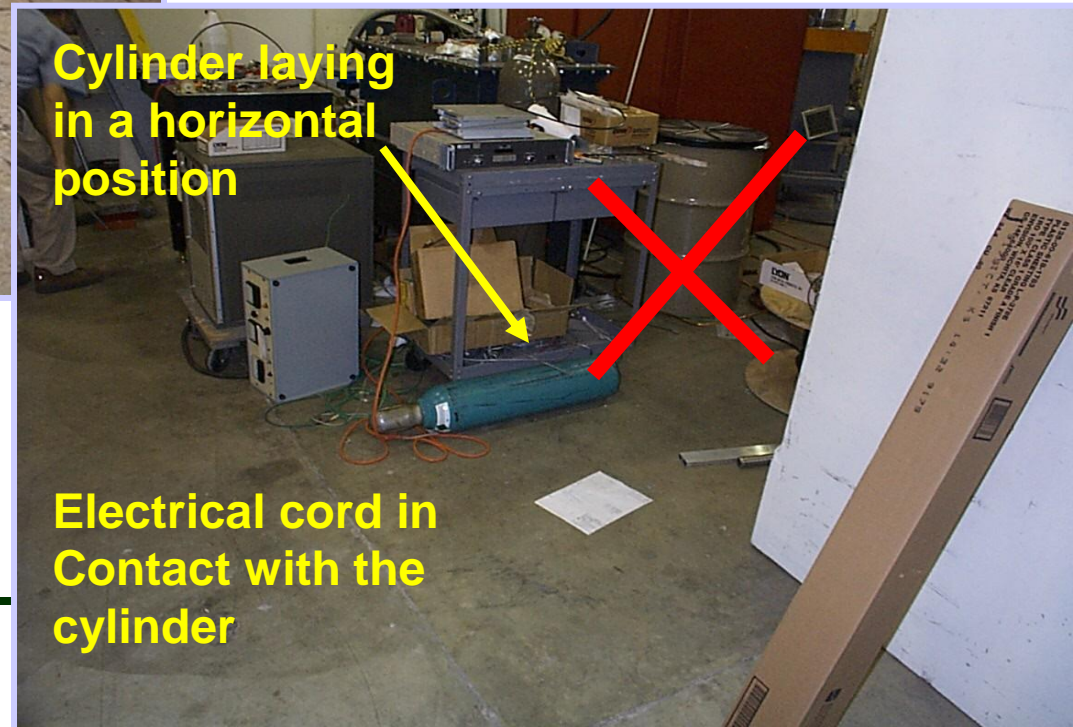
Fire

Background colour shall be red with white symbol or text.

The shape of the sign shall be square or oblong.



Compressed Gas Cylinder Safety



Compressed Gas Cylinder Safety

Compressed gas cylinders must be:

- Stored upright and secured
- Segregated and labeled content/full/empty
- Stored in proper ventilated area
- Stored under sun shade
- Fire fighting provisions must be provided
- Equipped with valve caps
- **Flash back arrestors must be fitted at the Gauges and the torch end**



Compressed Gas Cylinder Safety

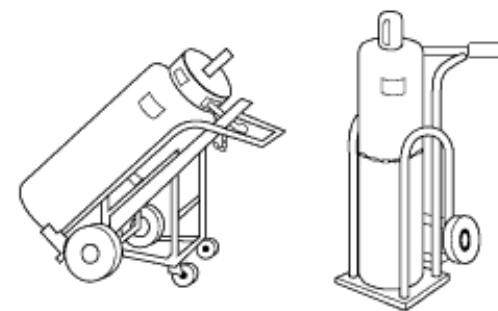
Compressed gas cylinders must be:

- Stored upright and Secured
- Segregated and Labeled content/full/empty
- Stored in proper ventilated area

Stored under sun shade

- Fire fighting provisions must be provided
- Equipped with valve caps

Flash back arrestors must be fitted at the Gauges and the torch end in accordance



Cylinder Trolleys

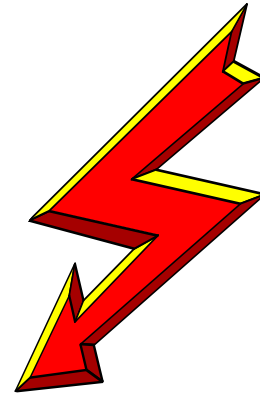


Electrical Safety

- All electrical equipment – cords shall be inspected before use
- All electrical equipment shall be color coded for the proper period of inspection
- **Do Not:**
 - Use damaged cords
 - Make a homemade electrical plug-in
- Allow electrical cords / cables to lay in water or where personnel walk or could hit the cord / cable
- **Do:**
 - Report all damaged equipment / cords / cables to your supervisor immediately and **DO NOT USE!!!**



Electrical Safety (Cont.)



OUT...

Ignition/Fire Control

- All hot work within the operational plant and any construction area deemed as a permit area requires a signed permit before hot work takes place
- When welding or burning any open flame look for sparks
- Where required use fire blankets
- A fire watch is required for all hot work activities
- Never touch a fire extinguisher unless you are going to use it
- Never pull a pin from a fire extinguisher and squeeze the trigger – the pin back does not keep the extinguisher from leaking
- Turn off all vehicles when re-fueling
- Only smoke in designated areas



Open Flame/Hot Work



Workers performing arc welding operations with the correct PPE



Ladder Safety



- No homemade ladders are allowed on the project
- Ladders shall be tied at the top to prevent falling or held by an employee at the bottom
- Only (1) person will work off a ladder at one time
- Step ladders shall be fully opened with hinges fully extended
- **Top step of step ladder shall not be used – Best practice is to leave the top 3-steps empty.)**
- A step ladder shall always be held at the bottom by an employee
- **AT NO TIME** will an employee use any ladder and not have both hands free for climbing – No carrying tools and climbing.)

ပိုက်ဆက်လုပ်သားတစ်ဦး လေးပေအမြင့်မှ ပြုတ်ကျသေဆုံး



သန်းဌေး



ရန်ကုန်၊ ဇူလိုင်-၁၃

ပိုက်ဆက်လုပ်သားတစ်ဦးသည် အဆောက်အအုံမျက်နှာကြက်တွင် ရေပိုက်တပ်ဆင်ရန် လှေကားဖြင့် တက်နေစဉ် အမြင့်လေးပေခန့်မှ ခြေချော်၍ နောက်ပြန်ပြုတ်ကျသောကြောင့် ဒဏ်ရာများရရှိကာ ဆေးရုံရောက်ချိန်တွင် သေဆုံးသွားကြောင်း သတင်းရရှိသည်။

ဇူလိုင် ၁၂ ရက် ညနေ ၄ နာရီခန့်တွင် မရမ်းကုန်းမြို့နယ်၊ အမှတ် ၁၀ ရပ်ကွက်၊ ပါရမီလမ်းရှိ ဆောက်လုပ်ဆဲ အိမ်အုံ၏ သုံးလွှာမျက်နှာကြက်တွင် ရေပိုက်တပ်ဆင်ရန် အမြင့် ရှစ်ပေခန့်ရှိ လှေကားဖြင့် တက်စဉ် လေးပေခန့်အရောက်၌ ခြေချော်၍ နောက်သို့ ပြုတ်ကျခဲ့ခြင်းဖြစ်သည်။

၎င်းသည် အောက်အခင်းကြမ်းပြင်နှင့် ဦးခေါင်းမျက်နှာတို့ ဆောင်မိသဖြင့် ဒဏ်ရာများရရှိကာ မြောက်ဥက္ကလာပဆေးရုံသို့ တင်ပို့ကုသစဉ် သေဆုံးသွားကြောင်း ရန်ကုန်တိုင်းဒေသကြီးရဲတပ်ဖွဲ့မှ ခင်းမှတ်တမ်းများတွင် ဖော်ပြထားသည်။

ထို့ကြောင့် သေဆုံးသူ၏ အလောင်းကို ဆေးရုံမှ ပီအာရ်၂၅ ဖြင့် လက်ခံထားပြီး မြောက်ဥက္ကလာပမြို့နယ်ရဲစခန်းက ဓမ္မတာအတိုင်း သေဆုံးခြင်းဟုတ်၊ မဟုတ် စစ်ဆေးလျက်ရှိသည်။

A Worker was killed after falling from a ladder leading to ceiling

LESSONS LEARNED

This occupational accident could have been prevented :

- ✓ if the worker had been previously trained in ladder safety
- ✓ if the worker had been provided appropriate personal protective equipment
- ✓ If a proper work platform or A- frame ladder had been provided



OSHE SERVICES

Your Trusted Advisor for Occupational, Safety, Health & Environmental Solutions

Scaffold Safety

All scaffold metal components shall be sound and free of penetrating rust, breaks, bends through inspection

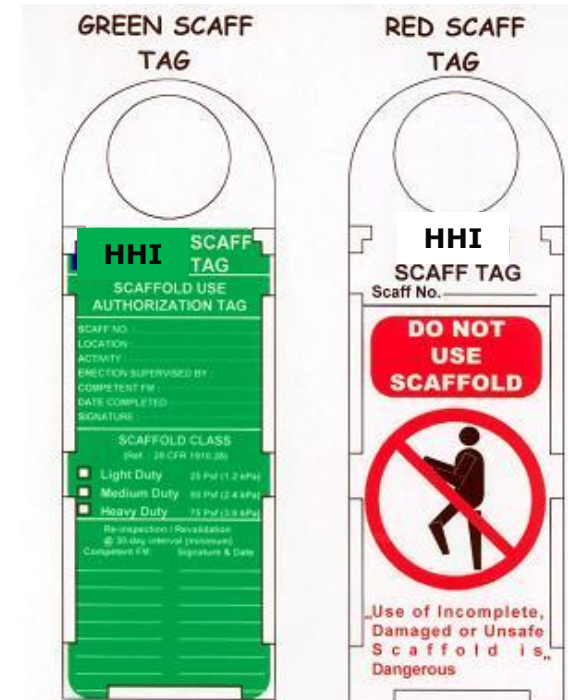
- ▣ Do not work on unguarded scaffold platforms
- ▣ Do not remove any components of scaffold structure



What is wrong with this scaffold?

Scaffold Safety

- ❑ DO NOT USE OR CLIMB scaffolding with **Red Tag**
- ❑ **Green Tag** will be displayed on completed and approved scaffolding
- ❑ Only qualified scaffolders will erect, dismantle or alter a scaffold.)



Scaffold Safety



Working at Height

- Working above **1.8 meters**
- requires full safety harness
- with double lanyard attached
-
- Fall protection is 100%
- mandatory, noncompliance
- is subject to instant
- dismissal from the Project



Working at Height

- Always tie off overhead,
- never below the waist
- **DO NOT TIE OFF** to electrical
- conduit, plastic piping or
- floor gratings



Working At Height

Fall Protection 100% Tie Off



THIS COULD BE YOU!





ငြမ်းစင်ကြားမှ အသက်ခန္ဓာများ

7 DAY NEWS

Vol.11, No.35 • NOVEMBER 8, 2012

၁၉ နှစ်အရွယ်မောင်ဝေဦးသည် နာဂစ်ဒဏ်သင့်ဒေသတစ်ခုဖြစ်သည့် ဧရာဝတီတိုင်း၊ ဧေးဒေသမြို့နယ်ရှိ ကျေးရွာလေးမှ ရန်ကုန်သို့ တက်လာကာ ကန်ထရိုက်တိုက်ဆောက်လုပ်ရေးလုပ်ငန်းခွင်တစ်ခုတွင် နေ့စားဝန်ထမ်းတစ်ဦးအဖြစ် လုပ်ကိုင်နေရာမှ ယခုကဲ့သို့ ထိတ်လန့်ဖွယ် အသက်ဆုံးရှုံးခဲ့ရခြင်းဖြစ်သည်။



အမြင့် ၁၂၇ ဒသမ ၅ ပေမှ ပြုတ်ကျခဲ့သည့် ကိုဝေဦးသည် သေဆုံးစဉ်တွင် ဘေးအန္တရာယ်

ကင်းရှင်းရေး အကာကွယ်ပစ္စည်း တစ်စုံတစ်ရာမျှ သုံးစွဲထားခြင်း မတွေ့ရကြောင်း လှိုင်မြို့နယ် ရဲစခန်းမှ စခန်းမှူးရဲဘော်သိန်း ဆွေမြင့်က ပြောသည်။ အချစ်ပို(D)သို့



တောင်ကြီးမြို့တွင် လုပ်ငန်းခွင်မတော်တဆမှုကြောင့် လူခုနစ်ဦးသေဆုံး

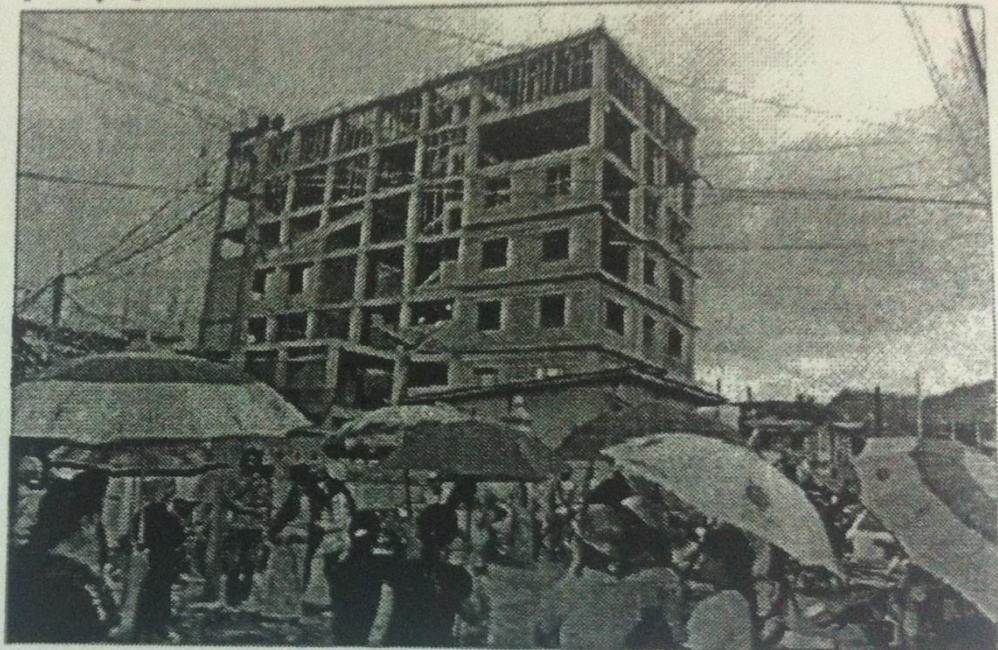
မင်းစာနည်

တောင်ကြီး

အောက်တိုဘာ - ၄

တောင်ကြီးမြို့ရှိ ဆောက်လုပ်ရေး လုပ်ငန်းခွင်တစ်ခုတွင် ဘီလပ်မြေ ဖျော်စက် အမြင့်သို့ ဆွဲတင်ရာမှ ယင်းစက် ပြုတ်ကျမှုကြောင့် လူ ခုနစ်ဦး သေဆုံးမှု ဖြစ်ပွားခဲ့ ကြောင်း သတင်းရရှိသည်။

ဖြစ်ပွားပုံမှာ ယခုလ ၃ ရက် က တောင်ကြီးမြို့ ပြည်တော်သာ ရပ်၊ အမှတ်(ပ/၂၃)ကြီး ခိုင်ဇေ လမ်းပေါ်ရှိ ဆောက်လုပ်ဆဲ အ ဆောက်အအုံပေါ်သို့ ဘီလပ်မြေ ဖွဲ့စက် အပေါ် ဆုံးထပ်သို့ ဆွဲတင် ရာမှ ကြိုးပြတ်ကျပြီး ငြင်းစင်ပေါ် သို့ပြုတ်ကျခဲ့ရာ လူခြောက်ဦးသေ ဆုံးခဲ့ပြီး ကျန်တစ်ဦးမှာ ဆေးရုံ တွင် ထပ်မံသေဆုံးသွားကြောင်း သိရသည်။



တောင်ကြီးမြို့တွင် အောက်တိုဘာမြန်မာ့ရာ အဆောက်အအုံ

စာသိပ္ပံ-မင်းစာနည်

အဆိုပါဖြစ်ရပ်ကြောင့် လုပ်ငန်းခွင်အတွင်းမှ လုပ်သားအများစုအပြား ဒဏ်ရာရရှိခဲ့ပြီး ၎င်းတို့ အား တောင်ကြီး မြို့ စစ်ဆေးရေးဆေးရုံ၌ ဆက်လက်ကုသလျက်ရှိကြောင်း စုံစမ်းသိရှိရသည်။

Lifting and Rigging

Inspect and tag all rigging and lifting gears

Do not use Home-made - Damaged – Spliced slings or other rigging materials and accessories

Unsafe rigging gear will be immediately removed from site

All chains, com-a-longs, shackles shall be inspected and approved

Tag lines of 3-meters shall be used for all lifts regardless of their weight

All Lifting activities shall be stopped in the following circumstances:

- Heavy rain, snow or storm
- Strong winds
- Lightning
- Poor visibility



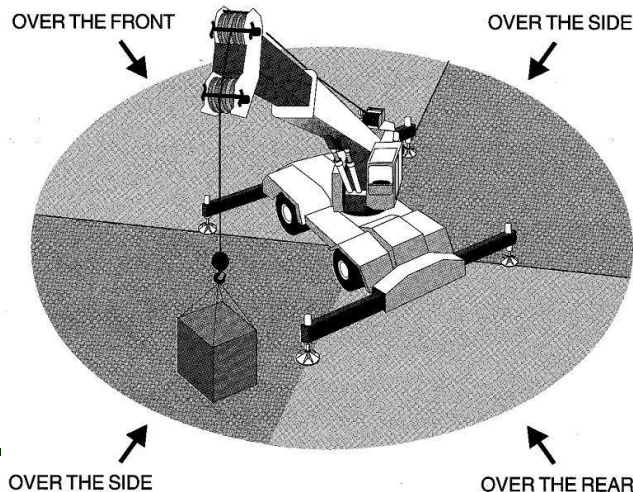
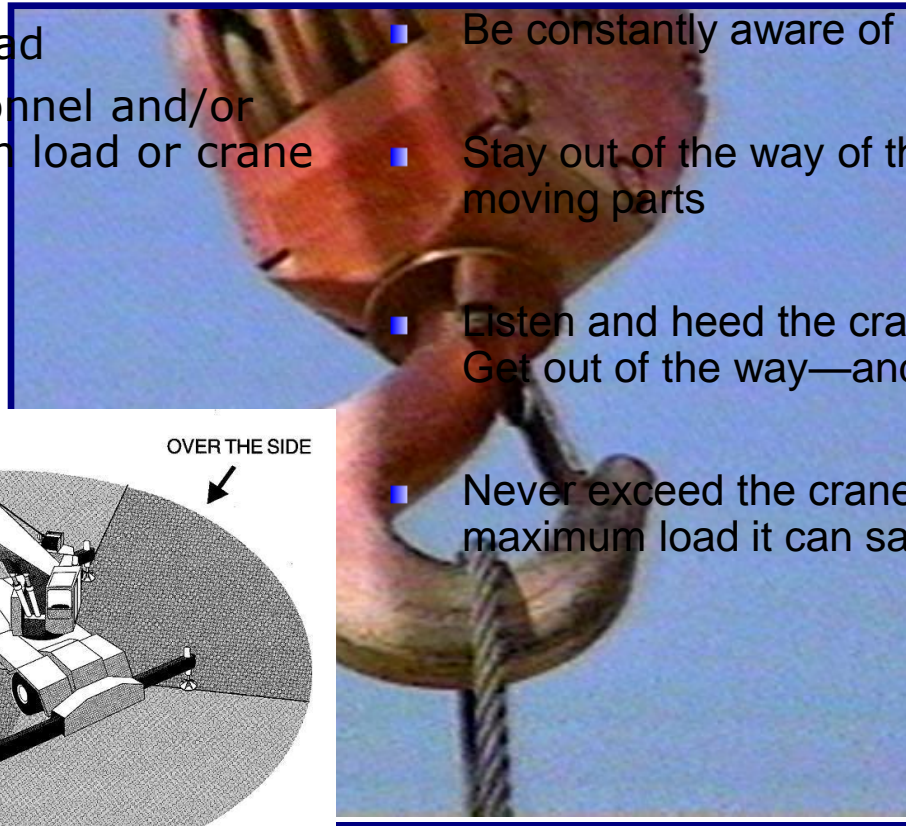
Lifting and Rigging

There are three main hazards when using cranes and slings:

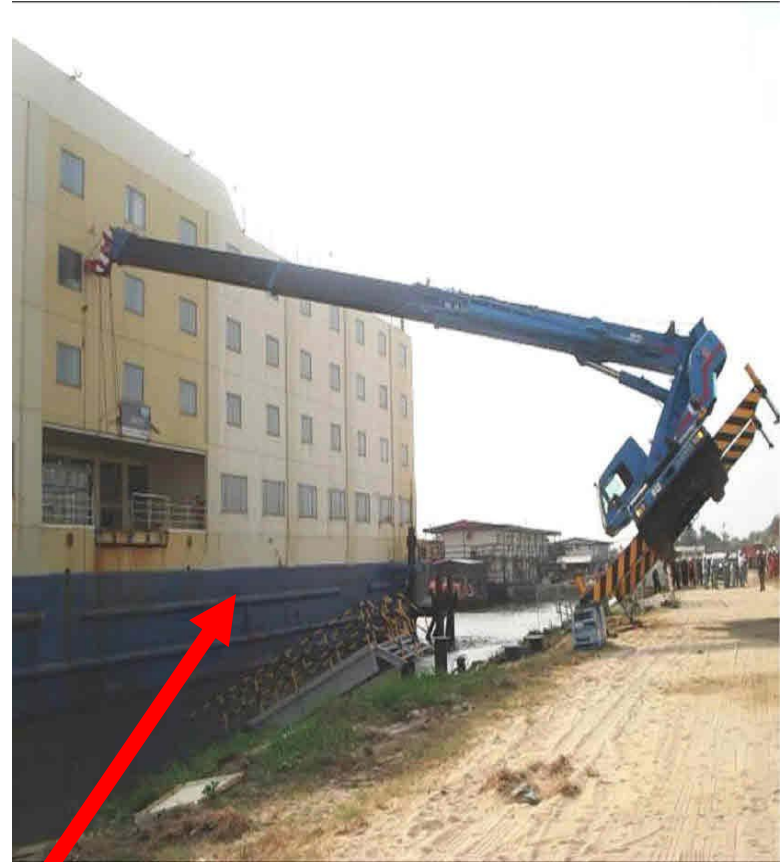
- Crane failure
- Dropping a load
- Striking personnel and/or equipment with load or crane

Identifying Hazards:

- Keep your eyes open
- Be constantly aware of the crane's movements
- Stay out of the way of the machine and its moving parts
- Listen and heed the crane's warning signal. Get out of the way—and fast
- Never exceed the crane's rated capacity, or the maximum load it can safely handle







Consequences

Incident & Injury Free (IIF)

- IIF is a culture that is the basis for the project safety programs
- IIF means that everyone can go home everyday without any injury
-
- IIF is good for you and your family
- More training and coaching sessions will take place during the project
 - **Why Safety is Very Important???**



Commitment Slide

သတိရပါ...
ဘေးန္တရယ်
ကင်းရင်းရေးသည်
အားလုံးအတွက်
ဖြစ်ပါတယ်။ ငါမရှိရင်
သူတို့
ဘာတွေလုပ်ကြမလဲ
ဆိုတာသတိရပါ။



လူတစ်ဦးစီ၏ ကတိသဘောထား

ငါသည် အန္တရာယ်ရှိသော အပြုအမူများကို မလုပ်ပါ။ ငါသည် ငါ၏အလုပ်ကို မတော်တဆ ထိခိုက်မှု ကင်းရင်းရမည်ဟုသော စိတ်အခြေခံဖြင့် ဆောက်ရွက်ပါမည်။ လုံခြုံဘေးကင်းမှု မရှိသော အပြုအမူများ၊ အခြေအနေများကို ရပ်တန့်ပစ်ပါမည်ဟု ကတိပေးပါသည်။ ငါသည် လုံခြုံဘေးကင်းမှုမရှိသောအခြေအနေပေါ် လစ်လျူမရှုပါ။ ပြဿနာတစ်ခု တွေ့လျှင် ငါ၏ပြဿနာဟု သဘောထားပြီး တစ်ဦးတစ်ယောက်ကိုမှ ထိခိုက်နာကျင်မှု မရှိအောင် ကာကွယ် ပေးပါမည်။

Commitment Slide

Remember...
It's all about them -
what would they do
without me?



Personal Commitment –

**I will not to engage in at-risk behaviors, and I will perform my work
with an incident free mindset.**

**I promise to stop unsafe acts and conditions. I will not ignore them.
If I see a problem, I will own it and take action to prevent someone
from being hurt**

SAFETY

Have you got the message?



Questions

질문있으십니까?

the end