



# PARAMI ENERGY GROUP OF COMPANIES



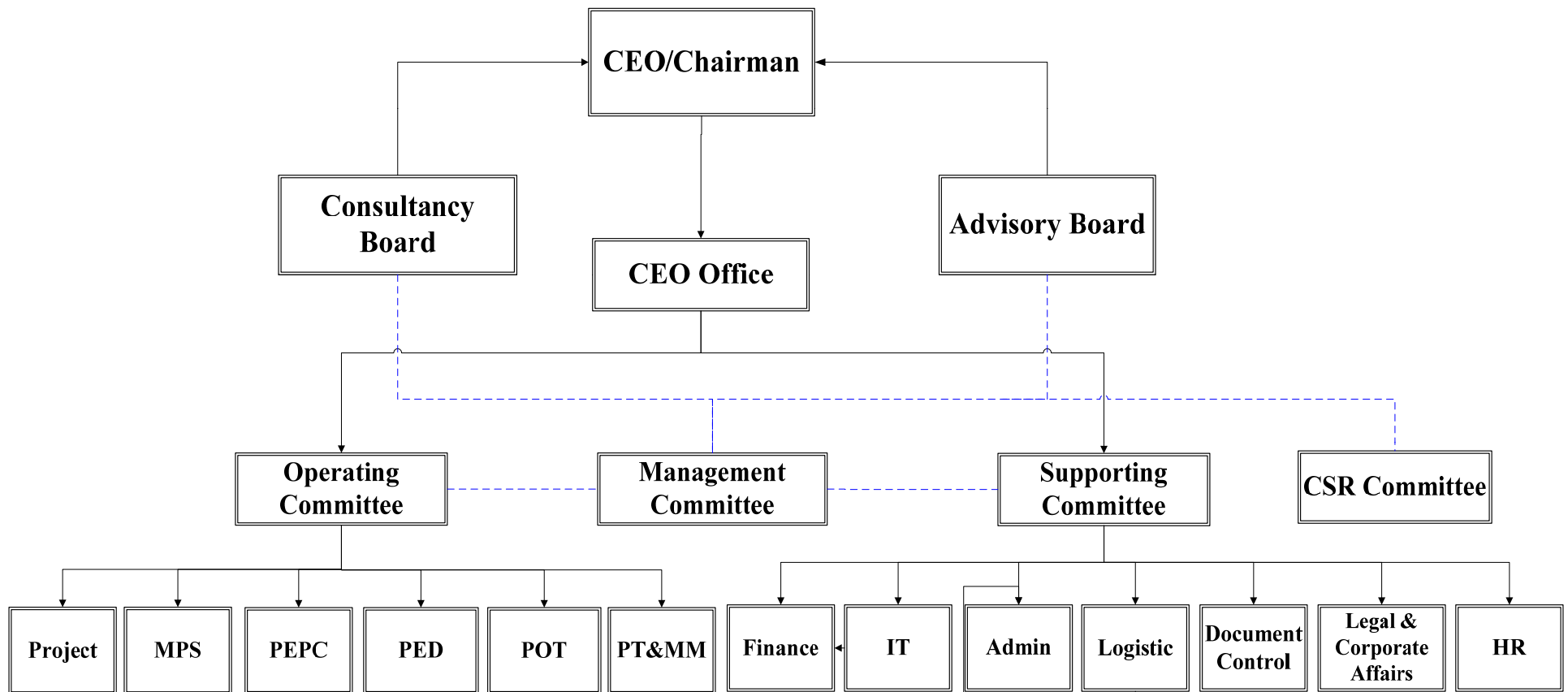
---

## About PARAMI ENERGY

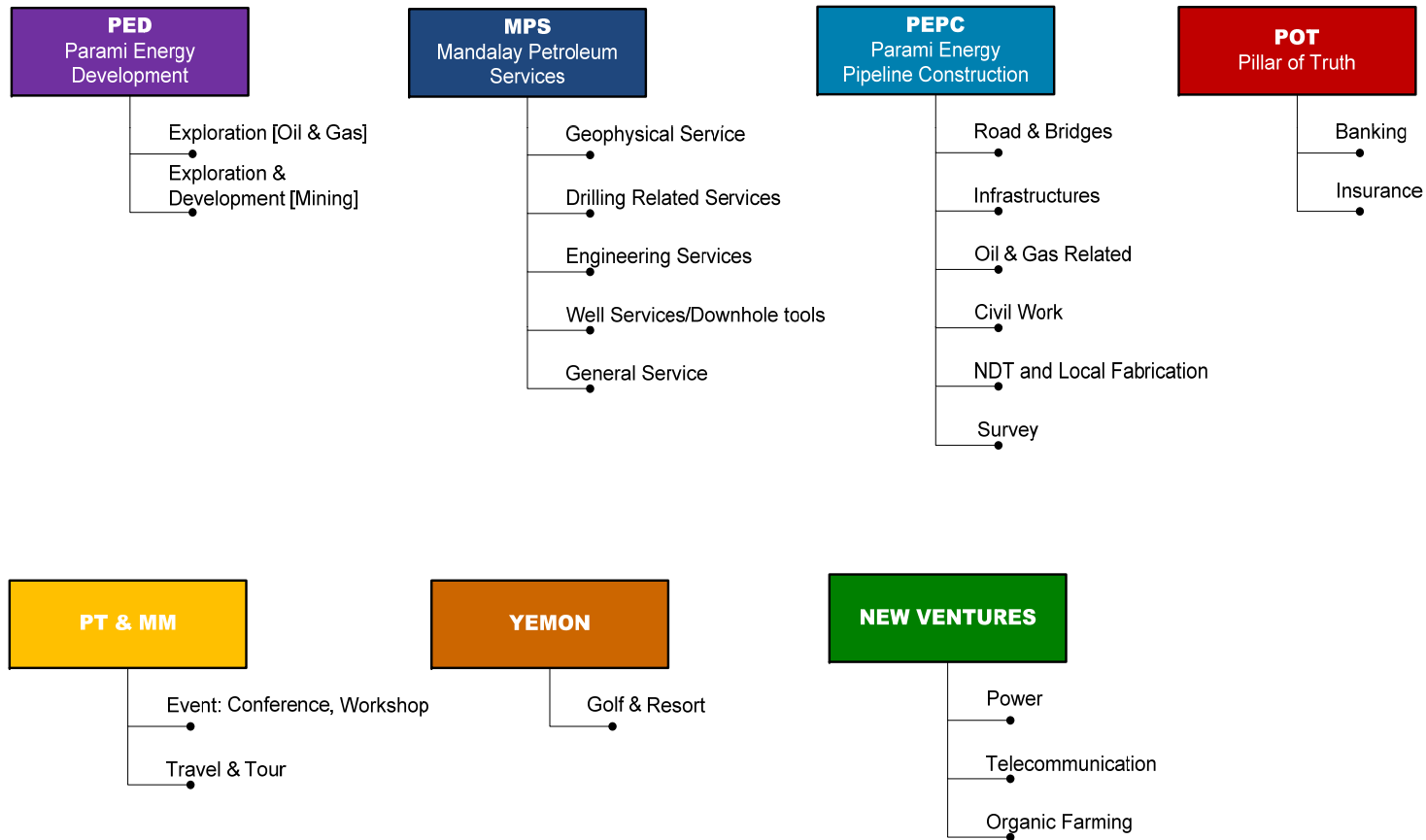
- Parami was started in 2004 with the aim of providing high quality services to our corporate and government clients in Myanmar.
- We differentiate ourselves from our competitions through our corporate values, innovative business model, and straight forward business approach.
- Parami have organically grown from engineering service provider to the Parami Energy Group of Companies (“Parami Energy”) with core businesses in Oil and Gas, Power, Construction, Banking and Insurance sectors.
- In the year 2010, Parami Energy generated income of more than USD 15 million. The income exceeded more than USD 20 million in 2011. We had only 12 people in 2009. It has since increased to over 200 people in 2012.
- We walk extra mile to be green and responsible corporate citizen of Myanmar. Parami Energy is committed to plant 500,000 trees and to support one third of monastery education in needy areas by 2015. In addition, we provide access to clean water and power to villages and hospitals in remote areas.



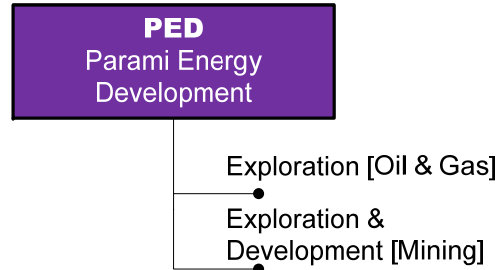
## Group Structure



# Strategic Business Units of the Group



# Exploration & Development



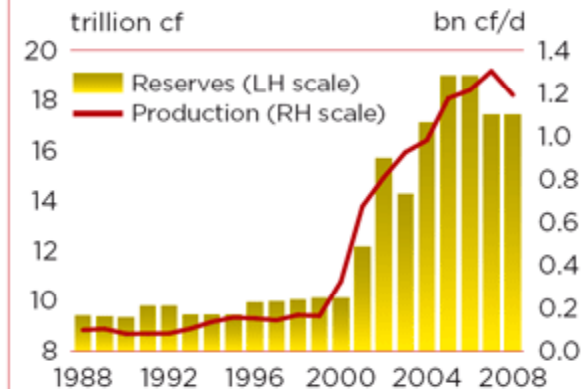
Parami Energy Development has a dedicated and experienced E&P Team of over 15 people, comprising of Geologists, Geophysicist, Drilling & Production Engineers and Logisticians to take care of exploration and production activities in Myanmar. The team has deep understanding of the oil & gas fields of Myanmar.

22.5% of Exploration Block PSC-I  
Probable TCF Play

100% Medium-size Mine  
Magnesium Di-oxide  
Probable Reserve 20,000 MT

100% Medium-size Mine, Bentonite  
Probable Reserve 100,000 MT

**Figure 1: Myanmar's gas reserves and production**



Source: Cedigaz



# Oil & Gas Services

## MPS

Mandalay Petroleum  
Services

Geophysical Service

Drilling Related Services

Engineering Services

Well Services/Downhole tools

General Service

- The outlook for Oil & Gas service industry amidst the easing of sanction and signing of more exploration blocks

- We estimate service industry revenue will exceed USD 1 billion for 2013-14

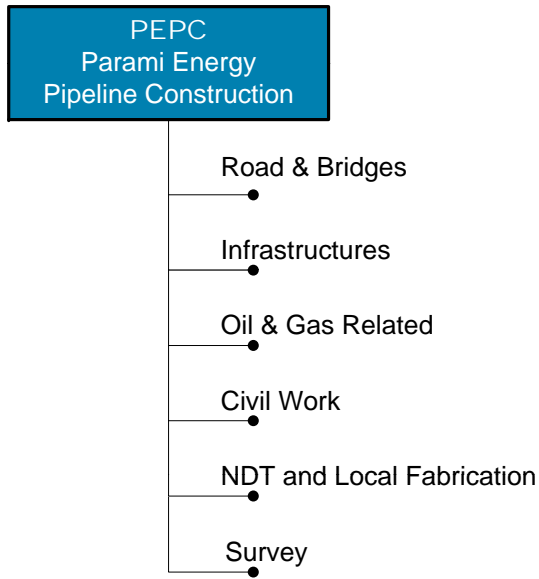
Major Distributorship: 8  
Joint Venture Agreement: 3  
Revenue: USD 15 Million

Focus on Joint Venture  
Focus on Technology Transfer  
Restructure for operating efficiency  
Recruit Expat for high level post

PARAMI ENERGY SERVICES CO. LTD ( PES ), later called Mandalay Petroleum Services, were founded in 2009 as part of the Group to assist our clients to complete their operations on time and to the highest industry standards.



# Infrastructure & Development



Joint Venture with PLL  
Initial Station Construction  
Revenue: USD 60 Million

Camp Construction  
Well Site Preparation  
Revenue: USD 3 Million

Construction of Major  
Infrastructure Projects

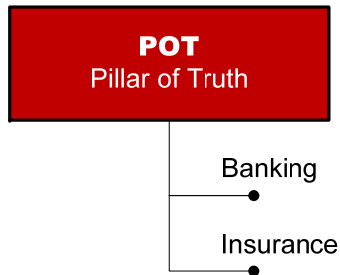
- Roads
- Airport
- Building

Parami Energy Pipeline Construction completed the projects which have high demand for quality, safety and timely completion.

We aim to eliminate or minimize any negative environmental impact through our engineering expertise and innovative solutions.



# Banking & Insurance



Parami Energy has the interest in local bank. MCB is the only local bank with shares traded on Myanmar Security and Exchange Commission ( MSEC ).

The bank is 46<sup>th</sup> highest tax payer in Myanmar.

We also were granted by the government the license to operate insurance business locally.

Acquired Insurance Business License

Partner with world class insurance company & capture critical markets

5% of Interest in Myanmar Citizens Bank (MCB)

Acquisition of more share in Local Banks





# Other Businesses



Event: Conference, Workshop

Travel & Tour



Golf & Resort

Hotel and Tour operator license  
Event & Conference Management

Operate 18-hole Golf Course  
with Hotel



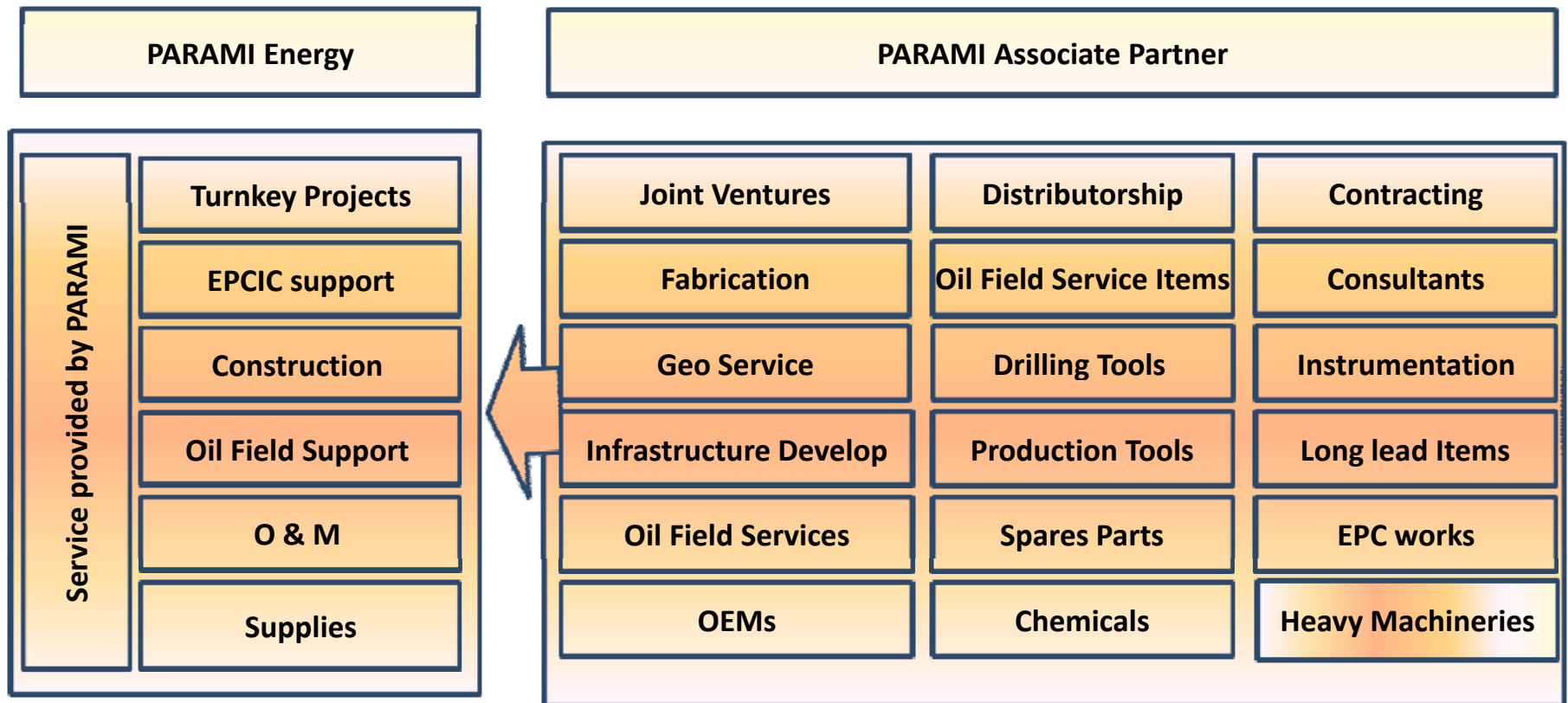
Power

Telecommunication

Organic Farming



# PARAMI's Service Provider Model



Through our local knowledge, local networks and partnership with reputable international partners, we can provide our clients the same standard of professional services in Myanmar as they are used to anywhere else in the world.



# Group HSE Matters

- PARAMI ENERGY GROUP OF COMPANIES applies the policy and practice, Health, Safety and Environmental procedures to prevent all accidents, incident and diseases which may occur as a result of work by all workers.
- We stress importance of the Occupational Health, Safety and Environmental Protection laws to avoid the unnecessary costs and damages to our business caused by workplace injury and illness.
- We strictly emphasize the safety-first in all our work places since it is critical to the success of your business, no matter what size it is. So that accident-free working environment could be achieved.



## Main Objectives

- Policy and procedure
- Accident Risk Data
- Risk Reduction Mechanism

## Occupational Health Policy and Procedure

- We care about our workers and put in place the occupational health and policy procedures with respect to health, safety and environment such as: pre-employment medical check-up, manage safe working environment, hygiene catering environment, accident emergency plan, first aid facility, smoking hygiene and consumption of alcohol and drug.

## Occupational Safety Procedure and Policy

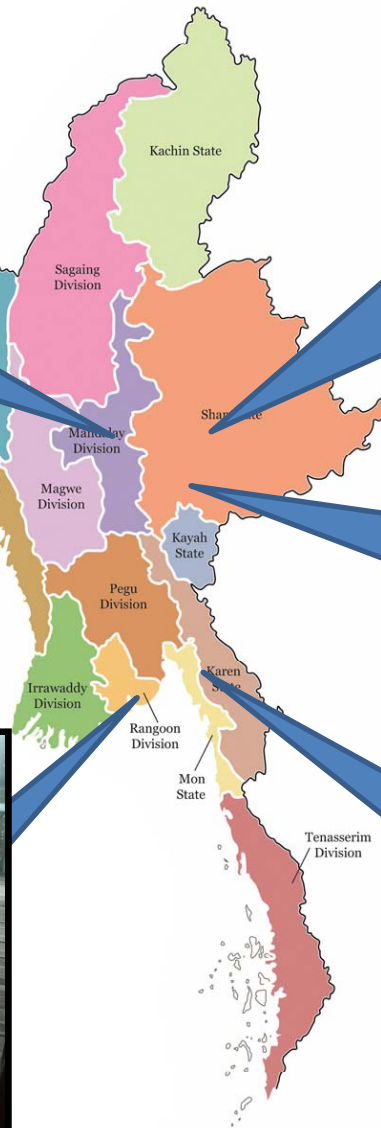
- We manage occupational safety as follows:
- Providing and maintaining workplace, plant and system of work.
- Providing and maintaining personnel protective equipment as require.
- Providing information, instruction, training and supervision to ensure safe system of work.
- Ensure that nominated personnel safety personnel are adequately trained and supported
- Consulting and cooperating with safety and health representatives, employees and others
- Continuously reviewing and improving its safety performance.

## Environmental Protection Procedure and Policy

- We are very much concerned not only the working environment but also our emphasis is stressed on environment protection in order not to have harmful impacts on the environment.
- After environmental examination if the situation warrants it will be follow by the environmental assessment. We take further action based on the findings to implement environmental management to mitigate the undesirable impacts on the environment.
- We emphasize that to comply with the procedures in order to maintain the good working environment that is healthy, safe, hygiene and free from environmental pollution.



# Corporate Responsibilities @ Soul to Social Development





# Corporate Responsibilities @ Soul to Nature

