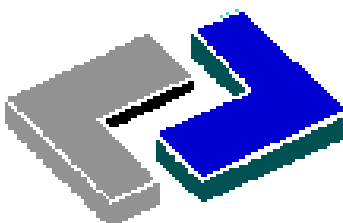


GLOBAL COMPACT - COP Loire Etude



LOIRE ETUDE

SA LOIRE ETUDE

Parc d'Activités de Stelytec
42400 SAINT-CHAMOND

Tél : +0033 4 77 29 30 29

Fax : +0033 4 77 29 30 28

Mail : loire-etude@loire-etude.com

*To believe in sustainable development as a way
to reconcile men and economics*

For a couple of years now, sustainable development has been one of the guidelines of our expansion. The creation of our industrial site in Saint-Chamond in 2000 was the starting point of this process. Taking into account the human and environmental factors when making a decision is an everyday concern.

As a proof of our constant commitment, our new plant in Romania is managed by the same social and environmental standards as our French production site. We decided to take part in the Global Compact because we have the strong belief that a sustainable development policy is the solution to the conflict between the people and the financial imperatives of the corporate world. We want our ideas to be acknowledged and shared. We will as well watch carefully the ideas of the other participants.

The Communication on Progress we propose is only a part of what we implement in this field. We are about to develop several more aspects of this process in the coming years.

Michel GARSON
PDG Loire Etude

ENTREPRISE: LOIRE ETUDE

TITRE: VOLUNTARY ENVIRONMENTAL POLICY: AN EXAMPLE OF PROCESSING AND REVALUATION OF THE INDUSTRIAL WASTE AT LOIRE ETUDE

GLOBAL COMPACT PRINCIPLES TAKEN INTO ACCOUNT: 7, 8

ACTIONS

In 2000, Loire Etude decided to change its location in order to expand its activity on a modern site. The site of Chasse-sur-Rhone was indeed growing old and its organization was artisanal, although the site had been certified ISO 9001 since 1998.

The industrial park of Stelytec in Saint-Chamond was chosen. Given that this industrial area is close to the motorway access, the site does not generate extra sound nuisance for the people. This moving in can be understood as the will to become a firm with an industrial organization while taking into account the environmental, social and society components.

Following the ISO 9001 certification, Loire Etude has kept on developing its global quality policy and decided to work voluntarily towards obtaining the ISO 14001 certification and this, without any constraint from our clients. We called this process "Sustainable Development Improvement Plan" which consists, among others, in recycling our waste. It has begun in 2001.

The site was thus designed not only for an efficient flux and ergonomics management aimed at the company's profitability but also for an efficient management of the environment. That's why we organized a strong sensitization of all the operators to inform them about waste recycling which consist in sorting it out between "banal" waste and "special" waste.

The sorting out and revaluation policy has been implemented since 200 and is particularly directed at Special Industrial Waste. Certified organizations keep tabs on this waste from the moment it is picked up to the moment it is destroyed. This policy was adopted progressively since the employees had to change their working habits.

A genuine training of the employees has to be done in order to assimilate waste processing not as a constraint but as an essential act for the QSE (Quality-Security-Environment) process of Loire Etude. Indeed, each type of waste has to be put away in a particular spot (tank, container and vat) depending on its nature. For instance, oil-and-paint stained cardboards won't be treated the same way as a clean cardboard.

RESULTS

Since 2000, four indicators are studied for the SDIP implemented by Loire Etude:

- Collecting and following of special waste
- Collecting and selling second hand steel
- Banal waste
- Sorting the office's consumption of paper

The analysis of figures is still too recent to actually learn something from it. For instance, the 10000L buried vat was emptied only once in six years. What's more, the waste volume depends on our activity level.

You will find below our internal organization concerning recycling. There are two main zones :

- One for banal waste with :
 - A 5 m3 tank for basket waste
 - another 5 m3 tank for oil-and-paint stained cardboards
 - A 15 m3 storage zone for woods (pallets)
 - the 10000L buried vat for all treated hydrocarbons (oil and paint) that will be destroyed in accredited centers (Investment up to 2500€)
- One inside for special waste with :
 - A 1 m3 for filters, resurfacing sludges, absorbing products, plastics and stained rags
 - A storage zone for empty cans of paint
 - A storage zone for worn-out electric cells
 - A storage zone for fluorescent lamps and bulbs
 - A storage zone for empty aerosols

In the offices, one basket is for worn-out electric cells only. They are recycled.

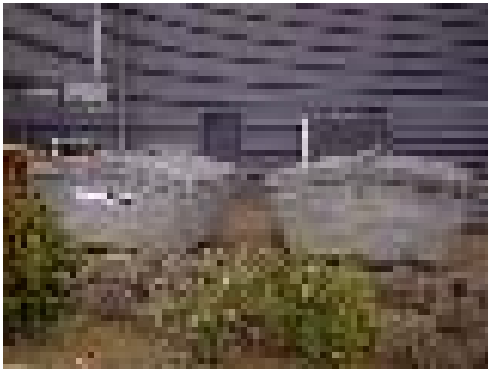
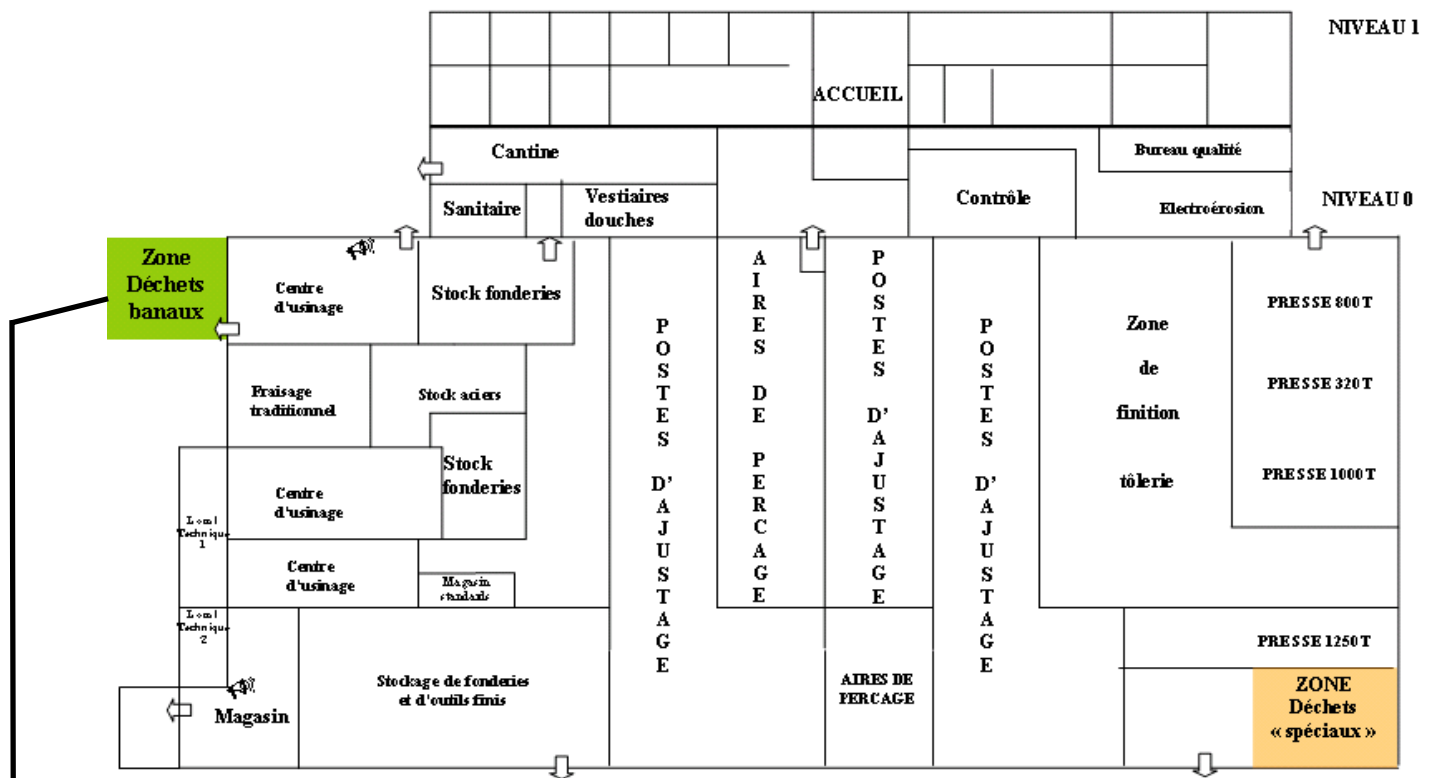
- 2 8m3 tanks for cuttings of iron chips and sheets sold to an accredited scrap metal dealer to be reprocessed.

All these special waste are treated at accredited organizations. The task of our QSE manager is to verify that our dangerous wastes are really treated or eliminated.

This policy will continue. For instance in 2006, Loire Etude bought two machines of a new generation, for which more maintenance is requested compared to the older ones. On the other side, ionized resins resulting from the machines can be reprocessed and recycled by an accredited organization.

NB : Instructions related to waste sorting are displayed in different corners on site

ON-VIEW OF THE WORKSHOP :



NATION : France

KEY WORDS : Séparation, Garbages, environnement, DIS

CONTACT: Frédéric Vincent fvincent@loire-etude.com

TYPE DE DECHETS

LIEU DE STOCKAGE AVANT EVACUATION

D.I.B (DECHETS INDUSTRIELS BANALS)

Papiers, ordures ménagères, plastiques et poudre de verre de la microbilleuse, meules usagées	Dans la benne à l'extérieur du bâtiment à coté du local technique : ZONE DIB (Mettre la poudre de verre dans un sac pour qu'elle ne s'envole pas avec le vent).
Palettes en bois	A côté de la benne à l'extérieur du bâtiment à coté du local technique : ZONE DIB.
Copeaux	Convoyeur harpon ou directement dans la benne à copeaux à l'extérieur à coté du local technique.
Cartons non souillés	Dans la benne à carton à l'extérieure (ZONE DIB).
Chutes de tôles	Benne à tôle à côté du stockage des fûts d'huile.

- Annexes :**
- 1- Fiche d'identification des déchets
 - 2- Fiche des prestataires d'enlèvement
 - 3- Registre des enlèvements
 - 4- Bordereau de suivi des déchets à remplir lors de l'enlèvement des déchets

REDACTEUR/FONCTION	VERIFICATEUR/FONCTION	APPROBATEUR/FONCTION
Nom : F.VINCENT RQE	Nom : F.VINCENT RQE	Nom : M. GARSON PDG
Date :	Date :	Date :
Visa :	Visa :	Visa :



TYPE DE DECHETS

LIEU DE STOCKAGE AVANT EVACUATION

D.I.S (DECHETS INDUSTRIELS SPECIAUX)

Notre récupérateur de D.I.S. ne peut les évacuer que s'il nous délivre un bordereau de suivi des déchets industriels (BSDD). **AUCUN DIS ne quitte le site sans BSDD.** Ce bordereau ne peut être signé que par un des responsables atelier, le cariste ou le RQSE ; le RQSE les conserve et s'assure du retour du BSDD avec la signature du destinataire pour le traitement final du déchet.

Boues de rectification Cartons souillés (huileux...) Filtres papier huileux Gants souillés Marqueurs, feutres, stylos usagés Produit absorbant usagé	Caisse palette pour solides imprégnés derrière les fûts d'huile neuve
Cartouches d'encre imprimante, photocopieuse, fax	Dans la boîte réservée à cet effet dans le local fournitures bureaux
Chiffons souillés	Dans les réceptacles à chiffons souillés dans l'atelier ou dans la benne DIS si très souillés
Diluant, dégraissant	Dans cuve enterrée
Huiles usagées	Dans cuve enterrée
Piles usagées	Sur rack à côté de la presse 1250T
Bombes aérosols	Dans le fût de récupération derrière les fûts d'huile neuve
Pots de peinture vides, fûts d'huile vides	Sur rack à côté de la presse 1250T
Tubes fluorescents (néons)	Dans la caisse spécifiée dans la zone DIS (dans emballage d'origine si possible)