



# AT MCI, WE ARE COMMITTED TO GROWING OUR BUSINESS RESPONSIBLY...

DISCOVER THE PRACTICE BEHIND OUR PURPOSE

The background of the entire page is a photograph of a large, complex lighting rig for an event. The rig is made of dark metal trusses and is filled with numerous stage lights, including large spotlights and smaller fixtures. The scene is illuminated with a strong blue light, creating a dramatic and technical atmosphere. In the top left corner, a person's head and shoulders are visible, and in the top right, a person with a red backpack is partially seen. The overall composition is a high-angle shot looking down at the rig.

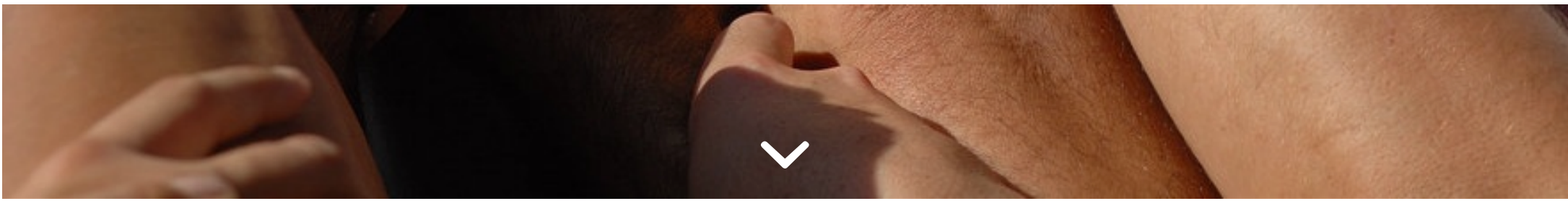
**WE ARE PASSIONATE ABOUT SUPPORTING  
OUR CLIENTS AND INDUSTRY TO EMBRACE  
MORE SUSTAINABLE PRACTICES...**

[READ ABOUT OUR APPROACH TO SUSTAINABLE EVENTS](#)



**AND BELIEVE THAT BY HARNESSING THE  
POWER OF COMMUNITY, WE ARE HELPING TO  
BUILD A BETTER WORLD.**


OUR TALENTS HAVE RAISED €1.7 MILLION FOR 409 COMMUNITY PROJECTS AROUND THE WORLD SINCE 2010



Welcome to the 2015 MCI Sustainability Report. We invite you to browse through our seventh report and discover our strategy and progress at becoming a more responsible, better business.



"Sustainability at MCI has become a core part of who we are, what we stand for, and how we



5,970 hours of staff  
volunteering, raising  
€128,108, supporting  
80 community projects

the **Power**  
of Community



create value for our  
clients.”

Message  
from our  
CEO



Our  
Priorities



Our  
Performance



less  
Conversation  mci  
more **Action**

## From the blog

Read the latest articles from our sustainability blog – “[Less Conversation More Action](#)”- where we share frontline views and experiences about sustainability in the Meetings & Events Industry.

Follow MCI on our journey towards sustainability

